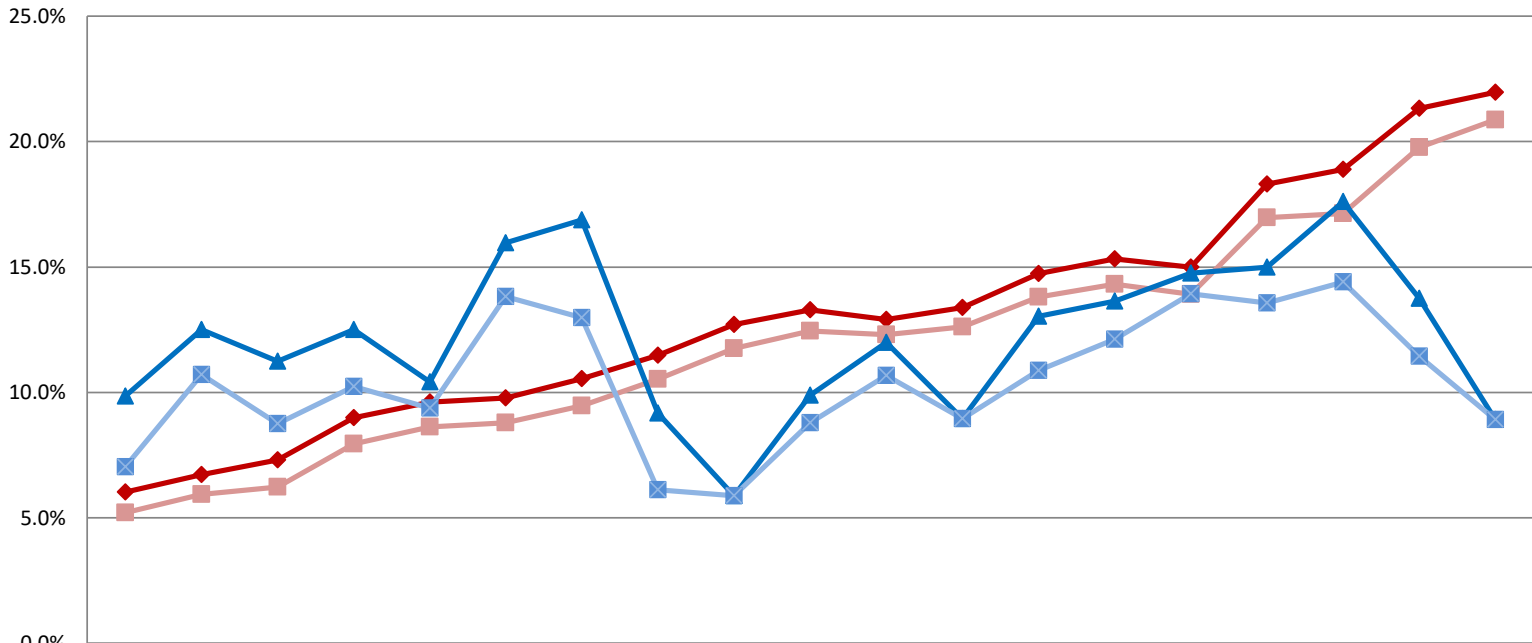


Kokomo

Proportion of Degree-Seeking Students of Color Among Known, Domestic Students



	2005	2006	2007	2008	2009	2010	2011	2012	2013	2014	2015	2016	2017	2018	2019	2020	2021	2022	2023
UG-Students of Color	6.0%	6.7%	7.3%	9.0%	9.6%	9.8%	10.6%	11.5%	12.7%	13.3%	12.9%	13.4%	14.7%	15.3%	15.0%	18.3%	18.9%	21.3%	22.0%
UG URSC	5.2%	5.9%	6.2%	7.9%	8.6%	8.8%	9.5%	10.5%	11.8%	12.5%	12.3%	12.6%	13.8%	14.3%	13.9%	17.0%	17.1%	19.8%	20.9%
Grad-Students of Color	9.9%	12.5%	11.3%	12.5%	10.4%	16.0%	16.9%	9.2%	5.9%	9.9%	12.0%	9.0%	13.0%	13.6%	14.8%	15.0%	17.6%	13.7%	8.9%
Grad-URSC	7.0%	10.7%	8.8%	10.2%	9.4%	13.8%	13.0%	6.1%	5.9%	8.8%	10.7%	9.0%	10.9%	12.1%	13.9%	13.6%	14.4%	11.5%	8.9%

Kokomo
Fall 2023

	UG, Degree Seeking			Graduate/Professional, Degree Seeking			Total, Degree Seeking		
		% of Known, Domestic	% of Total		% of Known, Domestic	% of Total		% of Known, Domestic	% of Total
<i>Numerators</i>	Count			Count			Count		
Hispanic/Latino	250	11.0%	10.8%	7	4.5%	4.1%	257	10.5%	10.4%
African American	115	5.0%	5.0%	4	2.5%	2.4%	119	4.9%	4.8%
Asian	25	1.1%	1.1%	0	0.0%	0.0%	25	1.0%	1.0%
American Indian	2	0.1%	0.1%	0	0.0%	0.0%	2	0.1%	0.1%
Pacific Islander	0	0.0%	0.0%	0	0.0%	0.0%	0	0.0%	0.0%
Two or More Races	109	4.8%	4.7%	3	1.9%	1.8%	112	4.6%	4.5%
Single Race Selections w/in Two or More Races									
African American	68			0			68		
Asian	17			1			18		
American Indian	29			1			30		
Pacific Islander	7			1			8		
White	105			3			108		
White	1,780	78.0%	77.1%	143	91.1%	84.6%	1,923	78.9%	77.6%
International ¹	19		0.8%	12		7.1%	31		1.3%
Unknown	8		0.3%	0		0.0%	8		0.3%
Students of Color ²	501	22.0%	21.7%	14	8.9%	8.3%	515	21.1%	20.8%
Underrepresented Students of Color ³	476	20.9%	20.6%	14	8.9%	8.3%	490	20.1%	19.8%
Denominators									
Known, Domestic Total ⁴	2,281			157			2,438		
Total ⁵	2,308			169			2,477		

¹ "International" - International student headcounts are based only on the student visa permit category of U.S. Nonresidents (i.e. excluding naturalized U.S. citizens and permanent residents). IA international student reporting is based on guidelines from the federal Integrated Postsecondary Education Data System (IPEDS). As of Fall 2022, students who qualify for the Deferred Action for Childhood Arrival (DACA) program will be reported under their self-identified ethnicity. This is in contrast to prior years, when a subset of individuals who qualified for DACA were instead reported in International headcounts. The results will be a small increase in reported headcounts of Hispanic/Latino, Black/African American, and Asian students, and a corresponding small decrease in the reported headcounts of International persons.

² "Students of Color" - Hispanic, African American, Asian, American Indian

³ "Underrepresented Students of Color" - All Students of Color less Asian

⁴ "Known, Domestic Total" - All Students of Color plus White. Excludes International and unknown.

⁵ "Total" - All degree seeking students including International and unknown

Kokomo
Fall 2022

	UG, Degree Seeking			Graduate/Professional, Degree Seeking			Total, Degree Seeking		
	<i>Numerators</i>	Count	% of Known, Domestic Total	Count	% of Known, Domestic Total	Count	% of Known, Domestic Total		
Hispanic/Latino	247	10.3%	10.2%	6	4.6%	4.2%	253	10.0%	9.9%
African American	110	4.6%	4.5%	5	3.8%	3.5%	115	4.6%	4.5%
Asian	37	1.5%	1.5%	3	2.3%	2.1%	40	1.6%	1.6%
American Indian	2	0.1%	0.1%	0	0.0%	0.0%	2	0.1%	0.1%
Pacific Islander	1	0.0%	0.0%	0	0.0%	0.0%	1	0.0%	0.0%
Two or More Races	112	4.7%	4.6%	4	3.1%	2.8%	116	4.6%	4.5%
Single Race Selections w/in Two or More Races									
African American	72			1			73		
Asian	23			0			23		
American Indian	22			4			26		
Pacific Islander	9			1			10		
White	106			3			109		
White	1,879	78.7%	77.7%	113	86.3%	79.0%	1,992	79.1%	77.8%
International ¹	19		0.8%	7		4.9%	26		1.0%
Unknown	12		0.5%	5		3.5%	17		0.7%
Students of Color ²	509	21.3%	21.0%	18	13.7%	12.6%	527	20.9%	20.6%
Underrepresented Students of Color ³	472	19.8%	19.5%	15	11.5%	10.5%	487	19.3%	19.0%
Denominators									
Known, Domestic Total ⁴	2,388			131			2,519		
Total ⁵	2,419			143			2,562		

¹ "International" - International student headcounts are based only on the student visa permit category of U.S. Nonresidents (i.e. excluding naturalized U.S. citizens and permanent residents). IA international student reporting is based on guidelines from the federal Integrated Postsecondary Education Data System (IPEDS). As of Fall 2022, students who qualify for the Deferred Action for Childhood Arrival (DACA) program will be reported under their self-identified ethnicity. This is in contrast to prior years, when a subset of individuals who qualified for DACA were instead reported in International headcounts. The results will be a small increase in reported headcounts of Hispanic/Latino, Black/African American, and Asian students, and a corresponding small decrease in the reported headcounts of International persons.

² "Students of Color" - Hispanic, African American, Asian, American Indian

³ "Underrepresented Students of Color" - All Students of Color less Asian

⁴ "Known, Domestic Total" - All Students of Color plus White. Excludes International and unknown.

⁵ "Total" - All degree seeking students including International and unknown

Kokomo
Fall 2021

	UG, Degree Seeking			Graduate/Professional, Degree Seeking			Total, Degree Seeking			
	<i>Numerators</i>	Count	% of Known, Domestic Total	% of Total	Count	% of Known, Domestic Total	% of Total	Count	% of Known, Domestic Total	% of Total
Hispanic/Latino		211	8.2%	8.1%	4	3.2%	2.9%	215	8.0%	7.8%
African American		120	4.7%	4.6%	8	6.4%	5.7%	128	4.7%	4.7%
Asian		45	1.7%	1.7%	4	3.2%	2.9%	49	1.8%	1.8%
American Indian		2	0.1%	0.1%	1	0.8%	0.7%	3	0.1%	0.1%
Pacific Islander		0	0.0%	0.0%	0	0.0%	0.0%	0	0.0%	0.0%
Two or More Races		108	4.2%	4.1%	5	4.0%	3.6%	113	4.2%	4.1%
Single Race Selections w/in Two or More Races										
African American		60			1			61		
Asian		25			2			27		
American Indian		30			3			33		
Pacific Islander		13			1			14		
White		101			4			105		
White		2,087	81.1%	79.9%	103	82.4%	73.6%	2,190	81.2%	79.6%
International ¹		23		0.9%	9		6.4%	32		1.2%
Unknown		16		0.6%	6		4.3%	22		0.8%
Students of Color ²		486	18.9%	18.6%	22	17.6%	15.7%	508	18.8%	18.5%
Underrepresented Students of Color ³		441	17.1%	16.9%	18	14.4%	12.9%	459	17.0%	16.7%
Denominators										
Known, Domestic Total ⁴		2,573			125			2,698		
Total ⁵		2,612			140			2,752		

¹ "International" - International student headcounts are based only on the student visa permit category of non-resident alien (i.e. excluding naturalized U.S. citizens and permanent residents). IA international student reporting is based on guidelines from the federal Integrated Postsecondary Education Data System (IPEDS).

² "Students of Color" - Hispanic, African American, Asian, American Indian

³ "Underrepresented Students of Color" - All Students of Color less Asian

⁴ "Known, Domestic Total" - All Students of Color plus White. Excludes International and unknown.

⁵ "Total" - All degree seeking students including International and unknown

Kokomo

Fall 2020

	UG, Degree Seeking			Graduate/Professional, Degree Seeking			Total, Degree Seeking		
		% of Known, Domestic	% of Total		% of Known, Domestic	% of Total		% of Known, Domestic	% of Total
<i>Numerators</i>	Count			Count			Count		
Hispanic/Latino	227	8.2%	8.0%	5	3.6%	2.9%	232	8.0%	7.7%
African American	129	4.6%	4.6%	9	6.4%	5.2%	138	4.7%	4.6%
Asian	37	1.3%	1.3%	2	1.4%	1.2%	39	1.3%	1.3%
American Indian	6	0.2%	0.2%	1	0.7%	0.6%	7	0.2%	0.2%
Pacific Islander	0	0.0%	0.0%	1	0.7%	0.6%	1	0.0%	0.0%
Two or More Races	109	3.9%	3.9%	3	2.1%	1.7%	112	3.8%	3.7%
Single Race Selections w/in Two or More Races									
African American	65			1			66		
Asian	26			0			26		
American Indian	26			3			29		
Pacific Islander	13			0			13		
White	102			2			104		
White	2,268	81.7%	80.1%	119	85.0%	69.2%	2,387	81.9%	79.5%
International ¹	27		1.0%	18		10.5%	45		1.5%
Unknown	27		1.0%	14		8.1%	41		1.4%
Students of Color ²	508	18.3%	18.0%	21	15.0%	12.2%	529	18.1%	17.6%
Underrepresented Students of Color ³	471	17.0%	16.6%	19	13.6%	11.0%	490	16.8%	16.3%
Denominators									
Known, Domestic Total ⁴	2,776			140			2,916		
Total ⁵	2,830			172			3,002		

¹ "International" - International student headcounts are based only on the student visa permit category of non-resident alien (i.e. excluding naturalized U.S. citizens and permanent residents). IA international student reporting is based on guidelines from the federal Integrated Postsecondary Education Data System (IPEDS).

² "Students of Color" - Hispanic, African American, Asian, American Indian

³ "Underrepresented Students of Color" - All Students of Color less Asian

⁴ "Known, Domestic Total" - All Students of Color plus White. Excludes International and unknown.

⁵ "Total" - All degree seeking students including International and unknown

Kokomo
Fall 2019

	UG, Degree Seeking			Graduate/Professional, Degree Seeking			Total, Degree Seeking		
		% of Known, Domestic	% of Total		% of Known, Domestic	% of Total		% of Known, Domestic	% of Total
<i>Numerators</i>	Count	Total	Total	Count	Total	Total	Count	Total	Total
Hispanic/Latino	178	6.7%	6.5%	7	5.7%	4.4%	185	6.6%	6.4%
African American	101	3.8%	3.7%	6	4.9%	3.8%	107	3.8%	3.7%
Asian	29	1.1%	1.1%	1	0.8%	0.6%	30	1.1%	1.0%
American Indian	6	0.2%	0.2%	0	0.0%	0.0%	6	0.2%	0.2%
Pacific Islander	0	0.0%	0.0%	1	0.8%	0.6%	1	0.0%	0.0%
Two or More Races	87	3.3%	3.2%	3	2.5%	1.9%	90	3.2%	3.1%
Single Race Selections w/in Two or More Races									
African American	50			1			51		
Asian	15			0			15		
American Indian	20			2			22		
Pacific Islander	13			0			13		
White	84			3			87		
White	2,274	85.0%	82.6%	104	85.2%	65.8%	2,378	85.0%	81.7%
International ¹	37		1.3%	24		15.2%	61		2.1%
Unknown	40		1.5%	12		7.6%	52		1.8%
Students of Color ²	401	15.0%	14.6%	18	14.8%	11.4%	419	15.0%	14.4%
Underrepresented Students of Color ³	372	13.9%	13.5%	17	13.9%	10.8%	389	13.9%	13.4%
Denominators									
Known, Domestic Total ⁴	2,675			122			2,797		
Total ⁵	2,752			158			2,910		

¹ "International" - International student headcounts are based only on the student visa permit category of non-resident alien (i.e. excluding naturalized U.S. citizens and permanent residents). IA international student reporting is based on guidelines from the federal Integrated Postsecondary Education Data System (IPEDS).

² "Students of Color" - Hispanic, African American, Asian, American Indian

³ "Underrepresented Students of Color" - All Students of Color less Asian

⁴ "Known, Domestic Total" - All Students of Color plus White. Excludes International and unknown.

⁵ "Total" - All degree seeking students including International and unknown

Kokomo

Fall 2018

	UG, Degree Seeking			Graduate/Professional, Degree Seeking			Total, Degree Seeking			
	<i>Numerators</i>	Count	% of Known, Domestic Total	% of Total	Count	% of Known, Domestic Total	% of Total	Count	% of Known, Domestic Total	% of Total
Hispanic/Latino		149	5.6%	5.5%	6	4.5%	3.6%	155	5.6%	5.3%
African American		122	4.6%	4.5%	7	5.3%	4.2%	129	4.6%	4.5%
Asian		27	1.0%	1.0%	2	1.5%	1.2%	29	1.0%	1.0%
American Indian		11	0.4%	0.4%	0	0.0%	0.0%	11	0.4%	0.4%
Pacific Islander		1	0.0%	0.0%	0	0.0%	0.0%	1	0.0%	0.0%
Two or More Races		96	3.6%	3.5%	3	2.3%	1.8%	99	3.6%	3.4%
Single Race Selections w/in Two or More Races										
African American		49			1			50		
Asian		15			0			15		
American Indian		34			2			36		
Pacific Islander		8			0			8		
White		93			3			96		
White		2,243	84.7%	82.2%	114	86.4%	67.9%	2,357	84.8%	81.3%
International ¹		29		1.1%	24		14.3%	53		1.8%
Unknown		52		1.9%	12		7.1%	64		2.2%
Students of Color ²		406	15.3%	14.9%	18	13.6%	10.7%	424	15.2%	14.6%
Underrepresented Students of Color ³		379	14.3%	13.9%	16	12.1%	9.5%	395	14.2%	13.6%
Denominators										
Known, Domestic Total ⁴		2,649			132			2,781		
Total ⁵		2,730			168			2,898		

¹ "International" - International student headcounts are based only on the student visa permit category of non-resident alien (i.e. excluding naturalized U.S. citizens and permanent residents). IA international student reporting is based on guidelines from the federal Integrated Postsecondary Education Data System (IPEDS).

² "Students of Color" - Hispanic, African American, Asian, American Indian

³ "Underrepresented Students of Color" - All Students of Color less Asian

⁴ "Known, Domestic Total" - All Students of Color plus White. Excludes International and unknown.

⁵ "Total" - All degree seeking students including International and unknown

Kokomo

Fall 2017

	UG, Degree Seeking			Graduate/Professional, Degree Seeking			Total, Degree Seeking			
	<i>Numerators</i>	Count	% of Known, Domestic Total	% of Total	Count	% of Known, Domestic Total	% of Total	Count	% of Known, Domestic Total	% of Total
Hispanic/Latino	152	5.7%	5.5%	0	0.0%	0.0%	152	5.5%	5.3%	
African American	120	4.5%	4.4%	8	8.7%	6.3%	128	4.6%	4.5%	
Asian	25	0.9%	0.9%	2	2.2%	1.6%	27	1.0%	0.9%	
American Indian	9	0.3%	0.3%	0	0.0%	0.0%	9	0.3%	0.3%	
Pacific Islander	3	0.1%	0.1%	0	0.0%	0.0%	3	0.1%	0.1%	
Two or More Races	86	3.2%	3.1%	2	2.2%	1.6%	88	3.2%	3.1%	
Single Race Selections w/in Two or More Races										
African American	45			0			45			
Asian	18			0			18			
American Indian	22			2			24			
Pacific Islander	6			0			6			
White	86			2			88			
White	2,284	85.3%	83.2%	80	87.0%	63.0%	2,364	85.3%	82.3%	
International ¹	28		1.0%	32		25.2%	60		2.1%	
Unknown	39		1.4%	3		2.4%	42		1.5%	
Students of Color ²	395	14.7%	14.4%	12	13.0%	9.4%	407	14.7%	14.2%	
Underrepresented Students of Color ³	370	13.8%	13.5%	10	10.9%	7.9%	380	13.7%	13.2%	
Denominators										
Known, Domestic Total ⁴	2,679			92			2,771			
Total ⁵	2,746			127			2,873			

¹ "International" - International student headcounts are based only on the student visa permit category of non-resident alien (i.e. excluding naturalized U.S. citizens and permanent residents). IA international student reporting is based on guidelines from the federal Integrated Postsecondary Education Data System (IPEDS).

² "Students of Color" - Hispanic, African American, Asian, American Indian

³ "Underrepresented Students of Color" - All Students of Color less Asian

⁴ "Known, Domestic Total" - All Students of Color plus White. Excludes International and unknown.

⁵ "Total" - All degree seeking students including International and unknown

Kokomo

Fall 2016

	UG, Degree Seeking			Graduate/Professional, Degree Seeking			Total, Degree Seeking			
	<i>Numerators</i>	Count	% of Known, Domestic Total	% of Total	Count	% of Known, Domestic Total	% of Total	Count	% of Known, Domestic Total	% of Total
Hispanic/Latino		134	5.0%	4.8%	1	1.5%	1.0%	135	4.9%	4.7%
African American		114	4.2%	4.1%	5	7.5%	4.9%	119	4.3%	4.1%
Asian		21	0.8%	0.8%	0	0.0%	0.0%	21	0.8%	0.7%
American Indian		8	0.3%	0.3%	0	0.0%	0.0%	8	0.3%	0.3%
Pacific Islander		3	0.1%	0.1%	0	0.0%	0.0%	3	0.1%	0.1%
Two or More Races		81	3.0%	2.9%	0	0.0%	0.0%	81	2.9%	2.8%
Single Race Selections w/in Two or More Races										
African American		34			0			34		
Asian		22			0			22		
American Indian		24			0			24		
Pacific Islander		5			0			5		
White		81			0			81		
White		2,336	86.6%	84.3%	61	91.0%	59.8%	2,397	86.7%	83.4%
International ¹		17		0.6%	30		29.4%	47		1.6%
Unknown		57		2.1%	5		4.9%	62		2.2%
Students of Color ²		361	13.4%	13.0%	6	9.0%	5.9%	367	13.3%	12.8%
Underrepresented Students of Color ³		340	12.6%	12.3%	6	9.0%	5.9%	346	12.5%	12.0%
Denominators										
Known, Domestic Total ⁴		2,697			67			2,764		
Total ⁵		2,771			102			2,873		

¹ "International" - International student headcounts are based only on the student visa permit category of non-resident alien (i.e. excluding naturalized U.S. citizens and permanent residents). IA international student reporting is based on guidelines from the federal Integrated Postsecondary Education Data System (IPEDS).

² "Students of Color" - Hispanic, African American, Asian, American Indian

³ "Underrepresented Students of Color" - All Students of Color less Asian

⁴ "Known, Domestic Total" - All Students of Color plus White. Excludes International and unknown.

⁵ "Total" - All degree seeking students including International and unknown

Kokomo

Fall 2015

<i>Numerators</i>	UG, Degree Seeking			Graduate/Professional, Degree Seeking			Total, Degree Seeking		
	Count	% of Known, Domestic	% of Total	Count	% of Known, Domestic	% of Total	Count	% of Known, Domestic	% of Total
Hispanic/Latino	129	4.8%	4.6%	1	1.3%	0.9%	130	4.7%	4.5%
African American	116	4.3%	4.2%	5	6.7%	4.3%	121	4.4%	4.2%
Asian	16	0.6%	0.6%	1	1.3%	0.9%	17	0.6%	0.6%
American Indian	15	0.6%	0.5%	0	0.0%	0.0%	15	0.5%	0.5%
Pacific Islander	4	0.1%	0.1%	0	0.0%	0.0%	4	0.1%	0.1%
Two or More Races	67	2.5%	2.4%	2	2.7%	1.7%	69	2.5%	2.4%
Single Race Selections w/in Two or More Races									
African American	23			0			23		
Asian	20			0			20		
American Indian	23			2			25		
Pacific Islander	5			0			5		
White	67			2			69		
White	2,343	87.1%	84.3%	66	88.0%	56.9%	2,409	87.1%	83.2%
International ¹	16		0.6%	34		29.3%	50		1.7%
Unknown	72		2.6%	7		6.0%	79		2.7%
Students of Color ²	347	12.9%	12.5%	9	12.0%	7.8%	356	12.9%	12.3%
Underrepresented Students of Color ³	331	12.3%	11.9%	8	10.7%	6.9%	339	12.3%	11.7%
Denominators									
Known, Domestic Total ⁴	2,690			75			2,765		
Total ⁵	2,778			116			2,894		

¹ "International" - International student headcounts are based only on the student visa permit category of non-resident alien (i.e. excluding naturalized U.S. citizens and permanent residents). IA international student reporting is based on guidelines from the federal Integrated Postsecondary Education Data System (IPEDS).

² "Students of Color" - Hispanic, African American, Asian, American Indian

³ "Underrepresented Students of Color" - All Students of Color less Asian

⁴ "Known, Domestic Total" - All Students of Color plus White. Excludes International and unknown.

⁵ "Total" - All degree seeking students including International and unknown

Kokomo

Fall 2014

<i>Numerators</i>	UG, Degree Seeking			Graduate/Professional, Degree Seeking			Total, Degree Seeking		
	Count	% of Known, Domestic	% of Total	Count	% of Known, Domestic	% of Total	Count	% of Known, Domestic	% of Total
Hispanic/Latino	137	5.2%	5.0%	1	1.1%	0.7%	138	5.1%	4.8%
African American	118	4.5%	4.3%	6	6.6%	4.2%	124	4.5%	4.3%
Asian	22	0.8%	0.8%	1	1.1%	0.7%	23	0.8%	0.8%
American Indian	13	0.5%	0.5%	0	0.0%	0.0%	13	0.5%	0.5%
Pacific Islander	5	0.2%	0.2%	0	0.0%	0.0%	5	0.2%	0.2%
Two or More Races	56	2.1%	2.1%	1	1.1%	0.7%	57	2.1%	2.0%
Single Race Selections w/in Two or More Races									
African American	12			0			12		
Asian	20			0			20		
American Indian	23			1			24		
Pacific Islander	4			0			4		
White	55			1			56		
White	2,290	86.7%	84.1%	82	90.1%	57.3%	2,372	86.8%	82.7%
International ¹	10		0.4%	42		29.4%	52		1.8%
Unknown	73		2.7%	10		7.0%	83		2.9%
Students of Color ²	351	13.3%	12.9%	9	9.9%	6.3%	360	13.2%	12.6%
Underrepresented Students of Color ³	329	12.5%	12.1%	8	8.8%	5.6%	337	12.3%	11.8%
Denominators									
Known, Domestic Total ⁴	2,641			91			2,732		
Total ⁵	2,724			143			2,867		

¹ "International" - International student headcounts are based only on the student visa permit category of non-resident alien (i.e. excluding naturalized U.S. citizens and permanent residents). IA international student reporting is based on guidelines from the federal Integrated Postsecondary Education Data System (IPEDS).

² "Students of Color" - Hispanic, African American, Asian, American Indian

³ "Underrepresented Students of Color" - All Students of Color less Asian

⁴ "Known, Domestic Total" - All Students of Color plus White. Excludes International and unknown.

⁵ "Total" - All degree seeking students including International and unknown

Kokomo
Fall 2013

	UG, Degree Seeking			Graduate/Professional, Degree Seeking			Total, Degree Seeking			
	<i>Numerators</i>	Count	% of Known, Domestic Total	% of Total	Count	% of Known, Domestic Total	% of Total	Count	% of Known, Domestic Total	% of Total
Hispanic/Latino	114	4.4%	4.2%	1	0.8%	0.6%	115	4.2%	4.0%	
African American	109	4.2%	4.0%	4	3.4%	2.4%	113	4.1%	3.9%	
Asian	25	1.0%	0.9%	0	0.0%	0.0%	25	0.9%	0.9%	
American Indian	9	0.3%	0.3%	1	0.8%	0.6%	10	0.4%	0.3%	
Pacific Islander	4	0.2%	0.1%	0	0.0%	0.0%	4	0.1%	0.1%	
Two or More Races	70	2.7%	2.6%	1	0.8%	0.6%	71	2.6%	2.5%	
Single Race Selections w/in Two or More Races										
African American	27			0			27			
Asian	24			0			24			
American Indian	24			1			25			
Pacific Islander	4			0			4			
White	69			1			70			
White	2,273	87.3%	83.9%	112	94.1%	68.3%	2,385	87.6%	83.0%	
International ¹	8		0.3%	35		21.3%	43		1.5%	
Unknown	96		3.5%	10		6.1%	106		3.7%	
Students of Color ²	331	12.7%	12.2%	7	5.9%	4.3%	338	12.4%	11.8%	
Underrepresented Students of Color ³	306	11.8%	11.3%	7	5.9%	4.3%	313	11.5%	10.9%	
Denominators										
Known, Domestic Total ⁴	2,604			119			2,723			
Total ⁵	2,708			164			2,872			

¹ "International" - International student headcounts are based only on the student visa permit category of non-resident alien (i.e. excluding naturalized U.S. citizens and permanent residents). IA international student reporting is based on guidelines from the federal Integrated Postsecondary Education Data System (IPEDS).

² "Students of Color" - Hispanic, African American, Asian, American Indian

³ "Underrepresented Students of Color" - All Students of Color less Asian

⁴ "Known, Domestic Total" - All Students of Color plus White. Excludes International and unknown.

⁵ "Total" - All degree seeking students including International and unknown

Kokomo

Fall 2012

	UG, Degree Seeking			Graduate/Professional, Degree Seeking			Total, Degree Seeking			
	<i>Numerators</i>	Count	% of Known, Domestic Total	% of Total	Count	% of Known, Domestic Total	% of Total	Count	% of Known, Domestic Total	% of Total
Hispanic/Latino	91	3.6%	3.4%	0	0.0%	0.0%	91	3.5%	3.3%	
African American	115	4.5%	4.3%	4	4.1%	3.6%	119	4.5%	4.3%	
Asian	24	0.9%	0.9%	3	3.1%	2.7%	27	1.0%	1.0%	
American Indian	8	0.3%	0.3%	0	0.0%	0.0%	8	0.3%	0.3%	
Pacific Islander	2	0.1%	0.1%	0	0.0%	0.0%	2	0.1%	0.1%	
Two or More Races	51	2.0%	1.9%	2	2.0%	1.8%	53	2.0%	1.9%	
Single Race Selections w/in Two or More Races										
African American	12			1			13			
Asian	17			0			17			
American Indian	24			2			26			
Pacific Islander	4			0			4			
White	50			1			51			
White	2,244	88.5%	84.6%	89	90.8%	80.9%	2,333	88.6%	84.4%	
International ¹	2		0.1%	5		4.5%	7		0.3%	
Unknown	117		4.4%	7		6.4%	124		4.5%	
Students of Color ²	291	11.5%	11.0%	9	9.2%	8.2%	300	11.4%	10.9%	
Underrepresented Students of Color ³	267	10.5%	10.1%	6	6.1%	5.5%	273	10.4%	9.9%	
Denominators										
Known, Domestic Total ⁴	2,535			98			2,633			
Total ⁵	2,654			110			2,764			

¹ "International" - International student headcounts are based only on the student visa permit category of non-resident alien (i.e. excluding naturalized U.S. citizens and permanent residents). IA international student reporting is based on guidelines from the federal Integrated Postsecondary Education Data System (IPEDS).

² "Students of Color" - Hispanic, African American, Asian, American Indian

³ "Underrepresented Students of Color" - All Students of Color less Asian

⁴ "Known, Domestic Total" - All Students of Color plus White. Excludes International and unknown.

⁵ "Total" - All degree seeking students including International and unknown

Kokomo

Fall 2011

	UG, Degree Seeking			Graduate/Professional, Degree Seeking			Total, Degree Seeking			
	<i>Numerators</i>	Count	% of Known, Domestic Total	% of Total	Count	% of Known, Domestic Total	% of Total	Count	% of Known, Domestic Total	% of Total
Hispanic/Latino	72	3.0%	2.9%	0	0.0%	0.0%	72	2.9%	2.8%	
African American	108	4.5%	4.3%	8	10.4%	9.8%	116	4.7%	4.5%	
Asian	26	1.1%	1.0%	3	3.9%	3.7%	29	1.2%	1.1%	
American Indian	7	0.3%	0.3%	1	1.3%	1.2%	8	0.3%	0.3%	
Pacific Islander	2	0.1%	0.1%	0	0.0%	0.0%	2	0.1%	0.1%	
Two or More Races	39	1.6%	1.6%	1	1.3%	1.2%	40	1.6%	1.5%	
Single Race Selections w/in Two or More Races										
African American	13			1			14			
Asian	6			0			6			
American Indian	23			1			24			
Pacific Islander	4			0			4			
White	39			0			39			
White	2,153	89.4%	86.1%	64	83.1%	78.0%	2,217	89.3%	85.8%	
International ¹	0		0.0%	4		4.9%	4		0.2%	
Unknown	94		3.8%	1		1.2%	95		3.7%	
Students of Color ²	254	10.6%	10.2%	13	16.9%	15.9%	267	10.7%	10.3%	
Underrepresented Students of Color ³	228	9.5%	9.1%	10	13.0%	12.2%	238	9.6%	9.2%	
Denominators										
Known, Domestic Total ⁴	2,407			77			2,484			
Total ⁵	2,501			82			2,583			

¹ "International" - International student headcounts are based only on the student visa permit category of non-resident alien (i.e. excluding naturalized U.S. citizens and permanent residents). IA international student reporting is based on guidelines from the federal Integrated Postsecondary Education Data System (IPEDS).

² "Students of Color" - Hispanic, African American, Asian, American Indian

³ "Underrepresented Students of Color" - All Students of Color less Asian

⁴ "Known, Domestic Total" - All Students of Color plus White. Excludes International and unknown.

⁵ "Total" - All degree seeking students including International and unknown

Kokomo

Fall 2010

	UG, Degree Seeking			Graduate/Professional, Degree Seeking			Total, Degree Seeking			
	<i>Numerators</i>	Count	% of Known, Domestic Total	% of Total	Count	% of Known, Domestic Total	% of Total	Count	% of Known, Domestic Total	% of Total
Hispanic/Latino		64	2.7%	2.6%	4	4.3%	4.1%	68	2.8%	2.7%
African American		117	5.0%	4.8%	7	7.4%	7.2%	124	5.1%	4.9%
Asian		23	1.0%	0.9%	2	2.1%	2.1%	25	1.0%	1.0%
American Indian		7	0.3%	0.3%	1	1.1%	1.0%	8	0.3%	0.3%
Pacific Islander		1	0.0%	0.0%	0	0.0%	0.0%	1	0.0%	0.0%
Two or More Races		17	0.7%	0.7%	1	1.1%	1.0%	18	0.7%	0.7%
Single Race Selections w/in Two or More Races										
African American		5			0			5		
Asian		6			1			7		
American Indian		8			0			8		
Pacific Islander		1			0			1		
White		17			1			18		
White		2,113	90.2%	86.8%	79	84.0%	81.4%	2,192	90.0%	86.6%
International ¹		1		0.0%	1		1.0%	2		0.1%
Unknown		90		3.7%	2		2.1%	92		3.6%
Students of Color ²		229	9.8%	9.4%	15	16.0%	15.5%	244	10.0%	9.6%
Underrepresented Students of Color ³		206	8.8%	8.5%	13	13.8%	13.4%	219	9.0%	8.7%
Denominators										
Known, Domestic Total ⁴		2,342			94			2,436		
Total ⁵		2,433			97			2,530		

¹ "International" - International student headcounts are based only on the student visa permit category of non-resident alien (i.e. excluding naturalized U.S. citizens and permanent residents). IA international student reporting is based on guidelines from the federal Integrated Postsecondary Education Data System (IPEDS).

² "Students of Color" - Hispanic, African American, Asian, American Indian

³ "Underrepresented Students of Color" - All Students of Color less Asian

⁴ "Known, Domestic Total" - All Students of Color plus White. Excludes International and unknown.

⁵ "Total" - All degree seeking students including International and unknown

Kokomo

Fall 2009

	UG, Degree Seeking			Graduate/Professional, Degree Seeking			Total, Degree Seeking		
		% of Known, Domestic	% of Total		% of Known, Domestic	% of Total		% of Known, Domestic	% of Total
<i>Numerators</i>	Count	Total	Total	Count	Total	Total	Count	Total	Total
Hispanic/Latino	55	2.5%	2.3%	3	3.1%	2.9%	58	2.5%	2.4%
African American	126	5.7%	5.4%	5	5.2%	4.9%	131	5.6%	5.3%
Asian	22	1.0%	0.9%	1	1.0%	1.0%	23	1.0%	0.9%
American Indian	11	0.5%	0.5%	1	1.0%	1.0%	12	0.5%	0.5%
White	2,011	90.4%	85.6%	86	89.6%	84.3%	2,097	90.3%	85.5%
International ¹	4		0.2%	2		2.0%	6		0.2%
Unknown	121		5.1%	4		3.9%	125		5.1%
Students of Color ²	214	9.6%	9.1%	10	10.4%	9.8%	224	9.7%	9.1%
Underrepresented Students of Color ³	192	8.6%	8.2%	9	9.4%	8.8%	201	8.7%	8.2%
<i>Denominators</i>									
Known, Domestic Total ⁴	2,225			96			2,321		
Total ⁵	2,350			102			2,452		

¹ "International" - International student headcounts are based only on the student visa permit category of non-resident alien (i.e. excluding naturalized U.S. citizens and permanent residents). IA international student reporting is based on guidelines from the federal Integrated Postsecondary Education Data System (IPEDS).

² "Students of Color" - Hispanic, African American, Asian, American Indian

³ "Underrepresented Students of Color" - All Students of Color less Asian

⁴ "Known, Domestic Total" - All Students of Color plus White. Excludes International and unknown.

⁵ "Total" - All degree seeking students including International and unknown

Kokomo

Fall 2008

	UG, Degree Seeking			Graduate/Professional, Degree Seeking			Total, Degree Seeking		
		% of Known, Domestic	% of Total		% of Known, Domestic	% of Total		% of Known, Domestic	% of Total
<i>Numerators</i>	Count	Total	Total	Count	Total	Total	Count	Total	Total
Hispanic/Latino	45	2.1%	2.0%	0	0.0%	0.0%	45	2.0%	2.0%
African American	109	5.2%	4.9%	8	9.1%	8.8%	117	5.3%	5.1%
Asian	22	1.0%	1.0%	2	2.3%	2.2%	24	1.1%	1.0%
American Indian	14	0.7%	0.6%	1	1.1%	1.1%	15	0.7%	0.7%
White	1,925	91.0%	87.3%	77	87.5%	84.6%	2,002	90.9%	87.2%
International ¹	10		0.5%	1		1.1%	11		0.5%
Unknown	79		3.6%	2		2.2%	81		3.5%
Students of Color ²	190	9.0%	8.6%	11	12.5%	12.1%	201	9.1%	8.8%
Underrepresented Students of Color ³	168	7.9%	7.6%	9	10.2%	9.9%	177	8.0%	7.7%
<i>Denominators</i>									
Known, Domestic Total ⁴	2,115			88			2,203		
Total ⁵	2,204			91			2,295		

¹ "International" - International student headcounts are based only on the student visa permit category of non-resident alien (i.e. excluding naturalized U.S. citizens and permanent residents). IA international student reporting is based on guidelines from the federal Integrated Postsecondary Education Data System (IPEDS).

² "Students of Color" - Hispanic, African American, Asian, American Indian

³ "Underrepresented Students of Color" - All Students of Color less Asian

⁴ "Known, Domestic Total" - All Students of Color plus White. Excludes International and unknown.

⁵ "Total" - All degree seeking students including International and unknown

Kokomo

Fall 2007

<i>Numerators</i>	UG, Degree Seeking			Graduate/Professional, Degree Seeking			Total, Degree Seeking		
	Count	% of Known, Domestic	% of Total	Count	% of Known, Domestic	% of Total	Count	% of Known, Domestic	% of Total
Hispanic/Latino	38	1.6%	1.6%	2	2.5%	2.3%	40	1.7%	1.6%
African American	87	3.8%	3.6%	5	6.3%	5.8%	92	3.8%	3.7%
Asian	25	1.1%	1.0%	2	2.5%	2.3%	27	1.1%	1.1%
American Indian	19	0.8%	0.8%	0	0.0%	0.0%	19	0.8%	0.8%
White	2,144	92.7%	89.8%	71	88.8%	82.6%	2,215	92.6%	89.6%
International ¹	8		0.3%	5		5.8%	13		0.5%
Unknown	66		2.8%	1		1.2%	67		2.7%
Students of Color ²	169	7.3%	7.1%	9	11.3%	10.5%	178	7.4%	7.2%
Underrepresented Students of Color ³	144	6.2%	6.0%	7	8.8%	8.1%	151	6.3%	6.1%
<i>Denominators</i>									
Known, Domestic Total ⁴	2,313			80			2,393		
Total ⁵	2,387			86			2,473		

¹ "International" - International student headcounts are based only on the student visa permit category of non-resident alien (i.e. excluding naturalized U.S. citizens and permanent residents). IA international student reporting is based on guidelines from the federal Integrated Postsecondary Education Data System (IPEDS).

² "Students of Color" - Hispanic, African American, Asian, American Indian

³ "Underrepresented Students of Color" - All Students of Color less Asian

⁴ "Known, Domestic Total" - All Students of Color plus White. Excludes International and unknown.

⁵ "Total" - All degree seeking students including International and unknown

Kokomo

Fall 2006

	UG, Degree Seeking			Graduate/Professional, Degree Seeking			Total, Degree Seeking		
		% of Known, Domestic	% of Total		% of Known, Domestic	% of Total		% of Known, Domestic	% of Total
<i>Numerators</i>	Count	Total	Total	Count	Total	Total	Count	Total	Total
Hispanic/Latino	33	1.4%	1.4%	2	3.6%	3.2%	35	1.5%	1.4%
African American	88	3.8%	3.7%	4	7.1%	6.5%	92	3.9%	3.8%
Asian	18	0.8%	0.8%	1	1.8%	1.6%	19	0.8%	0.8%
American Indian	15	0.7%	0.6%	0	0.0%	0.0%	15	0.6%	0.6%
White	2,137	93.3%	90.2%	49	87.5%	79.0%	2,186	93.1%	90.0%
International ¹	10		0.4%	4		6.5%	14		0.6%
Unknown	67		2.8%	2		3.2%	69		2.8%
Students of Color ²	154	6.7%	6.5%	7	12.5%	11.3%	161	6.9%	6.6%
Underrepresented Students of Color ³	136	5.9%	5.7%	6	10.7%	9.7%	142	6.1%	5.8%
<i>Denominators</i>									
Known, Domestic Total ⁴	2,291			56			2,347		
Total ⁵	2,368			62			2,430		

¹ "International" - International student headcounts are based only on the student visa permit category of non-resident alien (i.e. excluding naturalized U.S. citizens and permanent residents). IA international student reporting is based on guidelines from the federal Integrated Postsecondary Education Data System (IPEDS).

² "Students of Color" - Hispanic, African American, Asian, American Indian

³ "Underrepresented Students of Color" - All Students of Color less Asian

⁴ "Known, Domestic Total" - All Students of Color plus White. Excludes International and unknown.

⁵ "Total" - All degree seeking students including International and unknown

Kokomo

Fall 2005

	UG, Degree Seeking			Graduate/Professional, Degree Seeking			Total, Degree Seeking		
		% of Known, Domestic	% of Total		% of Known, Domestic	% of Total		% of Known, Domestic	% of Total
<i>Numerators</i>	Count	Total	Total	Count	Total	Total	Count	Total	Total
Hispanic/Latino	33	1.4%	1.3%	2	2.8%	2.6%	35	1.4%	1.3%
African American	81	3.3%	3.2%	3	4.2%	3.9%	84	3.3%	3.2%
Asian	20	0.8%	0.8%	2	2.8%	2.6%	22	0.9%	0.8%
American Indian	13	0.5%	0.5%	0	0.0%	0.0%	13	0.5%	0.5%
White	2,292	94.0%	90.8%	64	90.1%	83.1%	2,356	93.9%	90.5%
International ¹	7		0.3%	2		2.6%	9		0.3%
Unknown	79		3.1%	4		5.2%	83		3.2%
Students of Color ²	147	6.0%	5.8%	7	9.9%	9.1%	154	6.1%	5.9%
Underrepresented Students of Color ³	127	5.2%	5.0%	5	7.0%	6.5%	132	5.3%	5.1%
<i>Denominators</i>									
Known, Domestic Total ⁴	2,439			71			2,510		
Total ⁵	2,525			77			2,602		

¹ "International" - International student headcounts are based only on the student visa permit category of non-resident alien (i.e. excluding naturalized U.S. citizens and permanent residents). IA international student reporting is based on guidelines from the federal Integrated Postsecondary Education Data System (IPEDS).

² "Students of Color" - Hispanic, African American, Asian, American Indian

³ "Underrepresented Students of Color" - All Students of Color less Asian

⁴ "Known, Domestic Total" - All Students of Color plus White. Excludes International and unknown.

⁵ "Total" - All degree seeking students including International and unknown