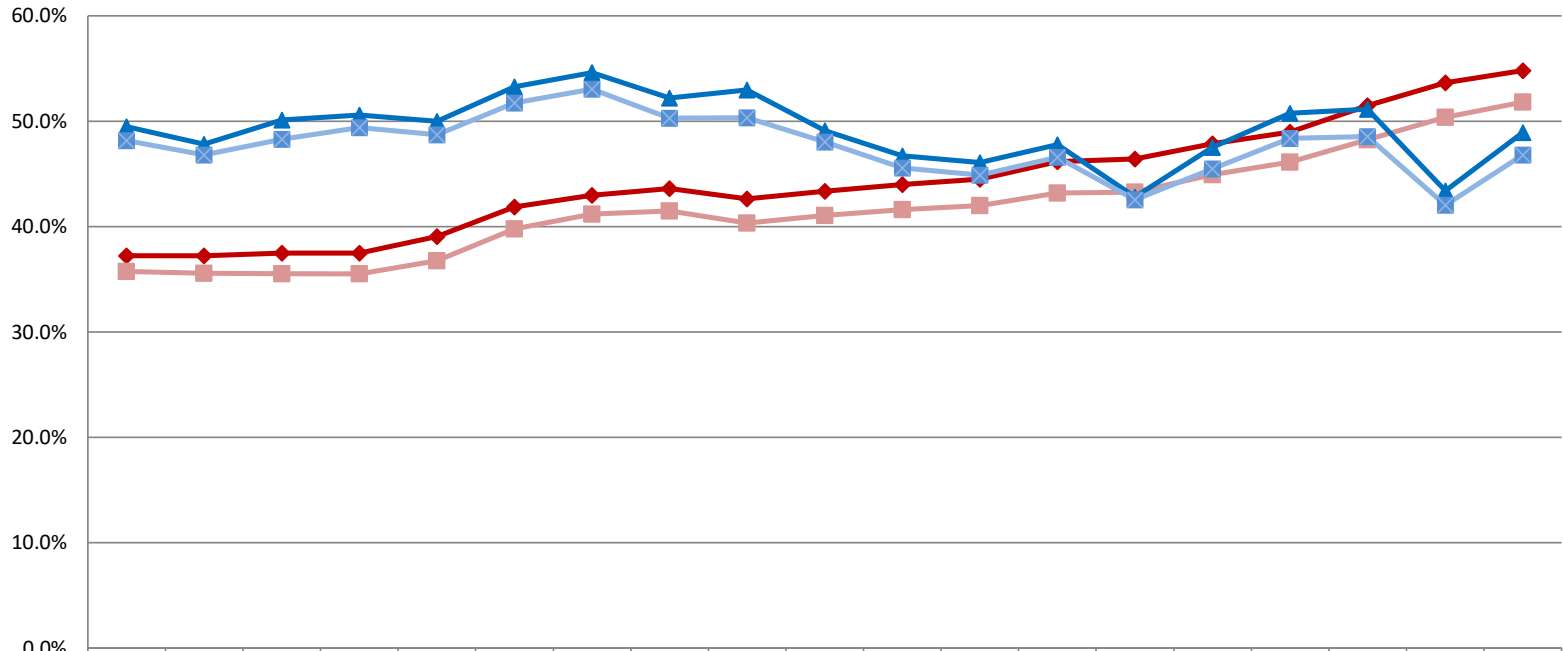


**Northwest**

**Proportion of Degree-Seeking Students of Color Among Known, Domestic Students**



	2005	2006	2007	2008	2009	2010	2011	2012	2013	2014	2015	2016	2017	2018	2019	2020	2021	2022	2023
UG-Students of Color	37.2%	37.2%	37.5%	37.5%	39.1%	41.9%	43.0%	43.6%	42.6%	43.3%	44.0%	44.5%	46.2%	46.4%	47.9%	49.0%	51.5%	53.7%	54.8%
UG URSC	35.8%	35.6%	35.5%	35.5%	36.7%	39.8%	41.2%	41.5%	40.3%	41.1%	41.6%	42.0%	43.2%	43.3%	44.9%	46.1%	48.2%	50.4%	51.8%
Grad-Students of Color	49.5%	47.8%	50.1%	50.6%	50.0%	53.3%	54.6%	52.2%	53.0%	49.1%	46.7%	46.1%	47.8%	42.8%	47.5%	50.7%	51.2%	43.4%	48.9%
Grad-URSC	48.1%	46.8%	48.3%	49.4%	48.7%	51.7%	53.0%	50.3%	50.3%	48.0%	45.6%	44.9%	46.6%	42.5%	45.5%	48.4%	48.6%	42.0%	46.8%

**Northwest**
**Fall 2023**

	UG, Degree Seeking			Graduate/Professional, Degree Seeking			Total, Degree Seeking			
	<i>Numerators</i>	Count	% of Known, Domestic Total	% of Total	Count	% of Known, Domestic Total	% of Total	Count	% of Known, Domestic Total	% of Total
Hispanic/Latino		779	30.3%	30.2%	44	18.7%	18.2%	823	29.4%	29.1%
African American		437	17.0%	16.9%	61	26.0%	25.2%	498	17.8%	17.6%
Asian		77	3.0%	3.0%	5	2.1%	2.1%	82	2.9%	2.9%
American Indian		2	0.1%	0.1%	0	0.0%	0.0%	2	0.1%	0.1%
Pacific Islander		0	0.0%	0.0%	0	0.0%	0.0%	0	0.0%	0.0%
Two or More Races		113	4.4%	4.4%	5	2.1%	2.1%	118	4.2%	4.2%
<b>Single Race Selections w/in Two or More Races</b>										
African American		67			2			69		
Asian		38			2			40		
American Indian		22			2			24		
Pacific Islander		14			0			14		
White		99			4			103		
White		1,161	45.2%	45.0%	120	51.1%	49.6%	1,281	45.7%	45.4%
International <sup>1</sup>		4		0.2%	7		2.9%	11		0.4%
Unknown		9		0.3%	0		0.0%	9		0.3%
Students of Color <sup>2</sup>		1,408	54.8%	54.5%	115	48.9%	47.5%	1,523	54.3%	53.9%
Underrepresented Students of Color <sup>3</sup>		1,331	51.8%	51.5%	110	46.8%	45.5%	1,441	51.4%	51.0%
<b>Denominators</b>										
Known, Domestic Total <sup>4</sup>		2,569			235			2,804		
Total <sup>5</sup>		2,582			242			2,824		

<sup>1</sup> "International" - International student headcounts are based only on the student visa permit category of U.S. Nonresidents (i.e. excluding naturalized U.S. citizens and permanent residents). IA international student reporting is based on guidelines from the federal Integrated Postsecondary Education Data System (IPEDS). As of Fall 2022, students who qualify for the Deferred Action for Childhood Arrival (DACA) program will be reported under their self-identified ethnicity. This is in contrast to prior years, when a subset of individuals who qualified for DACA were instead reported in International headcounts. The results will be a small increase in reported headcounts of Hispanic/Latino, Black/African American, and Asian students, and a corresponding small decrease in the reported headcounts of International persons.

<sup>2</sup> "Students of Color" - Hispanic, African American, Asian, American Indian

<sup>3</sup> "Underrepresented Students of Color" - All Students of Color less Asian

<sup>4</sup> "Known, Domestic Total" - All Students of Color plus White. Excludes International and unknown.

<sup>5</sup> "Total" - All degree seeking students including International and unknown

**Northwest**
**Fall 2022**

	UG, Degree Seeking			Graduate/Professional, Degree Seeking			Total, Degree Seeking			
	<i>Numerators</i>	Count	% of Known, Domestic Total	% of Total	Count	% of Known, Domestic Total	% of Total	Count	% of Known, Domestic Total	% of Total
Hispanic/Latino	793	29.5%	29.3%	59	20.0%	19.5%	852	28.6%	28.3%	
African American	456	17.0%	16.8%	59	20.0%	19.5%	515	17.3%	17.1%	
Asian	88	3.3%	3.2%	4	1.4%	1.3%	92	3.1%	3.1%	
American Indian	1	0.0%	0.0%	0	0.0%	0.0%	1	0.0%	0.0%	
Pacific Islander	1	0.0%	0.0%	0	0.0%	0.0%	1	0.0%	0.0%	
Two or More Races	104	3.9%	3.8%	6	2.0%	2.0%	110	3.7%	3.6%	
<b>Single Race Selections w/in Two or More Races</b>										
African American	61			2			63			
Asian	32			3			35			
American Indian	26			2			28			
Pacific Islander	11			1			12			
White	86			4			90			
White	1,246	46.3%	46.0%	167	56.6%	55.1%	1,413	47.4%	46.9%	
International <sup>1</sup>	9		0.3%	7		2.3%	16		0.5%	
Unknown	13		0.5%	1		0.3%	14		0.5%	
Students of Color <sup>2</sup>	1,443	53.7%	53.2%	128	43.4%	42.2%	1,571	52.6%	52.1%	
Underrepresented Students of Color <sup>3</sup>	1,355	50.4%	50.0%	124	42.0%	40.9%	1,479	49.6%	49.1%	
<b>Denominators</b>										
Known, Domestic Total <sup>4</sup>	2,689			295			2,984			
Total <sup>5</sup>	2,711			303			3,014			

<sup>1</sup> "International" - International student headcounts are based only on the student visa permit category of U.S. Nonresidents (i.e. excluding naturalized U.S. citizens and permanent residents). IA international student reporting is based on guidelines from the federal Integrated Postsecondary Education Data System (IPEDS). As of Fall 2022, students who qualify for the Deferred Action for Childhood Arrival (DACA) program will be reported under their self-identified ethnicity. This is in contrast to prior years, when a subset of individuals who qualified for DACA were instead reported in International headcounts. The results will be a small increase in reported headcounts of Hispanic/Latino, Black/African American, and Asian students, and a corresponding small decrease in the reported headcounts of International persons.

<sup>2</sup> "Students of Color" - Hispanic, African American, Asian, American Indian

<sup>3</sup> "Underrepresented Students of Color" - All Students of Color less Asian

<sup>4</sup> "Known, Domestic Total" - All Students of Color plus White. Excludes International and unknown.

<sup>5</sup> "Total" - All degree seeking students including International and unknown

**Northwest**
**Fall 2021**

	UG, Degree Seeking			Graduate/Professional, Degree Seeking			Total, Degree Seeking			
	<i>Numerators</i>	Count	% of Known, Domestic Total	% of Total	Count	% of Known, Domestic Total	% of Total	Count	% of Known, Domestic Total	% of Total
Hispanic/Latino		819	28.1%	27.8%	63	18.2%	17.7%	882	27.1%	26.8%
African American		462	15.9%	15.7%	99	28.6%	27.8%	561	17.2%	17.0%
Asian		94	3.2%	3.2%	9	2.6%	2.5%	103	3.2%	3.1%
American Indian		2	0.1%	0.1%	0	0.0%	0.0%	2	0.1%	0.1%
Pacific Islander		1	0.0%	0.0%	0	0.0%	0.0%	1	0.0%	0.0%
Two or More Races		120	4.1%	4.1%	6	1.7%	1.7%	126	3.9%	3.8%
<b>Single Race Selections w/in Two or More Races</b>										
African American		73			1			74		
Asian		37			3			40		
American Indian		30			1			31		
Pacific Islander		13			2			15		
White		101			5			106		
White		1,413	48.5%	48.0%	169	48.8%	47.5%	1,582	48.6%	48.0%
International <sup>1</sup>		12		0.4%	5		1.4%	17		0.5%
Unknown		18		0.6%	5		1.4%	23		0.7%
Students of Color <sup>2</sup>		1,498	51.5%	50.9%	177	51.2%	49.7%	1,675	51.4%	50.8%
Underrepresented Students of Color <sup>3</sup>		1,404	48.2%	47.7%	168	48.6%	47.2%	1,572	48.3%	47.7%
<b>Denominators</b>										
Known, Domestic Total <sup>4</sup>		2,911			346			3,257		
Total <sup>5</sup>		2,941			356			3,297		

<sup>1</sup> "International" - International student headcounts are based only on the student visa permit category of non-resident alien (i.e. excluding naturalized U.S. citizens and permanent residents). IA international student reporting is based on guidelines from the federal Integrated Postsecondary Education Data System (IPEDS).

<sup>2</sup> "Students of Color" - Hispanic, African American, Asian, American Indian

<sup>3</sup> "Underrepresented Students of Color" - All Students of Color less Asian

<sup>4</sup> "Known, Domestic Total" - All Students of Color plus White. Excludes International and unknown.

<sup>5</sup> "Total" - All degree seeking students including International and unknown

**Northwest**
**Fall 2020**

	UG, Degree Seeking			Graduate/Professional, Degree Seeking			Total, Degree Seeking			
	<i>Numerators</i>	Count	% of Known, Domestic Total	% of Total	Count	% of Known, Domestic Total	% of Total	Count	% of Known, Domestic Total	% of Total
Hispanic/Latino	871	26.8%	26.5%	63	18.6%	18.3%	934	26.0%	25.7%	
African American	504	15.5%	15.3%	97	28.6%	28.2%	601	16.7%	16.5%	
Asian	94	2.9%	2.9%	8	2.4%	2.3%	102	2.8%	2.8%	
American Indian	3	0.1%	0.1%	0	0.0%	0.0%	3	0.1%	0.1%	
Pacific Islander	2	0.1%	0.1%	0	0.0%	0.0%	2	0.1%	0.1%	
Two or More Races	121	3.7%	3.7%	4	1.2%	1.2%	125	3.5%	3.4%	
<b>Single Race Selections w/in Two or More Races</b>										
African American	75			2			77			
Asian	33			1			34			
American Indian	28			2			30			
Pacific Islander	13			1			14			
White	108			2			110			
White	1,661	51.0%	50.4%	167	49.3%	48.5%	1,828	50.8%	50.3%	
International <sup>1</sup>	18		0.5%	2		0.6%	20		0.5%	
Unknown	19		0.6%	3		0.9%	22		0.6%	
Students of Color <sup>2</sup>	1,595	49.0%	48.4%	172	50.7%	50.0%	1,767	49.2%	48.6%	
Underrepresented Students of Color <sup>3</sup>	1,501	46.1%	45.6%	164	48.4%	47.7%	1,665	46.3%	45.8%	
<b>Denominators</b>										
Known, Domestic Total <sup>4</sup>	3,256			339			3,595			
Total <sup>5</sup>	3,293			344			3,637			

<sup>1</sup> "International" - International student headcounts are based only on the student visa permit category of non-resident alien (i.e. excluding naturalized U.S. citizens and permanent residents). IA international student reporting is based on guidelines from the federal Integrated Postsecondary Education Data System (IPEDS).

<sup>2</sup> "Students of Color" - Hispanic, African American, Asian, American Indian

<sup>3</sup> "Underrepresented Students of Color" - All Students of Color less Asian

<sup>4</sup> "Known, Domestic Total" - All Students of Color plus White. Excludes International and unknown.

<sup>5</sup> "Total" - All degree seeking students including International and unknown

**Northwest**
**Fall 2019**

	UG, Degree Seeking			Graduate/Professional, Degree Seeking			Total, Degree Seeking			
	<i>Numerators</i>	Count	% of Known, Domestic Total	% of Total	Count	% of Known, Domestic Total	% of Total	Count	% of Known, Domestic Total	% of Total
Hispanic/Latino		823	25.4%	25.0%	55	16.0%	15.9%	878	24.5%	24.2%
African American		498	15.4%	15.2%	95	27.7%	27.4%	593	16.5%	16.3%
Asian		95	2.9%	2.9%	7	2.0%	2.0%	102	2.8%	2.8%
American Indian		2	0.1%	0.1%	0	0.0%	0.0%	2	0.1%	0.1%
Pacific Islander		1	0.0%	0.0%	0	0.0%	0.0%	1	0.0%	0.0%
Two or More Races		133	4.1%	4.0%	6	1.7%	1.7%	139	3.9%	3.8%
<b>Single Race Selections w/in Two or More Races</b>										
African American		75			2			77		
Asian		35			4			39		
American Indian		35			2			37		
Pacific Islander		12			2			14		
White		120			3			123		
White		1,690	52.1%	51.4%	180	52.5%	51.9%	1,870	52.2%	51.5%
International <sup>1</sup>		18		0.5%	0		0.0%	18		0.5%
Unknown		26		0.8%	4		1.2%	30		0.8%
Students of Color <sup>2</sup>		1,552	47.9%	47.2%	163	47.5%	47.0%	1,715	47.8%	47.2%
Underrepresented Students of Color <sup>3</sup>		1,457	44.9%	44.3%	156	45.5%	45.0%	1,613	45.0%	44.4%
<b>Denominators</b>										
Known, Domestic Total <sup>4</sup>		3,242			343			3,585		
Total <sup>5</sup>		3,286			347			3,633		

<sup>1</sup> "International" - International student headcounts are based only on the student visa permit category of non-resident alien (i.e. excluding naturalized U.S. citizens and permanent residents). IA international student reporting is based on guidelines from the federal Integrated Postsecondary Education Data System (IPEDS).

<sup>2</sup> "Students of Color" - Hispanic, African American, Asian, American Indian

<sup>3</sup> "Underrepresented Students of Color" - All Students of Color less Asian

<sup>4</sup> "Known, Domestic Total" - All Students of Color plus White. Excludes International and unknown.

<sup>5</sup> "Total" - All degree seeking students including International and unknown

**Northwest**
**Fall 2018**

	UG, Degree Seeking			Graduate/Professional, Degree Seeking			Total, Degree Seeking			
	<i>Numerators</i>	Count	% of Known, Domestic Total	% of Total	Count	% of Known, Domestic Total	% of Total	Count	% of Known, Domestic Total	% of Total
Hispanic/Latino	817	24.5%	24.2%	70	19.3%	19.1%	887	24.0%	23.7%	
African American	522	15.7%	15.4%	78	21.5%	21.3%	600	16.2%	16.0%	
Asian	104	3.1%	3.1%	1	0.3%	0.3%	105	2.8%	2.8%	
American Indian	5	0.1%	0.1%	1	0.3%	0.3%	6	0.2%	0.2%	
Pacific Islander	0	0.0%	0.0%	0	0.0%	0.0%	0	0.0%	0.0%	
Two or More Races	99	3.0%	2.9%	5	1.4%	1.4%	104	2.8%	2.8%	
<b>Single Race Selections w/in Two or More Races</b>										
African American	55			2			57			
Asian	29			0			29			
American Indian	26			4			30			
Pacific Islander	14			0			14			
White	84			4			88			
White	1,787	53.6%	52.9%	207	57.2%	56.4%	1,994	54.0%	53.2%	
International <sup>1</sup>	15		0.4%	2		0.5%	17		0.5%	
Unknown	31		0.9%	3		0.8%	34		0.9%	
Students of Color <sup>2</sup>	1,547	46.4%	45.8%	155	42.8%	42.2%	1,702	46.0%	45.4%	
Underrepresented Students of Color <sup>3</sup>	1,443	43.3%	42.7%	154	42.5%	42.0%	1,597	43.2%	42.6%	
<b>Denominators</b>										
Known, Domestic Total <sup>4</sup>	3,334			362			3,696			
Total <sup>5</sup>	3,380			367			3,747			

<sup>1</sup> "International" - International student headcounts are based only on the student visa permit category of non-resident alien (i.e. excluding naturalized U.S. citizens and permanent residents). IA international student reporting is based on guidelines from the federal Integrated Postsecondary Education Data System (IPEDS).

<sup>2</sup> "Students of Color" - Hispanic, African American, Asian, American Indian

<sup>3</sup> "Underrepresented Students of Color" - All Students of Color less Asian

<sup>4</sup> "Known, Domestic Total" - All Students of Color plus White. Excludes International and unknown.

<sup>5</sup> "Total" - All degree seeking students including International and unknown

**Northwest**
**Fall 2017**

<i>Numerators</i>	UG, Degree Seeking			Graduate/Professional, Degree Seeking			Total, Degree Seeking		
	Count	% of Known, Domestic Total	% of Total	Count	% of Known, Domestic Total	% of Total	Count	% of Known, Domestic Total	% of Total
Hispanic/Latino	812	23.1%	22.9%	56	16.5%	16.3%	868	22.5%	22.3%
African American	592	16.9%	16.7%	95	28.0%	27.7%	687	17.8%	17.7%
Asian	105	3.0%	3.0%	4	1.2%	1.2%	109	2.8%	2.8%
American Indian	7	0.2%	0.2%	0	0.0%	0.0%	7	0.2%	0.2%
Pacific Islander	0	0.0%	0.0%	0	0.0%	0.0%	0	0.0%	0.0%
Two or More Races	106	3.0%	3.0%	7	2.1%	2.0%	113	2.9%	2.9%
<b>Single Race Selections w/in Two or More Races</b>									
African American	51			5			56		
Asian	34			1			35		
American Indian	33			3			36		
Pacific Islander	15			0			15		
White	91			5			96		
White	1,891	53.8%	53.3%	177	52.2%	51.6%	2,068	53.7%	53.1%
International <sup>1</sup>	14		0.4%	2		0.6%	16		0.4%
Unknown	22		0.6%	2		0.6%	24		0.6%
Students of Color <sup>2</sup>	1,622	46.2%	45.7%	162	47.8%	47.2%	1,784	46.3%	45.8%
Underrepresented Students of Color <sup>3</sup>	1,517	43.2%	42.7%	158	46.6%	46.1%	1,675	43.5%	43.0%
<b>Denominators</b>									
Known, Domestic Total <sup>4</sup>	3,513			339			3,852		
Total <sup>5</sup>	3,549			343			3,892		

<sup>1</sup> "International" - International student headcounts are based only on the student visa permit category of non-resident alien (i.e. excluding naturalized U.S. citizens and permanent residents). IA international student reporting is based on guidelines from the federal Integrated Postsecondary Education Data System (IPEDS).

<sup>2</sup> "Students of Color" - Hispanic, African American, Asian, American Indian

<sup>3</sup> "Underrepresented Students of Color" - All Students of Color less Asian

<sup>4</sup> "Known, Domestic Total" - All Students of Color plus White. Excludes International and unknown.

<sup>5</sup> "Total" - All degree seeking students including International and unknown



**Northwest**
**Fall 2016**

	UG, Degree Seeking			Graduate/Professional, Degree Seeking			Total, Degree Seeking		
		% of Known, Domestic	% of Total		% of Known, Domestic	% of Total		% of Known, Domestic	% of Total
<i>Numerators</i>	Count	Total	Total	Count	Total	Total	Count	Total	Total
Hispanic/Latino	818	22.3%	21.9%	46	13.9%	13.6%	864	21.6%	21.3%
African American	607	16.5%	16.3%	98	29.5%	29.1%	705	17.6%	17.3%
Asian	92	2.5%	2.5%	4	1.2%	1.2%	96	2.4%	2.4%
American Indian	6	0.2%	0.2%	0	0.0%	0.0%	6	0.1%	0.1%
Pacific Islander	1	0.0%	0.0%	0	0.0%	0.0%	1	0.0%	0.0%
Two or More Races	109	3.0%	2.9%	5	1.5%	1.5%	114	2.8%	2.8%
Single Race Selections w/in Two or More Races									
African American	53			5			58		
Asian	33			1			34		
American Indian	34			1			35		
Pacific Islander	16			0			16		
White	93			4			97		
White	2,038	55.5%	54.7%	179	53.9%	53.1%	2,217	55.4%	54.6%
International <sup>1</sup>	12		0.3%	3		0.9%	15		0.4%
Unknown	44		1.2%	2		0.6%	46		1.1%
Students of Color <sup>2</sup>	1,633	44.5%	43.8%	153	46.1%	45.4%	1,786	44.6%	43.9%
Underrepresented Students of Color <sup>3</sup>	1,541	42.0%	41.3%	149	44.9%	44.2%	1,690	42.2%	41.6%
<i>Denominators</i>									
Known, Domestic Total <sup>4</sup>	3,671			332			4,003		
Total <sup>5</sup>	3,727			337			4,064		

<sup>1</sup> "International" - International student headcounts are based only on the student visa permit category of non-resident alien (i.e. excluding naturalized U.S. citizens and permanent residents). IA international student reporting is based on guidelines from the federal Integrated Postsecondary Education Data System (IPEDS).

<sup>2</sup> "Students of Color" - Hispanic, African American, Asian, American Indian

<sup>3</sup> "Underrepresented Students of Color" - All Students of Color less Asian

<sup>4</sup> "Known, Domestic Total" - All Students of Color plus White. Excludes International and unknown.

<sup>5</sup> "Total" - All degree seeking students including International and unknown

**Northwest**
**Fall 2015**

<i>Numerators</i>	UG, Degree Seeking			Graduate/Professional, Degree Seeking			Total, Degree Seeking		
	Count	% of Known, Domestic Total	% of Total	Count	% of Known, Domestic Total	% of Total	Count	% of Known, Domestic Total	% of Total
Hispanic/Latino	841	20.8%	20.4%	43	12.3%	12.1%	884	20.1%	19.8%
African American	722	17.8%	17.5%	111	31.8%	31.4%	833	18.9%	18.6%
Asian	96	2.4%	2.3%	4	1.1%	1.1%	100	2.3%	2.2%
American Indian	9	0.2%	0.2%	0	0.0%	0.0%	9	0.2%	0.2%
Pacific Islander	1	0.0%	0.0%	0	0.0%	0.0%	1	0.0%	0.0%
Two or More Races	113	2.8%	2.7%	5	1.4%	1.4%	118	2.7%	2.6%
<b>Single Race Selections w/in Two or More Races</b>									
African American	60			3			63		
Asian	36			2			38		
American Indian	36			2			38		
Pacific Islander	19			0			19		
White	96			4			100		
White	2,270	56.0%	55.1%	186	53.3%	52.5%	2,456	55.8%	54.9%
International <sup>1</sup>	10		0.2%	2		0.6%	12		0.3%
Unknown	55		1.3%	3		0.8%	58		1.3%
Students of Color <sup>2</sup>	1,782	44.0%	43.3%	163	46.7%	46.0%	1,945	44.2%	43.5%
Underrepresented Students of Color <sup>3</sup>	1,686	41.6%	41.0%	159	45.6%	44.9%	1,845	41.9%	41.3%
<b>Denominators</b>									
Known, Domestic Total <sup>4</sup>	4,052			349			4,401		
Total <sup>5</sup>	4,117			354			4,471		

<sup>1</sup> "International" - International student headcounts are based only on the student visa permit category of non-resident alien (i.e. excluding naturalized U.S. citizens and permanent residents). IA international student reporting is based on guidelines from the federal Integrated Postsecondary Education Data System (IPEDS).

<sup>2</sup> "Students of Color" - Hispanic, African American, Asian, American Indian

<sup>3</sup> "Underrepresented Students of Color" - All Students of Color less Asian

<sup>4</sup> "Known, Domestic Total" - All Students of Color plus White. Excludes International and unknown.

<sup>5</sup> "Total" - All degree seeking students including International and unknown

**Northwest**
**Fall 2014**

<i>Numerators</i>	UG, Degree Seeking			Graduate/Professional, Degree Seeking			Total, Degree Seeking		
	Count	% of Known, Domestic Total	% of Total	Count	% of Known, Domestic Total	% of Total	Count	% of Known, Domestic Total	% of Total
Hispanic/Latino	848	19.7%	19.4%	43	11.3%	11.1%	891	19.1%	18.7%
African American	805	18.7%	18.4%	137	36.1%	35.3%	942	20.1%	19.8%
Asian	98	2.3%	2.2%	4	1.1%	1.0%	102	2.2%	2.1%
American Indian	5	0.1%	0.1%	0	0.0%	0.0%	5	0.1%	0.1%
Pacific Islander	3	0.1%	0.1%	0	0.0%	0.0%	3	0.1%	0.1%
Two or More Races	103	2.4%	2.4%	2	0.5%	0.5%	105	2.2%	2.2%
<b>Single Race Selections w/in Two or More Races</b>									
African American	57			1			58		
Asian	31			1			32		
American Indian	29			0			29		
Pacific Islander	13			0			13		
White	90			2			92		
White	2,435	56.7%	55.7%	193	50.9%	49.7%	2,628	56.2%	55.2%
International <sup>1</sup>	5		0.1%	0		0.0%	5		0.1%
Unknown	68		1.6%	9		2.3%	77		1.6%
Students of Color <sup>2</sup>	1,862	43.3%	42.6%	186	49.1%	47.9%	2,048	43.8%	43.0%
Underrepresented Students of Color <sup>3</sup>	1,764	41.1%	40.4%	182	48.0%	46.9%	1,946	41.6%	40.9%
<b>Denominators</b>									
Known, Domestic Total <sup>4</sup>	4,297			379			4,676		
Total <sup>5</sup>	4,370			388			4,758		

<sup>1</sup> "International" - International student headcounts are based only on the student visa permit category of non-resident alien (i.e. excluding naturalized U.S. citizens and permanent residents). IA international student reporting is based on guidelines from the federal Integrated Postsecondary Education Data System (IPEDS).

<sup>2</sup> "Students of Color" - Hispanic, African American, Asian, American Indian

<sup>3</sup> "Underrepresented Students of Color" - All Students of Color less Asian

<sup>4</sup> "Known, Domestic Total" - All Students of Color plus White. Excludes International and unknown.

<sup>5</sup> "Total" - All degree seeking students including International and unknown

**Northwest**
**Fall 2013**

	UG, Degree Seeking			Graduate/Professional, Degree Seeking			Total, Degree Seeking			
	<i>Numerators</i>	Count	% of Known, Domestic Total	% of Total	Count	% of Known, Domestic Total	% of Total	Count	% of Known, Domestic Total	% of Total
Hispanic/Latino		825	17.7%	17.3%	48	10.5%	10.1%	873	17.0%	16.7%
African American		944	20.2%	19.8%	180	39.4%	38.1%	1,124	21.9%	21.5%
Asian		108	2.3%	2.3%	12	2.6%	2.5%	120	2.3%	2.3%
American Indian		11	0.2%	0.2%	1	0.2%	0.2%	12	0.2%	0.2%
Pacific Islander		8	0.2%	0.2%	0	0.0%	0.0%	8	0.2%	0.2%
Two or More Races		95	2.0%	2.0%	1	0.2%	0.2%	96	1.9%	1.8%
<b>Single Race Selections w/in Two or More Races</b>										
African American		48			1			49		
Asian		24			0			24		
American Indian		39			0			39		
Pacific Islander		14			0			14		
White		79			1			80		
White		2,680	57.4%	56.3%	215	47.0%	45.5%	2,895	56.5%	55.3%
International <sup>1</sup>		5		0.1%	1		0.2%	6		0.1%
Unknown		88		1.8%	15		3.2%	103		2.0%
Students of Color <sup>2</sup>		1,991	42.6%	41.8%	242	53.0%	51.2%	2,233	43.5%	42.6%
Underrepresented Students of Color <sup>3</sup>		1,883	40.3%	39.5%	230	50.3%	48.6%	2,113	41.2%	40.3%
<b>Denominators</b>										
Known, Domestic Total <sup>4</sup>		4,671			457			5,128		
Total <sup>5</sup>		4,764			473			5,237		

<sup>1</sup> "International" - International student headcounts are based only on the student visa permit category of non-resident alien (i.e. excluding naturalized U.S. citizens and permanent residents). IA international student reporting is based on guidelines from the federal Integrated Postsecondary Education Data System (IPEDS).

<sup>2</sup> "Students of Color" - Hispanic, African American, Asian, American Indian

<sup>3</sup> "Underrepresented Students of Color" - All Students of Color less Asian

<sup>4</sup> "Known, Domestic Total" - All Students of Color plus White. Excludes International and unknown.

<sup>5</sup> "Total" - All degree seeking students including International and unknown

**Northwest**
**Fall 2012**

	UG, Degree Seeking			Graduate/Professional, Degree Seeking			Total, Degree Seeking			
	<i>Numerators</i>	Count	% of Known, Domestic Total	% of Total	Count	% of Known, Domestic Total	% of Total	Count	% of Known, Domestic Total	% of Total
Hispanic/Latino	778	16.5%	16.2%	50	9.6%	9.4%	828	15.8%	15.5%	
African American	1,081	23.0%	22.4%	209	40.1%	39.2%	1,290	24.7%	24.1%	
Asian	100	2.1%	2.1%	10	1.9%	1.9%	110	2.1%	2.1%	
American Indian	11	0.2%	0.2%	1	0.2%	0.2%	12	0.2%	0.2%	
Pacific Islander	7	0.1%	0.1%	0	0.0%	0.0%	7	0.1%	0.1%	
Two or More Races	75	1.6%	1.6%	2	0.4%	0.4%	77	1.5%	1.4%	
<b>Single Race Selections w/in Two or More Races</b>										
African American	43			1			44			
Asian	19			1			20			
American Indian	25			1			26			
Pacific Islander	4			0			4			
White	63			1			64			
White	2,654	56.4%	55.1%	249	47.8%	46.7%	2,903	55.5%	54.3%	
International <sup>1</sup>	3		0.1%	2		0.4%	5		0.1%	
Unknown	108		2.2%	10		1.9%	118		2.2%	
Students of Color <sup>2</sup>	2,052	43.6%	42.6%	272	52.2%	51.0%	2,324	44.5%	43.4%	
Underrepresented Students of Color <sup>3</sup>	1,952	41.5%	40.5%	262	50.3%	49.2%	2,214	42.4%	41.4%	
<b>Denominators</b>										
Known, Domestic Total <sup>4</sup>	4,706			521			5,227			
Total <sup>5</sup>	4,817			533			5,350			

<sup>1</sup> "International" - International student headcounts are based only on the student visa permit category of non-resident alien (i.e. excluding naturalized U.S. citizens and permanent residents). IA international student reporting is based on guidelines from the federal Integrated Postsecondary Education Data System (IPEDS).

<sup>2</sup> "Students of Color" - Hispanic, African American, Asian, American Indian

<sup>3</sup> "Underrepresented Students of Color" - All Students of Color less Asian

<sup>4</sup> "Known, Domestic Total" - All Students of Color plus White. Excludes International and unknown.

<sup>5</sup> "Total" - All degree seeking students including International and unknown

**Northwest**
**Fall 2011**

	UG, Degree Seeking			Graduate/Professional, Degree Seeking			Total, Degree Seeking			
	<i>Numerators</i>	Count	% of Known, Domestic Total	% of Total	Count	% of Known, Domestic Total	% of Total	Count	% of Known, Domestic Total	% of Total
Hispanic/Latino	768	16.0%	15.5%	51	8.9%	8.7%	819	15.3%	14.8%	
African American	1,119	23.3%	22.6%	245	42.6%	41.7%	1,364	25.4%	24.6%	
Asian	87	1.8%	1.8%	9	1.6%	1.5%	96	1.8%	1.7%	
American Indian	12	0.3%	0.2%	3	0.5%	0.5%	15	0.3%	0.3%	
Pacific Islander	4	0.1%	0.1%	0	0.0%	0.0%	4	0.1%	0.1%	
Two or More Races	70	1.5%	1.4%	6	1.0%	1.0%	76	1.4%	1.4%	
<b>Single Race Selections w/in Two or More Races</b>										
African American	42			5			47			
Asian	17			1			18			
American Indian	25			3			28			
Pacific Islander	2			0			2			
White	58			4			62			
White	2,733	57.0%	55.1%	261	45.4%	44.4%	2,994	55.8%	54.0%	
International <sup>1</sup>	8		0.2%	1		0.2%	9		0.2%	
Unknown	159		3.2%	12		2.0%	171		3.1%	
Students of Color <sup>2</sup>	2,060	43.0%	41.5%	314	54.6%	53.4%	2,374	44.2%	42.8%	
Underrepresented Students of Color <sup>3</sup>	1,973	41.2%	39.8%	305	53.0%	51.9%	2,278	42.4%	41.1%	
<b>Denominators</b>										
Known, Domestic Total <sup>4</sup>	4,793			575			5,368			
Total <sup>5</sup>	4,960			588			5,548			

<sup>1</sup> "International" - International student headcounts are based only on the student visa permit category of non-resident alien (i.e. excluding naturalized U.S. citizens and permanent residents). IA international student reporting is based on guidelines from the federal Integrated Postsecondary Education Data System (IPEDS).

<sup>2</sup> "Students of Color" - Hispanic, African American, Asian, American Indian

<sup>3</sup> "Underrepresented Students of Color" - All Students of Color less Asian

<sup>4</sup> "Known, Domestic Total" - All Students of Color plus White. Excludes International and unknown.

<sup>5</sup> "Total" - All degree seeking students including International and unknown

**Northwest**
**Fall 2010**

	UG, Degree Seeking			Graduate/Professional, Degree Seeking			Total, Degree Seeking			
	<i>Numerators</i>	Count	% of Known, Domestic Total	% of Total	Count	% of Known, Domestic Total	% of Total	Count	% of Known, Domestic Total	% of Total
Hispanic/Latino	736	15.4%	14.9%	54	9.3%	9.1%	790	14.8%	14.2%	
African American	1,099	23.1%	22.2%	238	41.2%	39.9%	1,337	25.0%	24.1%	
Asian	99	2.1%	2.0%	9	1.6%	1.5%	108	2.0%	1.9%	
American Indian	13	0.3%	0.3%	2	0.3%	0.3%	15	0.3%	0.3%	
Pacific Islander	5	0.1%	0.1%	0	0.0%	0.0%	5	0.1%	0.1%	
Two or More Races	43	0.9%	0.9%	5	0.9%	0.8%	48	0.9%	0.9%	
<b>Single Race Selections w/in Two or More Races</b>										
African American	26			4			30			
Asian	10			1			11			
American Indian	20			3			23			
Pacific Islander	2			0			2			
White	32			3			35			
White	2,771	58.1%	56.0%	270	46.7%	45.3%	3,041	56.9%	54.8%	
International <sup>1</sup>	9		0.2%	0		0.0%	9		0.2%	
Unknown	176		3.6%	18		3.0%	194		3.5%	
Students of Color <sup>2</sup>	1,995	41.9%	40.3%	308	53.3%	51.7%	2,303	43.1%	41.5%	
Underrepresented Students of Color <sup>3</sup>	1,896	39.8%	38.3%	299	51.7%	50.2%	2,195	41.1%	39.6%	
<b>Denominators</b>										
Known, Domestic Total <sup>4</sup>	4,766			578			5,344			
Total <sup>5</sup>	4,951			596			5,547			

<sup>1</sup> "International" - International student headcounts are based only on the student visa permit category of non-resident alien (i.e. excluding naturalized U.S. citizens and permanent residents). IA international student reporting is based on guidelines from the federal Integrated Postsecondary Education Data System (IPEDS).

<sup>2</sup> "Students of Color" - Hispanic, African American, Asian, American Indian

<sup>3</sup> "Underrepresented Students of Color" - All Students of Color less Asian

<sup>4</sup> "Known, Domestic Total" - All Students of Color plus White. Excludes International and unknown.

<sup>5</sup> "Total" - All degree seeking students including International and unknown

**Northwest**
**Fall 2009**

	UG, Degree Seeking			Graduate/Professional, Degree Seeking			Total, Degree Seeking		
		% of Known, Domestic	% of Total		% of Known, Domestic	% of Total		% of Known, Domestic	% of Total
<i>Numerators</i>	Count	Total	Total	Count	Total	Total	Count	Total	Total
Hispanic/Latino	569	13.4%	12.6%	47	8.5%	8.2%	616	12.9%	12.1%
African American	969	22.9%	21.4%	219	39.8%	38.4%	1,188	24.8%	23.3%
Asian	99	2.3%	2.2%	7	1.3%	1.2%	106	2.2%	2.1%
American Indian	19	0.4%	0.4%	2	0.4%	0.4%	21	0.4%	0.4%
White	2,582	60.9%	57.0%	275	50.0%	48.2%	2,857	59.7%	56.0%
International <sup>1</sup>	10		0.2%	3		0.5%	13		0.3%
Unknown	283		6.2%	18		3.2%	301		5.9%
Students of Color <sup>2</sup>	1,656	39.1%	36.5%	275	50.0%	48.2%	1,931	40.3%	37.8%
Underrepresented Students of Color <sup>3</sup>	1,557	36.7%	34.4%	268	48.7%	46.9%	1,825	38.1%	35.8%
<i>Denominators</i>									
Known, Domestic Total <sup>4</sup>	4,238			550			4,788		
Total <sup>5</sup>	4,531			571			5,102		

<sup>1</sup> "International" - International student headcounts are based only on the student visa permit category of non-resident alien (i.e. excluding naturalized U.S. citizens and permanent residents). IA international student reporting is based on guidelines from the federal Integrated Postsecondary Education Data System (IPEDS).

<sup>2</sup> "Students of Color" - Hispanic, African American, Asian, American Indian

<sup>3</sup> "Underrepresented Students of Color" - All Students of Color less Asian

<sup>4</sup> "Known, Domestic Total" - All Students of Color plus White. Excludes International and unknown.

<sup>5</sup> "Total" - All degree seeking students including International and unknown



**Northwest**
**Fall 2008**

	UG, Degree Seeking			Graduate/Professional, Degree Seeking			Total, Degree Seeking		
		% of Known, Domestic	% of Total		% of Known, Domestic	% of Total		% of Known, Domestic	% of Total
<i>Numerators</i>	Count	Total	Total	Count	Total	Total	Count	Total	Total
Hispanic/Latino	526	13.9%	13.2%	39	9.1%	8.5%	565	13.4%	12.7%
African American	792	20.9%	19.9%	170	39.8%	37.1%	962	22.8%	21.7%
Asian	75	2.0%	1.9%	5	1.2%	1.1%	80	1.9%	1.8%
American Indian	26	0.7%	0.7%	2	0.5%	0.4%	28	0.7%	0.6%
White	2,366	62.5%	59.5%	211	49.4%	46.1%	2,577	61.2%	58.1%
International <sup>1</sup>	10		0.3%	2		0.4%	12		0.3%
Unknown	179		4.5%	29		6.3%	208		4.7%
Students of Color <sup>2</sup>	1,419	37.5%	35.7%	216	50.6%	47.2%	1,635	38.8%	36.9%
Underrepresented Students of Color <sup>3</sup>	1,344	35.5%	33.8%	211	49.4%	46.1%	1,555	36.9%	35.1%
<i>Denominators</i>									
Known, Domestic Total <sup>4</sup>	3,785			427			4,212		
Total <sup>5</sup>	3,974			458			4,432		

<sup>1</sup> "International" - International student headcounts are based only on the student visa permit category of non-resident alien (i.e. excluding naturalized U.S. citizens and permanent residents). IA international student reporting is based on guidelines from the federal Integrated Postsecondary Education Data System (IPEDS).

<sup>2</sup> "Students of Color" - Hispanic, African American, Asian, American Indian

<sup>3</sup> "Underrepresented Students of Color" - All Students of Color less Asian

<sup>4</sup> "Known, Domestic Total" - All Students of Color plus White. Excludes International and unknown.

<sup>5</sup> "Total" - All degree seeking students including International and unknown

**Northwest**

**Fall 2007**

	UG, Degree Seeking			Graduate/Professional, Degree Seeking			Total, Degree Seeking		
	Count	% of Known, Domestic Total	% of Total	Count	% of Known, Domestic Total	% of Total	Count	% of Known, Domestic Total	% of Total
<i>Numerators</i>									
Hispanic/Latino	481	12.5%	12.1%	43	9.8%	9.5%	524	12.3%	11.9%
African American	865	22.6%	21.8%	168	38.1%	37.1%	1,033	24.2%	23.4%
Asian	74	1.9%	1.9%	8	1.8%	1.8%	82	1.9%	1.9%
American Indian	16	0.4%	0.4%	2	0.5%	0.4%	18	0.4%	0.4%
White	2,397	62.5%	60.5%	220	49.9%	48.6%	2,617	61.2%	59.2%
International <sup>1</sup>	8		0.2%	3		0.7%	11		0.2%
Unknown	124		3.1%	9		2.0%	133		3.0%
Students of Color <sup>2</sup>	1,436	37.5%	36.2%	221	50.1%	48.8%	1,657	38.8%	37.5%
Underrepresented Students of Color <sup>3</sup>	1,362	35.5%	34.4%	213	48.3%	47.0%	1,575	36.9%	35.6%
<i>Denominators</i>									
Known, Domestic Total <sup>4</sup>	3,833			441			4,274		
Total <sup>5</sup>	3,965			453			4,418		

<sup>1</sup> "International" - International student headcounts are based only on the student visa permit category of non-resident alien (i.e. excluding naturalized U.S. citizens and permanent residents). IA international student reporting is based on guidelines from the federal Integrated Postsecondary Education Data System (IPEDS).

<sup>2</sup> "Students of Color" - Hispanic, African American, Asian, American Indian

<sup>3</sup> "Underrepresented Students of Color" - All Students of Color less Asian

<sup>4</sup> "Known, Domestic Total" - All Students of Color plus White. Excludes International and unknown.

<sup>5</sup> "Total" - All degree seeking students including International and unknown

**Northwest**
**Fall 2006**

	UG, Degree Seeking			Graduate/Professional, Degree Seeking			Total, Degree Seeking		
		% of Known, Domestic	% of Total		% of Known, Domestic	% of Total		% of Known, Domestic	% of Total
<i>Numerators</i>	Count	Total	Total	Count	Total	Total	Count	Total	Total
Hispanic/Latino	511	13.2%	12.8%	28	7.1%	7.0%	539	12.6%	12.2%
African American	856	22.1%	21.4%	155	39.4%	38.7%	1,011	23.7%	23.0%
Asian	64	1.6%	1.6%	4	1.0%	1.0%	68	1.6%	1.5%
American Indian	14	0.4%	0.3%	1	0.3%	0.2%	15	0.4%	0.3%
White	2,436	62.8%	60.9%	205	52.2%	51.1%	2,641	61.8%	60.0%
International <sup>1</sup>	9		0.2%	1		0.2%	10		0.2%
Unknown	113		2.8%	7		1.7%	120		2.7%
Students of Color <sup>2</sup>	1,445	37.2%	36.1%	188	47.8%	46.9%	1,633	38.2%	37.1%
Underrepresented Students of Color <sup>3</sup>	1,381	35.6%	34.5%	184	46.8%	45.9%	1,565	36.6%	35.5%
<i>Denominators</i>									
Known, Domestic Total <sup>4</sup>	3,881			393			4,274		
Total <sup>5</sup>	4,003			401			4,404		

<sup>1</sup> "International" - International student headcounts are based only on the student visa permit category of non-resident alien (i.e. excluding naturalized U.S. citizens and permanent residents). IA international student reporting is based on guidelines from the federal Integrated Postsecondary Education Data System (IPEDS).

<sup>2</sup> "Students of Color" - Hispanic, African American, Asian, American Indian

<sup>3</sup> "Underrepresented Students of Color" - All Students of Color less Asian

<sup>4</sup> "Known, Domestic Total" - All Students of Color plus White. Excludes International and unknown.

<sup>5</sup> "Total" - All degree seeking students including International and unknown

**Northwest**
**Fall 2005**

	UG, Degree Seeking			Graduate/Professional, Degree Seeking			Total, Degree Seeking		
		% of Known, Domestic	% of Total		% of Known, Domestic	% of Total		% of Known, Domestic	% of Total
<i>Numerators</i>	Count	Total	Total	Count	Total	Total	Count	Total	Total
Hispanic/Latino	480	12.3%	11.9%	22	5.8%	5.7%	502	11.7%	11.3%
African American	907	23.2%	22.4%	159	42.1%	41.2%	1,066	24.8%	24.1%
Asian	58	1.5%	1.4%	5	1.3%	1.3%	63	1.5%	1.4%
American Indian	13	0.3%	0.3%	1	0.3%	0.3%	14	0.3%	0.3%
White	2,458	62.8%	60.8%	191	50.5%	49.5%	2,649	61.7%	59.8%
International <sup>1</sup>	7		0.2%	0		0.0%	7		0.2%
Unknown	119		2.9%	8		2.1%	127		2.9%
Students of Color <sup>2</sup>	1,458	37.2%	36.1%	187	49.5%	48.4%	1,645	38.3%	37.1%
Underrepresented Students of Color <sup>3</sup>	1,400	35.8%	34.6%	182	48.1%	47.2%	1,582	36.8%	35.7%
<i>Denominators</i>									
Known, Domestic Total <sup>4</sup>	3,916			378			4,294		
Total <sup>5</sup>	4,042			386			4,428		

<sup>1</sup> "International" - International student headcounts are based only on the student visa permit category of non-resident alien (i.e. excluding naturalized U.S. citizens and permanent residents). IA international student reporting is based on guidelines from the federal Integrated Postsecondary Education Data System (IPEDS).

<sup>2</sup> "Students of Color" - Hispanic, African American, Asian, American Indian

<sup>3</sup> "Underrepresented Students of Color" - All Students of Color less Asian

<sup>4</sup> "Known, Domestic Total" - All Students of Color plus White. Excludes International and unknown.

<sup>5</sup> "Total" - All degree seeking students including International and unknown