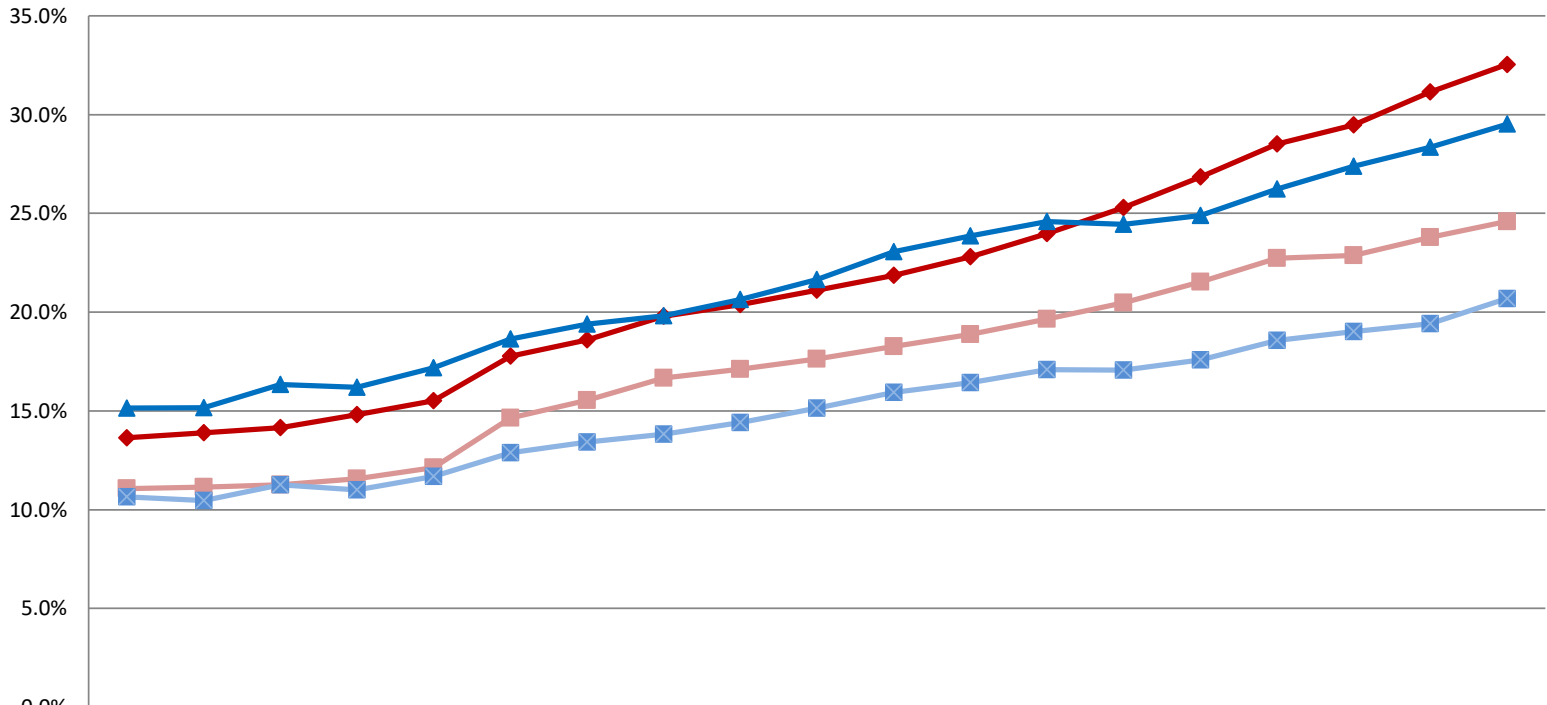


**IU Campus Total**

**Proportion of Degree-Seeking Students of Color Among Known, Domestic Students**



	2005	2006	2007	2008	2009	2010	2011	2012	2013	2014	2015	2016	2017	2018	2019	2020	2021	2022	2023
UG-Students of Color	13.6%	13.9%	14.2%	14.8%	15.5%	17.8%	18.6%	19.8%	20.4%	21.1%	21.9%	22.8%	24.0%	25.3%	26.9%	28.5%	29.5%	31.1%	32.5%
UG URSC	11.1%	11.1%	11.3%	11.6%	12.1%	14.6%	15.5%	16.7%	17.1%	17.6%	18.3%	18.9%	19.7%	20.5%	21.5%	22.7%	22.9%	23.8%	24.6%
Grad-Students of Color	15.1%	15.2%	16.3%	16.2%	17.2%	18.6%	19.4%	19.8%	20.6%	21.7%	23.1%	23.9%	24.6%	24.5%	24.9%	26.2%	27.4%	28.4%	29.5%
Grad-URSC	10.6%	10.5%	11.3%	11.0%	11.7%	12.9%	13.4%	13.8%	14.4%	15.1%	15.9%	16.4%	17.1%	17.1%	17.6%	18.6%	19.0%	19.4%	20.7%

**IU Campus Total**
**Fall 2023**

	UG, Degree Seeking			Graduate/Professional, Degree Seeking			Total, Degree Seeking		
	<i>Numerators</i>	Count	% of Known, Domestic	Count	% of Known, Domestic	Count	Count	% of Known, Domestic	Count
			Total		Total			Total	
Hispanic/Latino	7,628	11.8%	11.3%	1,301	8.6%	6.4%	8,929	11.2%	10.2%
African American	4,555	7.0%	6.8%	1,192	7.9%	5.9%	5,747	7.2%	6.6%
Asian	5,149	7.9%	7.6%	1,339	8.8%	6.6%	6,488	8.1%	7.4%
American Indian	35	0.1%	0.1%	12	0.1%	0.1%	47	0.1%	0.1%
Pacific Islander	18	0.0%	0.0%	4	0.0%	0.0%	22	0.0%	0.0%
Two or More Races	3,698	5.7%	5.5%	632	4.2%	3.1%	4,330	5.4%	4.9%
Single Race Selections w/in Two or More Races									
African American	1,510			241			1,751		
Asian	1,677			331			2,008		
American Indian	802			120			922		
Pacific Islander	287			40			327		
White	3,410			589			3,999		
White	43,707	67.5%	64.9%	10,700	70.5%	52.9%	54,407	68.0%	62.1%
International <sup>1</sup>	2,233		3.3%	4,887		24.1%	7,120		8.1%
Unknown	361		0.5%	177		0.9%	538		0.6%
Students of Color <sup>2</sup>	21,083	32.5%	31.3%	4,480	29.5%	22.1%	25,563	32.0%	29.2%
Underrepresented Students of Color <sup>3</sup>	15,934	24.6%	23.6%	3,141	20.7%	15.5%	19,075	23.9%	21.8%
<i>Denominators</i>									
Known, Domestic Total <sup>4</sup>	64,790			15,180			79,970		
Total <sup>5</sup>	67,384			20,244			87,628		

<sup>1</sup> "International" - International student headcounts are based only on the student visa permit category of U.S. Nonresidents (i.e. excluding naturalized U.S. citizens and permanent residents). IA international student reporting is based on guidelines from the federal Integrated Postsecondary Education Data System (IPEDS). As of Fall 2022, students who qualify for the Deferred Action for Childhood Arrival (DACA) program will be reported under their self-identified ethnicity. This is in contrast to prior years, when a subset of individuals who qualified for DACA were instead reported in International headcounts. The results will be a small increase in reported headcounts of Hispanic/Latino, Black/African American, and Asian students, and a corresponding small decrease in the reported headcounts of International persons.

<sup>2</sup> "Students of Color" - Hispanic, African American, Asian, American Indian

<sup>3</sup> "Underrepresented Students of Color" - All Students of Color less Asian

<sup>4</sup> "Known, Domestic Total" - All Students of Color plus White. Excludes International and unknown.

<sup>5</sup> "Total" - All degree seeking students including International and unknown

**IU Campus Total**
**Fall 2022**

	UG, Degree Seeking			Graduate/Professional, Degree Seeking			Total, Degree Seeking			
	<i>Numerators</i>	Count	% of Known, Domestic	% of Total	Count	% of Known, Domestic	% of Total	Count	% of Known, Domestic	% of Total
Hispanic/Latino	7,296	11.3%	10.9%	1,265	8.0%	6.1%	8,561	10.7%	9.7%	
African American	4,482	7.0%	6.7%	1,153	7.3%	5.5%	5,635	7.0%	6.4%	
Asian	4,738	7.4%	7.1%	1,413	8.9%	6.8%	6,151	7.7%	7.0%	
American Indian	45	0.1%	0.1%	14	0.1%	0.1%	59	0.1%	0.1%	
Pacific Islander	14	0.0%	0.0%	4	0.0%	0.0%	18	0.0%	0.0%	
Two or More Races	3,473	5.4%	5.2%	636	4.0%	3.1%	4,109	5.1%	4.7%	
<b>Single Race Selections w/in Two or More Races</b>										
African American	1,433			236			1,669			
Asian	1,577			337			1,914			
American Indian	749			118			867			
Pacific Islander	315			49			364			
White	3,157			587			3,744			
White	44,331	68.9%	66.1%	11,334	71.6%	54.5%	55,665	69.4%	63.3%	
International <sup>1</sup>	2,332		3.5%	4,758		22.9%	7,090		8.1%	
Unknown	369		0.6%	213		1.0%	582		0.7%	
Students of Color <sup>2</sup>	20,048	31.1%	29.9%	4,485	28.4%	21.6%	24,533	30.6%	27.9%	
Underrepresented Students of Color <sup>3</sup>	15,310	23.8%	22.8%	3,072	19.4%	14.8%	18,382	22.9%	20.9%	
<b>Denominators</b>										
Known, Domestic Total <sup>4</sup>	64,379			15,819			80,198			
Total <sup>5</sup>	67,080			20,790			87,870			

<sup>1</sup> "International" - International student headcounts are based only on the student visa permit category of U.S. Nonresidents (i.e. excluding naturalized U.S. citizens and permanent residents). IA international student reporting is based on guidelines from the federal Integrated Postsecondary Education Data System (IPEDS). As of Fall 2022, students who qualify for the Deferred Action for Childhood Arrival (DACA) program will be reported under their self-identified ethnicity. This is in contrast to prior years, when a subset of individuals who qualified for DACA were instead reported in International headcounts. The results will be a small increase in reported headcounts of Hispanic/Latino, Black/African American, and Asian students, and a corresponding small decrease in the reported headcounts of International persons.

<sup>2</sup> "Students of Color" - Hispanic, African American, Asian, American Indian

<sup>3</sup> "Underrepresented Students of Color" - All Students of Color less Asian

<sup>4</sup> "Known, Domestic Total" - All Students of Color plus White. Excludes International and unknown.

<sup>5</sup> "Total" - All degree seeking students including International and unknown

**IU Campus Total**
**Fall 2021**

<i>Numerators</i>	UG, Degree Seeking			Graduate/Professional, Degree Seeking			Total, Degree Seeking		
	Count	% of Known, Domestic	% of Total	Count	% of Known, Domestic	% of Total	Count	% of Known, Domestic	% of Total
Hispanic/Latino	6,869	10.5%	10.1%	1,263	7.6%	6.1%	8,132	9.9%	9.2%
African American	4,553	7.0%	6.7%	1,298	7.8%	6.3%	5,851	7.1%	6.6%
Asian	4,299	6.6%	6.3%	1,392	8.4%	6.7%	5,691	7.0%	6.4%
American Indian	40	0.1%	0.1%	14	0.1%	0.1%	54	0.1%	0.1%
Pacific Islander	15	0.0%	0.0%	8	0.0%	0.0%	23	0.0%	0.0%
Two or More Races	3,450	5.3%	5.1%	581	3.5%	2.8%	4,031	4.9%	4.5%
Single Race Selections w/in Two or More Races									
African American	1,465			215			1,680		
Asian	1,522			299			1,821		
American Indian	774			101			875		
Pacific Islander	302			53			355		
White	3,146			539			3,685		
White	46,015	70.5%	67.6%	12,080	72.6%	58.3%	58,095	71.0%	65.4%
International <sup>1</sup>	2,477		3.6%	3,861		18.6%	6,338		7.1%
Unknown	394		0.6%	234		1.1%	628		0.7%
Students of Color <sup>2</sup>	19,226	29.5%	28.2%	4,556	27.4%	22.0%	23,782	29.0%	26.8%
Underrepresented Students of Color <sup>3</sup>	14,927	22.9%	21.9%	3,164	19.0%	15.3%	18,091	22.1%	20.4%
<i>Denominators</i>									
Known, Domestic Total <sup>4</sup>	65,241			16,636			81,877		
Total <sup>5</sup>	68,112			20,731			88,843		

<sup>1</sup> "International" - International student headcounts are based only on the student visa permit category of non-resident alien (i.e. excluding naturalized U.S. citizens and permanent residents). IA international student reporting is based on guidelines from the federal Integrated Postsecondary Education Data System (IPEDS).

<sup>2</sup> "Students of Color" - Hispanic, African American, Asian, American Indian

<sup>3</sup> "Underrepresented Students of Color" - All Students of Color less Asian

<sup>4</sup> "Known, Domestic Total" - All Students of Color plus White. Excludes International and unknown.

<sup>5</sup> "Total" - All degree seeking students including International and unknown

**IU Campus Total**
**Fall 2020**

	UG, Degree Seeking			Graduate/Professional, Degree Seeking			Total, Degree Seeking			
	<i>Numerators</i>	Count	% of Known, Domestic Total	% of Total	Count	% of Known, Domestic Total	% of Total	Count	% of Known, Domestic Total	% of Total
Hispanic/Latino	6,837	10.2%	9.7%	1,159	7.1%	5.9%	7,996	9.6%	8.9%	
African American	4,914	7.3%	7.0%	1,310	8.1%	6.7%	6,224	7.5%	6.9%	
Asian	3,874	5.8%	5.5%	1,245	7.7%	6.3%	5,119	6.1%	5.7%	
American Indian	62	0.1%	0.1%	18	0.1%	0.1%	80	0.1%	0.1%	
Pacific Islander	16	0.0%	0.0%	8	0.0%	0.0%	24	0.0%	0.0%	
Two or More Races	3,439	5.1%	4.9%	519	3.2%	2.6%	3,958	4.7%	4.4%	
Single Race Selections w/in Two or More Races										
African American	1,554			185			1,739			
Asian	1,439			267			1,706			
American Indian	766			100			866			
Pacific Islander	323			49			372			
White	3,134			476			3,610			
White	48,006	71.5%	68.2%	11,976	73.8%	60.9%	59,982	71.9%	66.6%	
International <sup>1</sup>	2,846		4.0%	3,252		16.5%	6,098		6.8%	
Unknown	421		0.6%	188		1.0%	609		0.7%	
Students of Color <sup>2</sup>	19,142	28.5%	27.2%	4,259	26.2%	21.6%	23,401	28.1%	26.0%	
Underrepresented Students of Color <sup>3</sup>	15,268	22.7%	21.7%	3,014	18.6%	15.3%	18,282	21.9%	20.3%	
<b>Denominators</b>										
Known, Domestic Total <sup>4</sup>	67,148			16,235			83,383			
Total <sup>5</sup>	70,415			19,675			90,090			

<sup>1</sup> "International" - International student headcounts are based only on the student visa permit category of non-resident alien (i.e. excluding naturalized U.S. citizens and permanent residents). IA international student reporting is based on guidelines from the federal Integrated Postsecondary Education Data System (IPEDS).

<sup>2</sup> "Students of Color" - Hispanic, African American, Asian, American Indian

<sup>3</sup> "Underrepresented Students of Color" - All Students of Color less Asian

<sup>4</sup> "Known, Domestic Total" - All Students of Color plus White. Excludes International and unknown.

<sup>5</sup> "Total" - All degree seeking students including International and unknown

**IU Campus Total**
**Fall 2019**

	UG, Degree Seeking			Graduate/Professional, Degree Seeking			Total, Degree Seeking		
		% of Known, Domestic	% of Total		% of Known, Domestic	% of Total		% of Known, Domestic	% of Total
<i>Numerators</i>	Count	Total	Total	Count	Total	Total	Count	Total	Total
Hispanic/Latino	6,269	9.4%	8.8%	1,002	6.4%	5.1%	7,271	8.8%	8.0%
African American	4,815	7.2%	6.8%	1,241	7.9%	6.4%	6,056	7.3%	6.7%
Asian	3,562	5.3%	5.0%	1,147	7.3%	5.9%	4,709	5.7%	5.2%
American Indian	76	0.1%	0.1%	17	0.1%	0.1%	93	0.1%	0.1%
Pacific Islander	23	0.0%	0.0%	10	0.1%	0.1%	33	0.0%	0.0%
Two or More Races	3,251	4.9%	4.6%	484	3.1%	2.5%	3,735	4.5%	4.1%
Single Race Selections w/in Two or More Races									
African American	1,472			174			1,646		
Asian	1,319			246			1,565		
American Indian	766			92			858		
Pacific Islander	319			48			367		
White	2,976			438			3,414		
White	49,022	73.1%	68.8%	11,767	75.1%	60.2%	60,789	73.5%	67.0%
International <sup>1</sup>	3,634		5.1%	3,693		18.9%	7,327		8.1%
Unknown	563		0.8%	178		0.9%	741		0.8%
Students of Color <sup>2</sup>	17,996	26.9%	25.3%	3,901	24.9%	20.0%	21,897	26.5%	24.1%
Underrepresented Students of Color <sup>3</sup>	14,434	21.5%	20.3%	2,754	17.6%	14.1%	17,188	20.8%	18.9%
<i>Denominators</i>									
Known, Domestic Total <sup>4</sup>	67,018			15,668			82,686		
Total <sup>5</sup>	71,215			19,539			90,754		

<sup>1</sup> "International" - International student headcounts are based only on the student visa permit category of non-resident alien (i.e. excluding naturalized U.S. citizens and permanent residents). IA international student reporting is based on guidelines from the federal Integrated Postsecondary Education Data System (IPEDS).

<sup>2</sup> "Students of Color" - Hispanic, African American, Asian, American Indian

<sup>3</sup> "Underrepresented Students of Color" - All Students of Color less Asian

<sup>4</sup> "Known, Domestic Total" - All Students of Color plus White. Excludes International and unknown.

<sup>5</sup> "Total" - All degree seeking students including International and unknown

**IU Campus Total**
**Fall 2018**

	UG, Degree Seeking			Graduate/Professional, Degree Seeking			Total, Degree Seeking		
		% of Known, Domestic	% of Total		% of Known, Domestic	% of Total		% of Known, Domestic	% of Total
<i>Numerators</i>	Count	Total	Total	Count	Total	Total	Count	Total	Total
Hispanic/Latino	5,678	8.4%	7.9%	982	6.2%	5.0%	6,660	8.0%	7.3%
African American	4,869	7.2%	6.8%	1,194	7.6%	6.1%	6,063	7.3%	6.6%
Asian	3,244	4.8%	4.5%	1,160	7.4%	5.9%	4,404	5.3%	4.8%
American Indian	89	0.1%	0.1%	20	0.1%	0.1%	109	0.1%	0.1%
Pacific Islander	25	0.0%	0.0%	13	0.1%	0.1%	38	0.0%	0.0%
Two or More Races	3,108	4.6%	4.3%	474	3.0%	2.4%	3,582	4.3%	3.9%
Single Race Selections w/in Two or More Races									
African American	1,423			177			1,600		
Asian	1,221			225			1,446		
American Indian	741			102			843		
Pacific Islander	293			41			334		
White	2,865			435			3,300		
White	50,246	74.7%	69.8%	11,873	75.5%	60.6%	62,119	74.9%	67.9%
International <sup>1</sup>	4,145		5.8%	3,665		18.7%	7,810		8.5%
Unknown	534		0.7%	196		1.0%	730		0.8%
Students of Color <sup>2</sup>	17,013	25.3%	23.6%	3,843	24.5%	19.6%	20,856	25.1%	22.8%
Underrepresented Students of Color <sup>3</sup>	13,769	20.5%	19.1%	2,683	17.1%	13.7%	16,452	19.8%	18.0%
<i>Denominators</i>									
Known, Domestic Total <sup>4</sup>	67,259			15,716			82,975		
Total <sup>5</sup>	71,938			19,577			91,515		

<sup>1</sup> "International" - International student headcounts are based only on the student visa permit category of non-resident alien (i.e. excluding naturalized U.S. citizens and permanent residents). IA international student reporting is based on guidelines from the federal Integrated Postsecondary Education Data System (IPEDS).

<sup>2</sup> "Students of Color" - Hispanic, African American, Asian, American Indian

<sup>3</sup> "Underrepresented Students of Color" - All Students of Color less Asian

<sup>4</sup> "Known, Domestic Total" - All Students of Color plus White. Excludes International and unknown.

<sup>5</sup> "Total" - All degree seeking students including International and unknown

**IU Campus Total**
**Fall 2017**

<i>Numerators</i>	UG, Degree Seeking			Graduate/Professional, Degree Seeking			Total, Degree Seeking		
	Count	% of Known, Domestic	% of Total	Count	% of Known, Domestic	% of Total	Count	% of Known, Domestic	% of Total
Hispanic/Latino	5,354	7.9%	7.4%	925	6.0%	4.8%	6,279	7.5%	6.8%
African American	5,003	7.4%	6.9%	1,228	8.0%	6.3%	6,231	7.5%	6.8%
Asian	2,933	4.3%	4.0%	1,152	7.5%	5.9%	4,085	4.9%	4.4%
American Indian	99	0.1%	0.1%	20	0.1%	0.1%	119	0.1%	0.1%
Pacific Islander	33	0.0%	0.0%	14	0.1%	0.1%	47	0.1%	0.1%
Two or More Races	2,847	4.2%	3.9%	445	2.9%	2.3%	3,292	4.0%	3.6%
Single Race Selections w/in Two or More Races									
African American	1,270			145			1,415		
Asian	1,126			228			1,354		
American Indian	683			107			790		
Pacific Islander	273			36			309		
White	2,636			404			3,040		
White	51,574	76.0%	70.9%	11,611	75.4%	59.8%	63,185	75.9%	68.6%
International <sup>1</sup>	4,548		6.3%	3,800		19.6%	8,348		9.1%
Unknown	359		0.5%	219		1.1%	578		0.6%
Students of Color <sup>2</sup>	16,269	24.0%	22.4%	3,784	24.6%	19.5%	20,053	24.1%	21.8%
Underrepresented Students of Color <sup>3</sup>	13,336	19.7%	18.3%	2,632	17.1%	13.6%	15,968	19.2%	17.3%
<i>Denominators</i>									
Known, Domestic Total <sup>4</sup>	67,843			15,395			83,238		
Total <sup>5</sup>	72,750			19,414			92,164		

<sup>1</sup> "International" - International student headcounts are based only on the student visa permit category of non-resident alien (i.e. excluding naturalized U.S. citizens and permanent residents). IA international student reporting is based on guidelines from the federal Integrated Postsecondary Education Data System (IPEDS).

<sup>2</sup> "Students of Color" - Hispanic, African American, Asian, American Indian

<sup>3</sup> "Underrepresented Students of Color" - All Students of Color less Asian

<sup>4</sup> "Known, Domestic Total" - All Students of Color plus White. Excludes International and unknown.

<sup>5</sup> "Total" - All degree seeking students including International and unknown



**IU Campus Total**
**Fall 2016**

<i>Numerators</i>	UG, Degree Seeking			Graduate/Professional, Degree Seeking			Total, Degree Seeking		
	Count	% of Known, Domestic	% of Total	Count	% of Known, Domestic	% of Total	Count	% of Known, Domestic	% of Total
Hispanic/Latino	4,941	7.2%	6.7%	870	5.7%	4.5%	5,811	7.0%	6.3%
African American	5,109	7.5%	7.0%	1,203	7.9%	6.2%	6,312	7.6%	6.8%
Asian	2,684	3.9%	3.7%	1,128	7.4%	5.8%	3,812	4.6%	4.1%
American Indian	100	0.1%	0.1%	19	0.1%	0.1%	119	0.1%	0.1%
Pacific Islander	43	0.1%	0.1%	10	0.1%	0.1%	53	0.1%	0.1%
Two or More Races	2,719	4.0%	3.7%	391	2.6%	2.0%	3,110	3.7%	3.3%
Single Race Selections w/in Two or More Races									
African American	1,196			134			1,330		
Asian	1,111			187			1,298		
American Indian	627			95			722		
Pacific Islander	260			40			300		
White	2,505			357			2,862		
White	52,811	77.2%	71.9%	11,558	76.1%	59.4%	64,369	77.0%	69.3%
International <sup>1</sup>	4,614		6.3%	4,015		20.6%	8,629		9.3%
Unknown	429		0.6%	269		1.4%	698		0.8%
Students of Color <sup>2</sup>	15,596	22.8%	21.2%	3,621	23.9%	18.6%	19,217	23.0%	20.7%
Underrepresented Students of Color <sup>3</sup>	12,912	18.9%	17.6%	2,493	16.4%	12.8%	15,405	18.4%	16.6%
<i>Denominators</i>									
Known, Domestic Total <sup>4</sup>	68,407			15,179			83,586		
Total <sup>5</sup>	73,450			19,463			92,913		

<sup>1</sup> "International" - International student headcounts are based only on the student visa permit category of non-resident alien (i.e. excluding naturalized U.S. citizens and permanent residents). IA international student reporting is based on guidelines from the federal Integrated Postsecondary Education Data System (IPEDS).

<sup>2</sup> "Students of Color" - Hispanic, African American, Asian, American Indian

<sup>3</sup> "Underrepresented Students of Color" - All Students of Color less Asian

<sup>4</sup> "Known, Domestic Total" - All Students of Color plus White. Excludes International and unknown.

<sup>5</sup> "Total" - All degree seeking students including International and unknown

**IU Campus Total**
**Fall 2015**

	UG, Degree Seeking			Graduate/Professional, Degree Seeking			Total, Degree Seeking			
	<i>Numerators</i>	Count	% of Known, Domestic	% of Total	Count	% of Known, Domestic	% of Total	Count	% of Known, Domestic	% of Total
Hispanic/Latino			4,736			6.8%			6.4%	
African American	5,146	7.4%	6.9%	1,202	8.0%	6.3%	6,348	7.5%	6.8%	
Asian	2,501	3.6%	3.4%	1,074	7.1%	5.6%	3,575	4.2%	3.8%	
American Indian	115	0.2%	0.2%	25	0.2%	0.1%	140	0.2%	0.1%	
Pacific Islander	48	0.1%	0.1%	8	0.1%	0.0%	56	0.1%	0.1%	
Two or More Races	2,586	3.7%	3.5%	395	2.6%	2.1%	2,981	3.5%	3.2%	
Single Race Selections w/in Two or More Races										
African American	1,095			122			1,217			
Asian	1,061			205			1,266			
American Indian	641			90			731			
Pacific Islander	246			37			283			
White	2,374			361			2,735			
White	54,068	78.1%	72.7%	11,594	76.9%	60.5%	65,662	77.9%	70.2%	
International <sup>1</sup>	4,631		6.2%	3,772		19.7%	8,403		9.0%	
Unknown	540		0.7%	337		1.8%	877		0.9%	
Students of Color <sup>2</sup>	15,132	21.9%	20.3%	3,476	23.1%	18.1%	18,608	22.1%	19.9%	
Underrepresented Students of Color <sup>3</sup>	12,631	18.3%	17.0%	2,402	15.9%	12.5%	15,033	17.8%	16.1%	
<i>Denominators</i>										
Known, Domestic Total <sup>4</sup>	69,200			15,070			84,270			
Total <sup>5</sup>	74,371			19,179			93,550			

<sup>1</sup> "International" - International student headcounts are based only on the student visa permit category of non-resident alien (i.e. excluding naturalized U.S. citizens and permanent residents). IA international student reporting is based on guidelines from the federal Integrated Postsecondary Education Data System (IPEDS).

<sup>2</sup> "Students of Color" - Hispanic, African American, Asian, American Indian

<sup>3</sup> "Underrepresented Students of Color" - All Students of Color less Asian

<sup>4</sup> "Known, Domestic Total" - All Students of Color plus White. Excludes International and unknown.

<sup>5</sup> "Total" - All degree seeking students including International and unknown

**IU Campus Total**
**Fall 2014**

<i>Numerators</i>	UG, Degree Seeking			Graduate/Professional, Degree Seeking			Total, Degree Seeking		
	Count	% of Known, Domestic	% of Total	Count	% of Known, Domestic	% of Total	Count	% of Known, Domestic	% of Total
Hispanic/Latino	4,450	6.4%	5.9%	722	4.8%	3.8%	5,172	6.1%	5.5%
African American	5,340	7.6%	7.1%	1,164	7.7%	6.1%	6,504	7.6%	6.9%
Asian	2,430	3.5%	3.2%	984	6.5%	5.2%	3,414	4.0%	3.6%
American Indian	110	0.2%	0.1%	22	0.1%	0.1%	132	0.2%	0.1%
Pacific Islander	55	0.1%	0.1%	6	0.0%	0.0%	61	0.1%	0.1%
Two or More Races	2,385	3.4%	3.2%	369	2.4%	1.9%	2,754	3.2%	2.9%
Single Race Selections w/in Two or More Races									
African American	934			115			1,049		
Asian	1,005			179			1,184		
American Indian	613			89			702		
Pacific Islander	225			32			257		
White	2,202			343			2,545		
White	55,214	78.9%	73.4%	11,823	78.3%	61.9%	67,037	78.8%	71.1%
International <sup>1</sup>	4,546		6.0%	3,572		18.7%	8,118		8.6%
Unknown	667		0.9%	436		2.3%	1,103		1.2%
Students of Color <sup>2</sup>	14,770	21.1%	19.6%	3,267	21.7%	17.1%	18,037	21.2%	19.1%
Underrepresented Students of Color <sup>3</sup>	12,340	17.6%	16.4%	2,283	15.1%	12.0%	14,623	17.2%	15.5%
<i>Denominators</i>									
Known, Domestic Total <sup>4</sup>	69,984			15,090			85,074		
Total <sup>5</sup>	75,197			19,098			94,295		

<sup>1</sup> "International" - International student headcounts are based only on the student visa permit category of non-resident alien (i.e. excluding naturalized U.S. citizens and permanent residents). IA international student reporting is based on guidelines from the federal Integrated Postsecondary Education Data System (IPEDS).

<sup>2</sup> "Students of Color" - Hispanic, African American, Asian, American Indian

<sup>3</sup> "Underrepresented Students of Color" - All Students of Color less Asian

<sup>4</sup> "Known, Domestic Total" - All Students of Color plus White. Excludes International and unknown.

<sup>5</sup> "Total" - All degree seeking students including International and unknown

**IU Campus Total**
**Fall 2013**

<i>Numerators</i>	UG, Degree Seeking			Graduate/Professional, Degree Seeking			Total, Degree Seeking		
	Count	% of Known, Domestic	% of Total	Count	% of Known, Domestic	% of Total	Count	% of Known, Domestic	% of Total
Hispanic/Latino	4,139	5.9%	5.5%	657	4.4%	3.5%	4,796	5.6%	5.1%
African American	5,472	7.8%	7.3%	1,136	7.6%	6.0%	6,608	7.8%	7.0%
Asian	2,304	3.3%	3.1%	933	6.2%	4.9%	3,237	3.8%	3.4%
American Indian	117	0.2%	0.2%	34	0.2%	0.2%	151	0.2%	0.2%
Pacific Islander	69	0.1%	0.1%	11	0.1%	0.1%	80	0.1%	0.1%
Two or More Races	2,208	3.1%	2.9%	320	2.1%	1.7%	2,528	3.0%	2.7%
Single Race Selections w/in Two or More Races									
African American	867			100			967		
Asian	917			145			1,062		
American Indian	595			99			694		
Pacific Islander	207			20			227		
White	1,739			300			2,039		
White	55,885	79.6%	74.1%	11,884	79.4%	62.5%	67,769	79.6%	71.8%
International <sup>1</sup>	4,338		5.8%	3,614		19.0%	7,952		8.4%
Unknown	862		1.1%	430		2.3%	1,292		1.4%
Students of Color <sup>2</sup>	14,309	20.4%	19.0%	3,091	20.6%	16.3%	17,400	20.4%	18.4%
Underrepresented Students of Color <sup>3</sup>	12,005	17.1%	15.9%	2,158	14.4%	11.3%	14,163	16.6%	15.0%
<i>Denominators</i>									
Known, Domestic Total <sup>4</sup>	70,194			14,975			85,169		
Total <sup>5</sup>	75,394			19,019			94,413		

<sup>1</sup> "International" - International student headcounts are based only on the student visa permit category of non-resident alien (i.e. excluding naturalized U.S. citizens and permanent residents). IA international student reporting is based on guidelines from the federal Integrated Postsecondary Education Data System (IPEDS).

<sup>2</sup> "Students of Color" - Hispanic, African American, Asian, American Indian

<sup>3</sup> "Underrepresented Students of Color" - All Students of Color less Asian

<sup>4</sup> "Known, Domestic Total" - All Students of Color plus White. Excludes International and unknown.

<sup>5</sup> "Total" - All degree seeking students including International and unknown

**IU Campus Total**
**Fall 2012**

	UG, Degree Seeking			Graduate/Professional, Degree Seeking			Total, Degree Seeking		
		% of Known, Domestic	% of Total		% of Known, Domestic	% of Total		% of Known, Domestic	% of Total
<i>Numerators</i>	Count	Total	Total	Count	Total	Total	Count	Total	Total
Hispanic/Latino	3,788	5.4%	5.0%	621	4.1%	3.3%	4,409	5.1%	4.7%
African American	5,826	8.3%	7.7%	1,159	7.6%	6.1%	6,985	8.2%	7.4%
Asian	2,196	3.1%	2.9%	912	6.0%	4.8%	3,108	3.6%	3.3%
American Indian	129	0.2%	0.2%	35	0.2%	0.2%	164	0.2%	0.2%
Pacific Islander	56	0.1%	0.1%	9	0.1%	0.0%	65	0.1%	0.1%
Two or More Races	1,932	2.7%	2.6%	283	1.9%	1.5%	2,215	2.6%	2.3%
Single Race Selections w/in Two or More Races									
African American	769			96			865		
Asian	786			119			905		
American Indian	540			97			637		
Pacific Islander	146			24			170		
White	1,789			259			2,048		
White	56,452	80.2%	74.8%	12,217	80.2%	64.2%	68,669	80.2%	72.7%
International <sup>1</sup>	4,078		5.4%	3,218		16.9%	7,296		7.7%
Unknown	997		1.3%	575		3.0%	1,572		1.7%
Students of Color <sup>2</sup>	13,927	19.8%	18.5%	3,019	19.8%	15.9%	16,946	19.8%	17.9%
Underrepresented Students of Color <sup>3</sup>	11,731	16.7%	15.5%	2,107	13.8%	11.1%	13,838	16.2%	14.6%
<i>Denominators</i>									
Known, Domestic Total <sup>4</sup>	70,379			15,236			85,615		
Total <sup>5</sup>	75,454			19,029			94,483		

<sup>1</sup> "International" - International student headcounts are based only on the student visa permit category of non-resident alien (i.e. excluding naturalized U.S. citizens and permanent residents). IA international student reporting is based on guidelines from the federal Integrated Postsecondary Education Data System (IPEDS).

<sup>2</sup> "Students of Color" - Hispanic, African American, Asian, American Indian

<sup>3</sup> "Underrepresented Students of Color" - All Students of Color less Asian

<sup>4</sup> "Known, Domestic Total" - All Students of Color plus White. Excludes International and unknown.

<sup>5</sup> "Total" - All degree seeking students including International and unknown

**IU Campus Total**
**Fall 2011**

<i>Numerators</i>	UG, Degree Seeking			Graduate/Professional, Degree Seeking			Total, Degree Seeking		
	Count	% of Known, Domestic	% of Total	Count	% of Known, Domestic	% of Total	Count	% of Known, Domestic	% of Total
Hispanic/Latino	3,496	4.9%	4.6%	603	3.9%	3.1%	4,099	4.7%	4.3%
African American	5,842	8.2%	7.7%	1,183	7.6%	6.1%	7,025	8.1%	7.4%
Asian	2,166	3.0%	2.9%	932	6.0%	4.8%	3,098	3.6%	3.3%
American Indian	140	0.2%	0.2%	49	0.3%	0.3%	189	0.2%	0.2%
Pacific Islander	51	0.1%	0.1%	11	0.1%	0.1%	62	0.1%	0.1%
Two or More Races	1,509	2.1%	2.0%	247	1.6%	1.3%	1,756	2.0%	1.8%
Single Race Selections w/in Two or More Races									
African American	630			81			711		
Asian	535			103			638		
American Indian	464			86			550		
Pacific Islander	141			17			158		
White	1,383			228			1,611		
White	57,844	81.4%	76.3%	12,570	80.6%	64.6%	70,414	81.3%	73.9%
International <sup>1</sup>	3,609		4.8%	3,154		16.2%	6,763		7.1%
Unknown	1,148		1.5%	713		3.7%	1,861		2.0%
Students of Color <sup>2</sup>	13,204	18.6%	17.4%	3,025	19.4%	15.5%	16,229	18.7%	17.0%
Underrepresented Students of Color <sup>3</sup>	11,038	15.5%	14.6%	2,093	13.4%	10.8%	13,131	15.2%	13.8%
<i>Denominators</i>									
Known, Domestic Total <sup>4</sup>	71,048			15,595			86,643		
Total <sup>5</sup>	75,805			19,462			95,267		

<sup>1</sup> "International" - International student headcounts are based only on the student visa permit category of non-resident alien (i.e. excluding naturalized U.S. citizens and permanent residents). IA international student reporting is based on guidelines from the federal Integrated Postsecondary Education Data System (IPEDS).

<sup>2</sup> "Students of Color" - Hispanic, African American, Asian, American Indian

<sup>3</sup> "Underrepresented Students of Color" - All Students of Color less Asian

<sup>4</sup> "Known, Domestic Total" - All Students of Color plus White. Excludes International and unknown.

<sup>5</sup> "Total" - All degree seeking students including International and unknown

**IU Campus Total**
**Fall 2010**

<i>Numerators</i>	UG, Degree Seeking			Graduate/Professional, Degree Seeking			Total, Degree Seeking		
	Count	% of Known, Domestic	% of Total	Count	% of Known, Domestic	% of Total	Count	% of Known, Domestic	% of Total
Hispanic/Latino	3,234	4.6%	4.3%	575	3.7%	3.0%	3,809	4.4%	4.0%
African American	5,854	8.2%	7.7%	1,164	7.6%	6.0%	7,018	8.1%	7.4%
Asian	2,211	3.1%	2.9%	886	5.8%	4.6%	3,097	3.6%	3.3%
American Indian	174	0.2%	0.2%	62	0.4%	0.3%	236	0.3%	0.2%
Pacific Islander	53	0.1%	0.1%	11	0.1%	0.1%	64	0.1%	0.1%
Two or More Races	1,090	1.5%	1.4%	171	1.1%	0.9%	1,261	1.5%	1.3%
Single Race Selections w/in Two or More Races									
African American	463			52			515		
Asian	386			84			470		
American Indian	347			57			404		
Pacific Islander	97			13			110		
White	987			152			1,139		
White	58,420	82.2%	77.3%	12,517	81.4%	64.9%	70,937	82.1%	74.7%
International <sup>1</sup>	3,139		4.2%	2,923		15.2%	6,062		6.4%
Unknown	1,442		1.9%	977		5.1%	2,419		2.5%
Students of Color <sup>2</sup>	12,616	17.8%	16.7%	2,869	18.6%	14.9%	15,485	17.9%	16.3%
Underrepresented Students of Color <sup>3</sup>	10,405	14.6%	13.8%	1,983	12.9%	10.3%	12,388	14.3%	13.1%
<i>Denominators</i>									
Known, Domestic Total <sup>4</sup>	71,036			15,386			86,422		
Total <sup>5</sup>	75,617			19,286			94,903		

<sup>1</sup> "International" - International student headcounts are based only on the student visa permit category of non-resident alien (i.e. excluding naturalized U.S. citizens and permanent residents). IA international student reporting is based on guidelines from the federal Integrated Postsecondary Education Data System (IPEDS).

<sup>2</sup> "Students of Color" - Hispanic, African American, Asian, American Indian

<sup>3</sup> "Underrepresented Students of Color" - All Students of Color less Asian

<sup>4</sup> "Known, Domestic Total" - All Students of Color plus White. Excludes International and unknown.

<sup>5</sup> "Total" - All degree seeking students including International and unknown

**IU Campus Total**
**Fall 2009**

	UG, Degree Seeking			Graduate/Professional, Degree Seeking			Total, Degree Seeking			
		% of Known, Domestic	% of Total		% of Known, Domestic	% of Total		% of Known, Domestic	% of Total	
<i>Numerators</i>	Count			Count			Count			
Hispanic/Latino	2,533	3.6%	3.4%	470	3.3%	2.5%	3,003	3.6%	3.2%	
African American	5,659	8.2%	7.6%	1,151	8.0%	6.0%	6,810	8.1%	7.3%	
Asian	2,356	3.4%	3.2%	794	5.5%	4.2%	3,150	3.8%	3.4%	
American Indian	226	0.3%	0.3%	66	0.5%	0.3%	292	0.3%	0.3%	
White	58,630	84.5%	78.9%	11,961	82.8%	62.6%	70,591	84.2%	75.6%	
International <sup>1</sup>	2,706		3.6%	2,939		15.4%	5,645		6.0%	
Unknown	2,217		3.0%	1,715		9.0%	3,932		4.2%	
Students of Color <sup>2</sup>	10,774	15.5%	14.5%	2,481	17.2%	13.0%	13,255	15.8%	14.2%	
Underrepresented Students of Color <sup>3</sup>	8,418	12.1%	11.3%	1,687	11.7%	8.8%	10,105	12.1%	10.8%	
<i>Denominators</i>										
Known, Domestic Total <sup>4</sup>	69,404			14,442			83,846			
Total <sup>5</sup>	74,327			19,096			93,423			

<sup>1</sup> "International" - International student headcounts are based only on the student visa permit category of non-resident alien (i.e. excluding naturalized U.S. citizens and permanent residents). IA international student reporting is based on guidelines from the federal Integrated Postsecondary Education Data System (IPEDS).

<sup>2</sup> "Students of Color" - Hispanic, African American, Asian, American Indian

<sup>3</sup> "Underrepresented Students of Color" - All Students of Color less Asian

<sup>4</sup> "Known, Domestic Total" - All Students of Color plus White. Excludes International and unknown.

<sup>5</sup> "Total" - All degree seeking students including International and unknown



**IU Campus Total**
**Fall 2008**

	UG, Degree Seeking			Graduate/Professional, Degree Seeking			Total, Degree Seeking		
		% of Known, Domestic	% of Total		% of Known, Domestic	% of Total		% of Known, Domestic	% of Total
<i>Numerators</i>	Count	Total	Total	Count	Total	Total	Count	Total	Total
Hispanic/Latino	2,261	3.4%	3.2%	486	3.4%	2.6%	2,747	3.4%	3.1%
African American	5,227	7.8%	7.4%	1,012	7.1%	5.5%	6,239	7.7%	7.0%
Asian	2,169	3.2%	3.1%	739	5.2%	4.0%	2,908	3.6%	3.3%
American Indian	231	0.3%	0.3%	66	0.5%	0.4%	297	0.4%	0.3%
White	56,914	85.2%	80.2%	11,910	83.8%	64.6%	68,824	85.0%	77.0%
International <sup>1</sup>	2,336		3.3%	2,917		15.8%	5,253		5.9%
Unknown	1,825		2.6%	1,320		7.2%	3,145		3.5%
Students of Color <sup>2</sup>	9,888	14.8%	13.9%	2,303	16.2%	12.5%	12,191	15.0%	13.6%
Underrepresented Students of Color <sup>3</sup>	7,719	11.6%	10.9%	1,564	11.0%	8.5%	9,283	11.5%	10.4%
<i>Denominators</i>									
Known, Domestic Total <sup>4</sup>	66,802			14,213			81,015		
Total <sup>5</sup>	70,963			18,450			89,413		

<sup>1</sup> "International" - International student headcounts are based only on the student visa permit category of non-resident alien (i.e. excluding naturalized U.S. citizens and permanent residents). IA international student reporting is based on guidelines from the federal Integrated Postsecondary Education Data System (IPEDS).

<sup>2</sup> "Students of Color" - Hispanic, African American, Asian, American Indian

<sup>3</sup> "Underrepresented Students of Color" - All Students of Color less Asian

<sup>4</sup> "Known, Domestic Total" - All Students of Color plus White. Excludes International and unknown.

<sup>5</sup> "Total" - All degree seeking students including International and unknown

**IU Campus Total**
**Fall 2007**

	UG, Degree Seeking			Graduate/Professional, Degree Seeking			Total, Degree Seeking		
		% of Known, Domestic	% of Total		% of Known, Domestic	% of Total		% of Known, Domestic	% of Total
<i>Numerators</i>	Count	Total	Total	Count	Total	Total	Count	Total	Total
Hispanic/Latino	2,076	3.2%	3.0%	477	3.4%	2.7%	2,553	3.2%	2.9%
African American	5,071	7.7%	7.3%	1,042	7.4%	5.8%	6,113	7.7%	7.0%
Asian	1,903	2.9%	2.8%	715	5.1%	4.0%	2,618	3.3%	3.0%
American Indian	225	0.3%	0.3%	66	0.5%	0.4%	291	0.4%	0.3%
White	56,239	85.8%	81.4%	11,780	83.7%	65.7%	68,019	85.5%	78.2%
International <sup>1</sup>	1,959		2.8%	2,808		15.7%	4,767		5.5%
Unknown	1,608		2.3%	1,030		5.7%	2,638		3.0%
Students of Color <sup>2</sup>	9,275	14.2%	13.4%	2,300	16.3%	12.8%	11,575	14.5%	13.3%
Underrepresented Students of Color <sup>3</sup>	7,372	11.3%	10.7%	1,585	11.3%	8.8%	8,957	11.3%	10.3%
<i>Denominators</i>									
Known, Domestic Total <sup>4</sup>	65,514			14,080			79,594		
Total <sup>5</sup>	69,081			17,918			86,999		

<sup>1</sup> "International" - International student headcounts are based only on the student visa permit category of non-resident alien (i.e. excluding naturalized U.S. citizens and permanent residents). IA international student reporting is based on guidelines from the federal Integrated Postsecondary Education Data System (IPEDS).

<sup>2</sup> "Students of Color" - Hispanic, African American, Asian, American Indian

<sup>3</sup> "Underrepresented Students of Color" - All Students of Color less Asian

<sup>4</sup> "Known, Domestic Total" - All Students of Color plus White. Excludes International and unknown.

<sup>5</sup> "Total" - All degree seeking students including International and unknown

**IU Campus Total**

**Fall 2006**

	UG, Degree Seeking			Graduate/Professional, Degree Seeking			Total, Degree Seeking		
		% of Known, Domestic	% of Total		% of Known, Domestic	% of Total		% of Known, Domestic	% of Total
<i>Numerators</i>	Count	Total	Total	Count	Total	Total	Count	Total	Total
Hispanic/Latino	1,996	3.1%	2.9%	427	3.0%	2.4%	2,423	3.1%	2.8%
African American	5,061	7.7%	7.4%	981	7.0%	5.6%	6,042	7.6%	7.0%
Asian	1,801	2.8%	2.6%	659	4.7%	3.8%	2,460	3.1%	2.9%
American Indian	215	0.3%	0.3%	58	0.4%	0.3%	273	0.3%	0.3%
White	56,244	86.1%	82.0%	11,890	84.8%	68.1%	68,134	85.9%	79.2%
International <sup>1</sup>	1,704		2.5%	2,574		14.7%	4,278		5.0%
Unknown	1,600		2.3%	866		5.0%	2,466		2.9%
Students of Color <sup>2</sup>	9,073	13.9%	13.2%	2,125	15.2%	12.2%	11,198	14.1%	13.0%
Underrepresented Students of Color <sup>3</sup>	7,272	11.1%	10.6%	1,466	10.5%	8.4%	8,738	11.0%	10.2%
<i>Denominators</i>									
Known, Domestic Total <sup>4</sup>	65,317			14,015			79,332		
Total <sup>5</sup>	68,621			17,455			86,076		

<sup>1</sup> "International" - International student headcounts are based only on the student visa permit category of non-resident alien (i.e. excluding naturalized U.S. citizens and permanent residents). IA international student reporting is based on guidelines from the federal Integrated Postsecondary Education Data System (IPEDS).

<sup>2</sup> "Students of Color" - Hispanic, African American, Asian, American Indian

<sup>3</sup> "Underrepresented Students of Color" - All Students of Color less Asian

<sup>4</sup> "Known, Domestic Total" - All Students of Color plus White. Excludes International and unknown.

<sup>5</sup> "Total" - All degree seeking students including International and unknown

**IU Campus Total**
**Fall 2005**

<i>Numerators</i>	UG, Degree Seeking			Graduate/Professional, Degree Seeking			Total, Degree Seeking		
	Count	% of Known, Domestic Total	% of Total	Count	% of Known, Domestic Total	% of Total	Count	% of Known, Domestic Total	% of Total
Hispanic/Latino	1,850	2.8%	2.7%	422	3.0%	2.5%	2,272	2.8%	2.6%
African American	5,240	7.9%	7.6%	1,005	7.2%	5.9%	6,245	7.8%	7.2%
Asian	1,700	2.6%	2.5%	627	4.5%	3.7%	2,327	2.9%	2.7%
American Indian	209	0.3%	0.3%	52	0.4%	0.3%	261	0.3%	0.3%
White	56,973	86.4%	82.3%	11,800	84.9%	69.0%	68,773	86.1%	79.6%
International <sup>1</sup>	1,672		2.4%	2,453		14.3%	4,125		4.8%
Unknown	1,605		2.3%	754		4.4%	2,359		2.7%
Students of Color <sup>2</sup>	8,999	13.6%	13.0%	2,106	15.1%	12.3%	11,105	13.9%	12.9%
Underrepresented Students of Color <sup>3</sup>	7,299	11.1%	10.5%	1,479	10.6%	8.6%	8,778	11.0%	10.2%
<b><i>Denominators</i></b>									
Known, Domestic Total <sup>4</sup>	65,972			13,906			79,878		
Total <sup>5</sup>	69,249			17,113			86,362		

<sup>1</sup> "International" - International student headcounts are based only on the student visa permit category of non-resident alien (i.e. excluding naturalized U.S. citizens and permanent residents). IA international student reporting is based on guidelines from the federal Integrated Postsecondary Education Data System (IPEDS).

<sup>2</sup> "Students of Color" - Hispanic, African American, Asian, American Indian

<sup>3</sup> "Underrepresented Students of Color" - All Students of Color less Asian

<sup>4</sup> "Known, Domestic Total" - All Students of Color plus White. Excludes International and unknown.

<sup>5</sup> "Total" - All degree seeking students including International and unknown

	2010		2011		2012		2013	
	UG	Grad	UG	Grad	UG	Grad	UG	Grad
IU								
African American	463	52	630	81	769	96	867	100
Asian	386	84	535	103	786	119	917	145
American Indian	347	57	464	86	540	97	595	99
Pacific Islander	97	13	141	17	146	24	207	20
White	987	152	1383	228	1789	259	1739	300
<hr/>								
BL								
African American	185	29	225	32	277	40	318	44
Asian	212	57	285	58	376	55	486	74
American Indian	121	32	162	36	191	41	225	46
Pacific Islander	44	4	65	5	67	8	94	7
White	452	96	609	110	761	120	926	147
IUPUI								
African American	132	16	212	39	294	45	319	46
Asian	112	22	169	41	283	59	285	67
American Indian	120	19	169	40	193	49	199	43
Pacific Islander	35	8	54	12	57	16	71	12
White	278	44	427	103	612	126	341	132
EA								
African American	19	0	28	0	19	1	21	0
Asian	7	0	8	1	13	1	14	1
American Indian	6	1	9	2	16	1	20	0
Pacific Islander	1	0	2	0	1	0	4	0
White	27	1	39	3	45	1	56	1
KO								
African American	5	0	13	1	12	1	27	0
Asian	6	1	6	0	17	0	24	0
American Indian	8	0	23	1	24	2	24	1
Pacific Islander	1	0	4	0	4	0	4	0
White	17	1	39	0	50	1	69	1
NW								
African American	26	4	42	5	43	1	48	1
Asian	10	1	17	1	19	1	24	0
American Indian	20	3	25	3	25	1	39	0
Pacific Islander	2	0	2	0	4	0	14	0
White	32	3	58	4	63	1	79	1
SB								
African American	48	2	64	1	75	7	67	8
Asian	17	2	19	1	43	2	41	3

American Indian	35	0	36	1	54	1	50	4
Pacific Islander	7	1	7	0	8	0	11	1
White	93	3	110	3	143	8	146	12

SE

African American	48	1	46	3	49	1	67	1
Asian	22	1	31	1	35	1	43	0
American Indian	37	2	40	3	37	2	38	5
Pacific Islander	7	0	7	0	5	0	9	0
White	88	4	101	5	115	2	122	6