



**Official Graduation Rates Report
Student Information & Fiscal Services**

**1991 Full-Time Beginners
Vol. 6, No. 1**

This report summarizes the data submitted to IPEDS with the Graduation Rates Survey. The cohort is based upon degree-seeking students who matriculated in the summer or fall of 1991 and were full-time in the first semester. The campus specific "Institutional Graduation Rates Summary" sheets attached subdivide this cohort by degree-seeking status at time of entry (baccalaureate or other degree) and provide figures on the number and percentage of students receiving degrees within 150% of program length. The graduation rates illustrated on these sheets (A - E) represent the various ways that numbers can be used for comparison with other types of programs and institutions. The final graduation rate (E) aggregates all these subsets together into a figure that comports to previous rates and is used for external reporting.

Overall Graduation Rates by Campus and Cohort

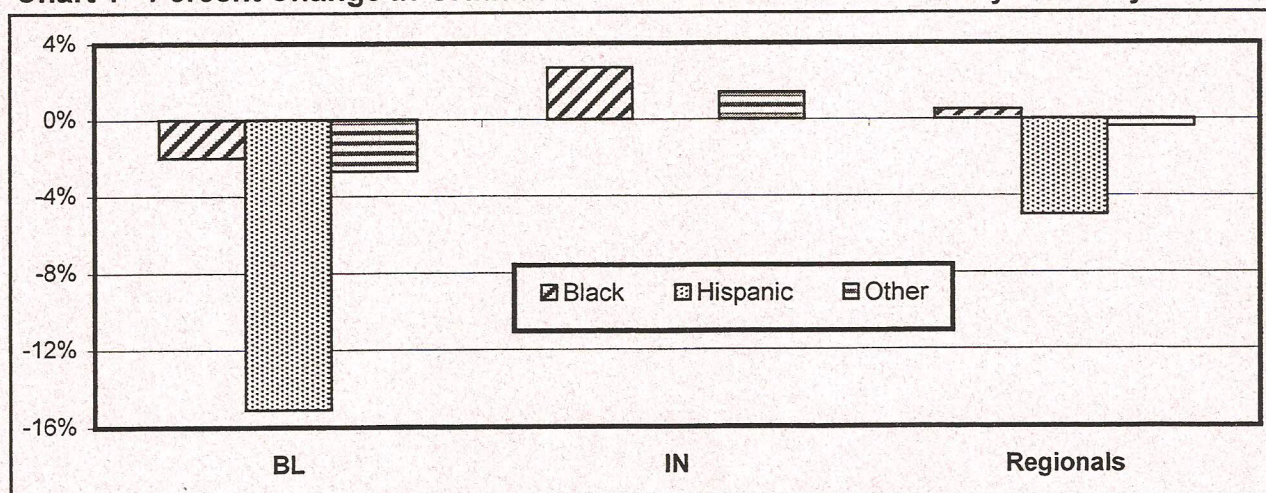
	1991			1990			% change
	Began*	Rec'd Deg.**	%	Began*	Rec'd Deg.**	%	
BL	5,208	3,478	66.8%	5,393	3,754	69.6%	-2.8%
IN	1,536	350	22.8%	1,441	310	21.5%	1.3%
EA	222	30	13.5%	192	43	22.4%	-8.9%
FW	595	132	22.2%	617	135	21.9%	0.3%
KO	315	61	19.4%	270	52	19.3%	0.1%
NW	614	158	25.7%	576	152	26.4%	-0.7%
SB	554	156	28.2%	507	132	26.0%	2.1%
SE	589	131	22.2%	620	147	23.7%	-1.5%
IU total	9,633	4,496	46.7%	9,616	4,725	49.1%	-2.5%

*full-time, first-time, degree-seeking undergraduates

**within 150% of program length

FW - IU students only

Chart 1 - Percent Change In Graduation Rates From 1990 to 1991 By Ethnicity

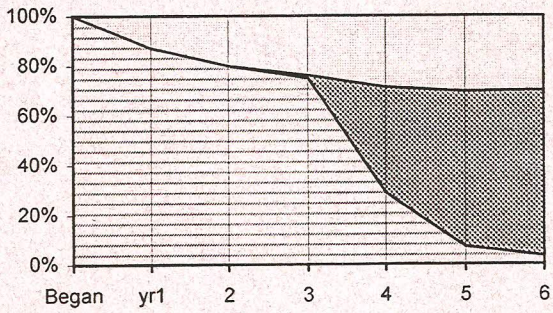


Number of Students In Initial Cohort (Chart 1)

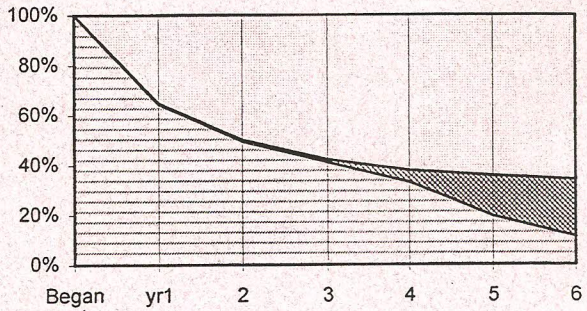
1991	Black	Hispanic	Other	1990	Black	Hispanic	Other
BL	282	80	4,846	BL	285	110	4,998
IN	154	16	1,366	IN	116	16	1,309
Regionals	181	72	2,636	Regionals	152	78	2,554
Total	617	168	8,848	Total	553	204	8,861

Enrollment, Degree Attainment, and Attrition Rates By Campus - 1991 Cohort

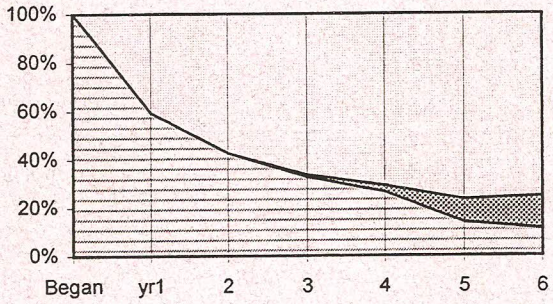
Bloomington



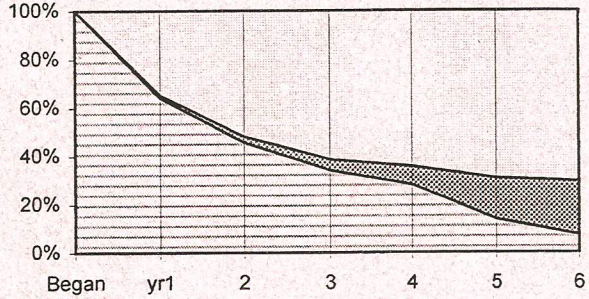
Indianapolis



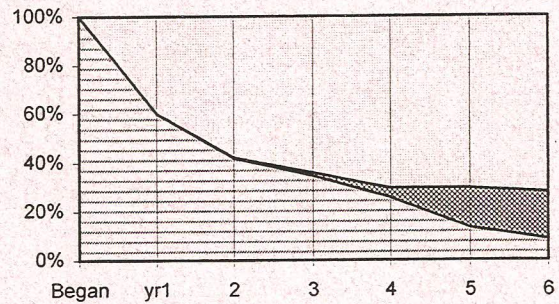
East



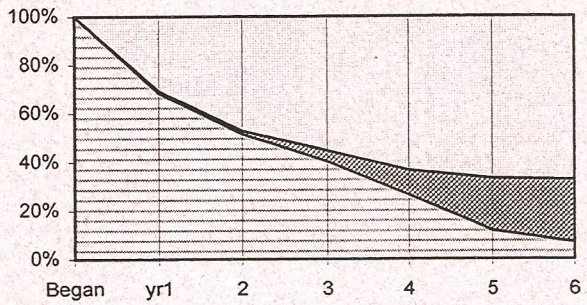
Fort Wayne*



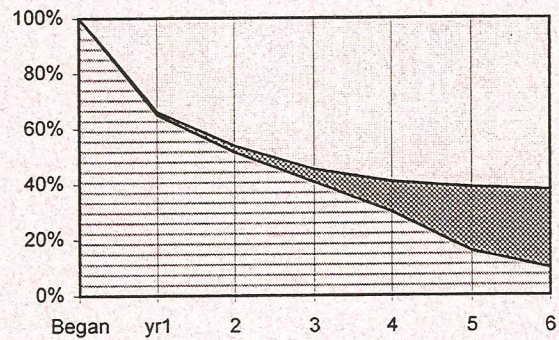
Kokomo



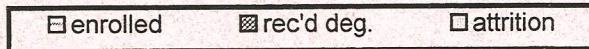
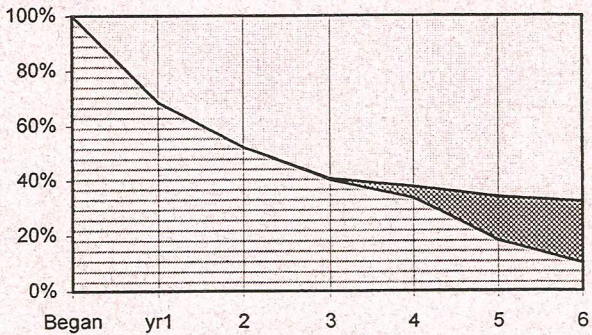
Northwest



South Bend



Southeast



* IU students only

Source Information

Todd Schmitz, Dir. Reporting & Research

Student Information and Fiscal Svcs., Poplars 603

(812) 855-9893

schmitz@indiana.edu

Bryne Roberts, Research Graduate Assistant

Student Information and Fiscal Svcs., Poplars 604

(812) 855-5443

bryrober@indiana.edu

Institutional Graduation Rates Summary-Bloomington

Cohort year: 1991		Nonresident alien		Black, non-Hispanic		American Indian or Alaskan Native		Asian or Pacific Islander		Hispanic		White, non-Hispanic		Race/ethnicity unknown		Total All Students	
		Men	Women	Men	Women	Men	Women	Men	Women	Men	Women	Men	Women	Men	Women	Men	Women
First-time, full-time bachelor's degree-seeking students		32	21	98	184	9	7	67	75	36	43	1,927	2,645	15	24	2,184	2,999
N C A A	Number receiving bachelor's degrees within 6 years	29	16	35	74	3	5	43	56	20	13	1,334	1,811	9	14	1,473	1,989
	Graduation rate	90.6%	76.2%	35.7%	40.2%	33.3%	71.4%	64.2%	74.7%	55.6%	30.2%	69.2%	68.5%	60.0%	58.3%	67.4%	66.3%
A																All	66.8%
Number receiving other degrees within 150% of program length		0	0	0	0	0	0	0	0	0	0	1	3	0	0	1	3
Adjusted graduation rate		90.6%	76.2%	35.7%	40.2%	33.3%	71.4%	64.2%	74.7%	55.6%	30.2%	69.3%	68.6%	60.0%	58.3%	67.5%	66.4%
B																All	66.9%
First-time, full-time other degree-seeking students		0	0	0	0	0	0	0	0	1	0	10	14	0	0	11	14
Number receiving other degree within 150% of program length		0	0	0	0	0	0	0	0	0	0	1	1	0	0	1	1
Graduation rate		#DIV/0!	#DIV/0!	#DIV/0!	#DIV/0!	#DIV/0!	#DIV/0!	#DIV/0!	#DIV/0!	0.0%	#DIV/0!	10.0%	7.1%	#DIV/0!	#DIV/0!	9.1%	7.1%
C																All	8.0%
Number receiving bachelor's degrees within 6 years		0	0	0	0	0	0	0	0	0	0	4	6	0	0	4	6
Adjusted graduation rate		#DIV/0!	#DIV/0!	#DIV/0!	#DIV/0!	#DIV/0!	#DIV/0!	#DIV/0!	#DIV/0!	0.0%	#DIV/0!	50.0%	50.0%	#DIV/0!	#DIV/0!	45.5%	50.0%
D																All	48.0%
Total number of students		32	21	98	184	9	7	67	75	37	43	1,937	2,659	15	24	2,195	3,013
Total number of students receiving degrees within 150% of program length		29	16	35	74	3	5	43	56	20	13	1,340	1,821	9	14	1,479	1,999
Total graduation rate		90.6%	76.2%	35.7%	40.2%	33.3%	71.4%	64.2%	74.7%	54.1%	30.2%	69.2%	68.5%	60.0%	58.3%	67.4%	66.3%
E																All	66.8%

Historical Comparison Full-Time Beginners	Total All Students	
	Men	Women
1990 Cohort	69.8%	69.5%
	All	69.6%
1989 Cohort	68.4%	68.0%
	All	68.2%

Institutional Graduation Rates Summary-IUPUI

Cohort year: 1991	Nonresident alien		Black, non-Hispanic		American Indian or Alaskan Native		Asian or Pacific Islander		Hispanic		White, non-Hispanic		Race/ethnicity unknown		Total All Students	
	Men	Women	Men	Women	Men	Women	Men	Women	Men	Women	Men	Women	Men	Women	Men	Women
First-time, full-time bachelor's degree-seeking students	9	6	51	101	2	3	15	16	7	9	567	694	0	0	651	829
Number receiving bachelor's degrees within 6 years	3	2	5	15	0	1	2	4	1	2	125	167	0	0	136	191
Graduation rate	33.3%	33.3%	9.8%	14.9%	0.0%	33.3%	13.3%	25.0%	14.3%	22.2%	22.0%	24.1%	#DIV/0!	#DIV/0!	20.9%	23.0%
A																
Number receiving other degrees within 150% of program length	0	0	0	0	0	0	0	0	0	0	4	5	0	0	4	5
Adjusted graduation rate	33.3%	33.3%	9.8%	14.9%	0.0%	33.3%	13.3%	25.0%	14.3%	22.2%	22.8%	24.8%	#DIV/0!	#DIV/0!	21.5%	23.6%
B																
First-time, full-time other degree-seeking students	0	1	0	2	0	0	1	0	0	0	22	30	0	0	23	33
Number receiving other degree within 150% of program length	0	0	0	0	0	0	0	0	0	0	2	6	0	0	2	6
Graduation rate	#DIV/0!	0.0%	#DIV/0!	0.0%	#DIV/0!	#DIV/0!	0.0%	#DIV/0!	#DIV/0!	#DIV/0!	9.1%	20.0%	#DIV/0!	#DIV/0!	8.7%	18.2%
C																
Number receiving bachelor's degrees within 6 years	0	0	0	0	0	0	0	0	0	0	3	3	0	0	3	3
Adjusted graduation rate	#DIV/0!	0.0%	#DIV/0!	0.0%	#DIV/0!	#DIV/0!	0.0%	#DIV/0!	#DIV/0!	#DIV/0!	22.7%	30.0%	#DIV/0!	#DIV/0!	21.7%	27.3%
D																
Total number of students	9	7	51	103	2	3	16	16	7	9	589	724	0	0	674	862
Total number of students receiving degrees within 150% of program length	3	2	5	15	0	1	2	4	1	2	134	181	0	0	145	205
Total graduation rate	33.3%	28.6%	9.8%	14.6%	0.0%	33.3%	12.5%	25.0%	14.3%	22.2%	22.8%	25.0%	#DIV/0!	#DIV/0!	21.5%	23.8%
E																

Historical Comparison	Total All Students	
	Men	Women
Full-Time Beginners		
1990 Cohort	20.8%	22.1%
	All	21.5%
1989 Cohort	24.7%	26.8%
	All	25.8%

Institutional Graduation Rates Summary-East

Cohort year: 1991	Nonresident alien		Black, non-Hispanic		American Indian or Alaskan Native		Asian or Pacific Islander		Hispanic		White, non-Hispanic		Race/ethnicity unknown		Total All Students	
	Men	Women	Men	Women	Men	Women	Men	Women	Men	Women	Men	Women	Men	Women	Men	Women
First-time, full-time bachelor's degree-seeking students	0	0	0	3	0	0	0	1	0	1	42	69	2	3	44	77
Number receiving bachelor's degrees within 6 years	0	0	0	0	0	0	0	0	0	0	5	12	0	0	5	12
Graduation rate	#DIV/0!	#DIV/0!	#DIV/0!	0.0%	#DIV/0!	#DIV/0!	#DIV/0!	0.0%	#DIV/0!	0.0%	11.9%	17.4%	0.0%	0.0%	11.4%	15.6%
A																
Number receiving other degrees within 150% of program length	0	0	0	0	0	0	0	0	0	0	0	2	0	0	0	2
Adjusted graduation rate	#DIV/0!	#DIV/0!	#DIV/0!	0.0%	#DIV/0!	#DIV/0!	#DIV/0!	0.0%	#DIV/0!	0.0%	11.9%	20.3%	0.0%	0.0%	11.4%	18.2%
B																
First-time, full-time other degree-seeking students	0	0	1	2	1	0	0	0	0	0	29	67	1	0	32	69
Number receiving other degree within 150% of program length	0	0	0	0	0	0	0	0	0	0	0	0	0	0	0	0
Graduation rate	#DIV/0!	#DIV/0!	0.0%	0.0%	0.0%	#DIV/0!	#DIV/0!	#DIV/0!	#DIV/0!	#DIV/0!	0.0%	0.0%	0.0%	#DIV/0!	0.0%	0.0%
C																
Number receiving bachelor's degrees within 6 years	0	0	0	0	0	0	0	0	0	0	2	9	0	0	2	9
Adjusted graduation rate	#DIV/0!	#DIV/0!	0.0%	0.0%	0.0%	#DIV/0!	#DIV/0!	#DIV/0!	#DIV/0!	#DIV/0!	6.9%	13.4%	0.0%	#DIV/0!	6.3%	13.0%
D																
Total number of students	0	0	1	5	1	0	0	1	0	1	71	136	3	3	76	146
Total number of students receiving degrees within 150% of program length	0	0	0	0	0	0	0	0	0	0	7	23	0	0	7	23
Total graduation rate	#DIV/0!	#DIV/0!	0.0%	0.0%	0.0%	#DIV/0!	#DIV/0!	0.0%	#DIV/0!	0.0%	9.9%	16.9%	0.0%	0.0%	9.2%	15.8%
E																

Historical Comparison	Total All Students	
	Men	Women
Full-Time Beginners		
1990 Cohort	13.4%	27.2%
	All	22.4%
1989 Cohort	12.0%	19.1%
	All	16.4%

Institutional Graduation Rates Summary-Kokomo

Cohort year: 1991	Nonresident alien		Black, non-Hispanic		American Indian or Alaskan Native		Asian or Pacific Islander		Hispanic		White, non-Hispanic		Race/ethnicity unknown		Total All Students	
	Men	Women	Men	Women	Men	Women	Men	Women	Men	Women	Men	Women	Men	Women	Men	Women
First-time, full-time bachelor's degree-seeking students	0	0	2	4	0	0	1	1	1	5	104	150	0	0	108	160
Number receiving bachelor's degrees within 6 years	0	0	0	0	0	0	0	1	0	0	17	37	0	0	17	38
Graduation rate	#DIV/0!	#DIV/0!	0.0%	0.0%	#DIV/0!	#DIV/0!	0.0%	100.0%	0.0%	0.0%	16.3%	24.7%	#DIV/0!	#DIV/0!	15.7%	23.8%
A															All	20.5%
Number receiving other degrees within 150% of program length	0	0	0	0	0	0	0	0	0	0	0	0	0	0	0	0
Adjusted graduation rate	#DIV/0!	#DIV/0!	0.0%	0.0%	#DIV/0!	#DIV/0!	0.0%	100.0%	0.0%	0.0%	16.3%	24.7%	#DIV/0!	#DIV/0!	15.7%	23.8%
B															All	20.5%
First-time, full-time other degree-seeking students	0	0	0	1	0	0	0	0	0	0	8	38	0	0	8	39
Number receiving other degree within 150% of program length	0	0	0	0	0	0	0	0	0	0	0	3	0	0	0	3
Graduation rate	#DIV/0!	#DIV/0!	#DIV/0!	0.0%	#DIV/0!	#DIV/0!	#DIV/0!	#DIV/0!	#DIV/0!	#DIV/0!	0.0%	7.9%	#DIV/0!	#DIV/0!	0.0%	7.7%
C															All	6.4%
Number receiving bachelor's degrees within 6 years	0	0	0	0	0	0	0	0	0	0	1	2	0	0	1	2
Adjusted graduation rate	#DIV/0!	#DIV/0!	#DIV/0!	0.0%	#DIV/0!	#DIV/0!	#DIV/0!	#DIV/0!	#DIV/0!	#DIV/0!	12.5%	13.2%	#DIV/0!	#DIV/0!	12.5%	12.8%
D															All	12.8%
Total number of students	0	0	2	5	0	0	1	1	1	5	112	188	0	0	116	199
Total number of students receiving degrees within 150% of program length	0	0	0	0	0	0	0	1	0	0	18	42	0	0	18	43
Total graduation rate	#DIV/0!	#DIV/0!	0.0%	0.0%	#DIV/0!	#DIV/0!	0.0%	100.0%	0.0%	0.0%	16.1%	22.3%	#DIV/0!	#DIV/0!	15.5%	21.6%
E															All	19.4%

Historical Comparison	Total All Students	
	Men	Women
Full-Time Beginners		
1990 Cohort	21.4%	18.3%
All		19.3%
1989 Cohort	20.5%	25.7%
All		24.0%

Institutional Graduation Rates Summary-Northwest

Cohort year: 1991	Nonresident alien		Black, non-Hispanic		American Indian or Alaskan Native		Asian or Pacific Islander		Hispanic		White, non-Hispanic		Race/ethnicity unknown		Total All Students	
	Men	Women	Men	Women	Men	Women	Men	Women	Men	Women	Men	Women	Men	Women	Men	Women
First-time, full-time bachelor's degree-seeking students	1	0	23	85	0	0	3	3	18	30	167	258	1	2	213	378
Number receiving bachelor's degrees within 6 years	0	0	2	8	0	0	1	1	5	6	42	63	0	0	50	78
Graduation rate	0.0%	#DIV/0!	8.7%	9.4%	#DIV/0!	#DIV/0!	33.3%	33.3%	27.8%	20.0%	25.1%	24.4%	0.0%	0.0%	23.5%	20.6%
A															All	21.7%
Number receiving other degrees within 150% of program length	0	0	1	2	0	0	0	0	0	1	2	13	0	0	3	16
Adjusted graduation rate	0.0%	#DIV/0!	13.0%	11.8%	#DIV/0!	#DIV/0!	33.3%	33.3%	27.8%	23.3%	26.3%	29.5%	0.0%	0.0%	24.9%	24.9%
B															All	24.9%
First-time, full-time other degree-seeking students	0	0	0	1	0	0	0	0	0	0	5	17	0	0	5	18
Number receiving other degree within 150% of program length	0	0	0	0	0	0	0	0	0	0	0	7	0	0	0	7
Graduation rate	#DIV/0!	#DIV/0!	#DIV/0!	0.0%	#DIV/0!	#DIV/0!	#DIV/0!	#DIV/0!	#DIV/0!	#DIV/0!	0.0%	41.2%	#DIV/0!	#DIV/0!	0.0%	38.9%
C															All	30.4%
Number receiving bachelor's degrees within 6 years	0	0	0	0	0	0	0	0	0	0	2	2	0	0	2	2
Adjusted graduation rate	#DIV/0!	#DIV/0!	#DIV/0!	0.0%	#DIV/0!	#DIV/0!	#DIV/0!	#DIV/0!	#DIV/0!	#DIV/0!	40.0%	52.9%	#DIV/0!	#DIV/0!	40.0%	50.0%
D															All	47.8%
Total number of students	1	0	23	86	0	0	3	3	18	30	172	275	1	2	218	396
Total number of students receiving degrees within 150% of program length	0	0	3	10	0	0	1	1	5	7	46	85	0	0	55	103
Total graduation rate	0.0%	#DIV/0!	13.0%	11.6%	#DIV/0!	#DIV/0!	33.3%	33.3%	27.8%	23.3%	26.7%	30.9%	0.0%	0.0%	25.2%	26.0%
E															All	25.7%

Historical Comparison		Total All Students	
Full-Time Beginners		Men	Women
1990 Cohort		29.3%	24.7%
All		All	26.4%
1989 Cohort		27.6%	33.8%
All		All	31.2%

Institutional Graduation Rates Summary-South Bend

Cohort year: 1991	Nonresident alien		Black, non-Hispanic		American Indian or Alaskan Native		Asian or Pacific Islander		Hispanic		White, non-Hispanic		Race/ethnicity unknown		Total All Students	
	Men	Women	Men	Women	Men	Women	Men	Women	Men	Women	Men	Women	Men	Women	Men	Women
First-time, full-time bachelor's degree-seeking students	6	9	8	21	0	2	6	10	3	6	175	279	1	0	199	327
Number receiving bachelor's degrees within 6 years	5	5	1	2	0	0	2	2	0	0	43	73	1	0	52	82
Graduation rate	83.3%	55.6%	12.5%	9.5%	#DIV/0!	0.0%	33.3%	20.0%	0.0%	0.0%	24.6%	26.2%	100.0%	#DIV/0!	26.1%	25.1%
A																
All																
Number receiving other degrees within 150% of program length	0	0	0	0	0	0	0	0	0	0	2	9	0	0	2	9
Adjusted graduation rate	83.3%	55.6%	12.5%	9.5%	#DIV/0!	0.0%	33.3%	20.0%	0.0%	0.0%	25.7%	29.4%	100.0%	#DIV/0!	27.1%	27.8%
B																
All																
First-time, full-time other degree-seeking students	0	1	0	0	0	0	0	0	0	0	3	24	0	0	3	25
Number receiving other degree within 150% of program length	0	1	0	0	0	0	0	0	0	0	1	9	0	0	1	10
Graduation rate	#DIV/0!	100.0%	#DIV/0!	#DIV/0!	#DIV/0!	#DIV/0!	#DIV/0!	#DIV/0!	#DIV/0!	#DIV/0!	33.3%	37.5%	#DIV/0!	#DIV/0!	33.3%	40.0%
C																
All																
Number receiving bachelor's degrees within 6 years	0	0	0	0	0	0	0	0	0	0	0	0	0	0	0	0
Adjusted graduation rate	#DIV/0!	100.0%	#DIV/0!	#DIV/0!	#DIV/0!	#DIV/0!	#DIV/0!	#DIV/0!	#DIV/0!	#DIV/0!	33.3%	37.5%	#DIV/0!	#DIV/0!	33.3%	40.0%
D																
All																
Total number of students	6	10	8	21	0	2	6	10	3	6	178	303	1	0	202	352
Total number of students receiving degrees within 150% of program length	5	6	1	2	0	0	2	2	0	0	46	91	1	0	55	101
Total graduation rate	83.3%	60.0%	12.5%	9.5%	#DIV/0!	0.0%	33.3%	20.0%	0.0%	0.0%	25.8%	30.0%	100.0%	#DIV/0!	27.2%	28.7%
E																
All																

Historical Comparison Full-Time Beginners	Total All Students	
	Men	Women
1990 Cohort	24.2%	27.5%
	All	26.0%
1989 Cohort	31.0%	31.7%
	All	31.4%

Institutional Graduation Rates Summary-Southeast

Cohort year: 1991	Nonresident alien		Black, non-Hispanic		American Indian or Alaskan Native		Asian or Pacific Islander		Hispanic		White, non-Hispanic		Race/ethnicity unknown		Total All Students		
	Men	Women	Men	Women	Men	Women	Men	Women	Men	Women	Men	Women	Men	Women	Men	Women	
First-time, full-time bachelor's degree-seeking students	0	0	5	6	1	0	3	0	1	0	235	334	0	0	245	340	
Number receiving bachelor's degrees within 6 years	0	0	0	0	0	0	1	0	1	0	44	82	0	0	46	82	
Graduation rate	#DIV/0!	#DIV/0!	0.0%	0.0%	0.0%	#DIV/0!	33.3%	#DIV/0!	100.0%	#DIV/0!	18.7%	24.6%	#DIV/0!	#DIV/0!	18.8%	24.1%	
A																All	21.9%
Number receiving other degrees within 150% of program length	0	0	0	0	0	0	0	0	0	0	1	0	0	0	1	0	
Adjusted graduation rate	#DIV/0!	#DIV/0!	0.0%	0.0%	0.0%	#DIV/0!	33.3%	#DIV/0!	100.0%	#DIV/0!	19.1%	24.6%	#DIV/0!	#DIV/0!	19.2%	24.1%	
B																All	22.1%
First-time, full-time other degree-seeking students	0	0	0	1	0	0	0	0	0	0	1	2	0	0	1	3	
Number receiving other degree within 150% of program length	0	0	0	0	0	0	0	0	0	0	1	0	0	0	1	0	
Graduation rate	#DIV/0!	#DIV/0!	#DIV/0!	0.0%	#DIV/0!	#DIV/0!	#DIV/0!	#DIV/0!	#DIV/0!	#DIV/0!	100.0%	0.0%	#DIV/0!	#DIV/0!	100.0%	0.0%	
C																All	25.0%
Number receiving bachelor's degrees within 6 years	0	0	0	0	0	0	0	0	0	0	0	1	0	0	0	1	
Adjusted graduation rate	#DIV/0!	#DIV/0!	#DIV/0!	0.0%	#DIV/0!	#DIV/0!	#DIV/0!	#DIV/0!	#DIV/0!	#DIV/0!	100.0%	50.0%	#DIV/0!	#DIV/0!	100.0%	33.3%	
D																All	50.0%
Total number of students	0	0	5	7	1	0	3	0	1	0	236	336	0	0	246	343	
Total number of students receiving degrees within 150% of program length	0	0	0	0	0	0	1	0	1	0	46	83	0	0	48	83	
Total graduation rate	#DIV/0!	#DIV/0!	0.0%	0.0%	0.0%	#DIV/0!	33.3%	#DIV/0!	100.0%	#DIV/0!	19.5%	24.7%	#DIV/0!	#DIV/0!	19.5%	24.2%	
E																All	22.2%

Historical Comparison Full-Time Beginners	Total All Students	
	Men	Women
1990 Cohort	17.7%	28.4%
	All	23.7%
1989 Cohort	21.9%	24.1%
	All	23.3%

Institutional Graduation Rates Summary-IPFW (IU students only)

Cohort year: 1991	Nonresident alien		Black, non-Hispanic		American Indian or Alaskan Native		Asian or Pacific Islander		Hispanic		White, non-Hispanic		Race/ethnicity unknown		Total All Students	
	Men	Women	Men	Women	Men	Women	Men	Women	Men	Women	Men	Women	Men	Women	Men	Women
First-time, full-time bachelor's degree-seeking students	1	1	5	9	0	0	0	1	2	3	227	283	1	0	236	297
Number receiving bachelor's degrees within 6 years	0	0	0	1	0	0	0	1	0	1	45	56	0	0	45	59
Graduation rate	0.0%	0.0%	0.0%	11.1%	#DIV/0!	#DIV/0!	#DIV/0!	100.0%	0.0%	33.3%	19.8%	19.8%	0.0%	#DIV/0!	19.1%	19.9%
A																
Number receiving other degrees within 150% of program length	0	0	0	0	0	0	0	0	0	0	1	1	0	0	1	1
Adjusted graduation rate	0.0%	0.0%	0.0%	11.1%	#DIV/0!	#DIV/0!	#DIV/0!	100.0%	0.0%	33.3%	20.3%	20.1%	0.0%	#DIV/0!	19.5%	20.2%
B																
First-time, full-time other degree-seeking students	0	1	1	3	0	0	0	0	1	1	13	42	0	0	15	47
Number receiving other degree within 150% of program length	0	1	0	3	0	0	0	0	0	0	2	14	0	0	2	18
Graduation rate	#DIV/0!	100.0%	0.0%	100.0%	#DIV/0!	#DIV/0!	#DIV/0!	#DIV/0!	0.0%	0.0%	15.4%	33.3%	#DIV/0!	#DIV/0!	13.3%	38.3%
C																
Number receiving bachelor's degrees within 6 years	0	0	0	0	0	0	0	0	0	0	2	4	0	0	2	4
Adjusted graduation rate	#DIV/0!	100.0%	0.0%	100.0%	#DIV/0!	#DIV/0!	#DIV/0!	#DIV/0!	0.0%	0.0%	30.8%	42.9%	#DIV/0!	#DIV/0!	26.7%	46.8%
D																
Total number of students	1	2	6	12	0	0	0	1	3	4	240	325	1	0	251	344
Total number of students receiving degrees within 150% of program length	0	1	0	4	0	0	0	1	0	1	50	75	0	0	50	82
Total graduation rate	0.0%	50.0%	0.0%	33.3%	#DIV/0!	#DIV/0!	#DIV/0!	100.0%	0.0%	25.0%	20.8%	23.1%	0.0%	#DIV/0!	19.9%	23.8%
E																

Historical Comparison Full-Time Beginners		Total All Students	
		Men	Women
1990 Cohort		17.6%	25.1%
		All	21.9%
1989 Cohort		21.8%	27.2%
		All	24.9%

Institutional Graduation Rates Summary-IU Total (sans IPFW)

Cohort year: 1991		Nonresident alien		Black, non-Hispanic		American Indian or Alaskan Native		Asian or Pacific Islander		Hispanic		White, non-Hispanic		Race/ethnicity unknown		Total All Students	
		Men	Women	Men	Women	Men	Women	Men	Women	Men	Women	Men	Women	Men	Women	Men	Women
First-time, full-time bachelor's degree-seeking students		48	36	187	404	12	12	95	106	66	94	3,217	4,429	19	29	3,644	5,110
N C A A	Number receiving bachelor's degrees within 6 years	37	23	43	99	3	6	49	64	27	21	1,610	2,245	10	14	1,779	2,472
	Graduation rate	77.1%	63.9%	23.0%	24.5%	25.0%	50.0%	51.6%	60.4%	40.9%	22.3%	50.0%	50.7%	52.6%	48.3%	48.8%	48.4%
A																All	48.6%
Number receiving other degrees within 150% of program length		0	0	1	2	0	0	0	0	0	1	10	32	0	0	11	35
Adjusted graduation rate		77.1%	63.9%	23.5%	25.0%	25.0%	50.0%	51.6%	60.4%	40.9%	23.4%	50.4%	51.4%	52.6%	48.3%	49.1%	49.1%
B																All	49.1%
First-time, full-time other degree-seeking students		0	2	1	7	1	0	1	0	1	0	78	192	1	0	83	201
Number receiving other degree within 150% of program length		0	1	0	0	0	0	0	0	0	0	5	26	0	0	5	27
Graduation rate		#DIV/0!	50.0%	0.0%	0.0%	0.0%	#DIV/0!	0.0%	#DIV/0!	0.0%	#DIV/0!	6.4%	13.5%	0.0%	#DIV/0!	6.0%	13.4%
C																All	11.3%
Number receiving bachelor's degrees within 6 years		0	0	0	0	0	0	0	0	0	0	12	23	0	0	12	23
Adjusted graduation rate		#DIV/0!	50.0%	0.0%	0.0%	0.0%	#DIV/0!	0.0%	#DIV/0!	0.0%	#DIV/0!	21.8%	25.5%	0.0%	#DIV/0!	20.5%	24.9%
D																All	23.6%
Total number of students		48	38	188	411	13	12	96	106	67	94	3,295	4,621	20	29	3,727	5,311
Total number of students receiving degrees within 150% of program length		37	24	44	101	3	6	49	64	27	22	1,637	2,326	10	14	1,807	2,557
Total graduation rate		77.1%	63.2%	23.4%	24.6%	23.1%	50.0%	51.0%	60.4%	40.3%	23.4%	49.7%	50.3%	50.0%	48.3%	48.5%	48.1%
E																All	48.3%

Historical Comparison	Total All Students	
	Men	Women
Full-Time Beginners		
1990 Cohort		
1989 Cohort		

Institutional Graduation Rates Summary-IU Total (including IPFW)

Cohort year: 1991		Nonresident alien		Black, non-Hispanic		American Indian or Alaskan Native		Asian or Pacific Islander		Hispanic		White, non-Hispanic		Race/ethnicity unknown		Total All Students	
		Men	Women	Men	Women	Men	Women	Men	Women	Men	Women	Men	Women	Men	Women	Men	Women
First-time, full-time bachelor's degree-seeking students		49	37	192	413	12	12	95	107	68	97	3,444	4,712	20	29	3,880	5,407
N C A A	Number receiving bachelor's degrees within 6 years	37	23	43	100	3	6	49	65	27	22	1,655	2,301	10	14	1,824	2,531
	Graduation rate	75.5%	62.2%	22.4%	24.2%	25.0%	50.0%	51.6%	60.7%	39.7%	22.7%	48.1%	48.8%	50.0%	48.3%	47.0%	46.8%
A																All	46.9%
Number receiving other degrees within 150% of program length		0	0	1	2	0	0	0	0	0	1	11	33	0	0	12	36
Adjusted graduation rate		75.5%	62.2%	22.9%	24.7%	25.0%	50.0%	51.6%	60.7%	39.7%	23.7%	48.4%	49.5%	50.0%	48.3%	47.3%	47.5%
B																All	47.4%
First-time, full-time other degree-seeking students		0	3	2	10	1	0	1	0	2	1	91	234	1	0	98	248
Number receiving other degree within 150% of program length		0	2	0	3	0	0	0	0	0	0	7	40	0	0	7	45
Graduation rate		#DIV/0!	66.7%	0.0%	30.0%	0.0%	#DIV/0!	0.0%	#DIV/0!	0.0%	0.0%	7.7%	17.1%	0.0%	#DIV/0!	7.1%	18.1%
C																All	15.0%
Number receiving bachelor's degrees within 6 years		0	0	0	0	0	0	0	0	0	0	14	27	0	0	14	27
Adjusted graduation rate		#DIV/0!	66.7%	0.0%	30.0%	0.0%	#DIV/0!	0.0%	#DIV/0!	0.0%	0.0%	23.1%	28.6%	0.0%	#DIV/0!	21.4%	29.0%
D																All	26.9%
Total number of students		49	40	194	423	13	12	96	107	70	98	3,535	4,946	21	29	3,978	5,655
Total number of students receiving degrees within 150% of program length		37	25	44	105	3	6	49	65	27	23	1,687	2,401	10	14	1,857	2,639
Total graduation rate		75.5%	62.5%	22.7%	24.8%	23.1%	50.0%	51.0%	60.7%	38.6%	23.5%	47.7%	48.5%	47.6%	48.3%	46.7%	46.7%
E																All	46.7%

Historical Comparison Full-Time Beginners	Total All Students	
	Men	Women
1990 Cohort	48.5%	49.6%
	All	49.1%
1989 Cohort	49.9%	50.7%
	All	50.4%