



This report focuses attention on persistence to the second semester and is meant to accompany the fall retention report (V. 3, No. 1) which depicts persistence to the second year. Retention through five semesters is provided below and with the campus profiles to illustrate the most critical period for attrition. *The appendix provides raw data and more detail for all available semesters for the cohorts.*

Traditionally, retention has been gauged on increments of one year or with "fall to fall" reports which conforms to the enrollment patterns of traditional students at residential campuses. This strategy is still prominent but falls short of describing retention within the diverse IU system. As this report suggests, seemingly equal proportions of students stop their academic careers after the first and second semesters. Additionally, IUPUI and the regional campuses recognize that a large segment of their students' educational commitment is based upon a semester by semester experience rather than a more traditional academic year. As such, this report may speak more to the experience and enrollment patterns of students at the non-residential, regional campuses.

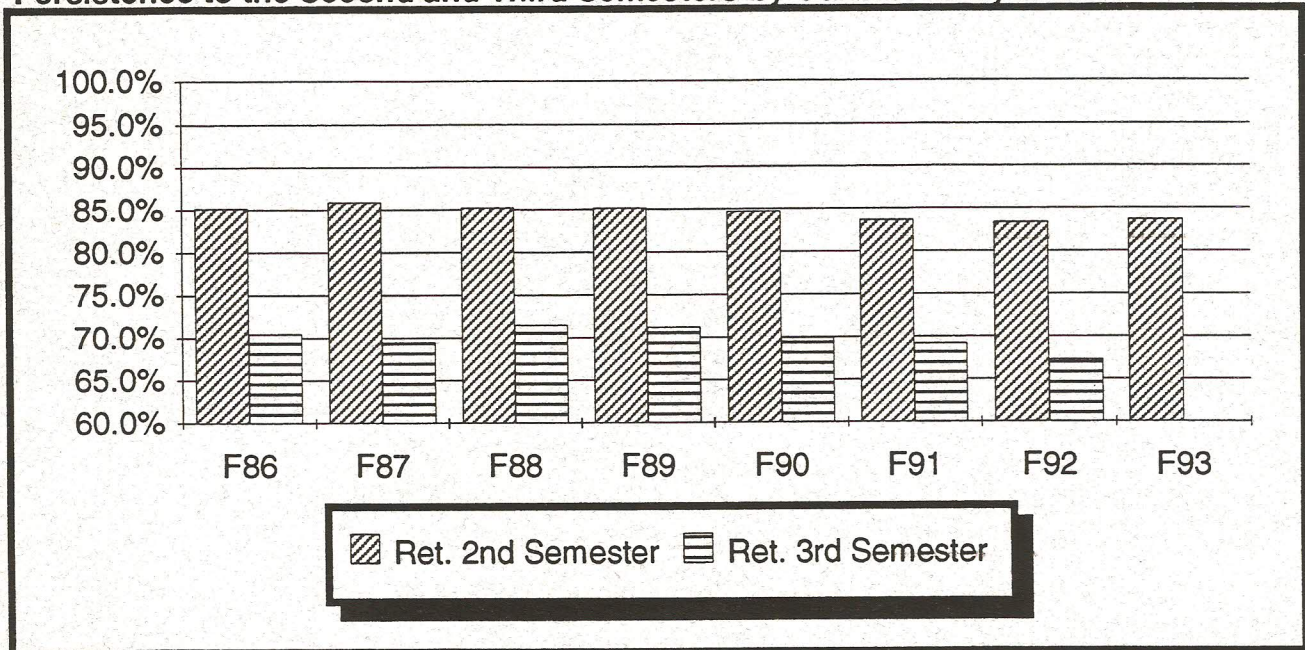
The Retention Tracking System (RTS) provides the source data. The RTS establishes student cohorts based upon their entry semester and tracks their academic careers through receipt of a degree. Retention is defined as re-enrollment or receipt of degree. Fall cohorts contains students who enter college for the first time in the fall or those students who start during the second summer session and re-enroll in the fall. The base campus is determined by the first fall enrollment and that campus is credited with those students throughout their academic careers regardless of intercampus transfers.

Your comments and suggestions are welcomed.

Semester by Semester Retention through Five Semesters - IU System

	F86	F87	F88	F89	F90	F91	F92	F93
Ret. 2nd	85.2%	86.0%	85.3%	85.2%	84.8%	83.7%	83.4%	83.7%
Ret. 3rd	70.5%	69.6%	71.6%	71.3%	70.0%	69.3%	67.4%	
Ret. 4th	65.8%	64.6%	66.9%	66.0%	64.9%	63.8%	61.9%	
Ret. 5th	60.7%	61.6%	61.4%	61.2%	60.0%	57.9%		

Persistence to the Second and Third Semesters by Cohort - IU System



Persistence to the Second Semester - IU System

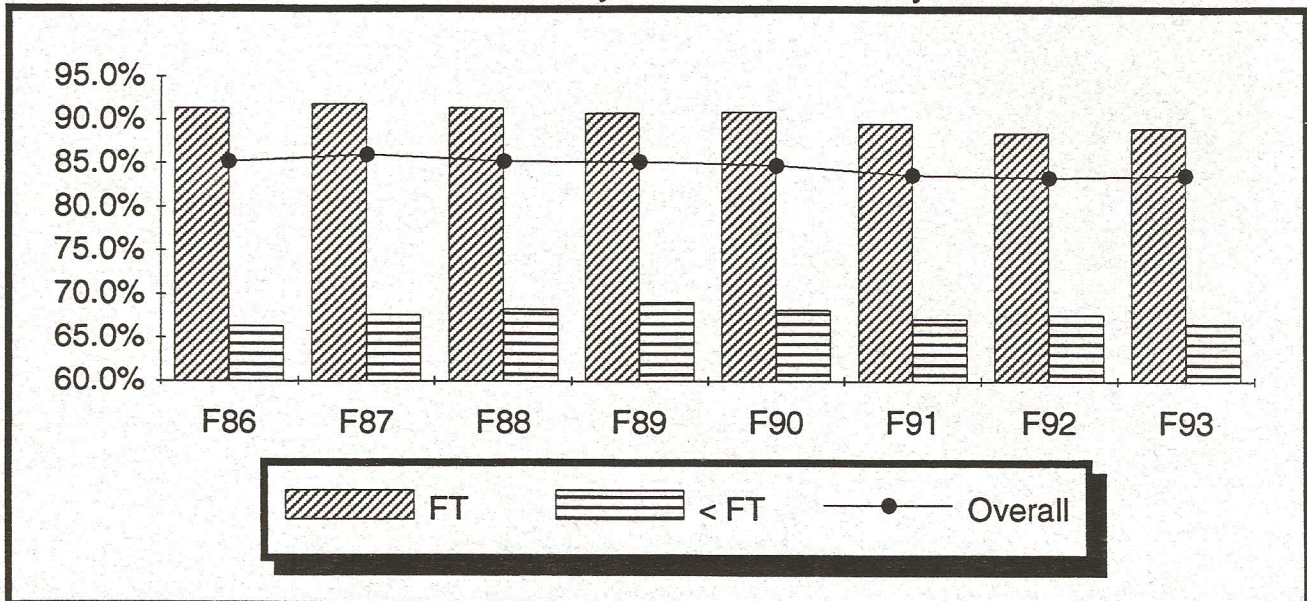
	F86	F87	F88	F89	F90	F91	F92	F93
Overall	85.2%	86.0%	85.3%	85.2%	84.8%	83.7%	83.4%	83.7%
By Entry Status								
Beg.	86.4%	87.1%	86.3%	86.2%	86.0%	84.9%	84.9%	85.1%
Trans.	80.6%	81.4%	80.3%	79.4%	80.0%	78.8%	77.9%	78.4%
FTB (1)	91.9%	92.4%	92.0%	91.3%	91.4%	90.0%	89.2%	89.7%
By Student Type								
Trad.	91.7%	92.5%	91.8%	91.1%	91.6%	90.1%	88.9%	89.3%
N. Maj. (2)	76.2%	76.7%	76.5%	76.5%	75.5%	74.7%	74.7%	72.7%
By Course Load in the First Fall Semester								
FT	91.4%	91.9%	91.5%	90.9%	91.0%	89.7%	88.6%	89.2%
< FT	66.4%	67.7%	68.4%	69.2%	68.3%	67.3%	67.8%	66.8%
By Ethnicity								
Am. Ind.	72.7%	85.7%	90.5%	81.3%	82.8%	82.5%	85.4%	84.1%
Asian	89.6%	96.2%	92.0%	93.4%	92.6%	90.7%	89.3%	90.7%
Black	79.8%	81.4%	81.1%	76.3%	77.1%	77.9%	75.4%	76.2%
Hispanic	84.1%	81.6%	81.3%	86.8%	87.5%	78.4%	80.6%	77.7%
Other	85.5%	86.2%	85.5%	85.6%	85.1%	84.1%	84.0%	84.3%

(1) FTB-Full-Time Beginner parallels the cohort definition for the Student Right to Know Act (SRKA)

(2) "New Majority" students are defined as freshman > 22, sophomores > 23, juniors >24, seniors > 25, or traditional age students who are attending less than full-time.

The graph below illustrates the relationship of course load on persistence to the second semester. Roughly a third of each fall cohort enroll as part-time students. These students choose to attend at a part-time level for a variety of reasons but, at the system level, they represent the largest "real" loss of students from first to second semester. Although full-time students are a clear two-thirds majority in each of the cohorts, the attrition for full-time students in the second semester is less than part-time students in real numbers. For example, of the 88,652 full-time students in the F86-F93 cohorts, 8,435 did not return for the second semester. Over 9,900 of the 30,815 part-time students did not persist to the second semester. Interestingly, from second to third semester this trend is reversed with the full-time cohorts suffering the larger proportional and real loss in students which reflects the influence and enrollment patterns of the large number of traditional students enrolled at IUB.

Persistence to the Second Semester by Course Load - IU System

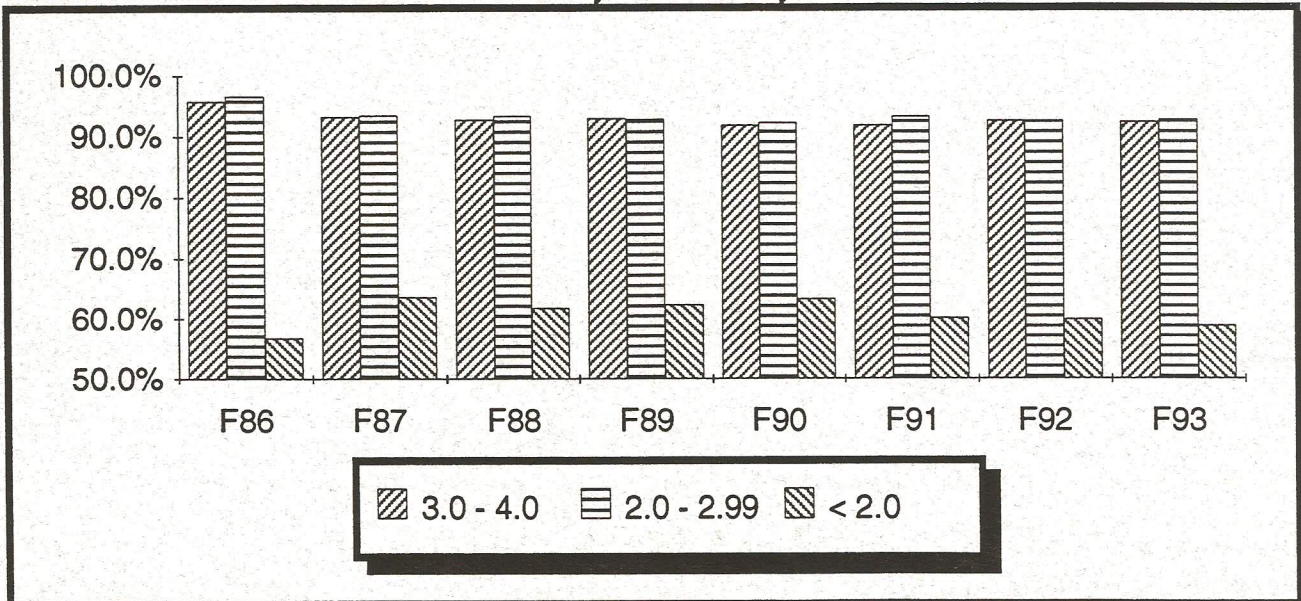


Persistence to the Second Semester - IU System (cont'd)

	F86	F87	F88	F89	F90	F91	F92	F93
Overall	85.2%	86.0%	85.3%	85.2%	84.8%	83.7%	83.4%	83.7%
By Age								
<25	87.2%	87.9%	87.2%	86.9%	86.6%	85.8%	85.1%	85.2%
25-29	73.0%	70.7%	74.0%	73.5%	73.5%	72.9%	72.2%	74.9%
30-39	72.7%	74.8%	75.7%	76.8%	76.2%	73.2%	77.8%	75.2%
>40	66.9%	75.8%	66.6%	66.6%	73.9%	69.7%	70.2%	73.3%
By Gender								
Male	85.0%	85.6%	85.2%	84.5%	84.4%	83.3%	82.8%	83.5%
Female	85.4%	86.2%	85.3%	85.7%	85.1%	84.0%	83.8%	83.9%
By GPA in the First Fall Semester								
3.0 - 4.0	95.9%	93.4%	92.9%	93.1%	91.9%	91.9%	92.7%	92.4%
2.0 - 2.99	96.7%	93.6%	93.5%	93.0%	92.3%	93.4%	92.6%	92.9%
< 2.0	56.9%	63.7%	61.9%	62.5%	63.4%	60.3%	60.1%	59.0%
By SAT Groups								
1400+	91.4%	97.9%	92.3%	94.4%	97.9%	94.1%	100.0%	100.0%
1200-1399	96.5%	95.2%	95.2%	94.8%	94.1%	95.4%	95.7%	95.5%
1000-1199	96.3%	94.2%	94.4%	92.6%	93.8%	92.7%	92.6%	92.9%
800-999	94.1%	89.9%	88.5%	88.6%	88.2%	88.2%	87.9%	88.1%
600-799	90.9%	84.4%	84.4%	82.1%	83.2%	81.8%	79.7%	80.5%
400-599	83.8%	78.3%	76.8%	80.0%	76.6%	73.2%	75.0%	73.5%
No SAT	63.2%	73.7%	73.6%	75.4%	75.2%	74.6%	74.8%	75.0%

Academic success has long been associated with retention. The graph below illustrates the first to second semester retention rates by GPA groups. Students achieving less than a 2.0 GPA in the first semester are much less likely to re-enroll in the second semester. Moderate academic success (2.0-2.99) seems to be equally indicative of second semester re-enrollment as the group achieving above a 3.0 GPA. The latter two GPA groups comprise roughly 75% of each cohort. A table on the following page combines GPA and course load to illustrate interaction of these two elements on persistence to the second semester.

Persistence to the Second Semester by GPA - IU System



Persistence to the Second Semester by GPA and Course Load - IU System

	F86	F87	F88	F89	F90	F91	F92	F93
3-4 GPA, FT	98.8%	97.8%	97.9%	97.9%	96.7%	97.1%	96.9%	97.3%
3-4 GPA, <FT	86.9%	80.6%	80.2%	80.3%	77.3%	79.4%	81.9%	80.5%
2-2.99 GPA, FT	98.4%	96.3%	96.2%	95.5%	95.4%	96.4%	95.3%	95.5%
2-2.99 GPA, <FT	87.5%	80.3%	80.9%	81.2%	77.3%	79.1%	79.2%	78.8%
< 2 GPA, FT	68.1%	73.8%	71.2%	70.4%	72.4%	68.0%	67.2%	67.0%
< 2 GPA, <FT	37.9%	44.9%	46.9%	49.3%	48.7%	46.3%	44.9%	42.3%

Persistence to the Second Semester by Campus

	F86	F87	F88	F89	F90	F91	F92	F93
IUB	94.2%	95.3%	95.5%	94.5%	95.5%	94.9%	94.1%	94.8%
IUPUI	78.9%	79.1%	79.4%	78.8%	79.3%	76.7%	77.0%	76.3%
IUE	67.0%	67.9%	74.5%	73.2%	74.8%	76.5%	75.5%	73.9%
IPFW	77.8%	76.8%	77.9%	77.5%	74.7%	74.4%	72.2%	78.9%
IUK	74.6%	79.8%	77.9%	76.6%	75.4%	77.8%	75.7%	74.6%
IUN	78.1%	78.4%	78.0%	79.6%	78.1%	77.9%	78.9%	78.4%
IUSB	72.6%	76.3%	78.6%	78.9%	77.3%	75.3%	75.6%	73.1%
IUS	76.9%	77.8%	76.1%	80.8%	80.1%	80.0%	79.0%	77.6%

IPFW - I.U. Students only

The following pages provide campus specific profiles. Please note that the SAT groupings are collapsed to insure adequate representation within the cells. Similarly, the "***" designation means that fewer than 10 students were contained in that cell which distorts the use of percentages.

Source Information

University Office of Enrollment Services Poplars, Suite 612 (812) 855-9624

Sara N. McNabb, Assistant Vice President
 Todd Schmitz, Dir., Reporting & Research Svcs.
 Lisa Newlin, Research Assistant

Date Produced: 6/20/94

Bloomington

Semester by Semester Retention through Five Semesters

	F86	F87	F88	F89	F90	F91	F92	F93
Ret. 2nd	94.2%	95.3%	95.5%	94.5%	95.5%	94.9%	94.1%	94.8%
Ret. 3rd	84.5%	84.1%	87.5%	87.8%	87.0%	86.4%	85.8%	
Ret. 4th	81.2%	81.4%	85.5%	84.8%	84.6%	82.9%	82.1%	
Ret. 5th	76.7%	79.6%	81.0%	80.8%	80.4%	79.2%		

Persistence to the Second Semester

By Entry Status								
Beg.	94.8%	95.7%	96.2%	94.9%	96.1%	95.4%	94.5%	95.3%
Trans.	91.2%	92.9%	89.0%	91.7%	90.9%	91.4%	90.7%	90.6%
FTB (1)	94.9%	95.9%	96.4%	95.1%	96.3%	95.5%	94.6%	95.4%
By Student Type								
Trad.	94.7%	95.7%	96.1%	95.2%	96.1%	95.5%	94.4%	95.1%
N. Maj. (2)	90.0%	91.2%	88.7%	85.7%	88.2%	84.1%	87.7%	84.5%
By Course Load in the First Fall Semester								
FT	94.5%	95.6%	95.8%	94.8%	95.8%	95.2%	94.2%	95.0%
< FT	75.3%	73.8%	73.4%	74.5%	77.3%	75.3%	81.9%	72.6%
By Ethnicity								
Black	87.9%	92.0%	91.0%	84.3%	85.5%	86.9%	80.8%	82.1%
Hispanic	91.5%	93.3%	96.5%	91.0%	90.3%	85.6%	88.3%	87.7%
Other	94.6%	95.5%	95.8%	95.2%	96.2%	95.5%	95.0%	95.6%
By Age								
<25	94.4%	95.5%	95.8%	94.7%	95.7%	95.2%	94.2%	94.9%
25-29	78.6%	81.4%	73.7%	86.7%	87.8%	86.1%	85.4%	86.3%
30-39	85.4%	83.3%	80.0%	75.9%	84.2%	72.7%	91.9%	86.1%
>40	81.8%	72.7%	**	63.6%	**	63.6%	100.0%	**
By Gender								
Male	93.9%	95.0%	96.1%	94.3%	96.0%	95.3%	94.5%	95.2%
Female	94.5%	95.5%	95.1%	94.6%	95.2%	94.6%	93.8%	94.4%
By GPA in the First Fall Semester								
3.0 - 4.0	99.2%	98.4%	98.2%	98.3%	97.7%	97.9%	97.9%	98.4%
2.0 - 2.99	98.9%	97.9%	97.6%	97.6%	97.7%	97.4%	96.8%	97.2%
< 2.0	72.7%	80.2%	78.7%	73.6%	81.6%	79.9%	77.8%	79.3%
By SAT Groups								
1200+	97.6%	97.5%	97.4%	96.1%	97.0%	97.6%	98.2%	97.4%
800-1199	97.2%	95.7%	96.6%	95.6%	96.4%	96.3%	95.5%	96.1%
400-799	94.0%	93.6%	93.8%	89.6%	92.0%	91.9%	88.5%	90.2%
No SAT	75.1%	91.8%	86.4%	88.5%	91.2%	87.8%	88.4%	89.8%

** Cell contains less than 10 students

(1) FTB-Full-Time Beginner parallels the cohort definition for the SRKA

(2) "New Majority" students are defined as freshman > 22, sophomores > 23, juniors >24, seniors > 25, or traditional age students who are attending less than full-time.

Indianapolis

Semester by Semester Retention through Five Semesters

	F86	F87	F88	F89	F90	F91	F92	F93
Ret. 2nd	78.9%	79.1%	79.4%	78.8%	79.3%	76.7%	77.0%	76.3%
Ret. 3rd	60.1%	60.0%	62.8%	61.8%	60.7%	59.7%	56.0%	
Ret. 4th	53.4%	53.0%	55.9%	53.6%	53.0%	53.6%	49.1%	
Ret. 5th	46.4%	47.7%	48.9%	47.7%	47.8%	46.5%		

Persistence to the Second Semester

By Entry Status								
Beg.	79.3%	80.1%	79.8%	79.2%	79.5%	76.6%	76.7%	76.4%
Trans.	77.8%	76.2%	78.4%	76.6%	78.8%	76.8%	77.7%	76.3%
FTB (1)	86.8%	88.0%	85.4%	84.6%	86.0%	80.7%	81.3%	81.2%
By Student Type								
Trad.	85.1%	85.4%	83.9%	82.1%	85.1%	80.0%	79.7%	80.4%
N. Maj. (2)	76.5%	76.3%	77.3%	77.1%	76.4%	74.8%	75.3%	73.0%
By Course Load in the First Fall Semester								
FT	86.8%	87.3%	85.6%	84.7%	86.3%	82.2%	82.2%	81.9%
< FT	71.2%	71.4%	73.2%	72.6%	71.8%	70.0%	70.0%	69.1%
By Ethnicity								
Black	77.6%	72.5%	75.3%	68.9%	75.2%	75.4%	71.4%	71.9%
Hispanic	76.5%	68.0%	78.6%	80.0%	83.3%	79.5%	66.7%	67.4%
Other	79.0%	79.9%	79.8%	79.7%	79.7%	76.8%	77.7%	76.8%
By Age								
<25	80.0%	80.1%	80.0%	79.2%	79.8%	77.1%	76.9%	76.2%
25-29	74.1%	74.5%	76.4%	74.1%	76.0%	73.5%	75.4%	76.3%
30-39	76.0%	74.8%	79.4%	79.0%	77.2%	77.0%	80.4%	77.7%
>40	73.5%	82.1%	71.8%	80.5%	84.3%	74.5%	76.0%	75.2%
By Gender								
Male	79.5%	78.2%	77.5%	76.3%	77.2%	74.7%	75.4%	74.9%
Female	78.4%	79.9%	80.9%	80.7%	80.9%	78.1%	78.2%	77.4%
By GPA in the First Fall Semester								
3.0 - 4.0	93.9%	88.2%	90.3%	91.3%	89.2%	90.5%	90.1%	88.0%
2.0 - 2.99	93.8%	89.7%	89.5%	89.5%	89.1%	91.0%	90.7%	89.7%
< 2.0	52.7%	58.8%	57.3%	57.8%	61.2%	54.0%	55.6%	51.2%
By SAT Groups								
1200+	89.8%	81.6%	83.6%	82.1%	69.8%	77.5%	68.6%	85.7%
800-1199	89.9%	82.9%	81.4%	81.0%	81.1%	79.2%	83.0%	80.8%
400-799	86.4%	79.0%	81.6%	79.1%	80.7%	76.3%	74.2%	74.9%
No SAT	60.9%	74.0%	73.5%	75.0%	76.2%	74.3%	73.6%	72.9%

** Cell contains less than 10 students

(1) FTB-Full-Time Beginner parallels the cohort definition for the SRKA

(2) "New Majority" students are defined as freshman > 22, sophomores > 23, juniors >24, seniors > 25, or traditional age students who are attending less than full-time.

East

Semester by Semester Retention through Five Semesters

	F86	F87	F88	F89	F90	F91	F92	F93
Ret. 2nd	67.0%	67.9%	74.5%	73.2%	74.8%	76.5%	75.5%	73.9%
Ret. 3rd	47.6%	44.9%	52.2%	52.1%	55.1%	53.4%	52.0%	
Ret. 4th	42.1%	39.9%	46.3%	43.4%	47.9%	45.8%	45.4%	
Ret. 5th	39.8%	36.3%	40.0%	39.3%	46.2%	39.7%		

Persistence to the Second Semester

By Entry Status								
Beg.	64.3%	68.4%	73.6%	73.2%	75.6%	77.2%	76.3%	72.2%
Trans.	78.3%	66.2%	83.3%	73.7%	70.0%	73.3%	71.7%	83.5%
FTB (1)	81.3%	82.3%	83.0%	86.3%	85.9%	84.2%	83.3%	81.3%
By Student Type								
Trad.	76.6%	74.1%	81.7%	81.7%	79.5%	81.3%	79.5%	78.1%
N. Maj. (2)	64.5%	66.7%	72.4%	70.4%	73.5%	75.1%	73.4%	71.6%
By Course Load in the First Fall Semester								
FT	81.7%	81.5%	83.9%	86.8%	85.7%	85.2%	83.2%	82.6%
< FT	56.2%	59.9%	66.7%	62.2%	67.1%	66.9%	65.9%	63.7%
By Ethnicity								
Black	**	**	58.3%	57.1%	76.9%	72.2%	81.0%	76.5%
Hispanic	**	**	**	**	**	**	**	**
Other	67.3%	68.0%	74.9%	73.5%	74.6%	76.6%	75.2%	74.2%
By Age								
<25	66.7%	67.1%	71.8%	74.2%	73.6%	78.8%	75.0%	73.8%
25-29	65.2%	56.8%	68.2%	75.0%	77.6%	68.4%	80.8%	79.2%
30-39	70.2%	77.6%	84.5%	73.9%	77.1%	73.4%	79.7%	75.7%
>40	63.2%	63.6%	77.8%	57.6%	74.3%	76.7%	66.7%	62.1%
By Gender								
Male	65.5%	66.4%	73.5%	68.5%	67.2%	73.3%	74.9%	73.2%
Female	67.9%	68.8%	74.9%	75.7%	78.4%	78.0%	75.8%	74.4%
By GPA in the First Fall Semester								
3.0 - 4.0	79.6%	78.3%	81.9%	80.0%	82.8%	85.6%	88.7%	88.9%
2.0 - 2.99	91.0%	74.0%	91.5%	86.2%	85.4%	92.0%	85.2%	87.1%
< 2.0	36.2%	50.5%	55.4%	58.2%	59.1%	59.3%	57.1%	52.4%
By SAT Groups								
1200+	**	**	**	**	**	**	**	**
800-1199	91.4%	76.8%	87.1%	79.4%	85.7%	85.7%	82.3%	78.2%
400-799	84.7%	76.7%	67.9%	80.4%	78.0%	80.6%	75.4%	75.6%
No SAT	53.9%	62.3%	73.7%	68.2%	70.8%	72.7%	72.7%	71.1%

** Cell contains less than 10 students

(1) FTB-Full-Time Beginner parallels the cohort definition for the SRKA

(2) "New Majority" students are defined as freshman > 22, sophomores > 23, juniors >24, seniors > 25, or traditional age students who are attending less than full-time.

Fort Wayne

Semester by Semester Retention through Five Semesters

	F86	F87	F88	F89	F90	F91	F92	F93
Ret. 2nd	77.8%	76.8%	77.9%	77.5%	74.7%	74.4%	72.2%	78.9%
Ret. 3rd	58.8%	56.2%	61.6%	59.8%	57.4%	59.3%	55.3%	
Ret. 4th	54.2%	51.1%	54.8%	53.2%	49.7%	50.7%	49.5%	
Ret. 5th	50.3%	46.8%	48.5%	47.9%	44.2%	43.3%		

Persistence to the Second Semester

By Entry Status								
Beg.	80.3%	78.7%	80.6%	80.0%	76.1%	75.7%	72.6%	80.3%
Trans.	72.5%	72.6%	72.1%	72.4%	72.3%	71.4%	71.2%	75.3%
FTB (1)	84.6%	85.0%	87.0%	85.6%	82.6%	81.4%	75.7%	84.9%
By Student Type								
Trad.	80.3%	84.4%	84.6%	81.7%	81.7%	80.1%	75.5%	82.8%
N. Maj. (2)	76.4%	72.5%	73.1%	74.6%	70.1%	70.2%	69.6%	74.5%
By Course Load in the First Fall Semester								
FT	84.1%	85.2%	87.2%	84.3%	83.2%	82.4%	76.9%	85.0%
< FT	65.7%	62.3%	60.8%	65.7%	60.3%	60.1%	63.3%	67.3%
By Ethnicity								
Black	73.7%	77.8%	55.0%	64.7%	69.2%	62.9%	72.0%	83.8%
Hispanic	**	57.1%	**	90.0%	**	81.8%	63.6%	93.8%
Other	78.1%	77.1%	78.3%	77.5%	74.8%	74.7%	72.3%	78.5%
By Age								
<25	79.5%	80.5%	80.2%	79.8%	76.6%	76.8%	72.2%	79.3%
25-29	68.5%	59.1%	72.1%	69.4%	66.7%	68.1%	69.8%	74.7%
30-39	75.3%	65.8%	69.9%	73.8%	73.3%	63.9%	70.8%	77.7%
>40	69.6%	70.4%	50.0%	63.0%	60.0%	62.2%	81.8%	82.2%
By Gender								
Male	78.0%	76.8%	76.6%	77.9%	75.2%	73.7%	69.4%	74.3%
Female	77.8%	76.9%	78.7%	77.2%	74.4%	74.9%	74.0%	81.8%
By GPA in the First Fall Semester								
3.0 - 4.0	95.0%	86.0%	85.8%	86.9%	84.7%	83.2%	88.0%	86.8%
2.0 - 2.99	94.7%	86.8%	88.3%	84.7%	84.4%	90.0%	84.5%	90.4%
< 2.0	45.2%	55.6%	55.8%	57.3%	48.4%	48.6%	42.2%	57.4%
By SAT Groups								
1200+	83.3%	71.4%	76.9%	85.7%	73.3%	73.3%	90.5%	66.7%
800-1199	93.9%	84.8%	84.3%	82.9%	80.1%	80.0%	75.5%	82.2%
400-799	91.3%	80.2%	79.7%	79.8%	75.5%	76.6%	67.6%	76.9%
No SAT	55.8%	66.1%	68.5%	69.5%	65.9%	64.0%	70.2%	76.5%

** Cell contains less than 10 students

Fort Wayne - I.U. Students only.

(1) FTB-Full-Time Beginner parallels the cohort definition for the SRKA

(2) "New Majority" students are defined as freshman > 22, sophomores > 23, juniors >24, seniors > 25, or traditional age students who are attending less than full-time.

Kokomo

Semester by Semester Retention through Five Semesters

	F86	F87	F88	F89	F90	F91	F92	F93
Ret. 2nd	74.6%	79.8%	77.9%	76.6%	75.4%	77.8%	75.7%	74.6%
Ret. 3rd	57.5%	57.8%	56.4%	55.3%	52.6%	53.2%	50.7%	
Ret. 4th	49.5%	45.6%	49.7%	48.5%	48.5%	48.1%	43.4%	
Ret. 5th	43.6%	40.5%	40.5%	43.0%	39.1%	34.7%		

Persistence to the Second Semester

By Entry Status								
Beg.	76.6%	81.5%	78.1%	78.5%	78.8%	80.0%	79.2%	76.6%
Trans.	66.2%	69.2%	76.6%	67.7%	63.3%	68.5%	62.6%	64.7%
FTB (1)	86.3%	90.3%	85.5%	86.5%	87.1%	88.6%	86.8%	84.2%
By Student Type								
Trad.	78.9%	90.4%	79.8%	85.4%	81.5%	84.6%	80.2%	79.3%
N. Maj. (2)	73.6%	77.6%	77.4%	73.8%	73.5%	75.5%	74.3%	71.8%
By Course Load in the First Fall Semester								
FT	85.5%	89.2%	86.1%	85.8%	85.2%	86.6%	83.5%	83.7%
< FT	64.1%	67.9%	71.8%	68.8%	67.8%	69.8%	69.1%	64.9%
By Ethnicity								
Black	50.0%	92.9%	73.7%	85.7%	47.8%	50.0%	70.6%	36.4%
Hispanic	**	**	**	**	**	63.6%	90.0%	**
Other	75.1%	79.7%	77.9%	76.3%	76.2%	78.5%	75.6%	75.3%
By Age								
<25	77.1%	80.7%	78.4%	77.0%	76.7%	79.7%	77.9%	75.3%
25-29	65.9%	70.2%	86.1%	72.9%	70.9%	75.0%	65.6%	68.6%
30-39	69.8%	84.0%	73.0%	79.3%	70.1%	72.6%	70.4%	73.5%
>40	64.3%	76.9%	65.6%	66.7%	79.1%	70.8%	80.0%	75.0%
By Gender								
Male	72.2%	79.0%	76.7%	71.6%	70.1%	74.8%	71.7%	68.9%
Female	76.2%	80.2%	78.5%	78.8%	77.8%	79.5%	77.7%	77.5%
By GPA in the First Fall Semester								
3.0 - 4.0	92.9%	91.7%	84.1%	85.8%	84.2%	84.0%	86.3%	90.6%
2.0 - 2.99	90.2%	89.8%	90.9%	86.2%	84.0%	90.4%	88.0%	85.0%
< 2.0	48.9%	57.8%	58.3%	55.4%	57.9%	56.5%	53.1%	49.4%
By SAT Groups								
1200+	**	**	**	**	**	**	**	**
800-1199	85.9%	86.4%	79.6%	77.5%	80.2%	86.4%	78.8%	77.9%
400-799	79.4%	86.2%	82.9%	80.0%	80.5%	78.0%	82.1%	78.7%
No SAT	63.5%	72.6%	74.5%	74.0%	70.0%	72.5%	68.9%	69.5%

** Cell contains less than 10 students

(1) FTB-Full-Time Beginner parallels the cohort definition for the SRKA

(2) "New Majority" students are defined as freshman > 22, sophomores > 23, juniors >24, seniors > 25, or traditional age students who are attending less than full-time.

Northwest

Semester by Semester Retention through Five Semesters

	F86	F87	F88	F89	F90	F91	F92	F93
Ret. 2nd	78.1%	78.4%	78.0%	79.6%	78.1%	77.9%	78.9%	78.4%
Ret. 3rd	59.9%	58.8%	58.9%	59.0%	59.5%	61.6%	56.7%	
Ret. 4th	53.9%	51.2%	53.9%	54.0%	54.9%	54.0%	51.0%	
Ret. 5th	45.0%	45.5%	49.2%	47.6%	47.7%	47.4%		

Persistence to the Second Semester

By Entry Status								
Beg.	78.8%	78.0%	78.3%	80.4%	77.8%	79.6%	81.3%	80.3%
Trans.	76.1%	79.9%	76.9%	71.4%	80.2%	71.9%	71.4%	74.3%
FTB (1)	86.7%	82.9%	85.0%	87.1%	84.7%	85.2%	86.0%	83.3%
By Student Type								
Trad.	84.2%	82.9%	82.0%	87.0%	84.2%	80.1%	83.7%	82.8%
N. Maj. (2)	74.8%	75.7%	74.8%	73.8%	73.5%	76.5%	75.0%	73.7%
By Course Load in the First Fall Semester								
FT	86.1%	83.9%	85.1%	87.1%	85.3%	83.8%	85.7%	82.8%
< FT	66.4%	69.8%	64.8%	67.8%	63.9%	68.8%	67.1%	69.7%
By Ethnicity								
Black	73.7%	75.7%	78.9%	78.6%	70.7%	77.8%	75.7%	78.5%
Hispanic	80.9%	74.5%	64.8%	82.1%	86.4%	73.4%	77.7%	74.8%
Other	79.1%	79.4%	79.1%	79.7%	78.9%	78.3%	79.8%	78.8%
By Age								
<25	80.5%	79.1%	79.9%	82.0%	79.1%	79.2%	81.5%	79.2%
25-29	77.1%	69.7%	70.7%	73.3%	75.5%	76.7%	71.6%	74.2%
30-39	72.5%	81.7%	74.7%	74.1%	75.6%	74.5%	75.2%	78.1%
>40	64.4%	75.0%	66.7%	65.4%	69.8%	69.7%	58.9%	72.0%
By Gender								
Male	76.8%	78.1%	76.2%	77.8%	75.0%	75.2%	75.6%	75.7%
Female	79.1%	78.6%	79.1%	80.7%	80.0%	79.2%	80.5%	80.0%
By GPA in the First Fall Semester								
3.0 - 4.0	90.1%	90.0%	89.4%	88.3%	86.4%	89.2%	87.3%	90.7%
2.0 - 2.99	96.8%	91.7%	90.1%	87.5%	88.9%	90.3%	92.9%	91.0%
< 2.0	51.1%	58.0%	59.0%	65.1%	60.3%	56.8%	58.1%	56.8%
By SAT Groups								
1200+	**	**	100.0%	100.0%	84.6%	87.5%	**	**
800-1199	89.9%	86.8%	85.4%	84.5%	83.8%	82.4%	84.2%	82.5%
400-799	86.7%	81.3%	78.1%	82.9%	78.2%	78.8%	80.9%	78.7%
No SAT	63.3%	66.3%	68.4%	69.4%	70.9%	72.1%	70.5%	72.4%

** Cell contains less than 10 students

(1) FTB-Full-Time Beginner parallels the cohort definition for the SRKA

(2) "New Majority" students are defined as freshmen > 22, sophomores > 23, juniors >24, seniors > 25, or traditional age students who are attending less than full-time.

South Bend

Semester by Semester Retention through Five Semesters

	F86	F87	F88	F89	F90	F91	F92	F93
Ret. 2nd	72.6%	76.3%	78.6%	78.9%	77.3%	75.3%	75.6%	73.1%
Ret. 3rd	52.7%	51.5%	59.1%	57.5%	57.7%	58.7%	57.3%	
Ret. 4th	49.6%	48.4%	54.9%	51.7%	52.5%	51.6%	52.5%	
Ret. 5th	46.9%	44.3%	50.5%	50.0%	47.4%	46.9%		

Persistence to the Second Semester

By Entry Status								
Beg.	75.1%	77.5%	78.4%	79.2%	76.4%	74.6%	75.4%	73.0%
Trans.	67.1%	73.5%	79.0%	78.0%	79.9%	76.9%	75.3%	73.2%
FTB (1)	86.7%	85.8%	88.2%	85.6%	84.8%	83.2%	82.4%	80.2%
By Student Type								
Trad.	82.0%	83.7%	87.2%	82.9%	85.2%	84.1%	81.5%	79.6%
N. Maj. (2)	68.5%	72.5%	74.0%	76.0%	73.0%	70.2%	71.3%	67.4%
By Course Load in the First Fall Semester								
FT	85.8%	85.1%	88.3%	85.6%	86.6%	85.0%	82.6%	80.6%
< FT	56.7%	63.7%	62.7%	66.0%	64.5%	61.2%	64.0%	61.9%
By Ethnicity								
Black	63.2%	62.1%	75.8%	70.0%	78.4%	66.1%	64.7%	59.4%
Hispanic	**	**	71.4%	**	91.7%	69.6%	77.8%	60.0%
Other	73.0%	76.9%	78.9%	79.3%	77.1%	76.0%	76.1%	74.3%
By Age								
<25	74.2%	77.5%	80.7%	80.3%	78.9%	78.4%	77.7%	74.4%
25-29	75.4%	80.0%	63.5%	69.2%	70.0%	69.1%	61.0%	71.2%
30-39	59.7%	62.7%	75.0%	81.9%	75.2%	70.3%	81.6%	69.6%
>40	68.0%	75.0%	74.2%	61.9%	74.0%	61.1%	58.6%	64.7%
By Gender								
Male	70.6%	74.4%	79.5%	78.4%	78.6%	73.3%	72.8%	73.7%
Female	73.8%	77.5%	78.0%	79.2%	76.5%	76.5%	77.4%	72.8%
By GPA in the First Fall Semester								
3.0 - 4.0	87.3%	85.9%	87.4%	87.2%	86.2%	83.1%	87.8%	85.2%
2.0 - 2.99	93.3%	88.5%	90.5%	90.8%	86.8%	85.8%	86.8%	87.5%
< 2.0	45.0%	54.9%	59.5%	57.7%	59.7%	55.8%	50.1%	49.4%
By SAT Groups								
1200+	70.0%	80.0%	80.0%	100.0%	100.0%	90.0%	**	100.0%
800-1199	90.8%	84.6%	85.7%	85.2%	83.4%	79.3%	79.2%	80.7%
400-799	92.5%	74.2%	79.8%	78.8%	80.0%	82.0%	83.0%	73.7%
No SAT	58.7%	71.4%	73.5%	74.4%	73.6%	71.3%	71.3%	68.6%

** Cell contains less than 10 students

(1) FTB-Full-Time Beginner parallels the cohort definition for the SRKA

(2) "New Majority" students are defined as freshman > 22, sophomores > 23, juniors >24, seniors > 25, or traditional age students who are attending less than full-time.

Southeast

Semester by Semester Retention through Five Semesters

	F86	F87	F88	F89	F90	F91	F92	F93
Ret. 2nd	76.9%	77.8%	76.1%	80.8%	80.1%	80.0%	79.0%	77.6%
Ret. 3rd	53.8%	54.7%	61.7%	60.4%	63.0%	59.5%	55.8%	
Ret. 4th	47.8%	46.5%	53.7%	54.3%	53.7%	52.1%	46.6%	
Ret. 5th	43.1%	48.6%	49.4%	48.1%	50.0%	45.1%		

Persistence to the Second Semester

By Entry Status								
Beg.	77.2%	77.7%	75.3%	80.4%	79.9%	79.4%	79.4%	77.6%
Trans.	74.2%	79.2%	83.7%	84.5%	82.1%	84.4%	76.4%	77.8%
FTB (1)	89.0%	86.9%	86.6%	90.2%	85.6%	88.6%	85.6%	84.4%
By Student Type								
Trad.	83.7%	82.4%	82.3%	86.3%	84.1%	84.8%	82.3%	82.9%
N. Maj. (2)	74.3%	75.8%	73.4%	77.9%	77.6%	77.0%	76.3%	71.9%
By Course Load in the First Fall Semester								
FT	88.9%	86.9%	86.9%	89.9%	85.7%	88.4%	85.6%	84.7%
< FT	61.2%	62.9%	58.6%	65.0%	69.2%	64.6%	66.0%	62.4%
By Ethnicity								
Black	**	83.3%	66.7%	70.6%	77.8%	78.3%	82.4%	77.4%
Hispanic	**	**	**	**	**	**	**	71.4%
Other	77.1%	77.6%	76.3%	80.9%	80.2%	80.1%	78.9%	77.7%
By Age								
<25	80.6%	79.8%	79.7%	84.2%	82.4%	82.3%	81.2%	79.8%
25-29	71.4%	62.5%	68.8%	72.2%	65.9%	71.6%	72.0%	69.3%
30-39	69.9%	75.3%	66.9%	73.8%	79.0%	73.1%	75.8%	65.9%
>40	55.8%	72.7%	53.8%	59.3%	70.8%	74.5%	62.9%	73.5%
By Gender								
Male	75.2%	75.6%	76.8%	80.8%	78.9%	79.6%	78.2%	79.6%
Female	78.0%	79.4%	75.7%	80.8%	81.0%	80.3%	79.5%	76.1%
By GPA in the First Fall Semester								
3.0 - 4.0	90.8%	90.0%	84.4%	84.1%	88.8%	86.6%	87.2%	89.5%
2.0 - 2.99	95.1%	90.1%	91.2%	91.8%	89.7%	91.2%	88.4%	87.8%
< 2.0	53.6%	54.6%	57.7%	65.3%	55.6%	60.4%	63.6%	55.3%
By SAT Groups								
1200+	100.0%	**	81.8%	**	**	**	**	86.7%
800-1199	94.4%	90.3%	85.3%	88.7%	88.5%	91.2%	87.8%	86.3%
400-799	94.4%	81.5%	84.9%	83.5%	84.6%	83.6%	79.4%	80.8%
No SAT	63.0%	68.1%	66.9%	73.9%	72.8%	71.8%	73.0%	68.5%

** Cell contains less than 10 students

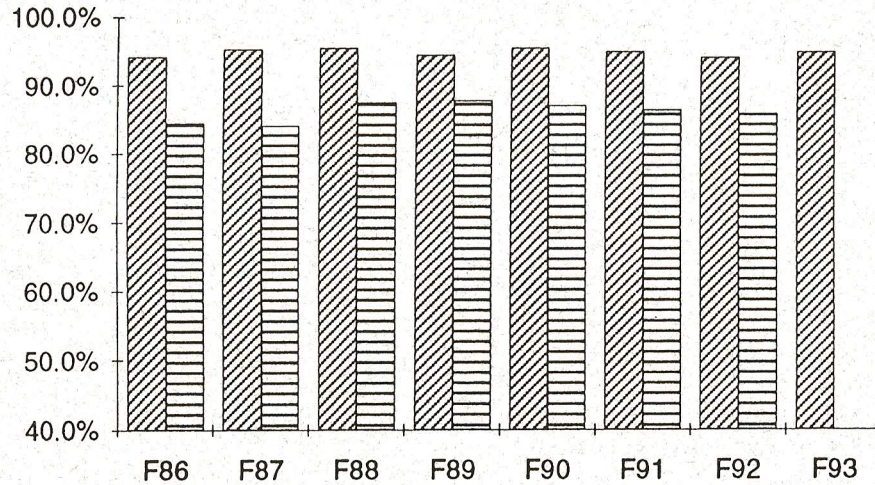
(1) FTB-Full-Time Beginner parallels the cohort definition for the SRKA

(2) "New Majority" students are defined as freshman > 22, sophomores > 23, juniors >24, seniors > 25, or traditional age students who are attending less than full-time.

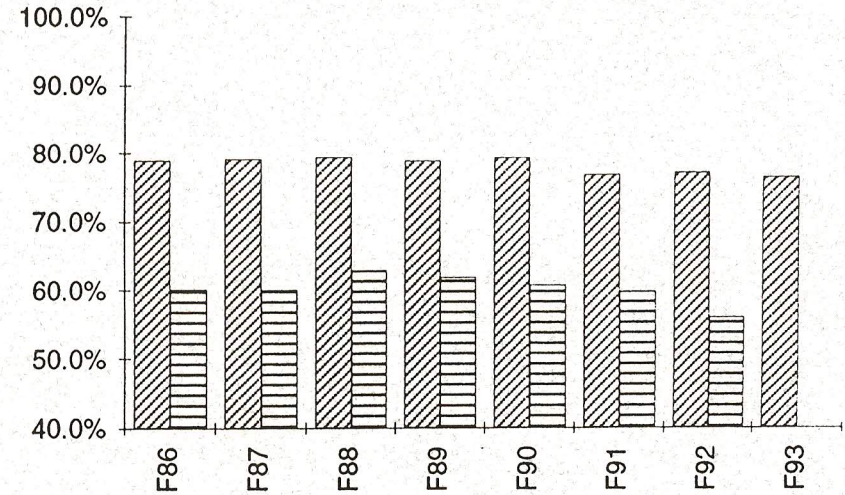
Supplement

Persistence to the Second and Third Semesters by Cohort - Campuses

Bloomington

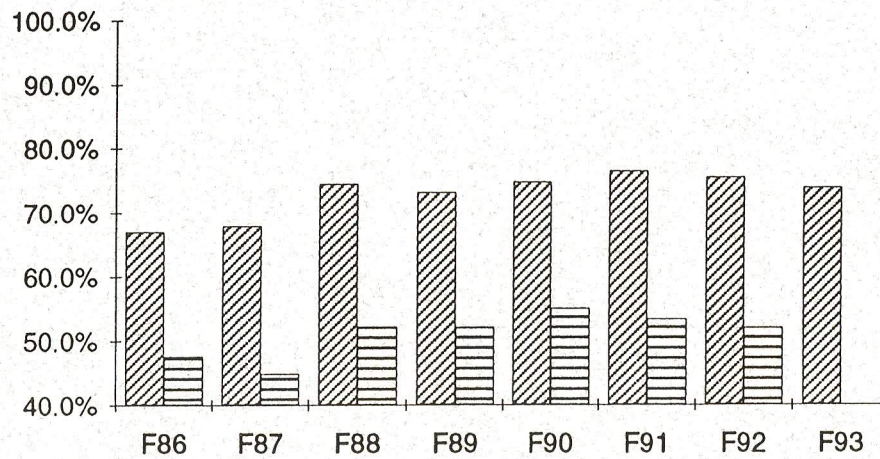


Indianapolis

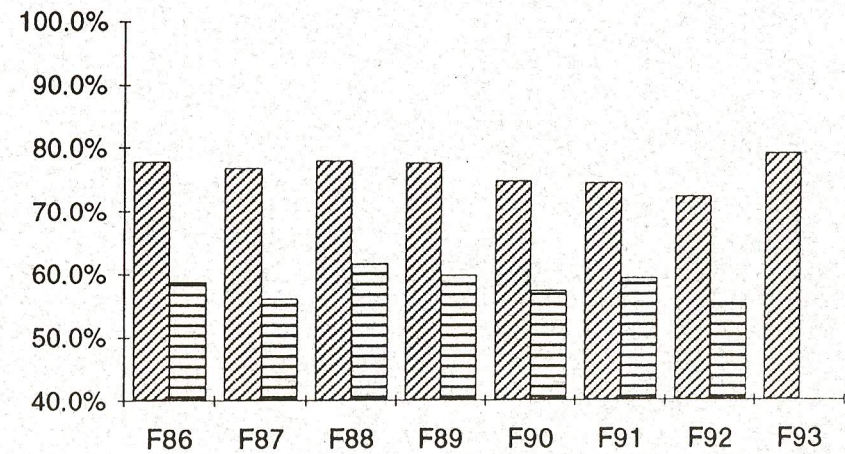


Ret. 2nd Ret. 3rd

East



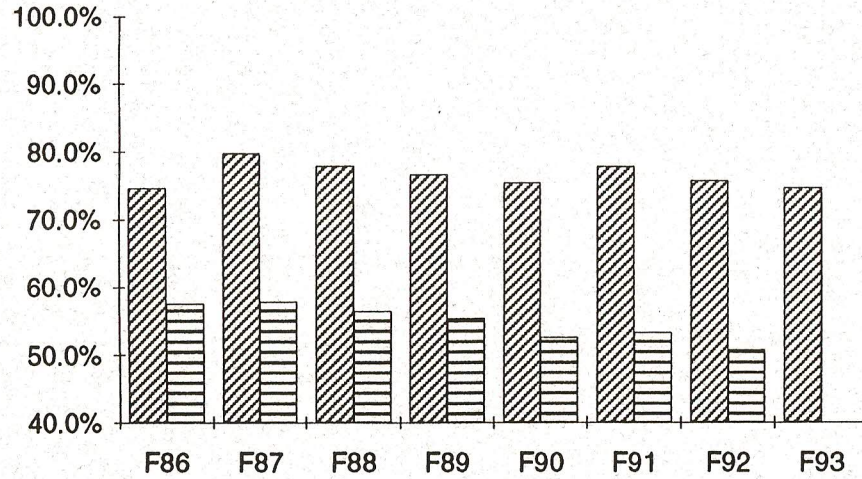
Fort Wayne



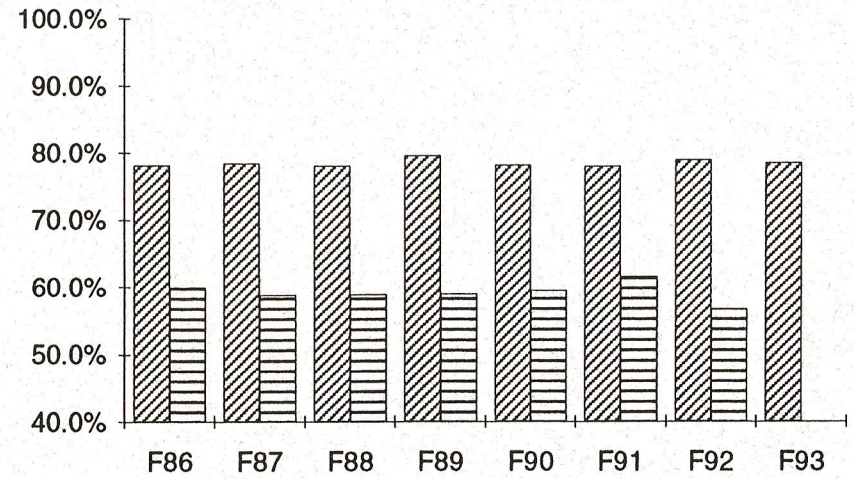
Supplement

Persistence to the Second and Third Semesters by Cohort - Campuses

Kokomo

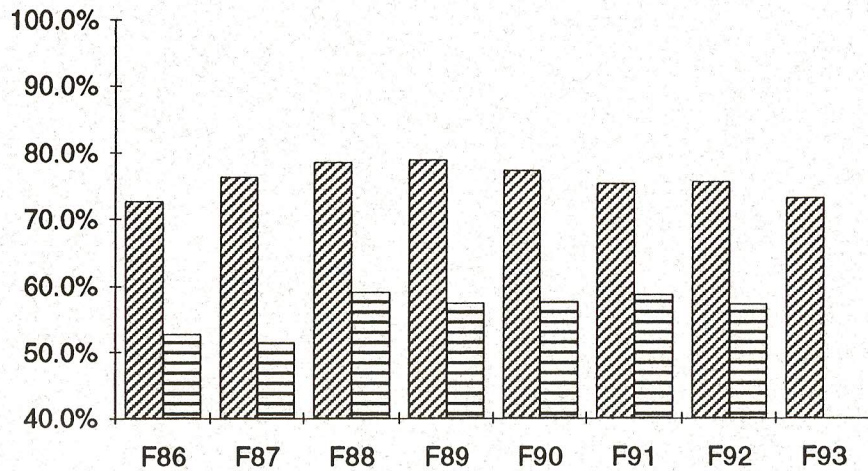


Northwest



Ret. 2nd Ret. 3rd

South Bend



Southeast

