



Official Undergraduate Retention Report

First to Second Semester Retention:
A Comparison of the Fall 86 - Fall 94 Cohorts
Vol. 4, No. 2

This report focuses attention on persistence to the second semester and is meant to accompany the fall retention report (V. 4, No. 1) which depicts persistence to the second year. Retention through five semesters is provided below and with the campus profiles to illustrate the most critical period for attrition.

The Retention Tracking System (RTS) provides the source data. The RTS establishes student cohorts based upon their entry semester and tracks their academic careers through receipt of a degree. Retention is defined as re-enrollment or receipt of degree. Fall cohorts contains students who enter college for the first time in the fall or those students who start during the second summer session and re-enroll in the fall. The base campus is determined by the first fall enrollment and that campus is credited with those students throughout their academic careers regardless of intercampus transfers.

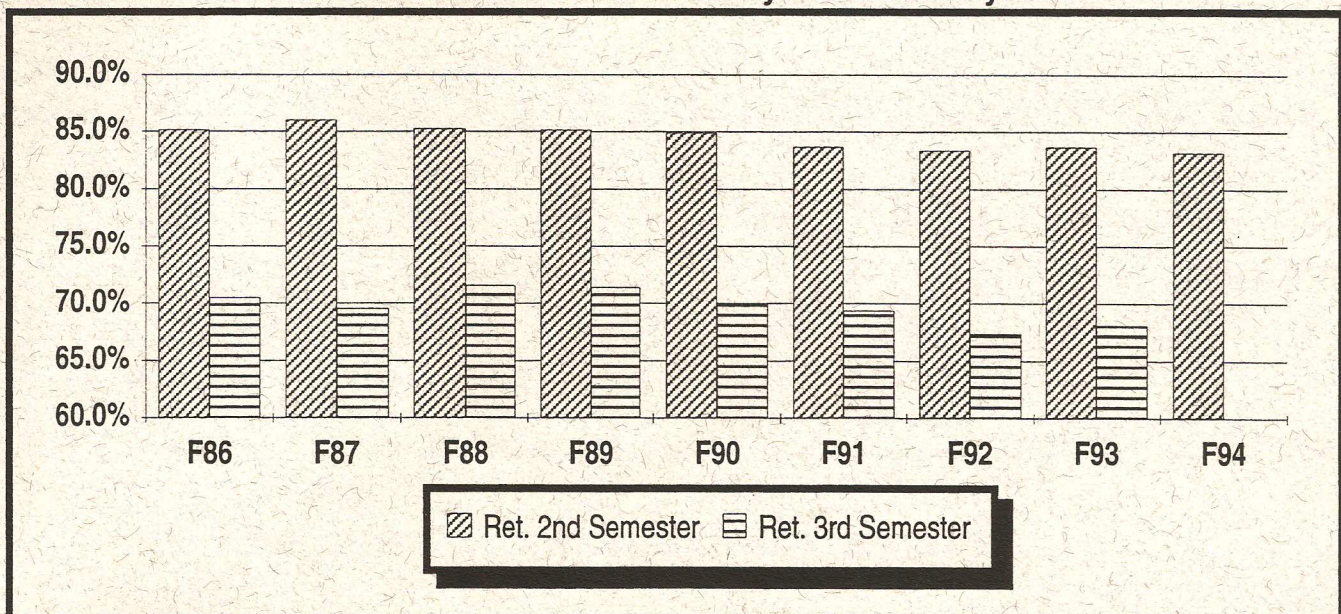
Systemwide, 83.2% of the fall 1994 cohort returned to the second semester. This figure is a .6% decrease in first to second semester persistence when compared to the fall 1993 cohort. Female students persisted to the second semester at an improved rate over previous cohorts and when compared to their male counterparts. Improvements in persistence rates were also witnessed for Asian, Black, and Hispanic students.

Your comments and suggestions are welcomed.

Semester by Semester Retention through Five Semesters - IU System

n=	12,883	14,165	14,182	16,099	15,606	15,651	15,882	14,889	14,796
	F86	F87	F88	F89	F90	F91	F92	F93	F94
Ret. 2nd	85.2%	86.0%	85.3%	85.2%	84.9%	83.7%	83.5%	83.8%	83.2%
Ret. 3rd	70.5%	69.6%	71.6%	71.4%	70.1%	69.4%	67.4%	68.1%	
Ret. 4th	65.8%	64.6%	67.0%	66.0%	64.9%	63.8%	62.0%	61.5%	
Ret. 5th	60.7%	61.7%	61.5%	61.3%	60.0%	57.9%	56.1%		

Persistence to the Second and Third Semesters by Cohort - IU System



Persistence to the Second Semester - IU System

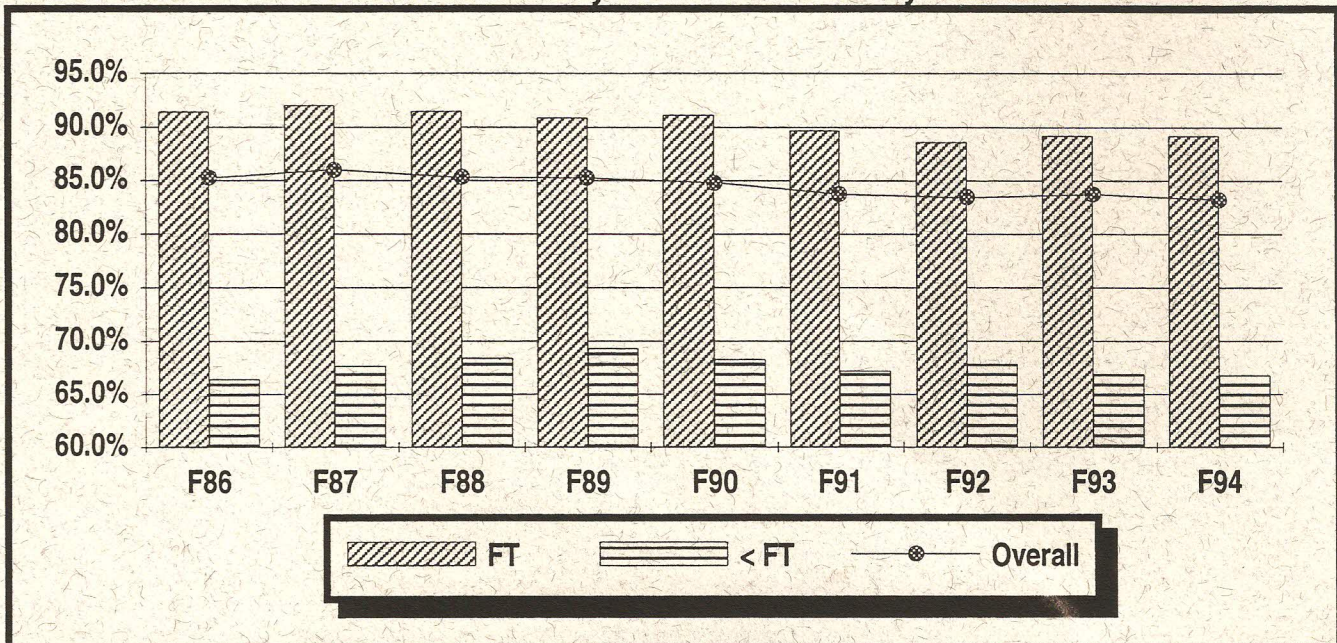
n=	12,883	14,165	14,182	16,099	15,606	15,651	15,882	14,889	14,796
	F86	F87	F88	F89	F90	F91	F92	F93	F94
Overall	85.2%	86.0%	85.3%	85.2%	84.9%	83.7%	83.5%	83.8%	83.2%
By Entry Status (1)									
Beg.	86.4%	87.1%	86.3%	86.2%	86.0%	84.9%	84.9%	85.1%	84.6%
Trans.	80.5%	81.4%	80.2%	79.5%	80.0%	79.0%	78.0%	78.7%	77.9%
FT-Beg.	91.9%	92.4%	92.0%	91.3%	91.4%	90.0%	89.3%	89.7%	88.9%
By Student Type									
Trad.	91.7%	92.5%	91.8%	91.1%	91.6%	90.1%	88.9%	89.3%	88.7%
N. Maj. (2)	76.2%	76.7%	76.5%	76.5%	75.5%	74.7%	74.7%	72.7%	71.1%
By Course Load in the First Fall Semester									
FT	91.4%	92.0%	91.5%	90.9%	91.1%	89.7%	88.6%	89.2%	89.2%
< FT	66.4%	67.7%	68.4%	69.3%	68.3%	67.2%	67.9%	66.9%	66.8%
By Ethnicity									
Am. Ind.	72.7%	85.7%	90.5%	81.3%	82.8%	82.5%	85.4%	84.1%	71.4%
Asian	89.6%	96.2%	92.0%	93.4%	92.6%	90.7%	89.3%	90.7%	93.4%
Black	79.8%	81.4%	81.1%	76.3%	77.4%	77.9%	75.4%	76.3%	76.9%
Hispanic	84.1%	81.6%	81.3%	86.8%	87.5%	78.4%	80.6%	77.8%	81.5%
Other	85.5%	86.2%	85.5%	85.7%	85.2%	84.1%	84.0%	84.3%	83.5%

(1) Entry status is a refined measure combining both entry status and entry class. Beginners are defined as beginners and entry class of A1, P1, B1, and B2 (i.e. assoc-1st year, cert-1st year, bacc-1st & 2nd year).

(2) "New Majority" students are defined as freshman > 22, sophomores > 23, juniors > 24, seniors > 25, or traditional age students who are attending less than full-time.

The graph below illustrates the relationship of course load on persistence to the second semester. Between 20-30% of a cohort enrolls as part-time students. These students choose to attend at a part-time level for a variety of reasons but, at the system level, they represent the greatest proportional loss of students from first to second semester. For example, in the Fall 1994 cohort 21.5% (3,178) enrolled as part-time students. Over 1,100 or 35% of that group did not re-enroll in the spring. Of the full-time students, over 1,300 or 11% made a similar decision.

Persistence to the Second Semester by Course Load - IU System



Persistence to the Second Semester - IU System (cont'd)

n=	12,883	14,165	14,182	16,099	15,606	15,651	15,882	14,889	14,796
	F86	F87	F88	F89	F90	F91	F92	F93	F94
Overall	85.2%	86.0%	85.3%	85.2%	84.9%	83.7%	83.5%	83.8%	83.2%
By Age									
<25	87.2%	87.9%	87.2%	86.9%	86.6%	85.9%	85.1%	85.3%	84.8%
25-29	73.0%	70.7%	74.1%	73.5%	73.4%	72.9%	72.3%	75.0%	73.4%
30-39	72.5%	74.8%	75.8%	76.9%	76.2%	73.3%	77.8%	75.4%	72.9%
>40	66.9%	75.8%	66.6%	66.9%	73.8%	69.7%	70.2%	73.3%	70.5%
By Gender									
Male	85.0%	85.6%	85.2%	84.5%	84.5%	83.4%	82.9%	83.5%	81.9%
Female	85.4%	86.2%	85.3%	85.7%	85.1%	84.0%	83.9%	84.0%	84.2%
By GPA in the First Fall Semester									
3.0 - 4.0	95.9%	93.4%	92.9%	93.1%	91.9%	91.9%	92.7%	92.7%	92.6%
2.0 - 2.99	96.7%	93.6%	93.5%	92.9%	92.3%	93.4%	92.6%	93.0%	92.4%
< 2.0	56.9%	63.8%	61.8%	62.5%	63.5%	60.3%	60.2%	59.4%	59.5%
By SAT Groups									
1400+	91.4%	97.9%	92.3%	94.4%	97.9%	94.1%	100.0%	100.0%	95.6%
1200-1399	96.5%	95.2%	95.2%	94.8%	94.1%	95.4%	95.7%	95.6%	94.5%
1000-1199	96.3%	94.2%	94.4%	92.6%	93.8%	92.7%	92.6%	92.8%	91.8%
800-999	94.1%	90.0%	88.5%	88.7%	88.2%	88.2%	88.0%	88.2%	87.7%
600-799	90.9%	84.4%	84.4%	82.2%	83.2%	81.8%	79.8%	80.6%	80.6%
400-599	83.8%	78.3%	76.8%	80.0%	76.6%	73.2%	75.2%	73.8%	75.3%
No SAT	63.2%	73.8%	73.6%	75.5%	75.3%	74.6%	74.9%	75.1%	74.6%

The table below provides retention rates by GPA and incoming SAT score. Academic success, as reflected in first semester GPA, appears to influence persistence more than incoming SAT score. The "No SAT" category includes students who were admitted without test scores required and a smaller number of students who reported ACT scores. The following page provides information on GPA and course load status.

Persistence to the Second Semester by GPA and SAT Score - IU System

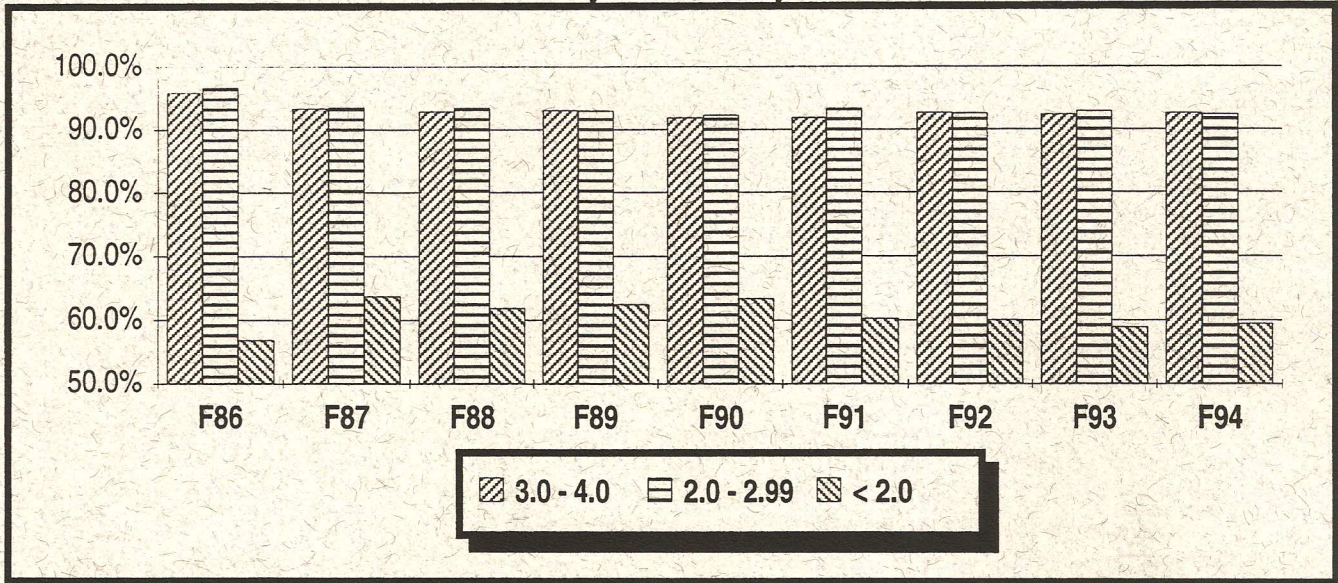
	F86	F87	F88	F89	F90	F91	F92	F93	F94
3.0 - 4.0 GPA									
1200 - UP	97.8%	96.7%	97.9%	97.8%	97.5%	96.6%	98.4%	98.0%	96.7%
800 - 1199	98.2%	96.7%	96.6%	96.4%	95.2%	95.9%	95.8%	96.1%	96.0%
400 - 799	93.9%	94.3%	91.7%	94.7%	91.3%	91.8%	91.4%	92.7%	92.2%
No SAT	90.8%	85.0%	84.4%	84.7%	85.1%	84.8%	87.2%	86.2%	86.7%
2.0 - 2.99 GPA									
1200 - UP	98.2%	98.8%	96.2%	95.6%	95.8%	97.8%	97.7%	96.7%	97.3%
800 - 1199	98.0%	95.4%	95.4%	95.2%	94.6%	95.6%	95.6%	95.4%	94.8%
400 - 799	97.1%	94.1%	93.6%	92.7%	92.6%	93.1%	92.1%	93.3%	91.5%
No SAT	91.5%	86.1%	86.5%	85.8%	85.2%	88.0%	85.5%	86.0%	88.0%
< 2.0 GPA									
1200 - UP	79.7%	68.8%	55.0%	61.0%	57.7%	73.9%	69.4%	59.4%	73.4%
800 - 1199	78.9%	71.1%	66.0%	66.0%	70.1%	66.7%	67.0%	66.9%	67.1%
400 - 799	80.1%	69.5%	70.1%	67.5%	68.4%	64.0%	63.1%	60.7%	64.5%
No SAT	28.4%	48.6%	48.2%	52.6%	51.4%	49.8%	49.0%	50.3%	46.7%

Persistence to the Second Semester by GPA and Course Load - IU System

	F86	F87	F88	F89	F90	F91	F92	F93	F94
3-4 GPA, FT	98.8%	97.8%	97.9%	97.9%	96.7%	97.1%	96.9%	97.3%	96.5%
3-4 GPA, <FT	86.9%	80.6%	80.2%	80.3%	80.4%	79.4%	81.9%	80.4%	80.0%
2-2.99 GPA, FT	98.4%	96.3%	96.2%	95.5%	95.4%	96.4%	95.3%	95.5%	95.0%
2-2.99 GPA, <FT	87.5%	80.1%	80.9%	81.2%	77.3%	79.1%	79.2%	78.8%	77.3%
< 2 GPA, FT	68.0%	73.9%	71.2%	70.4%	72.9%	68.0%	67.3%	67.0%	67.2%
< 2 GPA, <FT	37.9%	44.8%	46.7%	49.2%	48.8%	46.0%	44.9%	42.6%	38.5%

Academic success has long been associated with retention. Students achieving less than a 2.0 GPA in the first semester are much less likely to re-enroll in the second semester. Moderate academic success (2.0-2.99) seems to be equally indicative of second semester re-enrollment as the group achieving above a 3.0 GPA. The latter two GPA groups comprise roughly 75% of each cohort.

Persistence to the Second Semester by GPA - IU System



Persistence to the Second Semester by Campus

	F86	F87	F88	F89	F90	F91	F92	F93	F94
IUB	94.2%	95.3%	95.5%	94.5%	95.5%	94.9%	94.1%	94.8%	94.1%
IUPUI	78.9%	79.2%	79.4%	78.9%	79.4%	76.7%	77.1%	76.3%	76.4%
IUE	67.0%	67.6%	74.5%	73.2%	74.8%	76.8%	75.5%	73.9%	70.2%
IPFW	77.8%	76.8%	77.9%	77.5%	74.8%	74.4%	72.2%	79.1%	74.1%
IUK	74.6%	79.8%	77.9%	76.6%	75.4%	77.8%	75.7%	74.6%	68.9%
IUN	78.1%	78.4%	78.0%	79.7%	78.0%	77.9%	78.9%	78.7%	79.3%
IUSB	72.4%	76.3%	78.6%	78.9%	77.3%	75.3%	75.8%	73.4%	76.9%
IUS	76.9%	77.8%	76.1%	80.8%	80.3%	80.1%	79.0%	77.7%	75.3%

IPFW - I.U. Students only

The following pages provide campus specific profiles. Please note that the SAT groupings are collapsed to insure adequate representation within the cells. Similarly, the "*" designation means that fewer than 10 students were contained in that cell which distorts the use of percentages.

Source Information

University Budget Office	Produced 4/26/95
Todd Schmitz, Bryan 015	(812) 855-9893 email: schmitz@indiana.edu

Bloomington

Semester by Semester Retention through Five Semesters

n=	6,170	6,609	5,775	6,723	6,143	5,955	6,253	5,976	6,179
	F86	F87	F88	F89	F90	F91	F92	F93	F94
Ret. 2nd	94.2%	95.3%	95.5%	94.5%	95.5%	94.9%	94.1%	94.8%	94.1%
Ret. 3rd	84.5%	84.1%	87.5%	87.8%	87.0%	86.4%	85.8%	86.1%	
Ret. 4th	81.2%	81.4%	85.5%	84.8%	84.6%	83.0%	82.2%	81.6%	
Ret. 5th	76.7%	79.6%	81.0%	80.8%	80.4%	79.3%	77.1%		

Persistence to the Second Semester

By Entry Status (1)									
Beg.	94.8%	95.7%	96.2%	94.9%	96.1%	95.4%	94.5%	95.3%	94.4%
Trans.	91.2%	93.1%	89.1%	90.8%	91.1%	91.5%	90.7%	90.8%	92.3%
FT-Beg.	94.9%	95.9%	96.4%	95.1%	96.3%	95.5%	94.6%	95.4%	94.3%
By Student Type									
Trad.	94.7%	95.7%	96.1%	95.2%	96.1%	95.5%	94.4%	95.1%	94.5%
N. Maj. (2)	90.0%	91.2%	88.7%	85.7%	88.2%	84.1%	87.7%	84.5%	81.4%
By Course Load in the First Fall Semester									
FT	94.5%	95.6%	95.8%	94.8%	95.8%	95.2%	94.2%	95.0%	94.3%
< FT	75.3%	73.8%	73.4%	74.5%	77.3%	75.3%	81.9%	73.8%	76.6%
By Ethnicity									
Black	87.9%	92.0%	91.0%	84.3%	85.5%	86.9%	80.8%	82.1%	82.3%
Hispanic	91.5%	93.3%	96.5%	91.0%	90.3%	85.6%	88.3%	87.7%	91.9%
Other	94.6%	95.5%	95.8%	95.2%	96.2%	95.5%	95.0%	95.6%	94.8%
By Age									
<25	94.4%	95.5%	95.8%	94.7%	95.7%	95.2%	94.2%	94.9%	94.3%
25-29	78.6%	81.4%	73.7%	86.7%	87.8%	86.1%	85.4%	86.3%	76.6%
30-39	85.4%	83.3%	80.0%	75.9%	84.2%	72.7%	91.9%	86.1%	84.8%
>40	81.8%	72.7%	**	63.6%	**	63.6%	100.0%	**	90.0%
By Gender									
Male	93.9%	95.1%	96.1%	94.3%	96.0%	95.3%	94.5%	95.2%	93.7%
Female	94.5%	95.5%	95.1%	94.7%	95.2%	94.6%	93.8%	94.4%	94.4%
By GPA in the First Fall Semester									
3.0 - 4.0	99.2%	98.4%	98.2%	98.3%	97.7%	97.9%	97.9%	98.4%	98.1%
2.0 - 2.99	98.9%	97.9%	97.6%	97.5%	97.7%	97.4%	96.8%	97.2%	96.5%
< 2.0	72.7%	80.3%	78.7%	73.7%	81.6%	80.0%	77.8%	79.4%	78.5%
By SAT Groups									
1200+	97.6%	97.5%	97.4%	96.1%	97.0%	97.6%	98.2%	97.6%	97.0%
800-1199	97.2%	95.7%	96.6%	95.6%	96.4%	96.3%	95.5%	96.1%	95.2%
400-799	94.0%	93.6%	93.8%	89.7%	92.0%	91.9%	88.5%	90.2%	89.9%
No SAT	75.1%	92.1%	86.4%	88.5%	91.2%	87.8%	88.4%	89.8%	90.0%

** Cell contains less than 10 students

(1) Entry status is a refined measure combining both entry status and entry class. Beginners are defined as beginners a entry class of A1, P1, B1, and B2 (i.e. assoc-1st year, cert-1st year, bacc-1st & 2nd year).

(2) "New Majority" students are defined as freshmen > 22, sophomores > 23, juniors >24, seniors > 25, or traditional age students who are attending less than full-time.

Indianapolis

Semester by Semester Retention through Five Semesters

n=	2,734	2,906	3,531	3,883	3,735	3,766	3,671	3,336	3,069
	F86	F87	F88	F89	F90	F91	F92	F93	F94
Ret. 2nd	78.9%	79.2%	79.4%	78.9%	79.4%	76.7%	77.1%	76.3%	76.4%
Ret. 3rd	60.1%	60.1%	62.8%	61.9%	60.7%	59.8%	56.0%	56.8%	
Ret. 4th	53.4%	53.0%	56.0%	53.7%	53.1%	53.6%	49.2%	48.9%	
Ret. 5th	46.4%	47.8%	49.0%	47.8%	47.8%	46.4%	42.2%		

Persistence to the Second Semester

By Entry Status (1)									
Beg.	79.3%	80.2%	79.8%	79.3%	79.6%	76.6%	76.7%	76.3%	76.9%
Trans.	77.9%	76.3%	78.4%	77.1%	79.0%	76.9%	77.8%	76.3%	75.4%
FTB (1)	86.8%	88.0%	85.4%	84.6%	86.0%	80.8%	81.3%	81.1%	83.2%
By Student Type									
Trad.	85.1%	85.4%	83.9%	82.1%	85.1%	80.0%	79.7%	80.4%	81.7%
N. Maj. (2)	76.5%	76.3%	77.3%	77.1%	76.4%	74.8%	75.3%	73.0%	71.5%
By Course Load in the First Fall Semester									
FT	86.8%	87.3%	85.7%	84.7%	86.3%	82.2%	82.2%	81.9%	82.8%
< FT	71.2%	71.4%	73.1%	72.7%	71.9%	69.9%	70.1%	69.1%	66.3%
By Ethnicity									
Black	77.6%	72.5%	75.3%	68.9%	75.4%	75.4%	71.4%	71.9%	75.4%
Hispanic	76.5%	68.0%	78.6%	80.0%	83.3%	79.5%	66.7%	66.7%	73.1%
Other	79.0%	80.0%	79.8%	79.8%	79.8%	76.8%	77.8%	76.8%	76.5%
By Age									
<25	80.0%	80.2%	80.0%	79.3%	79.9%	77.1%	76.9%	76.2%	77.3%
25-29	74.1%	74.5%	76.5%	74.2%	75.9%	73.5%	75.6%	76.3%	72.3%
30-39	76.0%	74.8%	79.5%	79.4%	77.2%	76.9%	80.4%	77.7%	74.8%
>40	73.5%	82.1%	71.8%	81.4%	84.1%	74.3%	76.0%	75.2%	70.3%
By Gender									
Male	79.5%	78.3%	77.5%	76.5%	77.3%	74.7%	75.6%	74.8%	73.1%
Female	78.4%	79.9%	81.0%	80.6%	81.0%	78.0%	78.2%	77.4%	78.8%
By GPA in the First Fall Semester									
3.0 - 4.0	93.9%	88.2%	90.3%	91.3%	89.3%	90.5%	90.1%	87.9%	89.3%
2.0 - 2.99	93.8%	89.7%	89.5%	89.5%	89.1%	91.0%	90.7%	89.7%	89.3%
< 2.0	52.7%	58.8%	57.2%	57.7%	61.3%	53.7%	55.7%	51.2%	51.3%
By SAT Groups									
1200+	89.8%	81.6%	83.6%	82.1%	69.8%	77.5%	68.6%	85.7%	92.3%
800-1199	89.9%	82.9%	81.4%	81.0%	81.2%	79.2%	83.0%	80.8%	79.0%
400-799	86.4%	79.0%	81.6%	79.1%	80.7%	76.3%	74.3%	74.9%	79.5%
No SAT	60.9%	74.1%	73.5%	75.3%	76.4%	74.3%	73.8%	72.9%	72.6%

** Cell contains less than 10 students

(1) Entry status is a refined measure combining both entry status and entry class. Beginners are defined as beginners a entry class of A1, P1, B1, and B2 (i.e. assoc-1st year, cert-1st year, bacc-1st & 2nd year).

(2) "New Majority" students are defined as freshman > 22, sophomores > 23, juniors >24, seniors > 25, or traditional age students who are attending less than full-time.

East

Semester by Semester Retention through Five Semesters

n=	309	336	423	511	539	504	564	522	500
	F86	F87	F88	F89	F90	F91	F92	F93	F94
Ret. 2nd	67.0%	67.6%	74.5%	73.2%	74.8%	76.8%	75.5%	73.9%	70.2%
Ret. 3rd	47.6%	44.9%	52.2%	52.1%	55.1%	53.4%	52.0%	52.1%	
Ret. 4th	42.1%	39.9%	46.3%	43.4%	47.9%	45.8%	45.4%	44.3%	
Ret. 5th	39.8%	36.3%	40.0%	39.3%	46.2%	39.9%	38.7%		

Persistence to the Second Semester

By Entry Status (1)									
Beg.	64.3%	68.0%	73.6%	73.2%	75.6%	77.3%	76.3%	72.2%	70.9%
Trans.	78.3%	66.3%	80.8%	72.7%	70.0%	74.2%	71.7%	83.5%	66.7%
FTB (1)	81.3%	82.3%	83.0%	86.3%	85.9%	84.2%	83.3%	81.3%	73.9%
By Student Type									
Trad.	76.6%	74.1%	81.7%	81.7%	79.5%	81.3%	79.5%	78.1%	70.3%
N. Maj. (2)	64.5%	66.7%	72.4%	70.4%	73.5%	75.1%	73.4%	71.6%	70.2%
By Course Load in the First Fall Semester									
FT	81.7%	81.5%	83.9%	86.8%	85.7%	85.2%	83.2%	82.6%	73.2%
< FT	56.2%	59.4%	66.7%	62.2%	67.1%	67.5%	65.9%	63.7%	66.2%
By Ethnicity									
Black	**	**	58.3%	57.1%	76.9%	72.2%	81.0%	76.5%	69.2%
Hispanic	**	**	**	**	**	**	**	**	**
Other	67.3%	67.7%	74.9%	73.5%	74.6%	76.9%	75.2%	74.2%	70.2%
By Age									
<25	66.7%	66.7%	71.8%	74.2%	73.6%	79.0%	75.0%	73.8%	68.8%
25-29	65.2%	56.8%	68.2%	75.0%	77.6%	68.4%	80.8%	79.2%	65.8%
30-39	70.2%	77.6%	84.5%	73.9%	77.1%	74.2%	79.7%	75.7%	78.5%
>40	63.2%	63.6%	77.8%	57.6%	74.3%	76.7%	66.7%	62.1%	74.3%
By Gender									
Male	65.5%	66.4%	73.5%	68.5%	67.2%	73.3%	74.9%	73.2%	69.4%
Female	67.9%	68.3%	74.9%	75.7%	78.4%	78.0%	75.8%	74.4%	70.7%
By GPA in the First Fall Semester									
3.0 - 4.0	79.6%	78.3%	81.9%	80.0%	82.8%	85.6%	88.7%	88.9%	81.0%
2.0 - 2.99	91.0%	72.9%	91.5%	86.2%	85.4%	92.0%	85.2%	87.1%	82.9%
< 2.0	36.2%	50.5%	55.4%	58.2%	59.1%	59.9%	57.1%	52.4%	54.1%
By SAT Groups									
1200+	**	**	**	**	**	**	**	**	**
800-1199	91.4%	76.8%	87.1%	79.4%	85.7%	85.7%	82.3%	78.2%	73.5%
400-799	84.7%	75.0%	67.9%	80.4%	78.0%	81.3%	75.4%	75.6%	73.7%
No SAT	53.9%	62.3%	73.7%	68.2%	70.8%	72.9%	72.7%	71.1%	67.9%

** Cell contains less than 10 students

(1) Entry status is a refined measure combining both entry status and entry class. Beginners are defined as beginners a entry class of A1, P1, B1, and B2 (i.e. assoc-1st year, cert-1st year, bacc-1st & 2nd year).

(2) "New Majority" students are defined as freshman > 22, sophomores > 23, juniors >24, seniors > 25, or traditional age students who are attending less than full-time.

Fort Wayne

Semester by Semester Retention through Five Semesters

n=	948	1,075	958	1,145	1,248	1,196	1,106	1,057	1,288
	F86	F87	F88	F89	F90	F91	F92	F93	F94
Ret. 2nd	77.8%	76.8%	77.9%	77.5%	74.8%	74.4%	72.2%	79.1%	74.1%
Ret. 3rd	58.8%	56.2%	61.6%	59.8%	57.5%	59.3%	55.3%	56.7%	
Ret. 4th	54.2%	51.1%	54.8%	53.2%	49.8%	50.7%	49.5%	48.0%	
Ret. 5th	50.3%	46.8%	48.5%	47.9%	44.3%	43.3%	42.9%		

Persistence to the Second Semester

By Entry Status (1)									
Beg.	80.3%	78.7%	80.6%	80.0%	76.3%	75.8%	72.7%	80.5%	75.1%
Trans.	72.7%	72.7%	71.8%	72.6%	71.8%	71.5%	71.3%	76.2%	71.8%
FTB (1)	84.6%	85.0%	87.0%	85.6%	82.8%	81.5%	75.9%	85.1%	81.5%
By Student Type									
Trad.	80.3%	84.4%	84.6%	81.7%	81.7%	80.1%	75.5%	82.8%	80.8%
N. Maj. (2)	76.4%	72.5%	73.1%	74.6%	70.1%	70.2%	69.6%	74.5%	66.4%
By Course Load in the First Fall Semester									
FT	84.1%	85.2%	87.2%	84.3%	83.4%	82.4%	76.9%	85.1%	81.9%
< FT	65.7%	62.3%	60.8%	65.7%	60.3%	60.1%	63.3%	67.5%	57.2%
By Ethnicity									
Black	73.7%	77.8%	55.0%	64.7%	72.0%	62.9%	72.0%	83.8%	66.1%
Hispanic	**	57.1%	**	90.0%	**	81.8%	63.6%	93.8%	75.8%
Other	78.1%	77.1%	78.3%	77.5%	74.8%	74.7%	72.3%	78.7%	74.5%
By Age									
<25	79.5%	80.5%	80.2%	79.8%	76.8%	76.8%	72.2%	79.4%	75.7%
25-29	68.5%	59.1%	72.1%	69.4%	66.7%	68.1%	69.8%	74.7%	67.3%
30-39	75.3%	65.8%	69.9%	73.8%	73.3%	63.9%	70.8%	77.7%	67.4%
>40	69.6%	70.4%	50.0%	63.0%	60.0%	62.2%	81.8%	82.2%	67.3%
By Gender									
Male	78.0%	76.8%	76.6%	77.9%	75.4%	73.7%	69.4%	74.5%	72.8%
Female	77.8%	76.9%	78.7%	77.2%	74.5%	74.9%	74.0%	82.0%	75.1%
By GPA in the First Fall Semester									
3.0 - 4.0	95.0%	86.0%	85.8%	86.9%	84.7%	83.2%	88.0%	86.8%	85.5%
2.0 - 2.99	94.7%	86.8%	88.3%	84.7%	84.4%	90.0%	84.5%	90.4%	87.9%
< 2.0	45.2%	55.6%	55.8%	57.3%	48.7%	48.6%	42.2%	57.7%	51.7%
By SAT Groups									
1200+	83.3%	71.4%	76.9%	85.7%	73.3%	73.3%	90.5%	66.7%	**
800-1199	93.9%	84.8%	84.3%	82.9%	80.3%	80.0%	75.5%	82.4%	80.8%
400-799	91.3%	80.2%	79.7%	79.8%	75.5%	76.6%	67.6%	76.9%	72.8%
No SAT	55.8%	66.1%	68.5%	69.5%	66.1%	64.0%	70.2%	76.7%	67.2%

** Cell contains less than 10 students

Fort Wayne - I.U. Students only.

(1) Entry status is a refined measure combining both entry status and entry class. Beginners are defined as beginners a entry class of A1, P1, B1, and B2 (i.e. assoc-1st year, cert-1st year, bacc-1st & 2nd year).

(2) "New Majority" students are defined as freshman > 22, sophomores > 23, juniors >24, seniors > 25, or traditional age students who are attending less than full-time.

Kokomo

Semester by Semester Retention through Five Semesters

n=	461	677	674	691	755	770	807	708	668
	F86	F87	F88	F89	F90	F91	F92	F93	F94
Ret. 2nd	74.6%	79.8%	77.9%	76.6%	75.4%	77.8%	75.7%	74.6%	68.9%
Ret. 3rd	57.5%	57.8%	56.4%	55.3%	52.6%	53.2%	50.7%	50.4%	
Ret. 4th	49.5%	45.6%	49.7%	48.5%	48.5%	48.1%	43.5%	40.5%	
Ret. 5th	43.6%	40.5%	40.5%	43.0%	39.1%	34.7%	37.4%		

Persistence to the Second Semester

By Entry Status (1)									
Beg.	76.6%	81.5%	78.1%	78.5%	78.8%	80.0%	79.2%	76.6%	70.0%
Trans.	65.4%	68.5%	77.1%	68.2%	63.3%	68.7%	62.6%	64.7%	64.0%
FTB (1)	86.3%	90.3%	85.5%	86.5%	87.1%	88.6%	86.8%	84.2%	76.8%
By Student Type									
Trad.	78.9%	90.4%	79.8%	85.4%	81.5%	84.6%	80.2%	79.3%	70.3%
N. Maj. (2)	73.6%	77.6%	77.4%	73.8%	73.5%	75.5%	74.3%	71.8%	68.0%
By Course Load in the First Fall Semester									
FT	85.5%	89.2%	86.1%	85.8%	85.2%	86.6%	83.5%	83.7%	75.7%
< FT	64.1%	67.9%	71.8%	68.8%	67.8%	69.8%	69.1%	64.9%	60.5%
By Ethnicity									
Black	50.0%	92.9%	73.7%	85.7%	47.8%	50.0%	70.6%	36.4%	52.9%
Hispanic	**	**	**	**	**	63.6%	90.0%	**	90.0%
Other	75.1%	79.7%	77.9%	76.3%	76.2%	78.5%	75.6%	75.3%	69.0%
By Age									
<25	77.1%	80.7%	78.4%	77.0%	76.7%	79.7%	77.9%	75.3%	67.9%
25-29	65.9%	70.2%	86.1%	72.9%	70.9%	75.0%	65.6%	68.6%	78.3%
30-39	69.8%	84.0%	73.0%	79.3%	70.1%	72.6%	70.4%	73.5%	70.8%
>40	64.3%	76.9%	65.6%	66.7%	79.1%	70.8%	80.0%	75.0%	67.9%
By Gender									
Male	72.2%	79.0%	76.7%	71.6%	70.1%	74.8%	71.7%	68.9%	65.8%
Female	76.2%	80.2%	78.5%	78.8%	77.8%	79.5%	77.7%	77.5%	70.5%
By GPA in the First Fall Semester									
3.0 - 4.0	92.9%	91.7%	84.1%	85.8%	84.2%	84.0%	86.3%	90.6%	85.3%
2.0 - 2.99	90.2%	89.8%	90.9%	86.2%	84.0%	90.4%	88.0%	85.0%	84.2%
< 2.0	48.9%	57.8%	58.3%	55.4%	57.9%	56.5%	53.1%	49.4%	41.9%
By SAT Groups									
1200+	**	**	**	**	**	**	**	**	**
800-1199	85.9%	86.4%	79.6%	77.5%	80.2%	86.4%	78.8%	77.9%	76.3%
400-799	79.4%	86.2%	82.9%	80.0%	80.5%	78.0%	82.1%	78.7%	63.9%
No SAT	63.5%	72.6%	74.5%	74.0%	70.0%	72.5%	68.9%	69.5%	68.2%

** Cell contains less than 10 students

(1) Entry status is a refined measure combining both entry status and entry class. Beginners are defined as beginners a entry class of A1, P1, B1, and B2 (i.e. assoc-1st year, cert-1st year, bacc-1st & 2nd year).

(2) "New Majority" students are defined as freshmen > 22, sophomores > 23, juniors >24, seniors > 25, or traditional age students who are attending less than full-time.

Northwest

Semester by Semester Retention through Five Semesters

n=	731	828	918	957	1,014	1,211	1,149	1,096	1,054
	F86	F87	F88	F89	F90	F91	F92	F93	F94
Ret. 2nd	78.1%	78.4%	78.0%	79.7%	78.0%	77.9%	78.9%	78.7%	79.3%
Ret. 3rd	59.9%	58.8%	58.9%	59.0%	59.5%	61.6%	56.7%	58.3%	
Ret. 4th	53.9%	51.2%	53.9%	54.0%	54.9%	53.9%	51.1%	50.5%	
Ret. 5th	45.0%	45.5%	49.2%	47.6%	47.7%	47.3%	44.0%		

Persistence to the Second Semester

By Entry Status (1)									
Beg.	78.8%	78.0%	78.3%	80.5%	77.7%	79.6%	81.0%	80.1%	80.9%
Trans.	75.5%	79.9%	76.2%	72.8%	79.7%	71.6%	71.5%	74.6%	74.4%
FTB (1)	86.7%	82.9%	85.0%	87.1%	84.7%	85.3%	86.1%	83.2%	84.8%
By Student Type									
Trad.	84.2%	82.9%	82.0%	87.0%	84.2%	80.1%	83.7%	82.8%	82.6%
N. Maj. (2)	74.8%	75.7%	74.8%	73.8%	73.5%	76.5%	75.0%	73.7%	75.4%
By Course Load in the First Fall Semester									
FT	86.1%	83.9%	85.1%	87.1%	85.3%	83.8%	85.7%	82.9%	83.5%
< FT	66.4%	69.8%	64.8%	67.9%	63.6%	68.8%	67.1%	70.5%	69.6%
By Ethnicity									
Black	73.7%	75.7%	78.9%	79.0%	70.7%	77.8%	75.7%	79.3%	80.3%
Hispanic	80.9%	74.5%	64.8%	82.1%	86.4%	73.4%	77.7%	75.5%	75.0%
Other	79.1%	79.4%	79.1%	79.7%	78.7%	78.3%	79.8%	79.0%	79.6%
By Age									
<25	80.5%	79.1%	79.9%	82.0%	79.1%	79.2%	81.5%	79.5%	80.3%
25-29	77.1%	69.7%	70.7%	73.3%	74.5%	76.7%	71.6%	75.9%	77.0%
30-39	72.5%	81.7%	74.7%	74.1%	75.6%	74.5%	75.2%	78.1%	75.3%
>40	64.4%	75.0%	66.7%	66.7%	69.8%	69.7%	58.9%	72.0%	73.2%
By Gender									
Male	76.8%	78.1%	76.2%	77.8%	75.0%	75.1%	75.6%	75.7%	77.0%
Female	79.1%	78.6%	79.1%	80.9%	79.9%	79.2%	80.5%	80.6%	80.4%
By GPA in the First Fall Semester									
3.0 - 4.0	90.1%	90.0%	89.4%	88.3%	86.0%	89.2%	87.3%	90.7%	90.2%
2.0 - 2.99	96.8%	91.7%	90.1%	87.5%	88.9%	90.3%	92.9%	91.0%	89.7%
< 2.0	51.1%	58.0%	59.0%	65.3%	60.3%	56.8%	58.1%	57.4%	59.7%
By SAT Groups									
1200+	**	**	100.0%	100.0%	84.6%	87.5%	**	**	**
800-1199	89.9%	86.8%	85.4%	84.5%	83.8%	82.3%	84.2%	82.3%	83.3%
400-799	86.7%	81.3%	78.1%	82.9%	78.2%	78.8%	80.9%	78.7%	80.7%
No SAT	63.3%	66.3%	68.4%	69.7%	70.6%	72.1%	70.5%	72.9%	72.2%

** Cell contains less than 10 students

(1) Entry status is a refined measure combining both entry status and entry class. Beginners are defined as beginners a entry class of A1, P1, B1, and B2 (i.e. assoc-1st year, cert-1st year, bacc-1st & 2nd year).

(2) "New Majority" students are defined as freshman > 22, sophomores > 23, juniors > 24, seniors > 25, or traditional age students who are attending less than full-time.

South Bend

Semester by Semester Retention through Five Semesters

n=	693	814	870	1,061	1,143	1,229	1,229	1,138	1,084
	F86	F87	F88	F89	F90	F91	F92	F93	F94
Ret. 2nd	72.4%	76.3%	78.6%	78.9%	77.3%	75.3%	75.8%	73.4%	76.9%
Ret. 3rd	52.7%	51.5%	59.1%	57.5%	57.7%	58.7%	57.4%	57.6%	
Ret. 4th	49.6%	48.4%	54.9%	51.7%	52.5%	51.6%	52.6%	49.5%	
Ret. 5th	46.9%	44.3%	50.5%	50.0%	47.4%	46.9%	46.8%		

Persistence to the Second Semester

By Entry Status (1)									
Beg.	74.9%	77.5%	78.4%	79.2%	76.4%	74.8%	75.9%	73.2%	76.9%
Trans.	67.3%	73.5%	79.3%	78.2%	79.9%	77.0%	75.3%	73.8%	77.1%
FTB (1)	86.4%	85.8%	88.2%	85.6%	84.8%	83.4%	83.0%	80.4%	83.6%
By Student Type									
Trad.	82.0%	83.7%	87.2%	82.9%	85.2%	84.1%	81.5%	79.6%	82.7%
N. Maj. (2)	68.5%	72.5%	74.0%	76.0%	73.0%	70.2%	71.3%	67.4%	71.7%
By Course Load in the First Fall Semester									
FT	85.5%	85.1%	88.3%	85.6%	86.6%	85.0%	82.8%	80.7%	83.2%
< FT	56.7%	63.7%	62.7%	66.0%	64.5%	61.2%	64.0%	62.3%	66.1%
By Ethnicity									
Black	63.2%	62.1%	75.8%	70.0%	78.4%	66.1%	64.7%	59.4%	70.5%
Hispanic	**	**	71.4%	**	91.7%	69.6%	77.8%	60.0%	57.9%
Other	72.8%	76.9%	78.9%	79.3%	77.1%	76.0%	76.2%	74.5%	77.7%
By Age									
<25	74.2%	77.5%	80.7%	80.3%	78.9%	78.4%	77.9%	74.7%	77.8%
25-29	75.4%	80.0%	63.5%	69.2%	70.0%	69.1%	61.0%	71.2%	77.8%
30-39	58.3%	62.7%	75.0%	81.9%	75.2%	70.3%	81.6%	70.2%	71.8%
>40	68.0%	75.0%	74.2%	61.9%	74.0%	61.1%	58.6%	64.7%	70.7%
By Gender									
Male	70.3%	74.4%	79.5%	78.4%	78.6%	73.3%	72.9%	73.7%	74.6%
Female	73.8%	77.5%	78.0%	79.2%	76.5%	76.5%	77.5%	73.2%	78.4%
By GPA in the First Fall Semester									
3.0 - 4.0	87.3%	85.9%	87.4%	87.2%	86.2%	83.1%	87.8%	85.2%	85.6%
2.0 - 2.99	93.3%	88.5%	90.5%	90.8%	86.8%	85.8%	86.8%	87.5%	90.8%
< 2.0	44.6%	54.9%	59.5%	57.7%	59.7%	55.8%	50.4%	49.9%	57.1%
By SAT Groups									
1200+	70.0%	80.0%	80.0%	100.0%	100.0%	90.0%	**	100.0%	75.0%
800-1199	90.8%	84.6%	85.7%	85.2%	83.4%	79.3%	79.4%	80.7%	82.7%
400-799	92.5%	74.2%	79.8%	78.8%	80.0%	82.0%	83.0%	74.0%	79.8%
No SAT	58.4%	71.4%	73.5%	74.4%	73.6%	71.3%	71.4%	68.9%	72.9%

** Cell contains less than 10 students

(1) Entry status is a refined measure combining both entry status and entry class. Beginners are defined as beginners a entry class of A1, P1, B1, and B2 (i.e. assoc-1st year, cert-1st year, bacc-1st & 2nd year).

(2) "New Majority" students are defined as freshman > 22, sophomores > 23, juniors >24, seniors > 25, or traditional age students who are attending less than full-time.

Southeast

Semester by Semester Retention through Five Semesters

n=	837	920	1,033	1,128	1,029	1,020	1,103	1,056	954
	F86	F87	F88	F89	F90	F91	F92	F93	F94
Ret. 2nd	76.9%	77.8%	76.1%	80.8%	80.3%	80.1%	79.0%	77.7%	75.3%
Ret. 3rd	53.8%	54.7%	61.7%	60.4%	63.2%	59.5%	55.8%	54.5%	
Ret. 4th	47.8%	46.5%	53.6%	54.3%	53.8%	52.2%	46.6%	48.6%	
Ret. 5th	43.1%	48.6%	49.4%	48.1%	50.1%	45.1%	41.9%		

Persistence to the Second Semester

By Entry Status (1)									
Beg.	77.2%	77.7%	75.3%	80.4%	80.0%	79.5%	79.4%	77.7%	75.3%
Trans.	74.2%	79.2%	83.7%	84.5%	82.1%	84.4%	76.4%	77.8%	74.8%
FTB (1)	89.0%	86.9%	86.6%	90.2%	85.7%	88.8%	85.6%	84.5%	80.6%
By Student Type									
Trad.	83.7%	82.4%	82.3%	86.3%	84.1%	84.8%	82.3%	82.9%	79.8%
N. Maj. (2)	74.3%	75.8%	73.4%	77.9%	77.6%	77.0%	76.3%	71.9%	69.8%
By Course Load in the First Fall Semester									
FT	88.9%	86.9%	86.9%	89.9%	85.9%	88.5%	85.6%	84.8%	81.0%
< FT	61.2%	62.9%	58.6%	65.0%	69.4%	64.6%	66.0%	62.6%	61.6%
By Ethnicity									
Black	**	83.3%	66.7%	70.6%	82.4%	78.3%	82.4%	77.4%	61.1%
Hispanic	**	**	**	**	**	**	**	71.4%	80.0%
Other	77.1%	77.6%	76.3%	80.9%	80.3%	80.1%	78.9%	77.8%	75.5%
By Age									
<25	80.6%	79.8%	79.7%	84.2%	82.5%	82.4%	81.2%	80.0%	77.0%
25-29	71.4%	62.5%	68.8%	72.2%	65.9%	71.6%	72.0%	69.3%	74.1%
30-39	69.9%	75.3%	66.9%	73.8%	79.7%	73.1%	75.8%	65.9%	65.0%
>40	55.8%	72.7%	53.8%	59.3%	70.8%	74.5%	62.9%	73.5%	64.1%
By Gender									
Male	75.2%	75.6%	76.8%	80.8%	79.1%	79.8%	78.2%	79.5%	71.2%
Female	78.0%	79.4%	75.7%	80.8%	81.1%	80.3%	79.5%	76.4%	78.1%
By GPA in the First Fall Semester									
3.0 - 4.0	90.8%	90.0%	84.4%	84.1%	88.8%	86.6%	87.2%	89.8%	87.3%
2.0 - 2.99	95.1%	90.1%	91.2%	91.8%	89.7%	91.2%	88.4%	87.8%	90.0%
< 2.0	53.6%	54.6%	57.7%	65.3%	56.0%	60.6%	63.6%	55.3%	54.3%
By SAT Groups									
1200+	100.0%	**	81.8%	**	**	**	**	86.7%	90.0%
800-1199	94.4%	90.3%	85.3%	88.7%	88.5%	91.5%	87.8%	86.6%	82.3%
400-799	94.4%	81.5%	84.9%	83.5%	84.9%	83.6%	79.4%	80.8%	79.4%
No SAT	63.0%	68.1%	66.9%	73.9%	73.0%	71.8%	73.0%	68.6%	66.9%

** Cell contains less than 10 students

(1) Entry status is a refined measure combining both entry status and entry class. Beginners are defined as beginners a entry class of A1, P1, B1, and B2 (i.e. assoc-1st year, cert-1st year, bacc-1st & 2nd year).

(2) "New Majority" students are defined as freshman > 22, sophomores > 23, juniors >24, seniors > 25, or traditional age students who are attending less than full-time.