



**First to Second Semester Retention:
A Comparison of the Fall 86 - Fall 97 Cohorts
Vol. 7, No. 2**

This report focuses attention on persistence to the second semester and is meant to accompany the fall retention report (V. 7, No. 1) which depicts persistence to the second year. Retention through five semesters is provided below and with the campus profiles to illustrate the most critical period for attrition.

The Retention Tracking System (RTS) provides the source data. The RTS establishes student cohorts based upon their entry semester and tracks their academic careers through receipt of a degree. Retention is defined as re-enrollment or receipt of degree. Fall cohorts contain students who enter college for the first time in the fall or those students who start during the summer and re-enroll in the fall. The base campus is determined by the first fall enrollment and that campus is credited with those students throughout their academic careers regardless of intercampus transfers. "Residency" status has been added to this report as an additional characteristic with which to view retention.

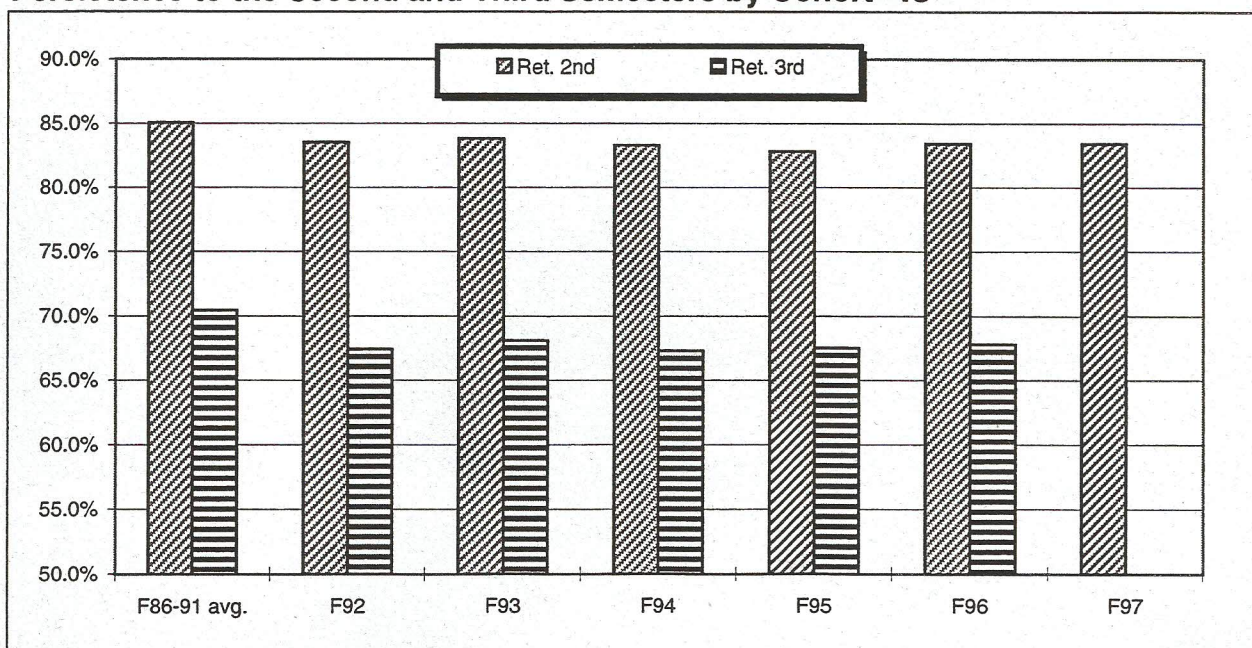
Aggregating all campuses, 83.4% of the fall 1997 cohort returned to the second semester which is the same rate at which the 1996 cohort returned.

Your comments and suggestions are welcomed.

Semester by Semester Retention through Five Semesters - IU

n=	88,555	15,877	14,885	14,784	14,932	15,229	15,732
	F86-91 avg.	F92	F93	F94	F95	F96	F97
Ret. 2nd	85.0%	83.5%	83.8%	83.3%	82.8%	83.4%	83.4%
Ret. 3rd	70.4%	67.4%	68.1%	67.3%	67.5%	67.8%	
Ret. 4th	65.4%	62.0%	61.7%	61.4%	61.3%	61.4%	
Ret. 5th	60.5%	56.1%	56.3%	56.4%	56.7%		

Persistence to the Second and Third Semesters by Cohort - IU



Persistence to the Second Semester - IU

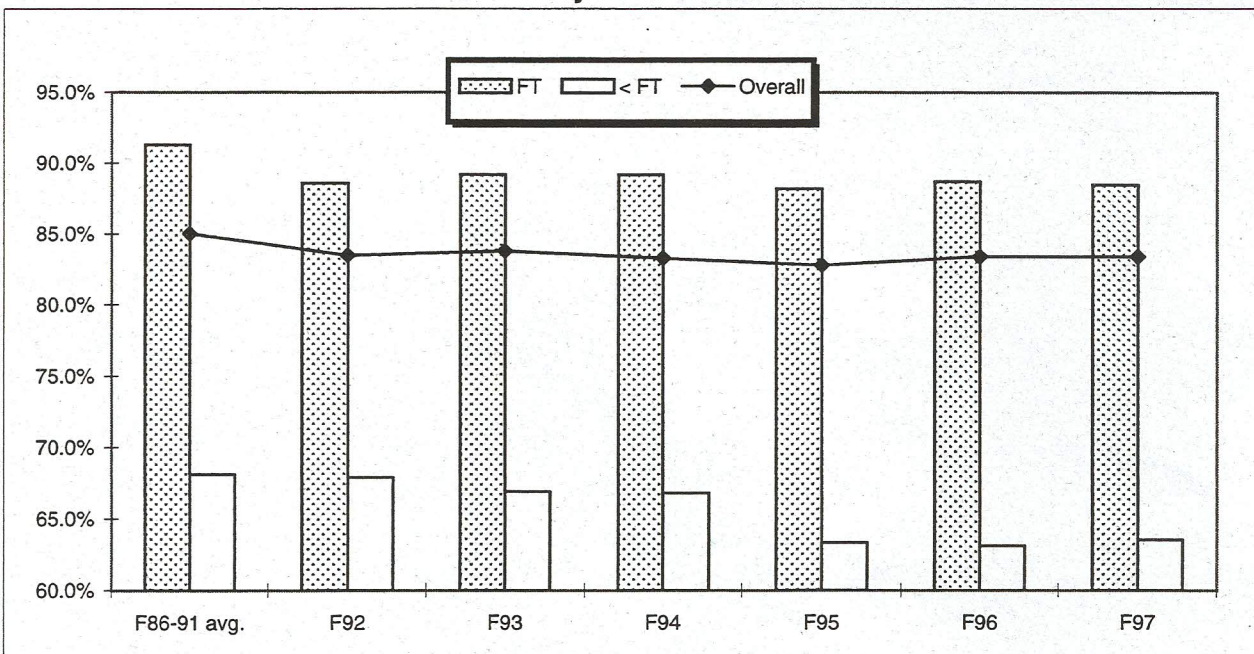
n=	88,555	15,877	14,885	14,784	14,932	15,229	15,732
	F86-91 avg.	F92	F93	F94	F95	F96	F97
Overall	85.0%	83.5%	83.8%	83.3%	82.8%	83.4%	83.4%
By Entry Status							
Beg.	86.4%	84.9%	85.1%	84.6%	84.7%	85.1%	85.0%
Trans.	80.4%	78.0%	78.8%	78.0%	75.4%	76.8%	77.9%
FTB (1)	91.8%	89.3%	89.7%	89.0%	89.1%	89.4%	89.3%
By Student Type							
Trad.	91.8%	88.9%	89.3%	88.7%	88.4%	88.8%	88.9%
N. Maj. (2)	76.8%	74.7%	72.7%	71.1%	70.2%	70.6%	70.2%
By Course Load in the First Fall Semester							
FT	91.3%	88.6%	89.2%	89.2%	88.2%	88.7%	88.5%
< FT	68.1%	67.9%	66.9%	66.8%	63.3%	63.1%	63.5%
By Ethnicity							
Am. Ind.	82.4%	85.4%	84.1%	71.4%	82.4%	77.3%	75.5%
Asian	92.9%	89.3%	90.7%	93.4%	91.3%	94.1%	92.5%
Black	79.1%	75.4%	76.3%	76.9%	78.7%	80.4%	79.6%
Hispanic	84.6%	80.6%	77.8%	81.5%	82.5%	79.6%	84.4%
Other	85.6%	84.0%	84.3%	83.5%	82.9%	83.5%	83.5%

(1) FTB-Full-Time Beginner: "beginner" entry status and entry class code of A1, P1, B1, and B2.

(2) "New Majority" students are defined as freshmen > 22, sophomores > 23, juniors > 24, seniors > 25, or traditional age students who are attending less than full-time.

The graph below illustrates the relationship of course load on persistence to the second semester. The persistence of part-time students to the second semester has dipped with the last two cohorts.

Persistence to the Second Semester by Course Load - IU



Persistence to the Second Semester - IU (cont'd)

n=	88,555	15,877	14,885	14,784	14,932	15,229	15,732
	F86-91 avg.	F92	F93	F94	F95	F96	F97
Overall	85.0%	83.5%	83.8%	83.3%	82.8%	83.4%	83.4%
By Age							
<25	87.2%	85.1%	85.3%	84.8%	84.2%	84.8%	85.1%
25-29	73.0%	72.3%	75.0%	73.4%	72.7%	74.5%	70.7%
30-39	75.4%	77.8%	75.4%	72.9%	73.5%	70.9%	73.7%
>40	70.1%	70.2%	73.3%	70.5%	70.7%	69.2%	68.9%
By Sex							
Male	84.9%	82.9%	83.5%	81.9%	82.0%	82.2%	83.1%
Female	85.6%	83.9%	84.0%	84.2%	83.3%	84.2%	83.6%
By Residency							
Resident	83.7%	82.9%	83.5%	81.9%	82.0%	81.8%	81.9%
Non-Res.	93.6%	83.9%	84.0%	84.2%	83.3%	92.1%	91.4%
By GPA in the First Fall Semester							
3.0 - 4.0	93.3%	92.7%	92.7%	92.6%	92.8%	92.3%	92.7%
2.0 - 2.99	93.7%	92.6%	93.0%	92.4%	92.3%	93.1%	92.2%
< 2.0	61.8%	60.2%	59.4%	59.5%	82.7%	59.3%	58.0%
By SAT Groups							
1400+	95.1%	100.0%	100.0%	95.6%	94.8%	96.5%	95.8%
1200-1399	95.2%	95.7%	95.6%	94.5%	96.7%	94.3%	93.3%
1000-1199	93.9%	92.6%	92.8%	91.8%	91.0%	90.8%	90.4%
800-999	89.5%	88.0%	88.2%	87.7%	88.0%	85.9%	84.4%
600-799	84.2%	79.8%	80.6%	80.6%	80.7%	79.7%	81.5%
400-599	77.8%	75.2%	73.8%	75.3%	78.7%	71.4%	69.4%
No SAT	72.9%	74.9%	75.1%	74.6%	74.3%	75.3%	74.8%

Persistence to the Second Semester by Campus

	F86-91 avg.	F92	F93	F94	F95	F96	F97
IUB	95.0%	94.1%	94.8%	94.1%	94.2%	94.8%	94.4%
IUPUI	78.7%	77.1%	76.3%	76.4%	76.9%	75.6%	76.4%
IUE	73.0%	75.5%	73.9%	70.2%	67.4%	71.9%	72.5%
IPFW	76.5%	72.2%	79.1%	74.6%	74.4%	77.0%	76.5%
IUK	77.1%	75.7%	74.6%	68.9%	72.4%	71.9%	73.5%
IUN	78.3%	78.9%	78.8%	79.3%	78.2%	80.9%	74.8%
IUSB	76.7%	75.8%	73.4%	77.2%	74.0%	76.1%	77.6%
IUS	78.8%	79.0%	77.7%	75.4%	76.8%	78.2%	79.2%

IPFW - IU Students only

The following pages provide campus specific profiles. Please note that the SAT groupings are collapsed to insure adequate representation within the cells. Similarly, the "" designation means that fewer than 10 students were contained in that cell which distorts the use of percentages.

Source Information

University Budget Office	Produced 4/28/98	
Todd Schmitz, Poplars 603	(812) 855-9893	email: schmitz@indiana.edu
Brynne Roberts		email: bryrober@indiana.edu
Maria Blanco-Hilycord		email: mhilycor@indiana.edu

Bloomington

Semester by Semester Retention through Five Semesters

n=	37,371	6,252	5,973	6,178	5,835	5,888	6,166
	F86-91 avg.	F92	F93	F94	F95	F96	F97
Ret. 2nd	95.0%	94.1%	94.8%	94.1%	94.2%	94.8%	94.4%
Ret. 3rd	86.2%	85.8%	86.2%	84.1%	85.1%	86.7%	
Ret. 4th	83.4%	82.2%	81.8%	80.7%	81.4%	82.2%	
Ret. 5th	79.6%	77.1%	78.2%	76.2%	77.4%		

Persistence to the Second Semester

By Entry Status							
Beg.	95.5%	94.5%	95.3%	94.3%	94.9%	95.0%	95.1%
Trans.	91.3%	90.7%	90.9%	92.3%	87.4%	92.1%	88.8%
FTB (1)	95.7%	94.6%	95.4%	94.4%	95.0%	95.2%	95.3%
By Student Type							
Trad.	95.6%	94.4%	95.1%	94.5%	94.5%	95.2%	94.9%
N. Maj. (2)	89.5%	87.7%	84.5%	81.4%	84.6%	82.9%	81.6%
By Course Load in the First Fall Semester							
FT	95.3%	94.2%	95.0%	94.3%	94.4%	95.0%	94.8%
< FT	75.0%	81.9%	73.8%	76.6%	77.5%	74.4%	66.3%
By Ethnicity							
Black	88.2%	80.8%	82.1%	82.3%	88.9%	93.5%	93.1%
Hispanic	92.3%	88.3%	87.7%	91.9%	91.2%	91.3%	96.1%
Other	95.5%	95.0%	95.6%	94.8%	94.5%	94.9%	94.4%
By Age							
<25	95.2%	94.2%	94.9%	94.3%	94.2%	94.9%	94.6%
25-29	82.2%	85.4%	86.3%	76.6%	89.5%	91.8%	85.3%
30-39	82.0%	91.9%	86.1%	84.8%	89.4%	76.2%	84.6%
>40	71.7%	100.0%	**	90.0%	87.5%	81.8%	81.3%
By Sex							
Male	95.0%	94.5%	95.2%	93.7%	94.0%	94.5%	95.1%
Female	95.0%	93.8%	94.4%	94.4%	94.3%	94.9%	93.8%
By Residency							
Resident	94.6%	93.2%	94.1%	93.4%	93.9%	94.7%	94.2%
Non-Res.	96.0%	95.9%	96.7%	95.8%	94.8%	94.9%	94.7%
By GPA in the First Fall Semester							
3.0 - 4.0	98.4%	97.9%	98.4%	98.1%	98.0%	97.7%	97.5%
2.0 - 2.99	97.9%	96.8%	97.2%	96.5%	97.3%	97.0%	96.4%
< 2.0	77.2%	77.8%	79.4%	78.5%	74.9%	80.3%	78.6%
By SAT Groups							
1200+	97.1%	98.2%	97.6%	97.0%	97.7%	96.3%	96.7%
800-1199	96.3%	95.5%	96.1%	95.2%	94.6%	94.7%	94.4%
400-799	92.8%	88.5%	90.2%	89.9%	90.9%	94.8%	90.7%
No SAT	86.2%	88.4%	89.8%	90.0%	91.3%	93.3%	91.2%

** Cell contains fewer than 10 students

(1) FTB-Full-Time Beginner: "beginner" entry status and entry class code of A1, P1, B1, and B2.

(2) "New Majority" students are defined as freshman > 22, sophomores > 23, juniors >24, seniors > 25, or traditional age students who are attending less than full-time.

Indianapolis

Semester by Semester Retention through Five Semesters

n=	20,554	3,670	3,336	3,069	3,802	4,193	4,167
	F86-91 avg.	F92	F93	F94	F95	F96	F97
Ret. 2nd	78.7%	77.1%	76.3%	76.4%	76.9%	75.6%	76.4%
Ret. 3rd	61.0%	56.0%	56.8%	56.8%	58.1%	56.7%	
Ret. 4th	53.8%	49.2%	49.2%	50.0%	50.1%	48.5%	
Ret. 5th	47.6%	42.2%	42.8%	44.7%	45.3%		

Persistence to the Second Semester

By Entry Status							
Beg.	79.6%	76.7%	76.3%	76.9%	77.8%	76.8%	76.2%
Trans.	77.8%	77.8%	76.3%	75.5%	74.9%	73.2%	76.8%
FTB (1)	86.0%	81.3%	81.1%	83.2%	83.8%	83.4%	83.0%
By Student Type							
Trad.	84.1%	79.7%	80.4%	81.7%	82.0%	81.8%	82.5%
N. Maj. (2)	77.1%	75.3%	73.0%	71.5%	71.9%	69.2%	69.4%
By Course Load in the First Fall Semester							
FT	86.0%	82.2%	81.9%	82.8%	83.7%	83.3%	83.1%
< FT	72.2%	70.1%	69.1%	66.3%	65.2%	61.6%	63.1%
By Ethnicity							
Black	73.6%	71.4%	71.9%	75.4%	71.8%	76.4%	78.3%
Hispanic	78.3%	66.7%	66.7%	73.1%	76.4%	74.7%	81.4%
Other	79.7%	77.8%	76.8%	76.5%	77.4%	75.6%	76.1%
By Age							
<25	79.8%	76.9%	76.2%	77.3%	77.0%	76.4%	77.2%
25-29	75.1%	75.6%	76.3%	72.3%	74.3%	75.6%	70.8%
30-39	77.5%	80.4%	77.7%	74.8%	80.0%	68.3%	75.2%
>40	78.6%	76.0%	75.2%	70.3%	71.8%	70.9%	73.5%
By Sex							
Male	77.7%	75.6%	74.8%	73.1%	74.3%	74.0%	74.5%
Female	80.3%	78.2%	77.4%	78.8%	78.8%	76.9%	77.9%
By Residency							
Resident	79.2%	77.0%	76.2%	76.1%	76.6%	75.6%	76.3%
Non-Res.	78.6%	82.7%	82.6%	87.3%	83.2%	78.4%	78.9%
By GPA in the First Fall Semester							
3.0 - 4.0	90.5%	90.1%	87.9%	89.3%	90.9%	87.4%	89.6%
2.0 - 2.99	90.2%	90.7%	89.7%	89.3%	89.0%	89.9%	89.4%
< 2.0	57.7%	55.7%	51.2%	51.3%	50.4%	52.7%	51.0%
By SAT Groups							
1200+	81.3%	68.6%	85.7%	92.3%	81.6%	77.3%	73.4%
800-1199	82.8%	83.0%	80.8%	79.0%	82.2%	81.3%	80.5%
400-799	81.1%	74.3%	74.9%	79.5%	77.8%	75.2%	81.2%
No SAT	72.3%	73.8%	72.9%	72.6%	73.5%	71.5%	72.2%

** Cell contains fewer than 10 students

(1) FTB-Full-Time Beginner: "beginner" entry status and entry class code of A1, P1, B1, and B2.

(2) "New Majority" students are defined as freshman > 22, sophomores > 23, juniors >24, seniors > 25, or traditional age students who are attending less than full-time.

East

Semester by Semester Retention through Five Semesters

n=	2,622	564	522	500	540	506	516
	F86-91 avg.	F92	F93	F94	F95	F96	F97
Ret. 2nd	73.0%	75.5%	73.9%	70.2%	67.4%	71.9%	72.5%
Ret. 3rd	51.5%	52.0%	52.1%	48.4%	48.3%	54.1%	
Ret. 4th	44.7%	45.4%	44.3%	40.4%	39.6%	42.0%	
Ret. 5th	40.6%	38.7%	38.9%	34.6%	31.9%		

Persistence to the Second Semester

By Entry Status							
Beg.	71.9%	76.3%	72.2%	70.9%	66.5%	71.0%	72.7%
Trans.	72.8%	71.7%	83.5%	66.7%	70.1%	75.2%	71.6%
FTB (1)	84.3%	83.3%	81.3%	73.9%	77.4%	76.3%	77.7%
By Student Type							
Trad.	79.8%	79.5%	78.1%	70.3%	75.9%	78.4%	75.2%
N. Maj. (2)	70.1%	73.4%	71.6%	70.2%	62.2%	67.5%	70.4%
By Course Load in the First Fall Semester							
FT	84.4%	83.2%	82.6%	73.2%	77.1%	78.1%	76.3%
< FT	63.0%	65.9%	63.7%	66.2%	56.5%	65.0%	67.6%
By Ethnicity							
Black	60.4%	81.0%	76.5%	69.2%	59.3%	60.0%	86.7%
Hispanic	**	**	**	**	**	**	**
Other	72.2%	75.2%	74.2%	70.2%	67.8%	72.6%	72.1%
By Age							
<25	71.3%	75.0%	73.8%	68.8%	67.6%	72.2%	73.8%
25-29	70.8%	80.8%	79.2%	65.8%	65.2%	69.8%	65.9%
30-39	77.0%	79.7%	75.7%	78.5%	68.4%	74.6%	76.3%
>40	68.3%	66.7%	62.1%	74.3%	63.2%	65.0%	58.8%
By Sex							
Male	68.3%	74.9%	73.2%	69.4%	66.1%	68.3%	72.3%
Female	74.0%	75.8%	74.4%	70.7%	67.8%	73.9%	72.6%
By Residency							
Resident	71.9%	75.7%	73.7%	69.9%	67.7%	71.5%	72.3%
Non-Res.	74.3%	75.0%	83.3%	77.3%	61.5%	79.3%	75.0%
By GPA in the First Fall Semester							
3.0 - 4.0	80.8%	88.7%	88.9%	81.0%	85.3%	89.8%	85.9%
2.0 - 2.99	85.6%	85.2%	87.1%	82.9%	83.6%	86.6%	87.4%
< 2.0	53.5%	57.1%	52.4%	54.1%	41.2%	48.6%	54.3%
By SAT Groups							
1200+	**	**	**	**	**	**	**
800-1199	83.6%	82.3%	78.2%	73.5%	79.8%	82.0%	82.0%
400-799	76.7%	75.4%	75.6%	73.7%	73.0%	77.5%	68.0%
No SAT	66.8%	72.7%	71.1%	67.9%	60.4%	65.2%	68.5%

** Cell contains fewer than 10 students

(1) FTB-Full-Time Beginner: "beginner" entry status and entry class code of A1, P1, B1, and B2.

(2) "New Majority" students are defined as freshman > 22, sophomores > 23, juniors >24, seniors > 25, or traditional age students who are attending less than full-time.

Fort Wayne

Semester by Semester Retention through Five Semesters

n=	6,546	1,104	1,057	1,279	1,235	1,276	1,020
	F86-91 avg.	F92	F93	F94	F95	F96	F97
Ret. 2nd	76.5%	72.2%	79.1%	74.6%	74.4%	77.0%	76.5%
Ret. 3rd	58.8%	55.3%	56.7%	54.6%	56.9%	54.1%	
Ret. 4th	52.1%	49.5%	48.2%	44.3%	46.2%	47.0%	
Ret. 5th	46.7%	42.9%	42.3%	38.8%	42.5%		

Persistence to the Second Semester

By Entry Status							
Beg.	79.0%	72.7%	80.5%	75.5%	77.4%	79.4%	78.7%
Trans.	72.2%	71.2%	76.2%	72.4%	68.2%	72.2%	72.5%
FTB (1)	84.9%	75.8%	85.1%	81.7%	80.8%	84.1%	83.5%
By Student Type							
Trad.	82.5%	75.5%	82.8%	80.8%	79.5%	80.9%	82.6%
N. Maj. (2)	73.5%	69.6%	74.5%	66.4%	67.8%	71.8%	68.3%
By Course Load in the First Fall Semester							
FT	84.8%	76.9%	85.1%	81.9%	80.2%	82.7%	83.6%
< FT	62.8%	63.3%	67.5%	57.2%	61.3%	62.9%	60.1%
By Ethnicity							
Black	69.4%	72.0%	83.8%	66.1%	67.3%	66.2%	73.0%
Hispanic	73.9%	63.6%	93.8%	75.8%	77.3%	71.9%	81.3%
Other	77.0%	72.3%	78.7%	74.5%	74.4%	77.7%	76.6%
By Age							
<25	79.2%	72.2%	79.4%	75.7%	75.8%	78.1%	77.8%
25-29	66.8%	69.8%	74.7%	67.3%	65.0%	76.9%	69.3%
30-39	71.4%	70.8%	77.7%	67.4%	66.3%	73.6%	70.5%
>40	62.0%	81.8%	82.2%	67.3%	76.3%	61.1%	73.5%
By Sex							
Male	76.8%	69.4%	74.5%	72.8%	72.2%	75.4%	74.0%
Female	76.8%	74.0%	82.0%	75.1%	75.4%	78.0%	78.3%
By Residency							
Resident	77.0%	72.3%	79.2%	74.7%	75.0%	77.4%	77.0%
Non-Res.	73.6%	73.1%	76.1%	73.2%	60.4%	69.7%	67.2%
By GPA in the First Fall Semester							
3.0 - 4.0	87.3%	88.0%	86.8%	85.5%	82.6%	84.8%	84.5%
2.0 - 2.99	87.3%	84.5%	90.4%	87.9%	86.9%	89.8%	87.5%
< 2.0	52.4%	42.2%	57.7%	51.7%	52.8%	57.4%	53.7%
By SAT Groups							
1200+	77.9%	90.5%	66.7%	**	90.9%	90.0%	96.4%
800-1199	84.6%	75.5%	82.4%	80.8%	79.9%	82.0%	81.3%
400-799	80.7%	67.6%	76.9%	72.8%	75.2%	76.4%	81.7%
No SAT	65.1%	70.2%	76.7%	67.2%	68.6%	71.9%	70.2%

** Cell contains fewer than 10 students

(1) FTB-Full-Time Beginner: "beginner" entry status and entry class code of A1, P1, B1, and B2.

(2) "New Majority" students are defined as freshman > 22, sophomores > 23, juniors >24, seniors > 25, or traditional age students who are attending less than full-time.

Kokomo

Semester by Semester Retention through Five Semesters

n=	4,027	807	708	668	572	572	616
	F86-91 avg.	F92	F93	F94	F95	F96	F97
Ret. 2nd	77.1%	75.7%	74.6%	68.9%	72.4%	71.9%	73.5%
Ret. 3rd	55.3%	50.7%	50.4%	46.1%	49.7%	48.4%	
Ret. 4th	48.2%	43.5%	40.5%	38.6%	43.4%	40.4%	
Ret. 5th	39.9%	37.4%	33.6%	32.2%	37.1%		

Persistence to the Second Semester

By Entry Status							
Beg.	78.9%	79.1%	76.6%	70.0%	74.8%	73.0%	76.5%
Trans.	68.6%	62.6%	64.7%	64.0%	61.5%	68.0%	65.2%
FTB (1)	87.5%	86.8%	84.2%	76.8%	81.5%	77.8%	78.1%
By Student Type							
Trad.	83.3%	80.2%	79.3%	70.3%	78.1%	73.6%	76.0%
N. Maj. (2)	75.4%	74.3%	71.8%	68.0%	68.2%	70.1%	71.5%
By Course Load in the First Fall Semester							
FT	86.5%	83.5%	83.7%	75.7%	78.9%	76.6%	77.9%
< FT	68.4%	69.1%	64.9%	60.5%	64.0%	62.0%	67.8%
By Ethnicity							
Black	68.3%	70.6%	36.4%	52.9%	84.2%	83.3%	76.9%
Hispanic	79.2%	90.0%	**	90.0%	**	**	**
Other	77.2%	75.6%	75.3%	69.0%	71.8%	71.6%	73.3%
By Age							
<25	78.0%	77.9%	75.3%	67.9%	74.2%	71.3%	75.2%
25-29	74.2%	65.6%	68.6%	78.3%	70.0%	79.3%	62.2%
30-39	75.6%	70.4%	73.5%	70.8%	67.4%	70.0%	68.3%
>40	73.4%	80.0%	75.0%	67.9%	56.7%	80.0%	69.6%
By Sex							
Male	74.1%	71.7%	68.9%	65.8%	71.4%	66.5%	70.2%
Female	78.4%	77.7%	77.5%	70.5%	72.9%	74.5%	75.3%
By Residency							
Resident	77.2%	75.8%	74.6%	69.1%	72.8%	71.9%	73.9%
Non-Res.	61.2%	70.0%	**	54.5%	**	**	63.2%
By GPA in the First Fall Semester							
3.0 - 4.0	87.1%	86.3%	90.6%	85.3%	89.2%	85.6%	89.1%
2.0 - 2.99	88.1%	88.0%	85.0%	84.2%	82.0%	84.8%	81.2%
< 2.0	56.0%	53.1%	49.4%	41.9%	46.5%	38.4%	45.7%
By SAT Groups							
1200+	81.8%	**	**	**	**	**	66.7%
800-1199	81.7%	78.8%	77.9%	76.3%	76.9%	74.8%	78.6%
400-799	82.0%	82.1%	78.7%	63.9%	77.6%	80.8%	76.6%
No SAT	71.5%	68.9%	69.5%	68.2%	67.2%	67.0%	68.9%

** Cell contains fewer than 10 students

(1) FTB-Full-Time Beginner: "beginner" entry status and entry class code of A1, P1, B1, and B2.

(2) "New Majority" students are defined as freshmen > 22, sophomores > 23, juniors >24, seniors > 25, or traditional age students who are attending less than full-time.

Northwest

Semester by Semester Retention through Five Semesters

n=	5,659	1,149	1,095	1,054	904	844	845
	F86-91 avg.	F92	F93	F94	F95	F96	F97
Ret. 2nd	78.3%	78.9%	78.8%	79.3%	78.2%	80.9%	74.8%
Ret. 3rd	59.7%	56.7%	58.4%	60.8%	56.9%	56.9%	
Ret. 4th	53.7%	51.1%	50.5%	52.6%	51.1%	48.2%	
Ret. 5th	47.2%	44.0%	42.0%	46.3%	44.7%		

Persistence to the Second Semester

By Entry Status							
Beg.	78.7%	81.0%	80.1%	80.9%	79.1%	82.0%	75.7%
Trans.	77.3%	71.5%	74.9%	74.4%	75.0%	76.8%	72.2%
FTB (1)	85.3%	86.1%	83.2%	84.8%	81.3%	85.3%	81.4%
By Student Type							
Trad.	84.0%	83.7%	82.8%	82.6%	81.7%	83.6%	79.8%
N. Maj. (2)	74.9%	75.0%	73.7%	75.4%	73.3%	76.9%	68.1%
By Course Load in the First Fall Semester							
FT	85.5%	85.7%	82.9%	83.5%	82.0%	85.0%	80.5%
< FT	66.5%	67.1%	70.5%	69.6%	68.0%	69.1%	60.7%
By Ethnicity							
Black	75.5%	75.7%	79.3%	80.3%	83.1%	83.5%	71.2%
Hispanic	78.1%	77.7%	75.5%	75.0%	78.0%	78.1%	74.4%
Other	79.2%	79.8%	79.0%	79.6%	76.6%	80.6%	76.0%
By Age							
<25	80.1%	81.5%	79.5%	80.3%	78.9%	82.6%	76.2%
25-29	73.2%	71.6%	75.9%	77.0%	80.0%	68.9%	69.2%
30-39	75.7%	75.2%	78.1%	75.3%	62.7%	71.1%	71.4%
>40	68.1%	58.9%	72.0%	73.2%	85.0%	81.6%	62.9%
By Sex							
Male	76.7%	75.6%	75.7%	77.0%	78.2%	75.9%	70.2%
Female	79.6%	80.5%	80.6%	80.4%	78.2%	83.6%	77.0%
By Residency							
Resident	78.4%	79.0%	79.1%	79.5%	78.5%	81.0%	74.8%
Non-Res.	80.4%	66.7%	69.6%	70.8%	63.2%	75.0%	73.3%
By GPA in the First Fall Semester							
3.0 - 4.0	88.6%	87.3%	90.7%	90.2%	90.3%	91.6%	89.7%
2.0 - 2.99	90.6%	92.9%	91.0%	89.7%	88.9%	91.2%	90.7%
< 2.0	59.1%	58.1%	57.4%	59.7%	59.3%	62.9%	52.0%
By SAT Groups							
1200+	89.6%	**	**	**	**	100.0%	61.9%
800-1199	85.8%	84.2%	82.3%	83.3%	83.9%	82.9%	78.5%
400-799	80.9%	80.9%	78.7%	80.7%	79.2%	82.1%	74.6%
No SAT	67.6%	70.5%	72.9%	72.2%	71.0%	75.0%	70.0%

** Cell contains fewer than 10 students

(1) FTB-Full-Time Beginner: "beginner" entry status and entry class code of A1, P1, B1, and B2.

(2) "New Majority" students are defined as freshman > 22, sophomores > 23, juniors >24, seniors > 25, or traditional age students who are attending less than full-time.

South Bend

Semester by Semester Retention through Five Semesters

n=	5,810	1,229	1,138	1,081	1,109	1,015	1,103
	F86-91 avg.	F92	F93	F94	F95	F96	F97
Ret. 2nd	76.7%	75.8%	73.4%	77.2%	74.0%	76.1%	77.6%
Ret. 3rd	56.6%	57.4%	57.6%	56.7%	54.2%	55.3%	
Ret. 4th	51.6%	52.6%	49.6%	50.0%	47.9%	50.0%	
Ret. 5th	47.7%	46.8%	41.0%	44.6%	44.9%		

Persistence to the Second Semester

By Entry Status							
Beg.	77.4%	75.9%	73.2%	77.0%	75.7%	77.3%	77.6%
Trans.	76.1%	75.3%	73.8%	77.3%	69.8%	72.3%	77.6%
FTB (1)	86.1%	83.0%	80.4%	83.8%	81.7%	81.3%	82.6%
By Student Type							
Trad.	83.7%	81.5%	79.6%	82.7%	80.7%	80.1%	82.5%
N. Maj. (2)	73.5%	71.3%	67.4%	71.7%	66.3%	71.2%	71.6%
By Course Load in the First Fall Semester							
FT	86.3%	82.8%	80.7%	83.2%	82.2%	80.4%	83.3%
< FT	63.0%	64.0%	62.3%	66.1%	56.5%	66.8%	63.8%
By Ethnicity							
Black	71.4%	64.7%	59.4%	70.5%	76.3%	74.2%	72.7%
Hispanic	76.6%	77.8%	60.0%	57.9%	74.1%	69.2%	70.0%
Other	77.3%	76.2%	74.5%	77.7%	73.9%	76.4%	78.1%
By Age							
<25	78.6%	77.9%	74.7%	77.8%	75.1%	76.8%	79.3%
25-29	71.5%	61.0%	71.2%	77.8%	68.3%	71.6%	68.7%
30-39	71.9%	81.6%	70.2%	71.8%	68.9%	77.9%	76.3%
>40	70.5%	58.6%	64.7%	70.7%	74.4%	62.5%	67.4%
By Sex							
Male	76.7%	72.9%	73.7%	74.6%	73.4%	73.4%	76.8%
Female	77.2%	77.5%	73.2%	78.4%	74.5%	77.6%	78.1%
By Residency							
Resident	77.0%	74.9%	73.7%	77.2%	74.6%	76.4%	77.3%
Non-Res.	77.0%	82.7%	70.4%	76.7%	66.7%	71.8%	81.1%
By GPA in the First Fall Semester							
3.0 - 4.0	86.7%	87.8%	85.2%	85.6%	83.7%	89.6%	89.3%
2.0 - 2.99	89.8%	86.8%	87.5%	90.8%	88.3%	89.8%	88.4%
< 2.0	55.8%	50.4%	49.9%	57.1%	55.7%	55.6%	57.6%
By SAT Groups							
1200+	85.7%	**	100.0%	75.0%	100.0%	85.7%	75.6%
800-1199	85.6%	79.4%	80.7%	82.7%	73.8%	83.1%	80.1%
400-799	80.2%	83.0%	74.0%	79.8%	79.8%	72.9%	81.2%
No SAT	70.9%	71.4%	68.9%	72.9%	72.3%	70.8%	74.4%

** Cell contains fewer than 10 students

- (1) FTB-Full-Time Beginner: "beginner" entry status and entry class code of A1, P1, B1, and B2.
 (2) "New Majority" students are defined as freshmen > 22, sophomores > 23, juniors >24, seniors > 25, or traditional age students who are attending less than full-time.

Southeast

Semester by Semester Retention through Five Semesters

n=	5,966	1,102	1,056	954	935	935	986
	F86-91 avg.	F92	F93	F94	F95	F96	F97
Ret. 2nd	78.8%	79.0%	77.7%	75.4%	76.8%	78.2%	79.2%
Ret. 3rd	59.1%	55.8%	54.5%	53.5%	57.9%	60.3%	
Ret. 4th	51.6%	46.6%	48.6%	46.5%	50.9%	54.7%	
Ret. 5th	47.6%	41.9%	43.9%	43.8%	44.4%		

Persistence to the Second Semester

By Entry Status							
Beg.	78.2%	79.5%	77.7%	75.3%	76.4%	77.8%	79.3%
Trans.	81.4%	76.4%	77.8%	75.5%	76.8%	81.3%	78.8%
FTB (1)	87.7%	85.7%	84.5%	80.6%	83.9%	86.3%	85.6%
By Student Type							
Trad.	83.3%	82.3%	82.9%	79.8%	81.9%	86.0%	86.0%
N. Maj. (2)	76.5%	76.3%	71.9%	69.8%	69.6%	65.9%	69.5%
By Course Load in the First Fall Semester							
FT	87.7%	85.6%	84.8%	81.0%	83.2%	86.4%	85.8%
< FT	63.4%	66.0%	62.6%	61.6%	62.2%	58.2%	64.5%
By Ethnicity							
Black	73.4%	82.4%	77.4%	61.1%	76.0%	71.4%	71.4%
Hispanic	**	**	71.4%	80.0%	**	**	**
Other	78.6%	78.9%	77.8%	75.5%	76.5%	78.2%	79.5%
By Age							
<25	81.4%	81.2%	80.0%	77.0%	78.4%	81.1%	82.3%
25-29	68.4%	72.0%	69.3%	74.1%	72.7%	58.1%	68.5%
30-39	73.3%	75.8%	65.9%	65.0%	70.8%	66.7%	67.1%
>40	61.5%	62.9%	73.5%	64.1%	51.5%	63.4%	61.7%
By Sex							
Male	77.7%	78.2%	79.5%	71.2%	72.7%	75.7%	78.1%
Female	79.1%	79.5%	76.4%	78.1%	79.1%	79.9%	79.9%
By Residency							
Resident	78.7%	79.2%	78.2%	76.0%	76.8%	78.0%	79.5%
Non-Res.	65.9%	72.4%	62.1%	42.1%	77.3%	87.0%	74.1%
By GPA in the First Fall Semester							
3.0 - 4.0	87.5%	87.2%	89.8%	87.3%	91.9%	89.4%	90.8%
2.0 - 2.99	91.4%	88.4%	87.8%	90.0%	90.6%	91.9%	89.4%
< 2.0	57.8%	63.6%	55.3%	54.3%	48.0%	51.7%	54.5%
By SAT Groups							
1200+	91.1%	**	86.7%	90.0%	**	95.0%	90.3%
800-1199	89.1%	87.8%	86.6%	82.3%	86.6%	88.1%	85.9%
400-799	85.1%	79.4%	80.8%	79.4%	78.7%	75.7%	80.2%
No SAT	69.1%	73.0%	68.6%	66.9%	69.9%	66.5%	71.7%

** Cell contains fewer than 10 students

(1) FTB-Full-Time Beginner: "beginner" entry status and entry class code of A1, P1, B1, and B2.

(2) "New Majority" students are defined as freshman > 22, sophomores > 23, juniors >24, seniors > 25, or traditional age students who are attending less than full-time.