



This report provides views on persistence to the second semester for the incoming full-time, beginner cohorts of 1997, 1998, and 1999. Consistent with the new cohort logic, students are defined to a cohort based upon their entry semester/status (fall or either previous summer session/degree-seeking beginner or transfer) and/or by their high school graduation date when appropriate.

As introduced in report 9.1, several new variables have been added to the report. The proportion of the incoming overall and beginner cohorts represented by the FTB subset is portrayed by percentages. This figure speaks to the composition of the cohorts at IUPUI and the regional campuses, and has been proposed as a new data element collected by IPEDS. Four levels of persistence by high school rank is provided as well as figures for the top five reported high schools. The raw cohort figures contained on these pages can become small when disaggregated by different variables. To protect student privacy, cells with a "began" number of ten or less are masked.

Summary views on the entire beginner cohorts and part-time beginner cohort subsets are available as an addendum to this report. Please contact us if you would like to receive a copy of this report. As always, your comments and suggestions are welcomed.

Persistence to the Second Semester by Cohort Status

	97 Cohort			98 Cohort			99 Cohort		
	began	ret'd	%	began	ret'd	%	began	ret'd	%
Beginner	13,504	11,495	85.1%	14,858	12,699	85.5%	14,309	12,169	85.0%
Transfer	3,632	2,837	78.1%	3,537	2,743	77.6%	3,391	2,657	78.4%
Overall	17,136	14,332	83.6%	18,395	15,442	83.9%	17,700	14,826	83.8%

Full-Time Beginners Only (FTB)

	97 Cohort			98 Cohort			99 Cohort		
	began	ret'd	%	began	ret'd	%	began	ret'd	%
FTB	11,321	10,128	89.5%	12,664	11,336	89.5%	12,252	10,893	88.9%
FTB as % of Beginners	83.8%	88.1%		85.2%	89.3%		85.6%	89.5%	
FTB as % of Overall	66.1%	70.7%		68.8%	73.4%		69.2%	73.5%	

Part-Time Beginners Only (PTB)

	97 Cohort			98 Cohort			99 Cohort		
	began	ret'd	%	began	ret'd	%	began	ret'd	%
PTB	2,183	1,367	62.6%	2,194	1,363	62.1%	2,056	1,276	62.1%
PTB as % of Beginners	16.2%	11.9%		14.8%	10.7%		14.4%	10.5%	
PTB as % of Overall	12.7%	9.5%		11.9%	8.8%		11.6%	8.6%	

Source Information

Todd Schmitz, Dir. Reporting & Research	Student Information and Fiscal Svcs.
Kyle Venis, Research Graduate Assistant	Student Information and Fiscal Svcs.
Poplars 018 : (812) 855-9893 http://www.indiana.edu/~urr	

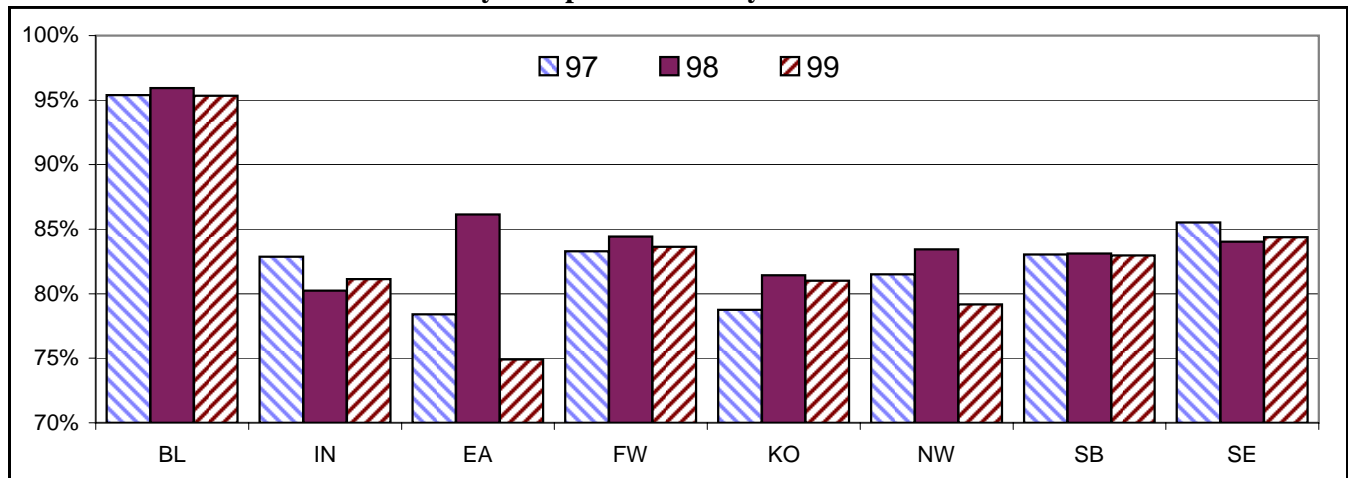
IU

Persistence to the Second Semester - Full-Time Beginners Only (FTB)

	97 Cohort			98 Cohort			99 Cohort		
	began	ret'd	%	began	ret'd	%	began	ret'd	%
FTB	11,321	10,128	89.5%	12,664	11,336	89.5%	12,252	10,893	88.9%
By Ethnicity									
Black	734	635	86.5%	828	704	85.0%	818	702	85.8%
Hispanic	233	207	88.8%	264	236	89.4%	249	212	85.1%
Other	10,354	9,286	89.7%	11,572	10,396	89.8%	11,185	9,979	89.2%
Students By Age									
<25	11,003	9,883	89.8%	12,339	11,075	89.8%	11,957	10,677	89.3%
25-29	143	108	75.5%	183	137	74.9%	150	114	76.0%
30-39	123	97	78.9%	98	84	85.7%	91	66	72.5%
>40	52	40	76.9%	43	39	90.7%	44	30	68.2%
By Sex									
Male	4,684	4,172	89.1%	5,478	4,876	89.0%	5,034	4,429	88.0%
Female	6,637	5,956	89.7%	7,186	6,460	89.9%	7,218	6,464	89.6%
By Residency									
Resident	9,397	8,307	88.4%	10,443	9,221	88.3%	10,022	8,784	87.6%
Non-Res.	1,924	1,821	94.6%	2,221	2,115	95.2%	2,230	2,109	94.6%
By High School Rank									
Top 10%	1,616	1,564	96.8%	1,717	1,651	96.2%	1,648	1,578	95.8%
11%-25%	2,647	2,468	93.2%	2,841	2,669	93.9%	2,766	2,588	93.6%
26%-50%	3,558	3,181	89.4%	3,978	3,577	89.9%	3,840	3,485	90.8%
Bot 50%	2,301	1,881	81.7%	2,864	2,350	82.1%	2,590	2,067	79.8%
By GPA in the First Fall Semester									
3.0 - 4.0	4,449	4,324	97.2%	4,965	4,842	97.5%	5,047	4,902	97.1%
2.0 - 2.99	4,222	4,032	95.5%	4,758	4,539	95.4%	4,402	4,206	95.5%
< 2.0	2,649	1,772	66.9%	2,941	1,955	66.5%	2,803	1,785	63.7%
By SAT Groups									
1200+	1,688	1,609	95.3%	1,978	1,893	95.7%	1,821	1,730	95.0%
800-1199	6,939	6,280	90.5%	7,685	6,980	90.8%	7,291	6,603	90.6%
400-799	795	677	85.2%	772	637	82.5%	883	738	83.6%
By Top Five Attended High Schools (a)									
1	188	173	92.0%	231	212	91.8%	212	195	92.0%
2	133	129	97.0%	137	127	92.7%	144	134	93.1%
3	121	100	82.6%	170	133	78.2%	142	120	84.5%
4	193	180	93.3%	207	192	92.8%	209	190	90.9%
5	216	151	69.9%	201	134	66.7%	230	141	61.3%

(a) 1-Carmel HS, 2- Center Grove HS, 3-Ben Davis HS, 4-North Central HS, 5-In-State GED.

Persistence to the Second Semester by Campus - FTB Only



Bloomington

Persistence to the Second Semester by Cohort Status

	97 Cohort			98 Cohort			99 Cohort		
	began	ret'd	%	began	ret'd	%	began	ret'd	%
Beginner	6,102	5,810	95.2%	6,810	6,515	95.7%	6,583	6,260	95.1%
Transfer	737	655	88.9%	638	583	91.4%	671	615	91.7%
Overall	6,839	6,465	94.5%	7,448	7,098	95.3%	7,254	6,875	94.8%

Full-Time Beginners Only (FTB)

	97 Cohort			98 Cohort			99 Cohort		
	began	ret'd	%	began	ret'd	%	began	ret'd	%
FTB	6,042	5,764	95.4%	6,748	6,473	95.9%	6,519	6,215	95.3%
FTB as % of Beginners	99.0%	99.2%		99.1%	99.4%		99.0%	99.3%	
FTB as % of Overall	88.3%	89.2%		90.6%	91.2%		89.9%	90.4%	
By Ethnicity									
Black	242	230	95.0%	276	263	95.3%	324	306	94.4%
Hispanic	117	111	94.9%	132	127	96.2%	115	109	94.8%
Other	5,683	5,423	95.4%	6,340	6,083	95.9%	6,080	5,800	95.4%
Students By Age									
<25	6,013	5,737	95.4%	6,711	6,447	96.1%	6,493	6,198	95.5%
25-29	14	12	85.7%	22	13	59.1%	18	14	77.8%
30-39	12	12	100.0%	**	**	88.9%	**	**	37.5%
>40	**	**	100.0%	**	**	83.3%	**	**	n/a
By Sex									
Male	2,543	2,441	96.0%	2,935	2,817	96.0%	2,685	2,559	95.3%
Female	3,499	3,323	95.0%	3,813	3,656	95.9%	3,834	3,656	95.4%
By Residency									
Resident	4,216	4,017	95.3%	4,698	4,502	95.8%	4,467	4,250	95.1%
Non-Res.	1,826	1,747	95.7%	2,050	1,971	96.1%	2,052	1,965	95.8%
By High School Rank									
Top 10%	1,283	1,256	97.9%	1,331	1,301	97.7%	1,260	1,232	97.8%
11%-25%	1,801	1,723	95.7%	1,936	1,861	96.1%	1,876	1,796	95.7%
26%-50%	1,940	1,825	94.1%	2,258	2,147	95.1%	2,240	2,114	94.4%
Bot 50%	380	352	92.6%	537	510	95.0%	406	378	93.1%
By GPA in the First Fall Semester									
3.0 - 4.0	2,807	2,751	98.0%	3,228	3,188	98.8%	3,222	3,162	98.1%
2.0 - 2.99	2,375	2,304	97.0%	2,636	2,578	97.8%	2,462	2,402	97.6%
< 2.0	860	709	82.4%	884	707	80.0%	835	651	78.0%
By SAT Groups									
1200+	1,456	1,412	97.0%	1,644	1,607	97.7%	1,541	1,490	96.7%
800-1199	3,848	3,662	95.2%	4,167	3,991	95.8%	4,056	3,873	95.5%
400-799	116	105	90.5%	122	117	95.9%	128	119	93.0%
By Top Five Attended High Schools (a)									
1	94	88	93.6%	122	114	93.4%	104	101	97.1%
2	131	130	99.2%	129	126	97.7%	129	126	97.7%
3	126	123	97.6%	146	143	97.9%	142	137	96.5%
4	102	96	94.1%	94	86	91.5%	85	80	94.1%
5	67	66	98.5%	75	72	96.0%	72	72	100.0%

(a) 1-Bloomington South HS, 2- North Central HS, 3-Carmel HS, 4-Bloomington North HS, 5-Center Grove HS.

** Began cell contains 10 or fewer students.

IUPUI

Persistence to the Second Semester by Cohort Status

	97 Cohort			98 Cohort			99 Cohort		
	began	ret'd	%	began	ret'd	%	began	ret'd	%
Beginner	3,027	2,308	76.2%	3,545	2,664	75.1%	3,455	2,602	75.3%
Transfer	1,438	1,109	77.1%	1,390	1,041	74.9%	1,332	1,003	75.3%
Overall	4,465	3,417	76.5%	4,935	3,705	75.1%	4,787	3,605	75.3%

Full-Time Beginners Only (FTB)

	97 Cohort			98 Cohort			99 Cohort		
	began	ret'd	%	began	ret'd	%	began	ret'd	%
FTB	2,154	1,785	82.9%	2,576	2,067	80.2%	2,559	2,076	81.1%
FTB as % of Beginners	71.2%	77.3%		72.7%	77.6%		74.1%	79.8%	
FTB as % of Overall	48.2%	52.2%		52.2%	55.8%		53.5%	57.6%	
By Ethnicity									
Black	263	221	84.0%	308	241	78.2%	292	238	81.5%
Hispanic	26	23	88.5%	26	22	84.6%	36	28	77.8%
Other	1,865	1,541	82.6%	2,242	1,804	80.5%	2,231	1,810	81.1%
Students By Age									
<25	2,050	1,705	83.2%	2,450	1,970	80.4%	2,454	2,007	81.8%
25-29	53	41	77.4%	74	55	74.3%	51	34	66.7%
30-39	39	30	76.9%	40	30	75.0%	34	23	67.6%
>40	12	9	75.0%	12	12	100.0%	16	11	68.8%
By Sex									
Male	957	780	81.5%	1,188	953	80.2%	1,143	905	79.2%
Female	1,197	1,005	84.0%	1,388	1,114	80.3%	1,416	1,171	82.7%
By Residency									
Resident	2,126	1,763	82.9%	2,528	2,023	80.0%	2,505	2,030	81.0%
Non-Res.	28	22	78.6%	48	44	91.7%	54	46	85.2%
By High School Rank									
Top 10%	136	121	89.0%	152	136	89.5%	167	148	88.6%
11%-25%	292	261	89.4%	359	319	88.9%	373	329	88.2%
26%-50%	632	538	85.1%	724	588	81.2%	702	609	86.8%
Bot 50%	885	710	80.2%	1,119	863	77.1%	1,057	825	78.1%
By GPA in the First Fall Semester									
3.0 - 4.0	650	635	97.7%	729	696	95.5%	753	720	95.6%
2.0 - 2.99	763	718	94.1%	912	845	92.7%	891	836	93.8%
< 2.0	741	432	58.3%	935	526	56.3%	915	520	56.8%
By SAT Groups									
1200+	104	88	84.6%	123	108	87.8%	116	95	81.9%
800-1199	1,207	1,027	85.1%	1,487	1,242	83.5%	1,477	1,244	84.2%
400-799	253	222	87.7%	289	223	77.2%	298	242	81.2%
By Top Five Attended High Schools (a)									
1	68	59	86.8%	68	61	89.7%	64	52	81.3%
2	66	63	95.5%	62	55	88.7%	72	62	86.1%
3	93	74	79.6%	142	107	75.4%	110	88	80.0%
4	69	56	81.2%	64	50	78.1%	95	77	81.1%
5	96	65	67.7%	91	54	59.3%	90	44	48.9%

(a) 1-Perry Meridian HS, 2- Center Grove HS, 3-Ben Davis HS, 4-Warren Central HS, 5- In-State GED

** Began cell contains 10 or fewer students.

East

Persistence to the Second Semester by Cohort Status

	97 Cohort			98 Cohort			99 Cohort		
	began	ret'd	%	began	ret'd	%	began	ret'd	%
Beginner	465	341	73.3%	387	287	74.2%	420	283	67.4%
Transfer	97	69	71.1%	123	90	73.2%	99	71	71.7%
Overall	562	410	73.0%	510	377	73.9%	519	354	68.2%

Full-Time Beginners Only (FTB)

	97 Cohort			98 Cohort			99 Cohort		
	began	ret'd	%	began	ret'd	%	began	ret'd	%
FTB	278	218	78.4%	231	199	86.1%	251	188	74.9%
FTB as % of Beginners	59.8%	63.9%		59.7%	69.3%		59.8%	66.4%	
FTB as % of Overall	49.5%	53.2%		45.3%	52.8%		48.4%	53.1%	
By Ethnicity									
Black	**	**	100.0%	10	10	100.0%	14	10	71.4%
Hispanic	**	**	100.0%	**	**	100.0%	**	**	100.0%
Other	268	208	77.6%	219	187	85.4%	236	177	75.0%
Students By Age									
<25	251	201	80.1%	210	179	85.2%	221	165	74.7%
25-29	13	10	76.9%	**	**	100.0%	17	16	94.1%
30-39	13	7	53.8%	11	10	90.9%	10	6	60.0%
>40	**	**	0.0%	**	**	100.0%	**	**	33.3%
By Sex									
Male	85	72	84.7%	84	72	85.7%	92	66	71.7%
Female	193	146	75.6%	147	127	86.4%	159	122	76.7%
By Residency									
Resident	266	209	78.6%	222	192	86.5%	243	182	74.9%
Non-Res.	12	9	75.0%	**	**	77.8%	**	**	75.0%
By High School Rank									
Top 10%	10	8	80.0%	**	**	100.0%	**	**	75.0%
11%-25%	43	39	90.7%	26	22	84.6%	28	24	85.7%
26%-50%	84	65	77.4%	77	65	84.4%	59	51	86.4%
Bot 50%	97	73	75.3%	84	73	86.9%	93	61	65.6%
By GPA in the First Fall Semester									
3.0 - 4.0	89	83	93.3%	85	83	97.6%	84	81	96.4%
2.0 - 2.99	69	64	92.8%	74	68	91.9%	69	66	95.7%
< 2.0	120	71	59.2%	72	48	66.7%	98	41	41.8%
By SAT Groups									
1200+	**	**	83.3%	**	**	80.0%	**	**	87.5%
800-1199	135	114	84.4%	105	94	89.5%	80	65	81.3%
400-799	39	30	76.9%	29	25	86.2%	28	22	78.6%
By Top Five Attended High Schools (a)									
1	36	28	77.8%	40	34	85.0%	58	41	70.7%
2	47	39	83.0%	27	23	85.2%	23	17	73.9%
3	24	23	95.8%	20	20	100.0%	21	16	76.2%
4	18	14	77.8%	**	**	100.0%	16	11	68.8%
5	17	13	76.5%	**	**	100.0%	17	10	58.8%

(a) 1-Richmond HS, 2- Connersville Senior HS, 3-Centerville Senior HS, 4-Union County HS, 5-In-State GED

** Began cell contains 10 or fewer students.

Fort Wayne

Persistence to the Second Semester by Cohort Status

	97 Cohort			98 Cohort			99 Cohort		
	began	ret'd	%	began	ret'd	%	began	ret'd	%
Beginner	976	764	78.3%	973	782	80.4%	911	723	79.4%
Transfer	470	340	72.3%	488	344	70.5%	372	267	71.8%
Overall	1,446	1,104	76.3%	1,461	1,126	77.1%	1,283	990	77.2%

Full-Time Beginners Only (FTB)

	97 Cohort			98 Cohort			99 Cohort		
	began	ret'd	%	began	ret'd	%	began	ret'd	%
FTB	760	633	83.3%	777	656	84.4%	733	613	83.6%
FTB as % of Beginners	77.9%	82.9%		79.9%	83.9%		80.5%	84.8%	
FTB as % of Overall	52.6%	57.3%		53.2%	58.3%		57.1%	61.9%	
By Ethnicity									
Black	35	28	80.0%	31	25	80.6%	24	17	70.8%
Hispanic	20	15	75.0%	14	10	71.4%	18	17	94.4%
Other	705	590	83.7%	732	621	84.8%	691	579	83.8%
Students By Age									
<25	732	608	83.1%	748	631	84.4%	709	595	83.9%
25-29	12	10	83.3%	15	12	80.0%	14	9	64.3%
30-39	**	**	100.0%	**	**	100.0%	**	**	100.0%
>40	**	**	83.3%	**	**	75.0%	**	**	100.0%
By Sex									
Male	316	244	77.2%	352	293	83.2%	310	258	83.2%
Female	444	389	87.6%	425	363	85.4%	423	355	83.9%
By Residency									
Resident	747	627	83.9%	734	620	84.5%	712	596	83.7%
Non-Res.	13	6	46.2%	43	36	83.7%	21	17	81.0%
By High School Rank									
Top 10%	35	33	94.3%	47	43	91.5%	40	33	82.5%
11%-25%	127	111	87.4%	128	113	88.3%	117	103	88.0%
26%-50%	243	202	83.1%	222	190	85.6%	189	165	87.3%
Bot 50%	287	231	80.5%	297	242	81.5%	307	248	80.8%
By GPA in the First Fall Semester									
3.0 - 4.0	249	227	91.2%	229	215	93.9%	246	231	93.9%
2.0 - 2.99	284	266	93.7%	301	283	94.0%	242	222	91.7%
< 2.0	226	140	61.9%	247	158	64.0%	245	160	65.3%
By SAT Groups									
1200+	28	26	92.9%	49	41	83.7%	45	39	86.7%
800-1199	529	441	83.4%	525	442	84.2%	449	375	83.5%
400-799	75	64	85.3%	60	52	86.7%	99	88	88.9%
By Top Five Attended High Schools (a)									
1	48	36	75.0%	54	43	79.6%	45	35	77.8%
2	50	46	92.0%	51	44	86.3%	35	34	97.1%
3	39	31	79.5%	45	39	86.7%	42	35	83.3%
4	43	35	81.4%	34	29	85.3%	25	20	80.0%
5	46	41	89.1%	38	34	89.5%	28	23	82.1%

(a) 1- R Nelson Snider HS, 2- Northrop HS, 3-Homestead HS, 4-North Side HS, 5-Carroll HS.

** Began cell contains 10 or fewer students.

Fort Wayne - IU Students only

Kokomo

Persistence to the Second Semester by Cohort Status

	97 Cohort			98 Cohort			99 Cohort		
	began	ret'd	%	began	ret'd	%	began	ret'd	%
Beginner	501	385	76.8%	505	386	76.4%	434	345	79.5%
Transfer	165	108	65.5%	140	104	74.3%	130	96	73.8%
Overall	666	493	74.0%	645	490	76.0%	564	441	78.2%

Full-Time Beginners Only (FTB)

	97 Cohort			98 Cohort			99 Cohort		
	began	ret'd	%	began	ret'd	%	began	ret'd	%
FTB	306	241	78.8%	334	272	81.4%	295	239	81.0%
FTB as % of Beginners	61.1%	62.6%		66.1%	70.5%		68.0%	69.3%	
FTB as % of Overall	45.9%	48.9%		51.8%	55.5%		52.3%	54.2%	
By Ethnicity									
Black	**	**	88.9%	**	**	50.0%	**	**	100.0%
Hispanic	**	**	50.0%	**	**	100.0%	**	**	100.0%
Other	295	232	78.6%	325	264	81.2%	289	233	80.6%
Students By Age									
<25	296	234	79.1%	322	261	81.1%	287	233	81.2%
25-29	**	**	57.1%	**	**	87.5%	**	**	100.0%
30-39	**	**	100.0%	**	**	100.0%	**	**	100.0%
>40	**	**	100.0%	**	**	100.0%	**	**	33.0%
By Sex									
Male	102	80	78.4%	103	74	71.8%	83	66	79.5%
Female	204	161	78.9%	231	198	85.7%	212	173	81.6%
By Residency									
Resident	302	238	78.8%	332	272	81.9%	293	237	80.9%
Non-Res.	**	**	75.0%	**	**	0.0%	**	**	100.0%
By High School Rank									
Top 10%	16	14	87.5%	19	18	94.7%	14	11	78.6%
11%-25%	55	42	76.4%	67	64	95.5%	63	54	85.7%
26%-50%	116	93	80.2%	118	100	84.7%	110	87	79.1%
Bot 50%	109	86	78.9%	120	84	70.0%	88	71	80.7%
By GPA in the First Fall Semester									
3.0 - 4.0	107	101	94.4%	116	110	94.8%	123	113	91.9%
2.0 - 2.99	114	97	85.1%	123	113	91.9%	112	101	90.2%
< 2.0	85	43	50.6%	95	49	51.6%	60	25	41.7%
By SAT Groups									
1200+	13	10	76.9%	15	11	73.3%	**	**	77.8%
800-1199	185	145	78.4%	205	177	86.3%	185	154	83.2%
400-799	26	19	73.1%	25	17	68.0%	35	29	82.9%
By Top Five Attended High Schools (a)									
1	51	40	78.4%	69	57	82.6%	32	27	84.4%
2	18	14	77.8%	12	11	91.7%	16	14	87.5%
3	21	20	95.2%	29	23	79.3%	28	20	71.4%
4	24	22	91.7%	14	10	71.4%	13	8	61.5%
5	19	15	78.9%	13	11	84.6%	19	16	84.2%

(a) 1-Kokomo HS, 2- Taylor Jr-Sr HS, 3-Western HS, 4-Logansport HS, 5-Northwestern HS.

** Began cell contains 10 or fewer students.

Northwest

Persistence to the Second Semester by Cohort Status

	97 Cohort			98 Cohort			99 Cohort		
	began	ret'd	%	began	ret'd	%	began	ret'd	%
Beginner	687	518	75.4%	674	534	79.2%	680	526	77.4%
Transfer	219	159	72.6%	188	146	77.7%	209	160	76.6%
Overall	906	677	74.7%	862	680	78.9%	889	686	77.2%

Full-Time Beginners Only (FTB)

	97 Cohort			98 Cohort			99 Cohort		
	began	ret'd	%	began	ret'd	%	began	ret'd	%
FTB	508	414	81.5%	537	448	83.4%	538	426	79.2%
FTB as % of Beginners	73.9%	79.9%		79.7%	83.9%		79.1%	81.0%	
FTB as % of Overall	56.1%	61.2%		62.3%	65.9%		60.5%	62.1%	
By Ethnicity									
Black	119	95	79.8%	135	114	84.4%	113	88	77.9%
Hispanic	52	44	84.6%	53	43	81.1%	60	44	73.3%
Other	337	275	81.6%	349	291	83.4%	365	294	80.5%
Students By Age									
<25	476	392	82.4%	513	427	83.2%	511	405	79.3%
25-29	17	12	70.6%	14	11	78.6%	18	15	83.3%
30-39	**	**	55.6%	**	**	100.0%	**	**	83.3%
>40	**	**	83.3%	**	**	100.0%	**	**	33.0%
By Sex									
Male	168	130	77.4%	190	153	80.5%	195	147	75.4%
Female	340	284	83.5%	347	295	85.0%	343	279	81.3%
By Residency									
Resident	504	411	81.5%	534	445	83.3%	532	423	79.5%
Non-Res.	**	**	75.0%	**	**	100.0%	**	**	50.0%
By High School Rank									
Top 10%	39	37	94.9%	57	52	91.2%	44	42	95.5%
11%-25%	103	86	83.5%	79	71	89.9%	78	72	92.3%
26%-50%	160	134	83.8%	138	115	83.3%	163	131	80.4%
Bot 50%	168	131	78.0%	212	170	80.2%	215	154	71.6%
By GPA in the First Fall Semester									
3.0 - 4.0	122	120	98.4%	134	128	95.5%	137	129	94.2%
2.0 - 2.99	174	167	96.0%	199	178	89.4%	185	169	91.4%
< 2.0	212	127	59.9%	204	142	69.6%	216	128	59.3%
By SAT Groups									
1200+	18	13	72.2%	26	22	84.6%	22	20	90.9%
800-1199	304	256	84.2%	332	285	85.8%	300	252	84.0%
400-799	105	84	80.0%	114	89	78.1%	145	110	75.9%
By Top Five Attended High Schools (a)									
1	57	47	82.5%	41	32	78.0%	55	42	76.4%
2	34	29	85.3%	48	39	81.3%	43	37	86.0%
3	35	29	82.9%	37	32	86.5%	31	27	87.1%
4	32	27	84.4%	35	33	94.3%	41	37	90.2%
5	23	22	95.7%	23	19	82.6%	21	18	85.7%

(a) 1-Portage HS, 2- Merrillville Sr HS, 3-Hobart HS, 4-Lake Central HS, 5-Lew Wallace HS

** Began cell contains 10 or fewer students.

South Bend

Persistence to the Second Semester by Cohort Status

	97 Cohort			98 Cohort			99 Cohort		
	began	ret'd	%	began	ret'd	%	began	ret'd	%
Beginner	843	656	77.8%	984	766	77.8%	870	691	79.4%
Transfer	339	264	77.9%	345	258	74.8%	313	233	74.4%
Overall	1,182	920	77.8%	1,329	1,024	77.1%	1,183	924	78.1%

Full-Time Beginners Only (FTB)

	97 Cohort			98 Cohort			99 Cohort		
	began	ret'd	%	began	ret'd	%	began	ret'd	%
FTB	631	524	83.0%	734	610	83.1%	640	531	83.0%
FTB as % of Beginners	74.9%	79.9%		74.6%	79.6%		73.6%	76.8%	
FTB as % of Overall	53.4%	57.0%		55.2%	59.6%		54.1%	57.5%	
By Ethnicity									
Black	41	32	78.0%	49	39	79.6%	35	29	82.9%
Hispanic	11	9	81.8%	24	21	87.5%	11	6	54.5%
Other	579	483	83.4%	661	550	83.2%	594	496	83.5%
Students By Age									
<25	574	481	83.8%	679	566	83.4%	597	496	83.1%
25-29	19	13	68.4%	34	25	73.5%	17	14	82.4%
30-39	27	21	77.8%	13	12	92.3%	14	11	78.6%
>40	11	9	81.8%	**	**	87.5%	11	9	81.8%
By Sex									
Male	247	205	83.0%	306	249	81.4%	256	202	78.9%
Female	384	319	83.1%	428	361	84.3%	384	329	85.7%
By Residency									
Resident	605	502	83.0%	711	591	83.1%	614	510	83.1%
Non-Res.	26	22	84.6%	23	19	82.6%	26	21	80.8%
By High School Rank									
Top 10%	39	37	94.9%	46	40	87.0%	37	31	83.8%
11%-25%	95	85	89.5%	100	89	89.0%	85	79	92.9%
26%-50%	178	146	82.0%	204	170	83.3%	178	156	87.6%
Bot 50%	209	167	79.9%	253	207	81.8%	193	150	77.7%
By GPA in the First Fall Semester									
3.0 - 4.0	210	198	94.3%	227	219	96.5%	243	234	96.3%
2.0 - 2.99	209	196	93.8%	242	223	92.1%	193	183	94.8%
< 2.0	212	130	61.3%	265	168	63.4%	204	114	55.9%
By SAT Groups									
1200+	37	30	81.1%	74	63	85.1%	40	35	87.5%
800-1199	357	299	83.8%	436	373	85.6%	352	301	85.5%
400-799	81	69	85.2%	43	36	83.7%	54	43	79.6%
By Top Five Attended High Schools (a)									
1	71	59	83.1%	94	78	83.0%	87	76	87.4%
2	30	23	76.7%	29	25	86.2%	22	21	95.5%
3	39	31	79.5%	48	44	91.7%	59	49	83.1%
4	46	40	87.0%	43	35	81.4%	25	21	84.0%
5	35	29	82.9%	38	31	81.6%	27	18	66.7%

(a) 1-Penn HS, 2- Elkhart Memorial HS, 3-Mishawaka HS, 4-James W Riley HS, 5-George Washington HS

** Began cell contains 10 or fewer students.

Southeast

Persistence to the Second Semester by Cohort Status

	97 Cohort			98 Cohort			99 Cohort		
	began	ret'd	%	began	ret'd	%	began	ret'd	%
Beginner	903	713	79.0%	980	765	78.1%	956	739	77.3%
Transfer	167	133	79.6%	225	177	78.7%	265	212	80.0%
Overall	1,070	846	79.1%	1,205	942	78.2%	1,221	951	77.9%

Full-Time Beginners Only (FTB)

	97 Cohort			98 Cohort			99 Cohort		
	began	ret'd	%	began	ret'd	%	began	ret'd	%
FTB	642	549	85.5%	727	611	84.0%	717	605	84.4%
FTB as % of Beginners	71.1%	77.0%		74.2%	79.9%		75.0%	81.9%	
FTB as % of Overall	60.0%	64.9%		60.3%	64.9%		58.7%	63.6%	
By Ethnicity									
Black	16	12	75.0%	17	11	64.7%	12	10	83.3%
Hispanic	**	**	75.0%	**	**	66.7%	**	**	83.3%
Other	622	534	85.9%	704	596	84.7%	699	590	84.4%
Students By Age									
<25	611	525	85.9%	706	594	84.1%	685	578	84.4%
25-29	**	**	75.0%	**	**	77.8%	14	11	78.6%
30-39	11	10	90.9%	**	**	85.7%	11	10	90.9%
>40	12	8	66.7%	**	**	80.0%	**	**	80.0%
By Sex									
Male	266	220	82.7%	320	265	82.8%	270	226	83.7%
Female	376	329	87.5%	407	346	85.0%	447	379	84.8%
By Residency									
Resident	631	540	85.6%	684	576	84.2%	656	556	84.8%
Non-Res.	11	9	81.8%	43	35	81.4%	61	49	80.3%
By High School Rank									
Top 10%	58	58	100.0%	56	52	92.9%	78	75	96.2%
11%-25%	131	121	92.4%	146	130	89.0%	146	131	89.7%
26%-50%	205	178	86.8%	237	202	85.2%	199	172	86.4%
Bot 50%	166	131	78.9%	242	201	83.1%	231	180	77.9%
By GPA in the First Fall Semester									
3.0 - 4.0	215	209	97.2%	217	203	93.5%	239	232	97.1%
2.0 - 2.99	234	220	94.0%	271	251	92.6%	248	227	91.5%
< 2.0	193	120	62.2%	239	157	65.7%	230	146	63.5%
By SAT Groups									
1200+	26	25	96.2%	42	37	88.1%	40	37	92.5%
800-1199	374	336	89.8%	428	376	87.9%	392	339	86.5%
400-799	100	84	84.0%	90	78	86.7%	96	85	88.5%
By Top Five Attended High Schools (a)									
1	68	58	85.3%	66	61	92.4%	68	61	89.7%
2	81	66	81.5%	91	75	82.4%	91	78	85.7%
3	69	60	87.0%	71	59	83.1%	59	49	83.1%
4	35	32	91.4%	22	17	77.3%	20	16	80.0%
5	41	35	85.4%	42	40	95.2%	40	33	82.5%

(a) 1-Floyd Central HS, 2- New Albany HS, 3-Jeffersonville HS, 4-Charlestown HS, 5-Our Lady of Providence HS.

** Began cell contains 10 or fewer students.