



This report provides views on persistence to the second semester for the incoming full-time, beginner cohorts of 1998, 1999, and 2000. Consistent with our cohort logic, students are defined to a cohort based upon their entry semester/status (fall or either previous summer session/degree-seeking beginner or transfer) and/or by their high school graduation date when appropriate.

An appendix (10.2.2) is available which includes state-wide technology (SWT) students in the retention figures. On six of the IU campuses, students may easily transfer among SWT and IU programs without leaving the campus. This additional view on retention credits SWT students back to the campus. Summary views on the entire beginner cohorts and part-time beginner cohort subsets are also available as an addendum to this report (10.2.1). Please contact us if you would like to receive either of these additional reports. As part of accepted practice in retention reporting, deceased students are now excluded from the cohort figures. To protect student privacy, cells with a "began" number of ten or less are masked.

As always, your comments and suggestions are welcomed.

**Persistence to the Second Semester by Cohort Status**

	98 Cohort			99 Cohort			100 Cohort		
	began	ret'd	%	began	ret'd	%	began	ret'd	%
Beginner	14,843	12,687	85.5%	14,341	12,185	85.0%	14,425	12,383	85.8%
Transfer	3,533	2,739	77.5%	3,636	2,854	78.5%	4,079	3,215	78.8%
Overall	18,376	15,426	83.9%	17,977	15,039	83.7%	18,504	15,598	84.3%

**Full-Time Beginners Only (FTB)**

	98 Cohort			99 Cohort			100 Cohort		
	began	ret'd	%	began	ret'd	%	began	ret'd	%
FTB	12,653	11,328	89.5%	12,286	10,912	88.8%	12,571	11,222	89.3%
FTB as % of Beginners	85.2%	89.3%		85.7%	89.6%		87.1%	90.6%	
FTB as % of Overall	68.9%	73.4%		68.3%	72.6%		67.9%	71.9%	

**Part-Time Beginners Only (PTB)**

	98 Cohort			99 Cohort			100 Cohort		
	began	ret'd	%	began	ret'd	%	began	ret'd	%
PTB	2,190	1,359	62.1%	2,055	1,273	61.9%	1,854	1,161	62.6%
PTB as % of Beginners	14.8%	10.7%		14.3%	10.4%		12.9%	9.4%	
PTB as % of Overall	11.9%	8.8%		11.4%	8.5%		10.0%	7.4%	

**Source Information**

Todd Schmitz, Dir. Reporting & Research	University Budget Office
Lisa Newlin-Blackwell, Management Reporting Analyst	University Budget Office
Poplars 018 ; (812) 855-9893 <a href="http://www.indiana.edu/~urr">http://www.indiana.edu/~urr</a>	

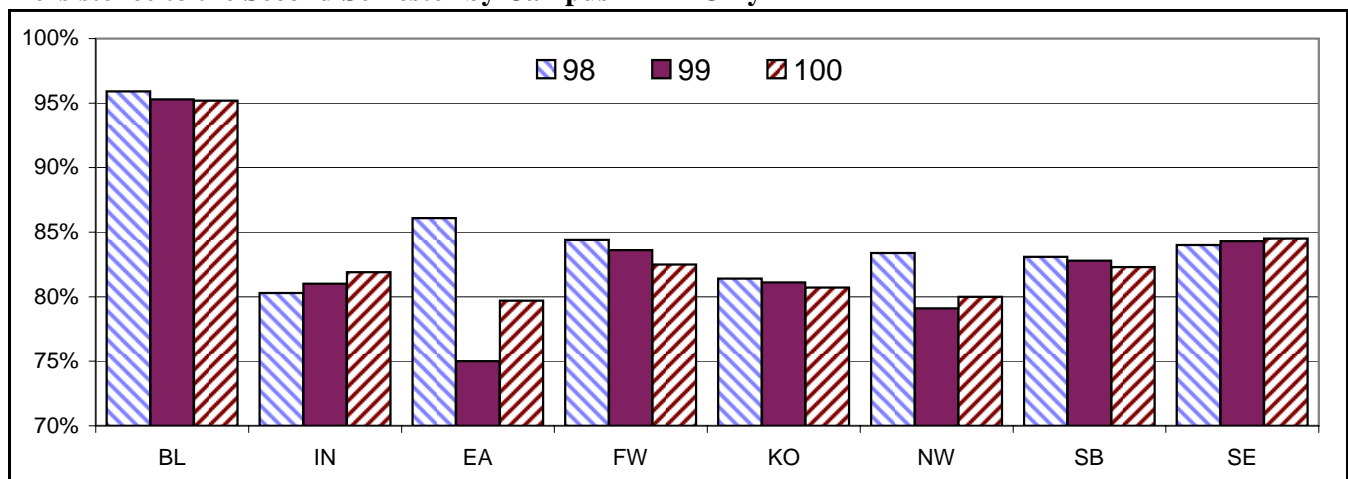
# IU

## Persistence to the Second Semester - Full-Time Beginners Only (FTB)

	98 Cohort			99 Cohort			100 Cohort		
	began	ret'd	%	began	ret'd	%	began	ret'd	%
FTB	12,653	11,328	89.5%	12,286	10,912	88.8%	12,571	11,222	89.3%
By Ethnicity									
Black	828	704	85.0%	819	704	86.0%	751	635	84.6%
Hispanic	264	236	89.4%	249	212	85.1%	250	218	87.2%
Other	11,561	10,388	89.9%	11,218	9,996	89.1%	11,570	10,369	89.6%
Students By Age									
<25	12,329	11,068	89.8%	11,954	10,668	89.2%	12,289	11,006	89.6%
25-29	183	137	74.9%	176	131	74.4%	146	104	71.2%
30-39	97	83	85.6%	104	79	76.0%	93	76	81.7%
>39	44	40	90.9%	52	34	65.4%	43	36	83.7%
By Sex									
Male	5,470	4,870	89.0%	5,045	4,432	87.8%	5,405	4,808	89.0%
Female	7,183	6,458	89.9%	7,241	6,480	89.5%	7,166	6,414	89.5%
By Residency									
Resident	10,434	9,215	88.3%	10,056	8,805	87.6%	10,049	8,854	88.1%
Non-Res.	2,219	2,113	95.2%	2,230	2,107	94.5%	2,522	2,368	93.9%
By High School Rank									
Top 10%	1,715	1,649	96.2%	1,743	1,665	95.5%	1,678	1,620	96.5%
11%-25%	2,839	2,669	94.0%	2,791	2,609	93.5%	2,829	2,642	93.4%
26%-50%	3,975	3,574	89.9%	3,787	3,432	90.6%	4,024	3,631	90.2%
Bot 50%	2,860	2,347	82.1%	2,547	2,024	79.5%	2,567	2,072	80.7%
By GPA in the First Fall Semester									
3.0 - 4.0	4,964	4,841	97.5%	5,062	4,914	97.1%	5,331	5,168	96.9%
2.0 - 2.99	4,753	4,534	95.4%	4,412	4,210	95.4%	4,374	4,144	94.7%
< 2.0	2,936	1,953	66.5%	2,812	1,788	63.6%	2,866	1,910	66.6%
By SAT Groups									
1200+	1,978	1,893	95.7%	1,783	1,691	94.8%	1,822	1,740	95.5%
800-1190	7,700	6,994	90.8%	7,465	6,751	90.4%	7,736	7,016	90.7%
400-790	775	639	82.5%	771	641	83.1%	719	604	84.0%
By Top Five Attended High Schools (a)									
1	230	211	91.7%	212	194	91.5%	210	202	96.2%
2	136	127	93.4%	144	133	92.4%	137	127	92.7%
3	170	133	78.2%	141	119	84.4%	141	117	83.0%
4	207	192	92.8%	209	191	91.4%	188	172	91.5%
5	201	134	66.7%	231	142	61.5%	242	148	61.2%

(a) 1-Carmel HS, 2- Center Grove HS, 3-Ben Davis HS, 4-North Central HS, 5-In-State GED.

## Persistence to the Second Semester by Campus - FTB Only



# Bloomington

## Persistence to the Second Semester by Cohort Status

	98 Cohort			99 Cohort			100 Cohort		
	began	ret'd	%	began	ret'd	%	began	ret'd	%
Beginner	6,803	6,509	95.7%	6,580	6,253	95.0%	6,936	6,596	95.1%
Transfer	636	581	91.4%	697	641	92.0%	775	704	90.8%
Overall	7,439	7,090	95.3%	7,277	6,894	94.7%	7,711	7,300	94.7%

### Full-Time Beginners Only (FTB)

	98 Cohort			99 Cohort			100 Cohort		
	began	ret'd	%	began	ret'd	%	began	ret'd	%
FTB	6,741	6,467	95.9%	6,516	6,208	95.3%	6,874	6,548	95.3%
FTB as % of Beginners	99.1%	99.4%		99.0%	99.3%		99.1%	99.3%	
FTB as % of Overall	90.6%	91.2%		89.5%	90.0%		89.1%	89.7%	
By Ethnicity									
Black	276	263	95.3%	323	304	94.1%	296	271	91.6%
Hispanic	132	127	96.2%	115	109	94.8%	131	126	96.2%
Other	6,333	6,077	96.0%	6,078	5,795	95.3%	6,447	6,151	95.4%
Students By Age									
<25	6,704	6,441	96.1%	6,487	6,189	95.4%	6,850	6,528	95.3%
25-29	22	13	59.1%	19	14	73.7%	11	8	72.7%
30-39	**	**	88.9%	**	**	71.4%	**	**	100.0%
>40	**	**	83.3%	**	**	0.0%	**	**	83.3%
By Sex									
Male	2,930	2,813	96.0%	2,683	2,556	95.3%	3,029	2,904	95.9%
Female	3,811	3,654	95.9%	3,833	3,652	95.3%	3,845	3,644	94.8%
By Residency									
Resident	4,693	4,498	95.8%	4,465	4,245	95.1%	4,537	4,323	95.3%
Non-Res.	2,048	1,969	96.1%	2,051	1,963	95.7%	2,337	2,225	95.2%
By High School Rank									
Top 10%	1,329	1,299	97.7%	1,324	1,292	97.6%	1,276	1,243	97.4%
11%-25%	1,935	1,861	96.2%	1,883	1,801	95.6%	1,920	1,833	95.5%
26%-50%	2,255	2,144	95.1%	2,187	2,064	94.4%	2,308	2,176	94.3%
Bot 50%	536	509	95.0%	385	357	92.7%	525	491	93.5%
By GPA in the First Fall Semester									
3.0 - 4.0	3,227	3,187	98.8%	3,222	3,162	98.1%	3,521	3,446	97.9%
2.0 - 2.99	2,632	2,574	97.8%	2,460	2,397	97.4%	2,469	2,393	96.9%
< 2.0	882	706	80.0%	834	649	77.8%	884	709	80.2%
By SAT Groups									
1200+	1,641	1,604	97.7%	1,541	1,489	96.6%	1,566	1,512	96.6%
800-1190	4,176	3,998	95.7%	4,055	3,870	95.4%	4,278	4,077	95.3%
400-790	125	118	94.4%	128	118	92.2%	144	135	93.8%
By Top Five Attended High Schools (a)									
1	122	114	93.4%	104	101	97.1%	118	116	98.3%
2	129	126	97.7%	129	126	97.7%	124	120	96.8%
3	145	142	97.9%	142	136	95.8%	146	145	99.3%
4	94	86	91.5%	85	80	94.1%	116	108	93.1%
5	75	72	96.0%	72	72	100.0%	57	56	98.2%

(a) 1-Bloomington South HS, 2- North Central HS, 3-Carmel HS, 4-Bloomington North HS, 5-Center Grove HS.

\*\* Began cell contains 10 or fewer students.

# IUPUI

## Persistence to the Second Semester by Cohort Status

	98 Cohort			99 Cohort			100 Cohort		
	began	ret'd	%	began	ret'd	%	began	ret'd	%
Beginner	3,541	2,662	75.2%	3,455	2,600	75.3%	3,198	2,451	76.6%
Transfer	1,390	1,041	74.9%	1,368	1,029	75.2%	1,623	1,228	75.7%
Overall	4,931	3,703	75.1%	4,823	3,629	75.2%	4,821	3,679	76.3%

## Full-Time Beginners Only (FTB)

	98 Cohort			99 Cohort			100 Cohort		
	began	ret'd	%	began	ret'd	%	began	ret'd	%
FTB	2,575	2,068	80.3%	2,563	2,077	81.0%	2,481	2,033	81.9%
FTB as % of Beginners	72.7%	77.7%		74.2%	79.9%		77.6%	82.9%	
FTB as % of Overall	52.2%	55.8%		53.1%	57.2%		51.5%	55.3%	
By Ethnicity									
Black	308	241	78.2%	292	240	82.2%	255	206	80.8%
Hispanic	26	22	84.6%	36	28	77.8%	38	29	76.3%
Other	2,241	1,805	80.5%	2,235	1,809	80.9%	2,188	1,798	82.2%
Students By Age									
<25	2,449	1,971	80.5%	2,442	1,993	81.6%	2,354	1,936	82.2%
25-29	74	55	74.3%	65	46	70.8%	71	50	70.4%
30-39	40	30	75.0%	36	24	66.7%	38	31	81.6%
>40	12	12	100.0%	20	14	70.0%	18	16	88.9%
By Sex									
Male	1,187	953	80.3%	1,147	907	79.1%	1,065	865	81.2%
Female	1,388	1,115	80.3%	1,416	1,170	82.6%	1,416	1,168	82.5%
By Residency									
Resident	2,527	2,024	80.1%	2,509	2,031	80.9%	2,421	1,984	81.9%
Non-Res.	48	44	91.7%	54	46	85.2%	60	49	81.7%
By High School Rank									
Top 10%	152	136	89.5%	177	158	89.3%	166	157	94.6%
11%-25%	358	319	89.1%	374	330	88.2%	412	365	88.6%
26%-50%	725	589	81.2%	708	610	86.2%	718	608	84.7%
Bot 50%	1,118	863	77.2%	1,041	811	77.9%	905	707	78.1%
By GPA in the First Fall Semester									
3.0 - 4.0	730	697	95.5%	754	718	95.2%	724	696	96.1%
2.0 - 2.99	912	845	92.7%	893	836	93.6%	852	787	92.4%
< 2.0	933	526	56.4%	916	523	57.1%	905	550	60.8%
By SAT Groups									
1200+	124	109	87.9%	116	95	81.9%	130	119	91.5%
800-1190	1,490	1,247	83.7%	1,477	1,242	84.1%	1,488	1,258	84.5%
400-790	290	224	77.2%	298	240	80.5%	230	190	82.6%
By Top Five Attended High Schools (a)									
1	68	61	89.7%	64	52	81.3%	53	42	79.2%
2	61	55	90.2%	72	61	84.7%	80	71	88.8%
3	142	107	75.4%	110	88	80.0%	103	80	77.7%
4	64	50	78.1%	95	77	81.1%	73	62	84.9%
5	91	54	59.3%	90	44	48.9%	127	80	63.0%

(a) 1-Perry Meridian HS, 2- Center Grove HS, 3-Ben Davis HS, 4-Warren Central HS, 5- In-State GED

\*\* Began cell contains 10 or fewer students.

# East

## Persistence to the Second Semester by Cohort Status

	98 Cohort			99 Cohort			100 Cohort		
	began	ret'd	%	began	ret'd	%	began	ret'd	%
Beginner	386	286	74.1%	427	289	67.7%	415	299	72.0%
Transfer	123	90	73.2%	97	68	70.1%	105	78	74.3%
Overall	509	376	73.9%	524	357	68.1%	520	377	72.5%

## Full-Time Beginners Only (FTB)

	98 Cohort			99 Cohort			100 Cohort		
	began	ret'd	%	began	ret'd	%	began	ret'd	%
FTB	230	198	86.1%	256	192	75.0%	251	200	79.7%
FTB as % of Beginners	59.6%	69.2%		60.0%	66.4%		60.5%	66.9%	
FTB as % of Overall	45.2%	52.7%		48.9%	53.8%		48.3%	53.1%	
By Ethnicity									
Black	10	10	100.0%	14	10	71.4%	14	10	71.4%
Hispanic	**	**	100.0%	**	**	100.0%	**	**	50.0%
Other	218	186	85.3%	241	181	75.1%	235	189	80.4%
Students By Age									
<25	210	179	85.2%	220	164	74.5%	223	177	79.4%
25-29	**	**	100.0%	19	17	89.5%	**	**	80.0%
30-39	**	**	90.0%	14	10	71.4%	13	10	76.9%
>40	**	**	100.0%	**	**	33.3%	**	**	100.0%
By Sex									
Male	84	72	85.7%	94	68	72.3%	88	65	73.9%
Female	146	126	86.3%	162	124	76.5%	163	135	82.8%
By Residency									
Resident	221	191	86.4%	248	186	75.0%	241	192	79.7%
Non-Res.	**	**	77.8%	**	**	75.0%	**	**	80.0%
By High School Rank									
Top 10%	**	**	100.0%	**	**	75.0%	11	10	90.9%
11%-25%	26	22	84.6%	30	26	86.7%	27	24	88.9%
26%-50%	77	65	84.4%	63	55	87.3%	55	47	85.5%
Bot 50%	84	73	86.9%	91	58	63.7%	98	76	77.6%
By GPA in the First Fall Semester									
3.0 - 4.0	85	83	97.6%	87	84	96.6%	89	82	92.1%
2.0 - 2.99	74	68	91.9%	69	66	95.7%	71	65	91.5%
< 2.0	72	48	66.7%	100	42	42.0%	91	53	58.2%
By SAT Groups									
1200+	**	**	80.0%	**	**	83.3%	**	**	100.0%
800-1190	105	94	89.5%	89	72	80.9%	79	71	89.9%
400-790	29	25	86.2%	24	20	83.3%	15	12	80.0%
By Top Five Attended High Schools (a)									
1	40	34	85.0%	60	42	70.0%	50	38	76.0%
2	27	23	85.2%	24	18	75.0%	28	23	82.1%
3	20	20	100.0%	21	16	76.2%	17	16	94.1%
4	**	**	100.0%	16	11	68.8%	**	**	87.5%
5	**	**	100.0%	18	11	61.1%	23	16	69.6%

(a) 1-Richmond HS, 2- Connersville Senior HS, 3-Centerville Senior HS, 4-Union County HS, 5-In-State GED

\*\* Began cell contains 10 or fewer students.

# Fort Wayne

## Persistence to the Second Semester by Cohort Status

	98 Cohort			99 Cohort			100 Cohort		
	began	ret'd	%	began	ret'd	%	began	ret'd	%
Beginner	972	781	80.3%	933	741	79.4%	935	729	78.0%
Transfer	488	344	70.5%	513	379	73.9%	459	351	76.5%
Overall	1,460	1,125	77.1%	1,446	1,120	77.5%	1,394	1,080	77.5%

## Full-Time Beginners Only (FTB)

	98 Cohort			99 Cohort			100 Cohort		
	began	ret'd	%	began	ret'd	%	began	ret'd	%
FTB	776	655	84.4%	755	631	83.6%	755	624	82.6%
FTB as % of Beginners	79.8%	83.9%		80.9%	85.2%		80.7%	85.6%	
FTB as % of Overall	53.2%	58.2%		52.2%	56.3%		54.2%	57.8%	
By Ethnicity									
Black	31	25	80.6%	26	19	73.1%	20	18	90.0%
Hispanic	14	10	71.4%	18	17	94.4%	11	11	100.0%
Other	731	620	84.8%	711	595	83.7%	724	595	82.2%
Students By Age									
<25	747	630	84.3%	729	613	84.1%	740	612	82.7%
25-29	15	12	80.0%	18	11	61.1%	11	9	81.8%
30-39	**	**	100.0%	**	**	80.0%	**	**	75.0%
>40	**	**	80.0%	**	**	100.0%	n/a	n/a	n/a
By Sex									
Male	351	292	83.2%	315	261	82.9%	318	247	77.7%
Female	425	363	85.4%	440	370	84.1%	437	377	86.3%
By Residency									
Resident	733	619	84.4%	734	614	83.7%	731	604	82.6%
Non-Res.	43	36	83.7%	21	17	81.0%	24	20	83.3%
By High School Rank									
Top 10%	47	43	91.5%	43	36	83.7%	53	48	90.6%
11%-25%	128	113	88.3%	126	111	88.1%	123	108	87.8%
26%-50%	222	190	85.6%	193	167	86.5%	250	208	83.2%
Bot 50%	296	241	81.4%	309	249	80.6%	282	223	79.1%
By GPA in the First Fall Semester									
3.0 - 4.0	229	215	93.9%	256	241	94.1%	281	264	94.0%
2.0 - 2.99	300	282	94.0%	248	228	91.9%	258	241	93.4%
< 2.0	247	158	64.0%	251	162	64.5%	216	119	55.1%
By SAT Groups									
1200+	50	42	84.0%	30	26	86.7%	32	26	81.3%
800-1190	526	442	84.0%	513	429	83.6%	555	461	83.1%
400-790	60	52	86.7%	68	61	89.7%	57	50	87.7%
By Top Five Attended High Schools (a)									
1	54	43	79.6%	47	37	78.7%	36	28	77.8%
2	51	44	86.3%	36	35	97.2%	53	42	79.2%
3	45	39	86.7%	43	36	83.7%	36	31	86.1%
4	34	29	85.3%	26	21	80.8%	28	21	75.0%
5	38	34	89.5%	30	25	83.3%	49	34	69.4%

(a) 1- R Nelson Snider HS, 2- Northrop HS, 3-Homestead HS, 4-North Side HS, 5-Carroll HS.

\*\* Began cell contains 10 or fewer students.

Fort Wayne - IU Students only

# Kokomo

## Persistence to the Second Semester by Cohort Status

	98 Cohort			99 Cohort			100 Cohort		
	began	ret'd	%	began	ret'd	%	began	ret'd	%
Beginner	505	386	76.4%	435	346	79.5%	495	386	78.0%
Transfer	140	104	74.3%	137	100	73.0%	162	121	74.7%
Overall	645	490	76.0%	572	446	78.0%	657	507	77.2%

## Full-Time Beginners Only (FTB)

	98 Cohort			99 Cohort			100 Cohort		
	began	ret'd	%	began	ret'd	%	began	ret'd	%
FTB	334	272	81.4%	296	240	81.1%	348	281	80.7%
FTB as % of Beginners	66.1%	70.5%		68.0%	69.4%		70.3%	72.8%	
FTB as % of Overall	51.8%	55.5%		51.7%	53.8%		53.0%	55.4%	
By Ethnicity									
Black	**	**	50.0%	**	**	100.0%	**	**	66.7%
Hispanic	**	**	100.0%	**	**	100.0%	**	**	66.7%
Other	325	264	81.2%	290	234	80.7%	342	277	81.0%
Students By Age									
<25	322	261	81.1%	287	233	81.2%	343	277	80.8%
25-29	8	7	87.5%	**	**	100.0%	**	**	100.0%
30-39	3	3	100.0%	**	**	100.0%	**	**	100.0%
>40	1	1	100.0%	**	**	33.3%	**	**	50.0%
By Sex									
Male	103	74	71.8%	83	66	79.5%	125	96	76.8%
Female	231	198	85.7%	213	174	81.7%	223	185	83.0%
By Residency									
Resident	332	272	81.9%	294	238	81.0%	345	279	80.9%
Non-Res.	**	**	0.0%	**	**	100.0%	**	**	66.7%
By High School Rank									
Top 10%	19	18	94.7%	19	15	78.9%	22	21	95.5%
11%-25%	67	64	95.5%	64	54	84.4%	63	56	88.9%
26%-50%	118	100	84.7%	105	84	80.0%	138	119	86.2%
Bot 50%	120	84	70.0%	88	71	80.7%	105	71	67.6%
By GPA in the First Fall Semester									
3.0 - 4.0	116	110	94.8%	124	114	91.9%	110	101	91.8%
2.0 - 2.99	123	113	91.9%	112	101	90.2%	126	117	92.9%
< 2.0	95	49	51.6%	60	25	41.7%	112	63	56.3%
By SAT Groups									
1200+	15	11	73.3%	**	**	71.4%	11	9	81.8%
800-1190	206	178	86.4%	199	164	82.4%	239	203	84.9%
400-790	25	17	68.0%	24	22	91.7%	26	19	73.1%
By Top Five Attended High Schools (a)									
1	69	57	82.6%	32	27	84.4%	47	33	70.2%
2	12	11	91.7%	16	14	87.5%	16	13	81.3%
3	29	23	79.3%	29	21	72.4%	23	17	73.9%
4	14	10	71.4%	13	8	61.5%	11	9	81.8%
5	13	11	84.6%	19	16	84.2%	20	16	80.0%

(a) 1-Kokomo HS, 2- Taylor Jr-Sr HS, 3-Western HS, 4-Logansport HS, 5-Northwestern HS.

\*\* Began cell contains 10 or fewer students.

## Northwest

### Persistence to the Second Semester by Cohort Status

	98 Cohort			99 Cohort			100 Cohort		
	began	ret'd	%	began	ret'd	%	began	ret'd	%
Beginner	673	533	79.2%	683	528	77.3%	661	506	76.6%
Transfer	187	145	77.5%	217	166	76.5%	223	171	76.7%
Overall	860	678	78.8%	900	694	77.1%	884	677	76.6%

### Full-Time Beginners Only (FTB)

	98 Cohort			99 Cohort			100 Cohort		
	began	ret'd	%	began	ret'd	%	began	ret'd	%
FTB	537	448	83.4%	541	428	79.1%	519	415	80.0%
FTB as % of Beginners	79.8%	84.1%		79.2%	81.1%		78.5%	82.0%	
FTB as % of Overall	62.4%	66.1%		60.1%	61.7%		58.7%	61.3%	
By Ethnicity									
Black	135	114	84.4%	113	88	77.9%	122	98	80.3%
Hispanic	53	43	81.1%	60	44	73.3%	48	36	75.0%
Other	349	291	83.4%	368	296	80.4%	349	281	80.5%
Students By Age									
<25	513	427	83.2%	508	404	79.5%	489	397	81.2%
25-29	14	11	78.6%	23	17	73.9%	17	8	47.1%
30-39	**	**	100.0%	**	**	85.7%	**	**	90.0%
>40	**	**	100.0%	**	**	33.3%	**	**	33.3%
By Sex									
Male	190	153	80.5%	195	147	75.4%	200	150	75.0%
Female	347	295	85.0%	346	281	81.2%	319	265	83.1%
By Residency									
Resident	534	445	83.3%	535	425	79.4%	513	412	80.3%
Non-Res.	**	**	100.0%	**	**	50.0%	**	**	50.0%
By High School Rank									
Top 10%	57	52	91.2%	48	44	91.7%	43	41	95.3%
11%-25%	79	71	89.9%	84	77	91.7%	85	78	91.8%
26%-50%	138	115	83.3%	160	130	81.3%	144	121	84.0%
Bot 50%	212	170	80.2%	211	150	71.1%	212	155	73.1%
By GPA in the First Fall Semester									
3.0 - 4.0	134	128	95.5%	137	129	94.2%	146	138	94.5%
2.0 - 2.99	199	178	89.4%	187	171	91.4%	163	143	87.7%
< 2.0	204	142	69.6%	217	128	59.0%	210	134	63.8%
By SAT Groups									
1200+	26	22	84.6%	17	14	82.4%	19	17	89.5%
800-1190	332	285	85.8%	336	281	83.6%	294	242	82.3%
400-790	113	89	78.8%	117	89	76.1%	110	90	81.8%
By Top Five Attended High Schools (a)									
1	41	32	78.0%	55	42	76.4%	49	37	75.5%
2	48	39	81.3%	44	38	86.4%	38	36	94.7%
3	37	32	86.5%	31	27	87.1%	30	24	80.0%
4	35	33	94.3%	41	37	90.2%	30	23	76.7%
5	23	19	82.6%	21	18	85.7%	28	25	89.3%

(a) 1-Portage HS, 2- Merrillville Sr HS, 3-Hobart HS, 4-Lake Central HS, 5-Lew Wallace HS

\*\* Began cell contains 10 or fewer students.



## South Bend

### Persistence to the Second Semester by Cohort Status

	98 Cohort			99 Cohort			100 Cohort		
	began	ret'd	%	began	ret'd	%	began	ret'd	%
Beginner	983	765	77.8%	869	687	79.1%	856	670	78.3%
Transfer	344	257	74.7%	330	246	74.5%	396	302	76.3%
Overall	1,327	1,022	77.0%	1,199	933	77.8%	1,252	972	77.6%

### Full-Time Beginners Only (FTB)

	98 Cohort			99 Cohort			100 Cohort		
	began	ret'd	%	began	ret'd	%	began	ret'd	%
FTB	733	609	83.1%	639	529	82.8%	638	525	82.3%
FTB as % of Beginners	74.6%	79.6%		73.5%	77.0%		74.5%	78.4%	
FTB as % of Overall	55.2%	59.6%		53.3%	56.7%		51.0%	54.0%	
By Ethnicity									
Black	49	39	79.6%	35	29	82.9%	31	23	74.2%
Hispanic	24	21	87.5%	11	6	54.5%	16	12	75.0%
Other	660	549	83.2%	593	494	83.3%	591	490	82.9%
Students By Age									
<25	678	565	83.3%	594	492	82.8%	613	509	83.0%
25-29	34	25	73.5%	16	13	81.3%	12	8	66.7%
30-39	13	12	92.3%	17	14	82.4%	**	**	50.0%
>40	**	**	87.5%	12	10	83.3%	**	**	80.0%
By Sex									
Male	305	248	81.3%	256	201	78.5%	289	234	81.0%
Female	428	361	84.3%	383	328	85.6%	349	291	83.4%
By Residency									
Resident	710	590	83.1%	613	509	83.0%	617	512	83.0%
Non-Res.	23	19	82.6%	26	20	76.9%	21	13	61.9%
By High School Rank									
Top 10%	46	40	87.0%	39	33	84.6%	47	43	91.5%
11%-25%	100	89	89.0%	87	81	93.1%	80	68	85.0%
26%-50%	204	170	83.3%	175	153	87.4%	174	150	86.2%
Bot 50%	252	206	81.7%	191	148	77.5%	196	157	80.1%
By GPA in the First Fall Semester									
3.0 - 4.0	227	219	96.5%	243	234	96.3%	214	204	95.3%
2.0 - 2.99	242	223	92.1%	193	183	94.8%	202	178	88.1%
< 2.0	264	167	63.3%	203	112	55.2%	222	143	64.4%
By SAT Groups									
1200+	75	64	85.3%	35	30	85.7%	34	29	85.3%
800-1190	436	373	85.6%	366	317	86.6%	381	328	86.1%
400-790	43	36	83.7%	44	32	72.7%	48	38	79.2%
By Top Five Attended High Schools (a)									
1	94	78	83.0%	86	75	87.2%	107	93	86.9%
2	29	25	86.2%	22	21	95.5%	31	28	90.3%
3	48	44	91.7%	59	49	83.1%	43	34	79.1%
4	43	35	81.4%	25	21	84.0%	25	21	84.0%
5	38	31	81.6%	27	18	66.7%	20	17	85.0%

(a) 1-Penn HS, 2- Elkhart Memorial HS, 3-Mishawaka HS, 4-James W Riley HS, 5-George Washington HS

\*\* Began cell contains 10 or fewer students.

## Southeast

### Persistence to the Second Semester by Cohort Status

	98 Cohort			99 Cohort			100 Cohort		
	began	ret'd	%	began	ret'd	%	began	ret'd	%
Beginner	980	765	78.1%	959	741	77.3%	929	745	80.2%
Transfer	225	177	78.7%	280	227	81.1%	336	260	77.4%
Overall	1,205	942	78.2%	1,239	968	78.1%	1,265	1,005	79.4%

### Full-Time Beginners Only (FTB)

	98 Cohort			99 Cohort			100 Cohort		
	began	ret'd	%	began	ret'd	%	began	ret'd	%
FTB	727	611	84.0%	720	607	84.3%	705	596	84.5%
FTB as % of Beginners	74.2%	79.9%		75.1%	81.9%		75.9%	80.0%	
FTB as % of Overall	60.3%	64.9%		58.1%	62.7%		55.7%	59.3%	
By Ethnicity									
Black	17	11	64.7%	12	10	83.3%	**	**	70.0%
Hispanic	**	**	66.7%	**	**	83.3%	1	1	100.0%
Other	704	596	84.7%	702	592	84.3%	694	588	84.7%
Students By Age									
<25	706	594	84.1%	687	580	84.4%	677	570	84.2%
25-29	**	**	77.8%	14	11	78.6%	12	11	91.7%
30-39	**	**	85.7%	14	12	85.7%	12	11	91.7%
>40	**	**	80.0%	**	**	80.0%	**	**	100.0%
By Sex									
Male	320	265	82.8%	272	226	83.1%	291	247	84.9%
Female	407	346	85.0%	448	381	85.0%	414	349	84.3%
By Residency									
Resident	684	576	84.2%	658	557	84.7%	644	548	85.1%
Non-Res.	43	35	81.4%	62	50	80.6%	61	48	78.7%
By High School Rank									
Top 10%	56	52	92.9%	85	81	95.3%	60	57	95.0%
11%-25%	146	130	89.0%	143	129	90.2%	119	110	92.4%
26%-50%	237	202	85.2%	196	169	86.2%	237	202	85.2%
Bot 50%	242	201	83.1%	231	180	77.9%	244	192	78.7%
By GPA in the First Fall Semester									
3.0 - 4.0	217	203	93.5%	239	232	97.1%	246	237	96.3%
2.0 - 2.99	271	251	92.6%	250	228	91.2%	233	220	94.4%
< 2.0	239	157	65.7%	231	147	63.6%	226	139	61.5%
By SAT Groups									
1200+	42	37	88.1%	31	27	87.1%	26	24	92.3%
800-1190	428	376	87.9%	430	376	87.4%	422	376	89.1%
400-790	90	78	86.7%	68	59	86.8%	89	70	78.7%
By Top Five Attended High Schools (a)									
1	66	61	92.4%	68	61	89.7%	70	60	85.7%
2	91	75	82.4%	91	77	84.6%	82	73	89.0%
3	71	59	83.1%	59	49	83.1%	75	65	86.7%
4	22	17	77.3%	20	16	80.0%	30	23	76.7%
5	42	40	95.2%	40	33	82.5%	35	30	85.7%

(a) 1-Floyd Central HS, 2- New Albany HS, 3-Jeffersonville HS, 4-Charlestown HS, 5-Our Lady of Providence HS.

\*\* Began cell contains 10 or fewer students.