



This report provides views on persistence to the second semester for the incoming full-time, beginner (FTB) cohorts of 2004, 2005, and 2006. In summary, the overall beginner and transfer retention rate for the 2006 cohort realized a slight gain over the 2004 and 2005 cohort rates. After a decline from the 2004 to 2005 cohorts, the FTB rate increased slightly to 89.9%, which is close to the 2004 cohort rate. Students pursuing bachelor's degrees also rebounded by achieving a gain of .7 percentage points above last year's rate. African American FTB rate increased slightly over the 2005 cohort rates to 84.0% which is two percentage points off the 2004 cohort rate. The Hispanic rates remained relatively stable with that of the 2005 cohort.

The proportion of FTB students achieving a first semester GPA of 2.0 or less decreased this year after increasing the past two years. In 2004 that proportion was 20.2%, in 2005 - 22.4%, and with the 2006 cohort that group comprised 20.4% of the FTB cohort. At the university wide level, the retention rate for these low-performing students (GPA in the 1st semester) declined slightly. There are some exceptions to this trend at Bloomington, IUPUI, Fort Wayne, and Southeast.

An appendix is available which provides views on the entire beginner cohorts and part-time beginner cohort subsets. These and other reports are available via our website at <http://www.indiana.edu/~urr>.

To protect student privacy, cells with a "began" number of ten or less are masked. As always, your comments and suggestions are welcomed.

Persistence to the Second Semester by Cohort Status

	2004 Cohort			2005 Cohort			2006 Cohort			5 Yr Avg.
	began	ret'd	%	began	ret'd	%	began	ret'd	%	
Beginner	13,422	11,737	87.4%	13,799	12,061	87.4%	14,113	12,420	88.0%	87.6%
Transfer	5,096	4,074	79.9%	5,016	4,002	79.8%	5,291	4,260	80.5%	80.5%
Exclusions	3			0			3			
Overall	18,518	15,811	85.4%	18,815	16,063	85.4%	19,404	16,680	86.0%	85.9%

Full-Time Beginners Only (FTB)

	2004 Cohort			2005 Cohort			2006 Cohort			5 Yr Avg.
	began	ret'd	%	began	ret'd	%	began	ret'd	%	
FTB	12,107	10,894	90.0%	12,737	11,376	89.3%	13,179	11,847	89.9%	90.3%
FTB as % of Beginners	90.2%	92.8%		92.3%	94.3%		93.4%	95.4%		
FTB as % of Overall	65.4%	68.9%		67.7%	70.8%		67.9%	71.0%		

Part-Time Beginners Only (PTB)

	2004 Cohort			2005 Cohort			2006 Cohort			5 Yr Avg.
	began	ret'd	%	began	ret'd	%	began	ret'd	%	
PTB	1,315	843	64.1%	1,062	685	64.5%	934	573	61.3%	66.3%
PTB as % of Beginners	9.8%	7.2%		7.7%	5.7%		6.6%	4.6%		
PTB as % of Overall	7.1%	5.3%		5.6%	4.3%		4.8%	3.4%		

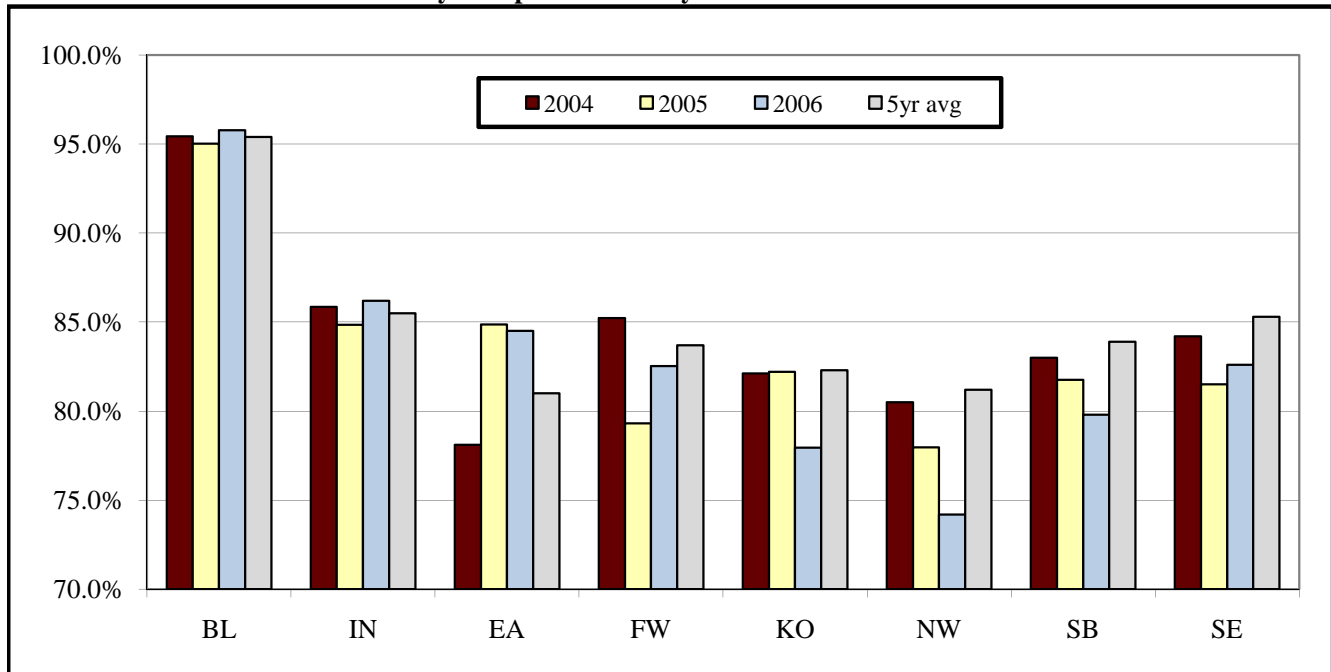
Source Information

IU

Persistence to the Second Semester - Full-Time Beginners Only (FTB)

	2004 Cohort			2005 Cohort			2006 Cohort			5 Yr Avg.
	began	ret'd	%	began	ret'd	%	began	ret'd	%	
FTB	12,107	10,894	90.0%	12,737	11,376	89.3%	13,179	11,847	89.9%	90.3%
By Intended Degree										
Bachelor's	11,278	10,200	90.4%	12,311	11,007	89.4%	12,794	11,533	90.1%	90.6%
Other	829	694	83.7%	426	369	86.6%	385	314	81.6%	84.8%
By Ethnicity										
African Amer.	804	692	86.1%	859	717	83.5%	770	647	84.0%	85.8%
Hispanic	347	306	88.2%	351	306	87.2%	416	364	87.5%	88.7%
Other	10,956	9,896	90.3%	11,527	10,353	89.8%	11,993	10,836	90.4%	90.6%
Students By Age										
<20	11,070	10,068	90.9%	11,781	10,646	90.4%	12,219	11,114	91.0%	91.3%
20-21	456	364	79.8%	459	356	77.6%	474	370	78.1%	79.8%
22-24	244	191	78.3%	197	144	73.1%	202	136	67.3%	76.7%
25+	337	271	80.4%	300	230	76.7%	284	227	79.9%	80.2%
By Sex										
Male	5,174	4,636	89.6%	5,475	4,883	89.2%	5,758	5,197	90.3%	89.9%
Female	6,933	6,258	90.3%	7,262	6,493	89.4%	7,421	6,650	89.6%	90.5%
By Residency										
Resident	9,683	8,619	89.0%	10,079	8,887	88.2%	10,033	8,870	88.4%	89.2%
Non-Res.	2,424	2,275	93.9%	2,658	2,489	93.6%	3,146	2,977	94.6%	94.4%
By High School Rank										
Top 10%	1,422	1,355	95.3%	1,524	1,455	95.5%	1,680	1,607	95.7%	96.0%
11%-25%	2,420	2,236	92.4%	2,416	2,216	91.7%	2,496	2,329	93.3%	93.3%
26%-50%	3,449	3,093	89.7%	3,398	3,014	88.7%	3,284	2,886	87.9%	90.1%
Bot 50%	1,911	1,552	81.2%	1,898	1,524	80.3%	1,796	1,417	78.9%	82.6%
By GPA in the First Fall Semester										
3.0 - 4.0	5,737	5,575	97.2%	5,725	5,568	97.3%	6,365	6,178	97.1%	97.1%
2.0 - 2.99	3,927	3,706	94.4%	4,162	3,938	94.6%	4,132	3,917	94.8%	94.8%
< 2.0	2,443	1,613	66.0%	2,850	1,870	65.6%	2,682	1,752	65.3%	66.5%
By SAT Groups										
1200+	1,733	1,663	96.0%	2,035	1,940	95.3%	2,130	2,049	96.2%	95.8%
800-1190	7,292	6,593	90.4%	7,364	6,665	90.5%	7,464	6,764	90.6%	91.1%
400-790	618	515	83.3%	541	441	81.5%	573	479	83.6%	84.5%

Persistence to the Second Semester by Campus - FTB Only



Bloomington

Persistence to the Second Semester by Cohort Status

	2004 Cohort			2005 Cohort			2006 Cohort			5 Yr Avg.
	began	ret'd	%	began	ret'd	%	began	ret'd	%	
Beginner	6,350	6,053	95.3%	6,949	6,595	94.9%	7,253	6,943	95.7%	95.3%
Transfer	876	793	90.5%	838	757	90.3%	907	839	92.5%	91.6%
Exclusions	2			0			0			
Overall	7,226	6,846	94.7%	7,787	7,352	94.4%	8,160	7,782	95.4%	94.9%

Full-Time Beginners Only (FTB)

	2004 Cohort			2005 Cohort			2006 Cohort			5 Yr Avg.
	began	ret'd	%	began	ret'd	%	began	ret'd	%	
FTB	6,307	6,019	95.4%	6,912	6,568	95.0%	7,213	6,909	95.8%	95.4%
FTB as % of Beginners	99.3%	99.4%		99.5%	99.6%		99.4%	99.5%		
FTB as % of Overall	87.3%	87.9%		88.8%	89.3%		88.4%	88.8%		
By Intended Degree										
Bachelor's	6,248	5,963	95.4%	6,890	6,546	95.0%	7,197	6,899	95.9%	95.5%
Other	59	56	94.9%	22	22	100.0%	16	10	62.5%	92.2%
By Ethnicity										
African Amer.	351	328	93.4%	409	374	91.4%	342	319	93.3%	93.5%
Hispanic	155	145	93.5%	145	137	94.5%	165	155	93.9%	95.6%
Other	5,801	5,546	95.6%	6,358	6,057	95.3%	6,706	6,435	96.0%	95.5%
Students By Age										
<20	6,188	5,909	95.5%	6,793	6,460	95.1%	7,091	6,797	95.9%	95.6%
20-21	85	80	94.1%	98	88	89.8%	96	92	95.8%	92.2%
22-24	19	18	94.7%	13	13	100.0%	17	12	70.6%	82.4%
25+	15	12	80.0%	**	**	87.5%	**	**	88.9%	79.3%
By Sex										
Male	2,899	2,774	95.7%	3,125	2,979	95.3%	3,335	3,206	96.1%	95.5%
Female	3,408	3,245	95.2%	3,787	3,589	94.8%	3,878	3,703	95.5%	95.4%
By Residency										
Resident	4,114	3,928	95.5%	4,543	4,318	95.0%	4,370	4,181	95.7%	95.3%
Non-Res.	2,193	2,091	95.3%	2,369	2,250	95.0%	2,843	2,728	96.0%	95.8%
By High School Rank										
Top 10%	979	953	97.3%	1,135	1,096	96.6%	1,175	1,147	97.6%	97.3%
11%-25%	1,433	1,360	94.9%	1,432	1,365	95.3%	1,475	1,421	96.3%	95.7%
26%-50%	1,670	1,576	94.4%	1,676	1,570	93.7%	1,474	1,377	93.4%	94.4%
Bot 50%	218	201	92.2%	273	255	93.4%	197	184	93.4%	93.6%
By GPA in the First Fall Semester										
3.0 - 4.0	3,560	3,486	97.9%	3,656	3,583	98.0%	4,114	4,029	97.9%	98.0%
2.0 - 2.99	2,060	1,976	95.9%	2,350	2,270	96.6%	2,305	2,239	97.1%	96.5%
< 2.0	687	557	81.1%	906	715	78.9%	794	641	80.7%	79.8%
By SAT Groups										
1200+	1,448	1,416	97.8%	1,711	1,654	96.7%	1,812	1,767	97.5%	97.1%
800-1190	3,757	3,567	94.9%	4,006	3,795	94.7%	4,019	3,841	95.6%	95.1%
400-790	124	114	91.9%	106	96	90.6%	83	75	90.4%	93.5%

University Reporting & Research

IUPUI

Persistence to the Second Semester by Cohort Status

	2004 Cohort			2005 Cohort			2006 Cohort			5 Yr Avg.
	began	ret'd	%	began	ret'd	%	began	ret'd	%	
Beginner	2,720	2,228	81.9%	2,746	2,247	81.8%	2,784	2,313	83.1%	81.4%
Transfer	2,027	1,594	78.6%	1,823	1,415	77.6%	1,984	1,568	79.0%	78.7%
Exclusions	1			0			1			
Overall	4,747	3,822	80.5%	4,569	3,662	80.1%	4,768	3,881	81.4%	80.4%

Full-Time Beginners Only (FTB)

	2004 Cohort			2005 Cohort			2006 Cohort			5 Yr Avg.
	began	ret'd	%	began	ret'd	%	began	ret'd	%	
FTB	2,303	1,977	85.8%	2,409	2,044	84.8%	2,520	2,173	86.2%	85.5%
FTB as % of Beginners	84.7%	88.7%		87.7%	91.0%		90.5%	93.9%		
FTB as % of Overall	48.5%	51.7%		52.7%	55.8%		52.9%	56.0%		
By Intended Degree										
Bachelor's	2,030	1,743	85.9%	2,224	1,877	84.4%	2,364	2,037	86.2%	85.5%
Other	273	234	85.7%	185	167	90.3%	156	136	87.2%	86.0%
By Ethnicity										
African Amer.	225	198	88.0%	255	204	80.0%	219	183	83.6%	84.2%
Hispanic	62	53	85.5%	70	60	85.7%	86	79	91.9%	86.2%
Other	2,016	1,726	85.6%	2,084	1,780	85.4%	2,215	1,911	86.3%	85.6%
Students By Age										
<20	1,989	1,733	87.1%	2,091	1,815	86.8%	2,222	1,939	87.3%	86.9%
20-21	125	93	74.4%	146	111	76.0%	150	115	76.7%	76.8%
22-24	78	62	79.5%	73	50	68.5%	67	51	76.1%	75.9%
25+	111	89	80.2%	99	68	68.7%	81	68	84.0%	79.0%
By Sex										
Male	928	778	83.8%	992	821	82.8%	971	844	86.9%	84.3%
Female	1,375	1,199	87.2%	1,417	1,223	86.3%	1,549	1,329	85.8%	86.4%
By Residency										
Resident	2,246	1,929	85.9%	2,322	1,967	84.7%	2,417	2,081	86.1%	85.6%
Non-Res.	57	48	84.2%	87	77	88.5%	103	92	89.3%	84.4%
By High School Rank										
Top 10%	240	224	93.3%	197	177	89.8%	266	251	94.4%	92.6%
11%-25%	424	374	88.2%	504	443	87.9%	506	450	88.9%	89.1%
26%-50%	781	664	85.0%	775	659	85.0%	829	712	85.9%	85.6%
Bot 50%	584	488	83.6%	576	479	83.2%	517	421	81.4%	82.9%
By GPA in the First Fall Semester										
3.0 - 4.0	898	871	97.0%	942	911	96.7%	1,060	1,014	95.7%	96.0%
2.0 - 2.99	776	730	94.1%	738	689	93.4%	764	717	93.8%	93.9%
< 2.0	629	376	59.8%	729	444	60.9%	696	442	63.5%	60.7%
By SAT Groups										
1200+	156	138	88.5%	188	170	90.4%	199	180	90.5%	89.2%
800-1190	1,466	1,280	87.3%	1,567	1,371	87.5%	1,640	1,430	87.2%	87.3%
400-790	159	140	88.1%	144	116	80.6%	154	133	86.4%	85.6%

University Reporting & Research

East

Persistence to the Second Semester by Cohort Status

	2004 Cohort			2005 Cohort			2006 Cohort			5 Yr Avg.
	began	ret'd	%	began	ret'd	%	began	ret'd	%	
Beginner	406	310	76.4%	372	299	80.4%	278	217	78.1%	75.8%
Transfer	150	127	84.7%	177	122	68.9%	136	104	76.5%	77.1%
Exclusions	0			0			0			
Overall	556	437	78.6%	549	421	76.7%	414	321	77.5%	76.1%

Full-Time Beginners Only (FTB)

	2004 Cohort			2005 Cohort			2006 Cohort			5 Yr Avg.
	began	ret'd	%	began	ret'd	%	began	ret'd	%	
FTB	274	214	78.1%	284	241	84.9%	226	191	84.5%	81.0%
FTB as % of Beginners	67.5%	69.0%		76.3%	80.6%		81.3%	88.0%		
FTB as % of Overall	49.3%	49.0%		51.7%	57.2%		54.6%	59.5%		
By Intended Degree										
Bachelor's	185	147	79.5%	229	189	82.5%	194	161	83.0%	81.8%
Other	89	67	75.3%	55	52	94.5%	32	30	93.8%	79.0%
By Ethnicity										
African Amer.	**	**	90.0%	**	**	80.0%	**	**	50.0%	81.1%
Hispanic	**	**	100.0%	**	**	100.0%	**	**	0.0%	100.0%
Other	262	203	77.5%	271	230	84.9%	217	187	86.2%	80.9%
Students By Age										
<20	199	156	78.4%	206	174	84.5%	170	148	87.1%	82.5%
20-21	22	16	72.7%	28	21	75.0%	20	16	80.0%	72.7%
22-24	16	10	62.5%	13	13	100.0%	**	**	57.1%	78.3%
25+	37	32	86.5%	37	33	89.2%	29	23	79.3%	81.0%
By Sex										
Male	88	63	71.6%	105	86	81.9%	90	74	82.2%	74.7%
Female	186	151	81.2%	179	155	86.6%	136	117	86.0%	84.4%
By Residency										
Resident	236	180	76.3%	233	195	83.7%	200	167	83.5%	80.4%
Non-Res.	38	34	89.5%	51	46	90.2%	26	24	92.3%	84.7%
By High School Rank										
Top 10%	**	**	100.0%	14	14	100.0%	**	**	88.9%	97.6%
11%-25%	31	27	87.1%	29	26	89.7%	25	21	84.0%	89.2%
26%-50%	50	47	94.0%	55	50	90.9%	48	45	93.8%	91.3%
Bot 50%	84	58	69.0%	71	53	74.6%	59	49	83.1%	75.2%
By GPA in the First Fall Semester										
3.0 - 4.0	122	114	93.4%	112	110	98.2%	108	106	98.1%	95.0%
2.0 - 2.99	62	56	90.3%	87	82	94.3%	59	56	94.9%	91.4%
< 2.0	90	44	48.9%	85	49	57.6%	59	29	49.2%	52.6%
By SAT Groups										
1200+	**	**	100.0%	**	**	80.0%	**	**	66.7%	75.0%
800-1190	100	81	81.0%	115	98	85.2%	114	104	91.2%	86.3%
400-790	31	23	74.2%	30	29	96.7%	19	18	94.7%	88.1%

University Reporting & Research

Fort Wayne

Persistence to the Second Semester by Cohort Status

	2004 Cohort			2005 Cohort			2006 Cohort			5 Yr Avg.
	began	ret'd	%	began	ret'd	%	began	ret'd	%	
Beginner	993	810	81.6%	893	700	78.4%	919	741	80.6%	81.3%
Transfer	537	401	74.7%	690	531	77.0%	673	492	73.1%	76.0%
Exclusions	0			0			0			
Overall	1,530	1,211	79.2%	1,583	1,231	77.8%	1,592	1,233	77.4%	79.4%

Full-Time Beginners Only (FTB)

	2004 Cohort			2005 Cohort			2006 Cohort			5 Yr Avg.
	began	ret'd	%	began	ret'd	%	began	ret'd	%	
FTB	839	715	85.2%	807	640	79.3%	823	679	82.5%	83.7%
FTB as % of Beginners	84.5%	88.3%		90.4%	91.4%		89.6%	91.6%		
FTB as % of Overall	54.8%	59.0%		51.0%	52.0%		51.7%	55.1%		
By Intended Degree										
Bachelor's	723	614	84.9%	797	631	79.2%	807	667	82.7%	83.4%
Other	116	101	87.1%	**	**	90.0%	16	12	75.0%	87.9%
By Ethnicity										
African Amer.	43	32	74.4%	31	16	51.6%	38	29	76.3%	70.0%
Hispanic	14	12	85.7%	27	19	70.4%	29	21	72.4%	83.8%
Other	782	671	85.8%	749	605	80.8%	756	629	83.2%	84.4%
Students By Age										
<20	729	623	85.5%	725	581	80.1%	730	611	83.7%	84.5%
20-21	48	41	85.4%	43	35	81.4%	42	32	76.2%	80.4%
22-24	30	24	80.0%	17	10	58.8%	21	16	76.2%	74.4%
25+	32	27	84.4%	22	14	63.6%	30	20	66.7%	81.0%
By Sex										
Male	341	291	85.3%	334	263	78.7%	387	321	82.9%	82.9%
Female	498	424	85.1%	473	377	79.7%	436	358	82.1%	84.3%
By Residency										
Resident	811	693	85.5%	775	614	79.2%	792	656	82.8%	83.8%
Non-Res.	28	22	78.6%	32	26	81.3%	31	23	74.2%	80.7%
By High School Rank										
Top 10%	59	48	81.4%	50	45	90.0%	58	51	87.9%	90.9%
11%-25%	122	109	89.3%	120	99	82.5%	120	103	85.8%	87.2%
26%-50%	242	211	87.2%	236	194	82.2%	234	192	82.1%	85.8%
Bot 50%	257	209	81.3%	258	193	74.8%	268	215	80.2%	80.0%
By GPA in the First Fall Semester										
3.0 - 4.0	326	308	94.5%	291	270	92.8%	310	288	92.9%	93.7%
2.0 - 2.99	255	233	91.4%	239	210	87.9%	244	227	93.0%	91.5%
< 2.0	258	174	67.4%	277	160	57.8%	269	164	61.0%	63.2%
By SAT Groups										
1200+	47	41	87.2%	28	25	89.3%	24	18	75.0%	87.1%
800-1190	585	498	85.1%	201	163	81.1%	226	194	85.8%	85.2%
400-790	72	57	79.2%	27	18	66.7%	27	22	81.5%	81.3%

University Reporting & Research

Fort Wayne - IU Students only

Kokomo

Persistence to the Second Semester by Cohort Status

	2004 Cohort			2005 Cohort			2006 Cohort			5 Yr Avg.
	began	ret'd	%	began	ret'd	%	began	ret'd	%	
Beginner	466	374	80.3%	476	364	76.5%	384	295	76.8%	78.4%
Transfer	236	181	76.7%	211	150	71.1%	204	169	82.8%	74.6%
Exclusions	0			0			0			
Overall	702	555	79.1%	687	514	74.8%	588	464	78.9%	77.4%

Full-Time Beginners Only (FTB)

	2004 Cohort			2005 Cohort			2006 Cohort			5 Yr Avg.
	began	ret'd	%	began	ret'd	%	began	ret'd	%	
FTB	358	294	82.1%	382	314	82.2%	331	258	77.9%	82.3%
FTB as % of Beginners	76.8%	78.6%		80.3%	86.3%		86.2%	87.5%		
FTB as % of Overall	51.0%	53.0%		55.6%	61.1%		56.3%	55.6%		
By Intended Degree										
Bachelor's	292	239	81.8%	366	301	82.2%	323	253	78.3%	82.5%
Other	66	55	83.3%	16	13	81.3%	**	**	62.5%	81.0%
By Ethnicity										
African Amer.	**	**	77.8%	**	**	42.9%	11	6	54.5%	70.3%
Hispanic	**	**	66.7%	**	**	0.0%	**	**	66.7%	73.3%
Other	346	285	82.4%	374	311	83.2%	314	248	79.0%	82.7%
Students By Age										
<20	312	259	83.0%	321	267	83.2%	280	220	78.6%	83.1%
20-21	18	13	72.2%	25	20	80.0%	22	15	68.2%	75.2%
22-24	12	9	75.0%	11	7	63.6%	**	**	60.0%	76.5%
25+	16	13	81.3%	25	20	80.0%	19	17	89.5%	81.2%
By Sex										
Male	120	95	79.2%	131	106	80.9%	121	88	72.7%	78.9%
Female	238	199	83.6%	251	208	82.9%	210	170	81.0%	83.9%
By Residency										
Resident	358	294	82.1%	381	313	82.2%	328	255	77.7%	82.4%
Non-Res.	**	**	n/a	**	**	100.0%	**	**	100.0%	55.6%
By High School Rank										
Top 10%	15	13	86.7%	20	20	100.0%	19	17	89.5%	94.3%
11%-25%	70	64	91.4%	55	44	80.0%	60	53	88.3%	86.8%
26%-50%	124	105	84.7%	124	107	86.3%	101	79	78.2%	84.2%
Bot 50%	120	92	76.7%	147	116	78.9%	109	75	68.8%	77.6%
By GPA in the First Fall Semester										
3.0 - 4.0	105	100	95.2%	104	97	93.3%	85	80	94.1%	94.6%
2.0 - 2.99	144	137	95.1%	139	130	93.5%	120	107	89.2%	92.4%
< 2.0	109	57	52.3%	139	87	62.6%	126	71	56.3%	57.9%
By SAT Groups										
1200+	15	9	60.0%	22	17	77.3%	17	14	82.4%	82.3%
800-1190	234	202	86.3%	249	216	86.7%	210	171	81.4%	85.3%
400-790	25	18	72.0%	24	21	87.5%	33	25	75.8%	78.7%

University Reporting & Research

Northwest

Persistence to the Second Semester by Cohort Status

	2004 Cohort			2005 Cohort			2006 Cohort			5 Yr Avg.
	began	ret'd	%	began	ret'd	%	began	ret'd	%	
Beginner	762	581	76.2%	604	457	75.7%	675	485	71.9%	78.4%
Transfer	329	252	76.6%	350	280	80.0%	345	274	79.4%	78.0%
Exclusions	0			0			2			
Overall	1,091	833	76.4%	954	737	77.3%	1,020	759	74.4%	78.3%

Full-Time Beginners Only (FTB)

	2004 Cohort			2005 Cohort			2006 Cohort			5 Yr Avg.
	began	ret'd	%	began	ret'd	%	began	ret'd	%	
FTB	605	487	80.5%	472	368	78.0%	561	416	74.2%	81.2%
FTB as % of Beginners	79.4%	83.8%		78.1%	80.5%		83.1%	85.8%		
FTB as % of Overall	55.5%	58.5%		49.5%	49.9%		55.0%	54.8%		
By Intended Degree										
Bachelor's	475	385	81.1%	413	318	77.0%	483	359	74.3%	80.7%
Other	130	102	78.5%	59	50	84.7%	78	57	73.1%	83.2%
By Ethnicity										
African Amer.	108	74	68.5%	81	65	80.2%	84	54	64.3%	76.4%
Hispanic	72	61	84.7%	61	49	80.3%	78	60	76.9%	81.6%
Other	425	352	82.8%	330	254	77.0%	399	302	75.7%	82.4%
Students By Age										
<20	461	387	83.9%	366	292	79.8%	421	321	76.2%	83.2%
20-21	60	37	61.7%	39	25	64.1%	50	31	62.0%	70.2%
22-24	28	20	71.4%	22	16	72.7%	33	20	60.6%	73.3%
25+	56	43	76.8%	45	35	77.8%	57	44	77.2%	81.5%
By Sex										
Male	229	181	79.0%	192	148	77.1%	209	144	68.9%	79.0%
Female	376	306	81.4%	280	220	78.6%	352	272	77.3%	82.6%
By Residency										
Resident	597	482	80.7%	466	365	78.3%	552	414	75.0%	81.3%
Non-Res.	**	**	62.5%	**	**	50.0%	**	**	22.2%	72.2%
By High School Rank										
Top 10%	31	29	93.5%	28	28	100.0%	46	37	80.4%	91.6%
11%-25%	86	72	83.7%	72	63	87.5%	75	66	88.0%	88.1%
26%-50%	162	140	86.4%	122	96	78.7%	126	101	80.2%	85.1%
Bot 50%	255	199	78.0%	201	146	72.6%	227	155	68.3%	77.5%
By GPA in the First Fall Semester										
3.0 - 4.0	201	194	96.5%	156	151	96.8%	192	182	94.8%	95.9%
2.0 - 2.99	188	170	90.4%	157	136	86.6%	178	153	86.0%	91.4%
< 2.0	216	123	56.9%	159	81	50.9%	191	81	42.4%	55.8%
By SAT Groups										
1200+	14	14	100.0%	19	16	84.2%	15	14	93.3%	91.9%
800-1190	368	306	83.2%	264	215	81.4%	304	242	79.6%	84.0%
400-790	106	78	73.6%	77	60	77.9%	96	70	72.9%	76.8%

University Reporting & Research

South Bend

Persistence to the Second Semester by Cohort Status

	2004 Cohort			2005 Cohort			2006 Cohort			5 Yr Avg.
	began	ret'd	%	began	ret'd	%	began	ret'd	%	
Beginner	910	714	78.5%	1,006	794	78.9%	987	755	76.5%	79.5%
Transfer	549	413	75.2%	529	414	78.3%	544	408	75.0%	77.1%
Exclusions	0			0			0			
Overall	1,459	1,127	77.2%	1,535	1,208	78.7%	1,531	1,163	76.0%	78.7%

Full-Time Beginners Only (FTB)

	2004 Cohort			2005 Cohort			2006 Cohort			5 Yr Avg.
	began	ret'd	%	began	ret'd	%	began	ret'd	%	
FTB	706	586	83.0%	806	659	81.8%	776	619	79.8%	83.9%
FTB as % of Beginners	77.6%	82.1%		80.1%	83.0%		78.6%	82.0%		
FTB as % of Overall	48.4%	52.0%		52.5%	54.6%		50.7%	53.2%		
By Intended Degree										
Bachelor's	628	522	83.1%	735	610	83.0%	705	562	79.7%	84.0%
Other	78	64	82.1%	71	49	69.0%	71	57	80.3%	82.4%
By Ethnicity										
African Amer.	42	33	78.6%	47	34	72.3%	41	31	75.6%	79.5%
Hispanic	27	22	81.5%	32	28	87.5%	36	33	91.7%	85.0%
Other	637	531	83.4%	727	597	82.1%	699	555	79.4%	84.1%
Students By Age										
<20	565	472	83.5%	682	568	83.3%	653	533	81.6%	85.2%
20-21	59	51	86.4%	46	30	65.2%	57	40	70.2%	76.3%
22-24	38	28	73.7%	36	26	72.2%	26	14	53.8%	78.0%
25+	44	35	79.5%	42	35	83.3%	40	32	80.0%	80.6%
By Sex										
Male	274	219	79.9%	340	282	82.9%	347	274	79.0%	82.6%
Female	432	367	85.0%	466	377	80.9%	429	345	80.4%	84.7%
By Residency										
Resident	685	573	83.6%	783	645	82.4%	740	590	79.7%	84.2%
Non-Res.	21	13	61.9%	23	14	60.9%	36	29	80.6%	73.4%
By High School Rank										
Top 10%	43	36	83.7%	43	39	90.7%	39	32	82.1%	89.2%
11%-25%	104	93	89.4%	111	95	85.6%	112	101	90.2%	89.8%
26%-50%	208	177	85.1%	232	195	84.1%	223	181	81.2%	84.6%
Bot 50%	195	150	76.9%	237	184	77.6%	237	180	75.9%	81.8%
By GPA in the First Fall Semester										
3.0 - 4.0	233	223	95.7%	234	226	96.6%	258	248	96.1%	95.9%
2.0 - 2.99	225	207	92.0%	239	225	94.1%	231	207	89.6%	93.2%
< 2.0	248	156	62.9%	333	208	62.5%	287	164	57.1%	63.0%
By SAT Groups										
1200+	33	29	87.9%	35	29	82.9%	27	23	85.2%	85.4%
800-1190	468	392	83.8%	539	451	83.7%	492	407	82.7%	86.3%
400-790	58	50	86.2%	68	54	79.4%	87	75	86.2%	83.4%

University Reporting & Research

Southeast

Persistence to the Second Semester by Cohort Status

	2004 Cohort			2005 Cohort			2006 Cohort			5 Yr Avg.
	began	ret'd	%	began	ret'd	%	began	ret'd	%	
Beginner	815	667	81.8%	753	605	80.3%	833	671	80.6%	82.8%
Transfer	392	313	79.8%	398	333	83.7%	498	406	81.5%	81.4%
Exclusions	0			0			0			
Overall	1,207	980	81.2%	1,151	938	81.5%	1,331	1,077	80.9%	82.4%

Full-Time Beginners Only (FTB)

	2004 Cohort			2005 Cohort			2006 Cohort			5 Yr Avg.
	began	ret'd	%	began	ret'd	%	began	ret'd	%	
FTB	715	602	84.2%	665	542	81.5%	729	602	82.6%	85.3%
FTB as % of Beginners	87.7%	90.3%		88.3%	89.6%		87.5%	89.7%		
FTB as % of Overall	59.2%	61.4%		57.8%	57.8%		54.8%	55.9%		
By Intended Degree										
Bachelor's	697	587	84.2%	657	535	81.4%	721	595	82.5%	85.2%
Other	18	15	83.3%	**	**	87.5%	**	**	87.5%	90.0%
By Ethnicity										
African Amer.	16	11	68.8%	19	13	68.4%	27	21	77.8%	74.4%
Hispanic	12	9	75.0%	12	10	83.3%	15	12	80.0%	82.1%
Other	687	582	84.7%	634	519	81.9%	687	569	82.8%	85.6%
Students By Age										
<20	627	529	84.4%	597	489	81.9%	652	545	83.6%	85.7%
20-21	39	33	84.6%	34	26	76.5%	37	29	78.4%	86.1%
22-24	23	20	87.0%	12	9	75.0%	21	13	61.9%	78.6%
25+	26	20	76.9%	22	18	81.8%	19	15	78.9%	80.1%
By Sex										
Male	295	235	79.7%	256	198	77.3%	298	246	82.6%	83.6%
Female	420	367	87.4%	409	344	84.1%	431	356	82.6%	86.4%
By Residency										
Resident	636	540	84.9%	576	470	81.6%	634	526	83.0%	85.8%
Non-Res.	79	62	78.5%	89	72	80.9%	95	76	80.0%	81.2%
By High School Rank										
Top 10%	49	46	93.9%	37	36	97.3%	68	64	94.1%	95.1%
11%-25%	150	137	91.3%	93	81	87.1%	123	114	92.7%	92.8%
26%-50%	212	173	81.6%	178	143	80.3%	249	199	79.9%	84.5%
Bot 50%	198	155	78.3%	135	98	72.6%	182	138	75.8%	79.9%
By GPA in the First Fall Semester										
3.0 - 4.0	292	279	95.5%	230	220	95.7%	238	231	97.1%	96.1%
2.0 - 2.99	217	197	90.8%	213	196	92.0%	231	211	91.3%	91.7%
< 2.0	206	126	61.2%	222	126	56.8%	260	160	61.5%	63.9%
By SAT Groups										
1200+	17	13	76.5%	27	25	92.6%	33	31	93.9%	92.0%
800-1190	314	267	85.0%	423	356	84.2%	459	375	81.7%	87.1%
400-790	43	35	81.4%	65	47	72.3%	74	61	82.4%	83.4%

University Reporting & Research