



I am pleased to provide you with the latest edition of the Official Retention Report. This report, like its fall predecessors, provides a view on what proportion of student cohorts return to the subsequent fall term. The precedent for the Retention Tracking System and this report grew out of the desire to generate standard and official retention figures for all campuses for self-study and reporting purposes.

As a reminder, a cohort is comprised of those degree-seeking students, beginners or transfers, who are new to an IU campus in the fall or those who began in the previous summer session and re-enrolled in the fall. This cohort definition conforms to the standards required by various external groups for reporting purposes. A student's "home campus" is defined by their first semester enrollment regardless of intercampus transfer. Retention is defined as re-enrollment or receipt of a degree.

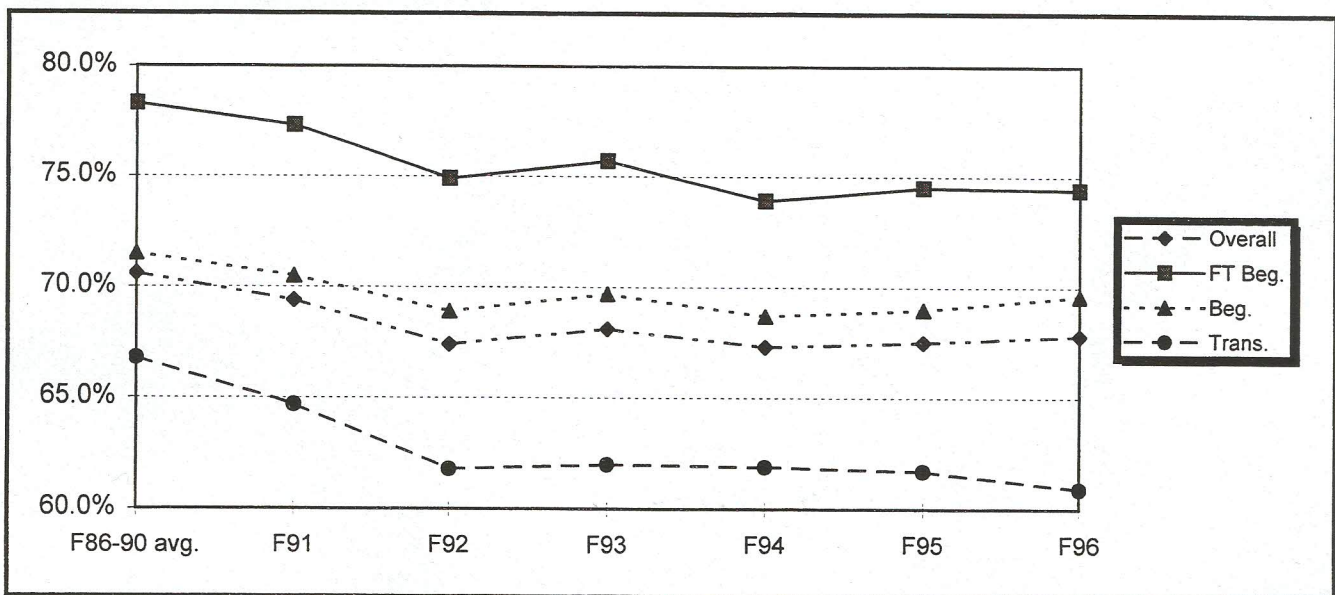
Previous editions of this report provided data on each of the cohorts. With this and future reports, the earliest cohorts will be aggregated to provide a manageable view of the data.

As always, your comments and questions are welcomed.

Persistence to the Second Year - IU

	F86-90 avg.	F91	F92	F93	F94	F95	F96
IU	70.6%	69.4%	67.4%	68.1%	67.3%	67.5%	67.8%
Bloomington	86.2%	86.4%	85.8%	86.2%	84.1%	85.1%	86.7%
Indianapolis	61.2%	59.7%	56.0%	56.8%	56.8%	58.1%	56.7%
East	51.1%	53.4%	52.0%	52.1%	48.4%	48.3%	54.0%
Fort Wayne	58.6%	59.3%	55.3%	56.7%	54.5%	56.8%	54.1%
Kokomo	55.7%	53.2%	50.7%	50.4%	46.1%	49.7%	48.4%
Northwest	59.2%	61.6%	56.7%	58.2%	60.8%	56.9%	56.9%
South Bend	56.1%	58.7%	57.4%	57.6%	56.7%	54.2%	55.3%
Southeast	59.1%	59.5%	55.8%	54.5%	53.5%	57.8%	60.2%

Persistence by Entry Status



Persistence to the Second Year - IU

n=	72,917	15,644	15,873	14,881	14,784	14,935	15,226
	F86-90 avg.	F91	F92	F93	F94	F95	F96
Overall	70.6%	69.4%	67.4%	68.1%	67.3%	67.5%	67.8%
By Entry Status (1)							
Beg.	71.5%	70.5%	68.9%	69.7%	68.7%	69.0%	69.6%
Trans.	66.8%	64.7%	61.8%	62.0%	61.9%	61.7%	60.9%
Full-Time Beg.	78.3%	77.3%	74.9%	75.7%	73.9%	74.5%	74.4%
By Student Type							
Trad.	79.7%	78.7%	75.7%	77.0%	74.8%	75.0%	74.9%
N. Maj. (2)	58.5%	57.1%	55.6%	53.6%	51.9%	52.2%	52.4%
By Course Load in the First Fall Semester							
FT	77.9%	76.8%	74.1%	75.2%	73.3%	73.9%	73.5%
< FT	50.0%	49.0%	47.4%	46.3%	45.5%	44.7%	46.2%
By Ethnicity							
Am. Ind.	60.8%	65.0%	51.2%	59.1%	57.1%	67.6%	72.7%
Asian	80.4%	78.3%	75.6%	80.7%	79.6%	79.0%	81.1%
Black	57.4%	57.5%	56.5%	56.2%	57.5%	56.1%	58.3%
Hispanic	66.8%	59.5%	60.5%	62.2%	59.4%	63.9%	60.9%
Other	71.5%	70.3%	68.3%	68.9%	68.0%	68.3%	68.4%
By Age							
<25	72.7%	71.7%	69.3%	70.3%	69.1%	69.4%	69.7%
25-29	55.5%	56.7%	55.2%	52.2%	54.2%	55.0%	55.5%
30-39	59.9%	58.5%	59.7%	57.3%	54.7%	54.8%	50.5%
>40	55.3%	54.3%	55.6%	54.0%	56.4%	53.3%	54.3%
By Gender							
Male	70.6%	68.4%	66.8%	66.5%	65.9%	66.4%	66.5%
Female	70.7%	70.0%	67.9%	69.3%	68.3%	68.3%	68.7%
By GPA in the First Fall Semester							
3.0 - 4.0	83.3%	82.3%	80.9%	81.5%	82.2%	81.3%	81.7%
2.0 - 2.99	80.6%	79.3%	77.6%	77.5%	77.0%	77.5%	78.7%
< 2.0	38.4%	39.2%	37.6%	37.1%	35.5%	35.3%	35.4%
By SAT Groups*							
1400+	87.0%	85.3%	92.5%	92.3%	88.9%	93.1%	88.7%
1200-1399	88.0%	86.3%	87.5%	89.4%	87.6%	88.3%	85.5%
1000-1199	84.6%	84.1%	82.6%	82.8%	80.3%	80.9%	81.0%
800-999	76.4%	75.8%	73.1%	73.7%	73.4%	74.7%	68.6%
600-799	64.9%	63.3%	60.2%	61.9%	60.9%	63.3%	55.7%
400-599	52.9%	53.1%	48.4%	54.5%	52.5%	55.0%	47.6%
No SAT	55.4%	57.5%	56.4%	55.6%	55.9%	55.6%	57.7%

* SAT groups on the campus pages are collapsed to insure adequate representation within the cells.

Student Information & Fiscal Services	Poplars 603	(812) 855-9893
Todd Schmitz, Director, Reporting & Research Services		Date Produced: 11/5/97
Schmitz@indiana.edu		

Bloomington

Persistence to the Second Year

n=	31,418	5,955	6,252	5,972	6,178	5,835	5,887
	F86-90 avg.	F91	F92	F93	F94	F95	F96
Overall	86.2%	86.4%	85.8%	86.2%	84.1%	85.1%	86.7%
By Entry Status (1)							
Beg.	86.9%	87.1%	86.5%	86.9%	84.5%	85.6%	87.1%
Trans.	81.0%	81.3%	80.7%	80.4%	80.5%	80.2%	83.1%
FT-Beg.	87.1%	87.3%	86.6%	86.9%	84.7%	85.8%	87.3%
By Student Type							
Trad.	87.2%	87.4%	86.6%	86.8%	84.7%	85.6%	87.3%
N. Maj. (2)	76.2%	71.0%	72.2%	72.3%	67.9%	69.5%	70.3%
By Course Load in the First Fall Semester							
FT	86.5%	86.7%	86.0%	86.4%	84.3%	85.4%	87.0%
< FT	63.4%	61.7%	70.8%	65.6%	62.5%	61.3%	64.1%
By Ethnicity							
Black	70.5%	74.7%	73.6%	73.9%	70.7%	68.1%	81.7%
Hispanic	78.9%	77.8%	82.9%	79.6%	68.1%	81.8%	80.8%
Other	87.2%	87.1%	86.6%	87.0%	85.2%	86.1%	87.1%
By Age							
<25	86.4%	86.6%	85.9%	86.3%	84.4%	85.3%	86.9%
25-29	71.2%	83.3%	79.2%	76.0%	61.7%	68.4%	79.6%
30-39	70.7%	61.4%	78.4%	75.0%	69.7%	74.5%	57.1%
>40	65.2%	63.6%	92.9%	**	70.0%	56.3%	63.6%
By Gender							
Male	86.7%	86.5%	86.1%	85.8%	83.2%	84.8%	86.7%
Female	85.8%	86.3%	85.6%	86.5%	84.8%	85.2%	86.7%
By GPA in the First Fall Semester							
3.0 - 4.0	92.8%	92.9%	91.6%	93.3%	92.1%	91.8%	93.2%
2.0 - 2.99	90.3%	88.5%	89.6%	88.7%	88.6%	89.3%	90.8%
< 2.0	55.5%	62.6%	62.0%	61.9%	53.6%	54.2%	57.1%
By SAT Groups							
1200+	90.5%	88.9%	90.6%	92.2%	89.9%	90.9%	88.9%
800-1199	88.3%	88.7%	87.6%	87.7%	85.8%	85.8%	87.7%
400-799	78.6%	80.1%	78.2%	80.5%	78.4%	81.6%	79.9%
No SAT	74.0%	76.7%	79.1%	78.8%	76.6%	79.1%	82.5%

** Cell contains fewer than 10 students.

- (1) Entry status for this report is derived by combining codes to identify "true beginners." Beginners cannot have an entry class beyond the second year (sophomore status).
- (2) "New Majority" students are defined by age as freshman > 22, sophomores > 23, juniors > 24, seniors >25, or traditional age students who are attending less than full-time.

Indianapolis

Persistence to the Second Year

n=	16,789	3,765	3,670	3,336	3,069	3,802	4,192
	F86-90 avg.	F91	F92	F93	F94	F95	F96
Overall	61.2%	59.7%	56.0%	56.8%	56.8%	58.1%	56.7%
By Entry Status (1)							
Beg.	60.4%	59.6%	54.9%	56.0%	56.0%	57.7%	56.3%
Trans.	63.6%	60.3%	58.4%	58.5%	58.5%	59.0%	57.4%
FTB (1)	67.6%	65.0%	58.8%	61.7%	62.0%	62.6%	61.6%
By Student Type							
Trad.	67.6%	63.8%	57.4%	62.0%	60.9%	62.9%	61.1%
N. Maj. (2)	58.4%	57.7%	55.3%	53.7%	53.6%	54.1%	52.4%
By Course Load in the First Fall Semester							
FT	68.5%	66.1%	60.4%	63.8%	63.3%	64.5%	62.5%
< FT	53.8%	52.1%	50.1%	48.0%	46.6%	47.3%	45.9%
By Ethnicity							
Black	50.0%	53.0%	45.5%	43.4%	51.8%	51.0%	54.4%
Hispanic	59.9%	56.4%	42.4%	57.1%	53.8%	43.6%	54.7%
Other	62.3%	60.5%	57.3%	57.9%	57.4%	59.2%	57.0%
By Age							
<25	61.4%	59.4%	54.7%	56.7%	56.3%	58.3%	57.1%
25-29	57.8%	57.5%	59.6%	51.8%	56.5%	58.3%	60.4%
30-39	63.3%	64.8%	63.4%	63.0%	61.0%	57.7%	49.1%
>40	61.7%	59.6%	58.7%	56.0%	61.5%	53.4%	53.0%
By Gender							
Male	58.7%	56.4%	52.7%	53.7%	54.0%	55.1%	54.9%
Female	63.1%	62.1%	58.5%	59.2%	58.9%	60.4%	58.0%
By GPA in the First Fall Semester							
3.0 - 4.0	77.1%	76.8%	74.9%	73.6%	75.2%	74.1%	72.5%
2.0 - 2.99	72.7%	73.4%	67.1%	67.3%	65.4%	70.0%	69.7%
< 2.0	35.0%	34.8%	32.1%	28.9%	29.6%	29.8%	30.5%
By SAT Groups							
1200+	70.9%	62.5%	51.4%	64.3%	79.5%	65.8%	66.0%
800-1199	65.9%	64.8%	61.0%	62.5%	59.3%	65.6%	62.4%
400-799	60.8%	58.5%	52.8%	54.9%	57.6%	58.4%	52.6%
No SAT	54.8%	55.6%	54.1%	52.9%	54.2%	54.0%	53.1%

** Cell contains fewer than 10 students.

- (1) Entry status for this report is derived by combining codes to identify "true beginners." Beginners cannot have an entry class beyond the second year (sophomore status).
- (2) "New Majority" students are defined by age as freshman > 22, sophomores > 23, juniors > 24, seniors >25, or traditional age students who are attending less than full-time.

East

Persistence to the Second Year

n=	2,118	504	563	522	500	540	506
	F86-90 avg.	F91	F92	F93	F94	F95	F96
Overall	51.1%	53.4%	52.0%	52.1%	48.4%	48.3%	54.0%
By Entry Status (1)							
Beg.	50.1%	53.0%	50.8%	49.7%	47.8%	46.9%	53.1%
Trans.	57.1%	55.1%	57.6%	65.8%	51.2%	54.2%	56.9%
FTB (1)	59.8%	59.5%	54.8%	55.8%	51.7%	57.9%	58.1%
By Student Type							
Trad.	50.3%	51.9%	46.4%	53.5%	48.3%	54.7%	57.4%
N. Maj. (2)	51.3%	53.8%	54.3%	51.5%	48.4%	45.1%	51.9%
By Course Load in the First Fall Semester							
FT	60.6%	61.0%	55.9%	57.8%	52.1%	58.2%	59.1%
< FT	44.1%	45.0%	47.0%	45.4%	43.5%	37.7%	48.1%
By Ethnicity							
Black	41.7%	33.3%	38.1%	29.4%	30.8%	25.9%	40.0%
Hispanic	**	**	**	**	**	**	**
Other	51.2%	54.0%	52.2%	53.1%	48.9%	49.6%	54.3%
By Age							
<25	48.7%	50.6%	47.4%	50.3%	47.8%	49.5%	54.5%
25-29	51.7%	61.4%	65.4%	58.5%	42.1%	43.5%	54.7%
30-39	57.7%	53.8%	64.6%	54.3%	46.2%	47.4%	47.5%
>40	55.2%	66.7%	53.3%	58.6%	65.7%	44.7%	60.0%
By Gender							
Male	46.1%	48.2%	46.7%	44.2%	48.8%	49.0%	47.2%
Female	53.7%	55.9%	54.2%	56.6%	50.5%	48.0%	57.7%
By GPA in the First Fall Semester							
3.0 - 4.0	63.9%	70.0%	67.5%	70.0%	64.3%	68.4%	72.9%
2.0 - 2.99	63.6%	72.3%	71.8%	59.7%	57.7%	61.2%	64.7%
< 2.0	29.2%	28.0%	24.7%	31.3%	30.1%	22.7%	31.9%
By SAT Groups							
1200+	**	**	**	**	**	**	**
800-1199	60.8%	51.2%	56.6%	60.0%	51.3%	64.4%	59.7%
400-799	50.9%	52.3%	51.4%	54.1%	55.3%	54.0%	53.5%
No SAT	48.2%	54.5%	50.2%	47.3%	44.6%	40.9%	50.7%

** Cell contains fewer than 10 students.

(1) Entry status for this report is derived by combining codes to identify "true beginners." Beginners cannot have an entry class beyond the second year (sophomore status).

(2) "New Majority" students are defined by age as freshman > 22, sophomores > 23, juniors > 24, seniors >25, or traditional age students who are attending less than full-time.

Fort Wayne (IU students only)

Persistence to the Second Year

n=	5,360	1,190	1,101	1,056	1,279	1,237	1,275
	F86-90 avg.	F91	F92	F93	F94	F95	F96
Overall	58.6%	59.3%	55.3%	56.7%	54.5%	56.8%	54.1%
By Entry Status (1)							
Beg.	59.9%	59.7%	57.1%	58.3%	56.6%	58.1%	55.1%
Trans.	55.8%	58.4%	51.9%	53.2%	49.6%	54.5%	52.2%
FTB (1)	65.3%	65.1%	63.2%	65.7%	61.6%	62.2%	58.4%
By Student Type							
Trad.	62.6%	63.4%	58.2%	61.0%	61.9%	61.0%	58.4%
N. Maj. (2)	56.2%	56.5%	53.5%	53.1%	47.0%	52.5%	49.1%
By Course Load in the First Fall Semester							
FT	65.7%	66.8%	62.7%	63.7%	61.6%	62.3%	58.8%
< FT	46.0%	45.9%	41.3%	43.1%	38.8%	45.2%	42.7%
By Ethnicity							
Black	46.3%	37.1%	41.7%	43.2%	50.8%	57.7%	41.2%
Hispanic	56.5%	63.6%	27.3%	68.8%	48.5%	63.6%	62.5%
Other	58.9%	59.9%	55.9%	57.0%	54.8%	56.7%	54.6%
By Age							
<25	60.4%	61.8%	57.2%	56.9%	57.1%	58.5%	54.9%
25-29	48.9%	47.9%	41.9%	57.8%	39.8%	48.0%	50.0%
30-39	57.0%	53.7%	51.9%	52.7%	44.7%	47.5%	52.7%
>40	44.9%	43.2%	59.1%	57.8%	46.9%	60.5%	46.3%
By Gender							
Male	58.5%	58.6%	57.9%	49.3%	50.5%	55.8%	51.6%
Female	58.6%	59.8%	53.8%	61.3%	57.4%	57.5%	55.8%
By GPA in the First Fall Semester							
3.0 - 4.0	70.3%	69.4%	65.2%	70.2%	67.2%	68.4%	68.5%
2.0 - 2.99	69.2%	70.9%	66.8%	67.2%	65.7%	67.1%	65.9%
< 2.0	32.6%	36.5%	32.7%	29.3%	33.0%	34.4%	29.3%
By SAT Groups							
1200+	69.1%	66.7%	90.5%	75.0%	**	72.7%	70.0%
800-1199	67.9%	65.7%	60.8%	62.1%	61.4%	61.8%	60.1%
400-799	58.5%	60.0%	53.1%	54.5%	58.3%	57.9%	49.1%
No SAT	47.3%	48.8%	47.2%	49.8%	43.6%	51.8%	48.8%

** Cell contains fewer than 10 students.

- (1) Entry status for this report is derived by combining codes to identify "true beginners." Beginners cannot have an entry class beyond the second year (sophomore status).
- (2) "New Majority" students are defined by age as freshman > 22, sophomores > 23, juniors > 24, seniors > 25, or traditional age students who are attending less than full-time.

Kokomo

Persistence to the Second Year

n=	3,257	770	807	708	668	572	572
	F86-90 avg.	F91	F92	F93	F94	F95	F96
Overall	55.7%	53.2%	50.7%	50.4%	46.1%	49.7%	48.4%
By Entry Status (1)							
Beg.	55.3%	53.4%	51.4%	52.1%	45.9%	50.0%	48.4%
Trans.	57.4%	52.7%	48.0%	42.0%	47.2%	48.1%	48.4%
FTB (1)	64.3%	60.0%	58.6%	59.4%	52.9%	56.2%	48.6%
By Student Type							
Trad.	56.0%	56.4%	50.3%	51.7%	49.6%	53.0%	49.1%
N. Maj. (2)	55.7%	52.2%	50.8%	49.9%	44.2%	47.6%	47.8%
By Course Load in the First Fall Semester							
FT	64.6%	60.1%	58.1%	59.0%	51.5%	56.2%	48.3%
< FT	47.8%	47.0%	44.4%	41.4%	39.5%	41.2%	48.7%
By Ethnicity							
Black	48.8%	28.6%	58.8%	27.3%	29.4%	47.4%	33.3%
Hispanic	62.5%	45.5%	50.0%	**	70.0%	**	**
Other	55.9%	53.8%	50.5%	50.7%	46.2%	50.0%	49.2%
By Age							
<25	54.1%	53.7%	48.9%	49.3%	45.0%	50.2%	47.5%
25-29	56.0%	52.5%	56.7%	47.1%	56.5%	44.0%	37.9%
30-39	60.3%	55.8%	51.0%	57.1%	49.2%	52.2%	57.5%
>40	63.8%	43.8%	62.5%	53.6%	42.9%	46.7%	73.3%
By Gender							
Male	52.2%	46.8%	44.9%	41.1%	39.0%	47.1%	40.4%
Female	57.5%	56.9%	53.5%	55.2%	49.8%	51.1%	52.3%
By GPA in the First Fall Semester							
3.0 - 4.0	70.6%	66.3%	69.1%	67.8%	69.6%	67.1%	65.4%
2.0 - 2.99	66.8%	62.0%	60.5%	59.7%	55.7%	59.6%	58.8%
< 2.0	30.2%	27.6%	22.5%	24.7%	17.7%	22.7%	12.8%
By SAT Groups							
1200+	72.7%	**	**	**	**	**	**
800-1199	61.8%	62.1%	53.1%	53.8%	53.2%	59.4%	54.9%
400-799	54.9%	50.2%	48.3%	51.0%	40.6%	50.7%	50.0%
No SAT	52.4%	49.9%	50.6%	47.3%	44.6%	44.1%	43.0%

** Cell contains fewer than 10 students.

(1) Entry status for this report is derived by combining codes to identify "true beginners." Beginners cannot have an entry class beyond the second year (sophomore status).

(2) "New Majority" students are defined by age as freshman > 22, sophomores > 23, juniors > 24, seniors >25, or traditional age students who are attending less than full-time.

Northwest

Persistence to the Second Year

n=	4,448	1,211	1,149	1,094	1,054	904	844
	F86-90 avg.	F91	F92	F93	F94	F95	F96
Overall	59.2%	61.6%	56.7%	58.2%	60.8%	56.9%	56.9%
By Entry Status (1)							
Beg.	58.4%	62.7%	57.0%	58.6%	60.4%	56.5%	57.9%
Trans.	63.5%	57.6%	55.9%	57.5%	62.2%	58.3%	53.1%
FTB (1)	64.7%	69.2%	61.3%	62.8%	63.0%	59.9%	62.4%
By Student Type							
Trad.	64.5%	68.3%	58.1%	62.5%	63.2%	58.5%	59.2%
N. Maj. (2)	55.7%	57.6%	55.8%	54.6%	58.1%	54.8%	53.7%
By Course Load in the First Fall Semester							
FT	65.5%	67.7%	62.0%	62.5%	62.7%	60.1%	60.8%
< FT	48.6%	52.2%	47.8%	50.0%	56.4%	48.2%	45.6%
By Ethnicity							
Black	50.3%	56.1%	50.0%	55.7%	55.7%	58.5%	51.2%
Hispanic	55.2%	49.4%	49.5%	48.0%	54.5%	58.2%	52.1%
Other	61.7%	64.0%	59.4%	60.3%	62.9%	56.1%	59.3%
By Age							
<25	60.3%	62.6%	57.9%	59.8%	61.0%	55.7%	57.9%
25-29	54.1%	56.7%	49.0%	49.4%	59.8%	65.5%	49.2%
30-39	58.4%	62.4%	60.8%	57.3%	57.1%	52.5%	51.1%
>40	53.2%	56.1%	44.6%	50.0%	64.3%	72.5%	57.9%
By Gender							
Male	59.4%	59.8%	52.8%	54.8%	56.7%	53.8%	52.0%
Female	59.1%	62.4%	58.8%	60.4%	62.8%	58.4%	59.5%
By GPA in the First Fall Semester							
3.0 - 4.0	76.3%	81.2%	75.2%	76.3%	78.2%	79.4%	76.8%
2.0 - 2.99	73.2%	73.3%	70.5%	70.1%	74.4%	65.4%	70.7%
< 2.0	33.1%	34.3%	28.6%	32.5%	32.4%	31.6%	28.4%
By SAT Groups							
1200+	79.2%	93.8%	**	**	**	**	76.5%
800-1199	69.0%	68.1%	64.5%	65.1%	68.0%	63.0%	61.9%
400-799	56.7%	59.1%	55.6%	58.6%	58.9%	55.4%	51.8%
No SAT	50.9%	56.8%	50.3%	48.5%	53.8%	52.2%	52.2%

** Cell contains fewer than 10 students.

(1) Entry status for this report is derived by combining codes to identify "true beginners." Beginners cannot have an entry class beyond the second year (sophomore status).

(2) "New Majority" students are defined by age as freshman > 22, sophomores > 23, juniors > 24, seniors >25, or traditional age students who are attending less than full-time.

South Bend

Persistence to the Second Year

n=	4,581	1,229	1,229	1,137	1,082	1,109	1,015
	F86-90 avg.	F91	F92	F93	F94	F95	F96
Overall	56.1%	58.7%	57.4%	57.6%	56.7%	54.2%	55.3%
By Entry Status (1)							
Beg.	54.2%	57.1%	56.8%	57.5%	55.1%	53.6%	54.3%
Trans.	60.7%	62.9%	58.6%	57.7%	60.8%	55.7%	58.2%
FTB (1)	60.2%	66.3%	64.0%	64.2%	60.6%	59.2%	57.5%
By Student Type							
Trad.	60.8%	65.6%	59.4%	63.1%	64.0%	60.4%	58.8%
N. Maj. (2)	53.6%	55.0%	56.1%	53.9%	50.5%	47.8%	51.4%
By Course Load in the First Fall Semester							
FT	63.2%	68.3%	64.1%	64.0%	62.8%	61.3%	59.4%
< FT	45.3%	44.6%	46.2%	47.8%	46.1%	38.9%	46.5%
By Ethnicity							
Black	41.8%	37.1%	52.9%	49.3%	52.5%	44.7%	51.5%
Hispanic	53.2%	30.4%	51.9%	40.0%	36.8%	51.9%	34.6%
Other	56.7%	60.4%	57.7%	58.4%	57.3%	55.0%	56.1%
By Age							
<25	56.2%	60.7%	57.8%	59.1%	56.7%	53.8%	56.7%
25-29	55.3%	56.8%	47.5%	50.8%	58.9%	52.4%	47.3%
30-39	56.3%	51.7%	61.7%	56.5%	55.3%	58.9%	50.6%
>40	53.4%	51.4%	60.3%	51.0%	53.7%	55.8%	46.9%
By Gender							
Male	55.7%	55.4%	54.1%	54.8%	58.5%	49.9%	51.6%
Female	56.3%	60.5%	59.4%	59.1%	55.5%	57.1%	57.5%
By GPA in the First Fall Semester							
3.0 - 4.0	72.2%	71.4%	73.0%	72.7%	74.8%	69.6%	68.7%
2.0 - 2.99	69.9%	70.3%	67.5%	70.8%	67.2%	66.6%	68.4%
< 2.0	27.9%	32.0%	28.4%	31.2%	30.5%	32.2%	35.3%
By SAT Groups							
1200+	69.8%	80.0%	**	91.7%	75.0%	92.9%	61.9%
800-1199	62.7%	65.3%	62.0%	63.3%	65.7%	60.2%	62.6%
400-799	53.8%	63.5%	60.0%	59.9%	46.7%	54.0%	51.4%
No SAT	52.8%	53.9%	53.9%	53.1%	54.7%	51.3%	50.1%

** Cell contains fewer than 10 students.

- (1) Entry status for this report is derived by combining codes to identify "true beginners." Beginners cannot have an entry class beyond the second year (sophomore status).
- (2) "New Majority" students are defined by age as freshman > 22, sophomores > 23, juniors > 24, seniors >25, or traditional age students who are attending less than full-time.

Southeast

Persistence to the Second Year

n=	4,946	1,020	1,102	1,056	954	936	935
	F86-90 avg.	F91	F92	F93	F94	F95	F96
Overall	59.1%	59.5%	55.8%	54.5%	53.5%	57.8%	60.2%
By Entry Status (1)							
Beg.	58.7%	58.2%	54.7%	53.8%	52.6%	56.9%	60.4%
Trans.	62.6%	68.9%	62.7%	59.0%	58.1%	62.7%	58.9%
FTB (1)	66.9%	68.6%	60.8%	60.2%	57.0%	66.1%	66.6%
By Student Type							
Trad.	60.4%	64.9%	57.9%	62.4%	56.8%	66.4%	66.1%
N. Maj. (2)	58.5%	56.6%	54.7%	48.8%	50.1%	48.1%	52.3%
By Course Load in the First Fall Semester							
FT	67.0%	69.1%	62.8%	62.0%	58.7%	65.9%	66.8%
< FT	46.0%	41.8%	42.5%	38.3%	41.2%	40.2%	44.3%
By Ethnicity							
Black	51.9%	39.1%	76.5%	38.7%	33.3%	41.7%	42.9%
Hispanic	**	**	**	71.4%	70.0%	**	**
Other	59.3%	60.0%	55.7%	54.8%	53.7%	58.4%	60.5%
By Age							
<25	61.3%	61.7%	58.2%	58.4%	54.6%	60.6%	62.5%
25-29	49.3%	50.7%	48.6%	36.0%	50.0%	50.0%	37.2%
30-39	56.6%	53.0%	51.7%	38.6%	48.8%	47.2%	49.3%
>40	46.3%	54.9%	41.9%	44.9%	46.2%	31.3%	58.5%
By Gender							
Male	58.7%	55.8%	55.3%	55.0%	51.4%	52.0%	55.6%
Female	59.3%	62.0%	56.3%	54.2%	54.9%	61.8%	63.5%
By GPA in the First Fall Semester							
3.0 - 4.0	73.0%	73.5%	70.0%	70.4%	70.3%	74.5%	79.6%
2.0 - 2.99	73.3%	75.0%	68.5%	67.2%	70.9%	70.0%	73.5%
< 2.0	32.7%	26.8%	32.8%	25.5%	26.6%	29.3%	24.8%
By SAT Groups							
1200+	77.8%	**	**	73.3%	90.0%	**	80.0%
800-1199	72.3%	78.8%	69.7%	68.0%	63.8%	73.6%	70.7%
400-799	61.0%	56.3%	52.3%	56.6%	52.6%	61.2%	49.6%
No SAT	50.4%	51.0%	48.6%	42.2%	45.6%	47.2%	50.3%

** Cell contains fewer than 10 students.

- (1) Entry status for this report is derived by combining codes to identify "true beginners." Beginners cannot have an entry class beyond the second year (sophomore status).
- (2) "New Majority" students are defined by age as freshman > 22, sophomores > 23, juniors > 24, seniors >25, or traditional age students who are attending less than full-time.