

SPRING 2016 ENROLLMENT AND COMPLETIONS UPDATE

Board of Trustees
February Meeting, 2016



INDIANA UNIVERSITY

OFFICE OF THE EXECUTIVE VICE PRESIDENT
FOR UNIVERSITY ACADEMIC AFFAIRS

SPRING 2016 ENROLLMENTS

Total Enrollment

Degree Seeking Enrollment

	Heads			Hours			Heads			Hours		
	14-15	15-16	% chg.	14-15	15-16	% chg.	14-15	15-16	% chg.	14-15	15-16	% chg.
BL	43,859	44,546	1.6%	544,300.5	550,573.0	1.2%	40,171	40,759	1.5%	530,322.5	536,372.5	1.1%
IUPUI	28,643	28,322	-1.1%	344,139.0	342,201.0	-0.6%	27,744	27,333	-1.5%	338,946.5	336,458.0	-0.7%
EA	4,016	4,135	3.0%	36,668.0	36,902.0	0.6%	3,132	3,125	-0.2%	33,384.0	33,399.0	0.0%
KO	3,502	3,421	-2.3%	33,798.0	34,069.0	0.8%	2,596	2,612	0.6%	30,857.0	31,371.0	1.7%
NW	5,122	4,871	-4.9%	52,036.0	49,515.0	-4.8%	4,380	4,042	-7.7%	48,847.0	45,847.0	-6.1%
SB	6,760	6,401	-5.3%	64,878.0	62,820.0	-3.2%	5,386	5,143	-4.5%	59,784.0	58,025.0	-2.9%
SE	5,930	5,615	-5.3%	60,510.5	58,246.5	-3.7%	5,495	5,208	-5.2%	58,793.5	56,554.5	-3.8%
IU Total	97,832	97,311	-0.5%	1,136,330.0	1,134,326.5	-0.2%	88,904	88,222	-0.8%	1,100,934.5	1,098,027.0	-0.3%
FW	6,745	6,383	-5.4%	58,418.0	54,753.0	-6.3%	4,483	4,190	-6.5%	50,776.0	47,130.0	-7.2%
IU w/ FW	104,577	103,694	-0.8%	1,194,748.0	1,189,079.5	-0.5%	93,387	92,412	-1.0%	1,151,710.5	1,145,157.0	-0.6%

FW - IU students only

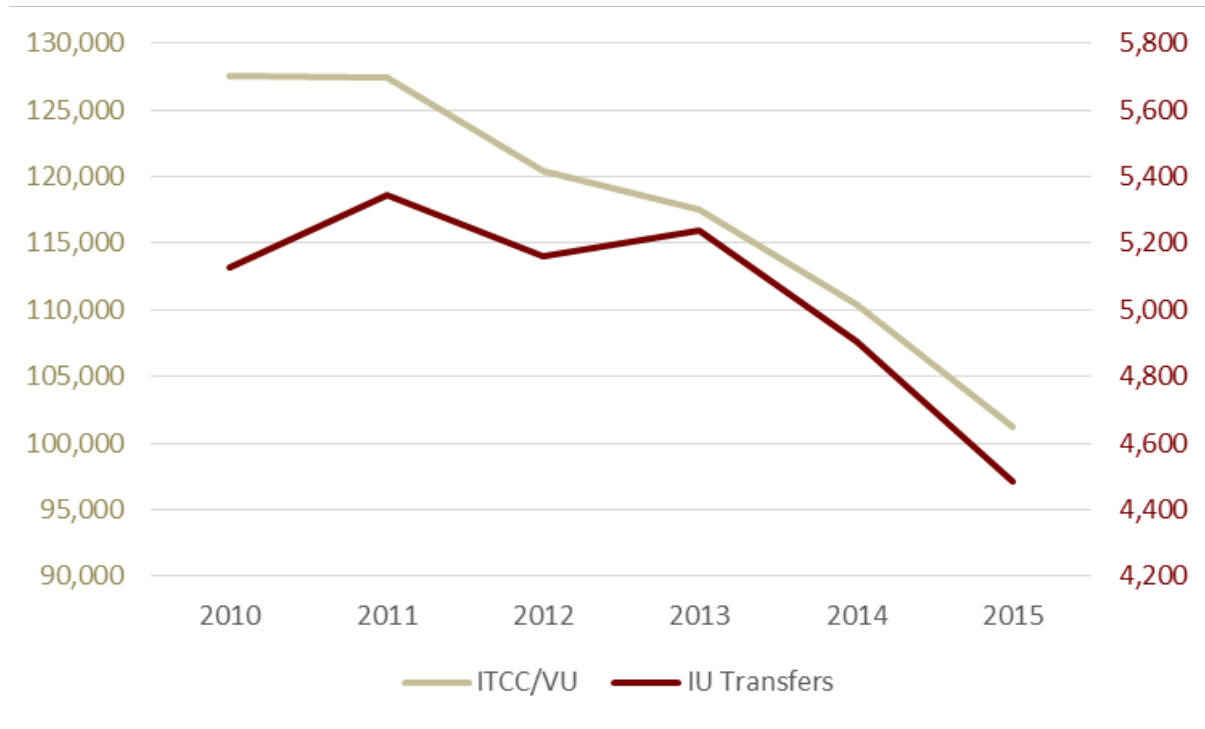
Bold indicates record

DEMOGRAPHIC CHALLENGES

Overall Populations of 18 Year Olds

	2010 Census	2011 Est	2012 Est	2013 Est	2014 Est	Diff. 2010
USA	4,500,855	4,402,634	4,360,345	4,296,134	4,225,590	-275,265
<i>% Change from 2010</i>		-2.2%	-3.1%	-4.5%	-6.1%	
Midwest	979,471	945,562	932,558	916,504	898,295	-81,176
<i>% Change from 2010</i>		-3.5%	-4.8%	-6.4%	-8.3%	
Indiana	97,131	89,995	89,213	88,303	87,077	-10,054
<i>% Change from 2010</i>		-7.3%	-8.2%	-9.1%	-10.4%	

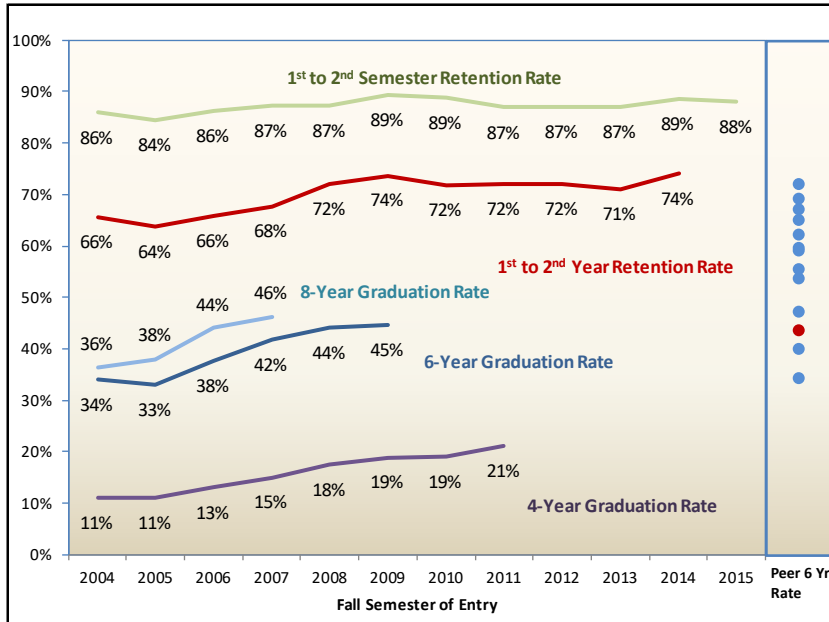
DEMOGRAPHIC CHALLENGES



ONLINE EDUCATION

- Over 25,000 students taking at least one online course – over 25% of all students and up 23% from last spring
- 117,000 credit hours of online enrollment – up 16% over last spring
- 7,500 taking fully online schedules; 4,400 in fully online programs
- Rankings
 - Kelley BSBA #1; Kelley Direct #2
 - Overall online ranking moved from 72 to 39 out of 300+ programs

MEASURES OF STUDENT COMPLETIONS

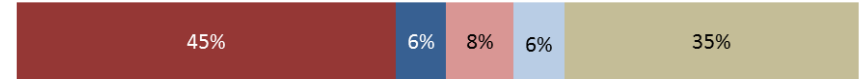


Student Achievement Measure

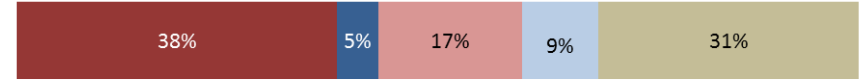
2009 First-time, Full-time Beginners; n=2,793



After 6 Years



After 5 Years



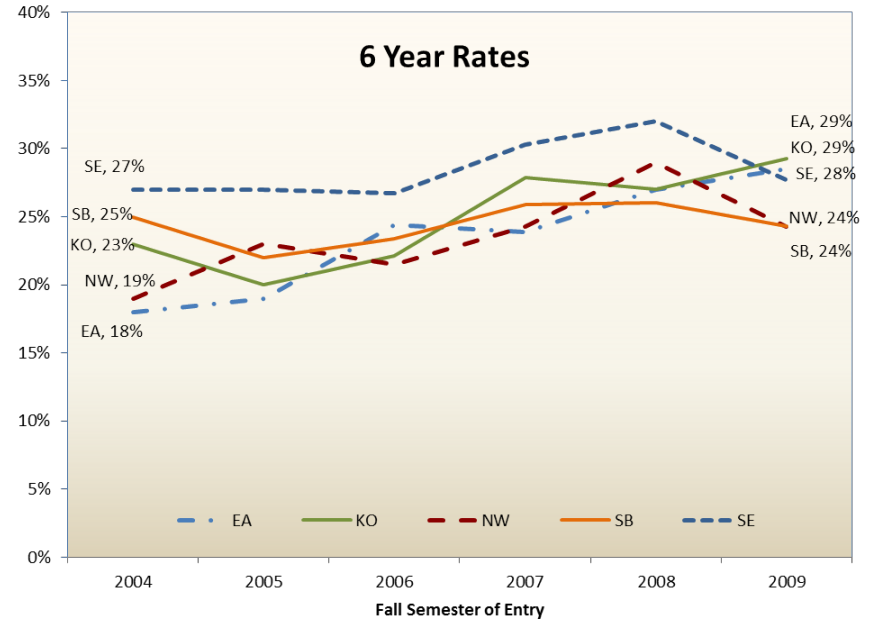
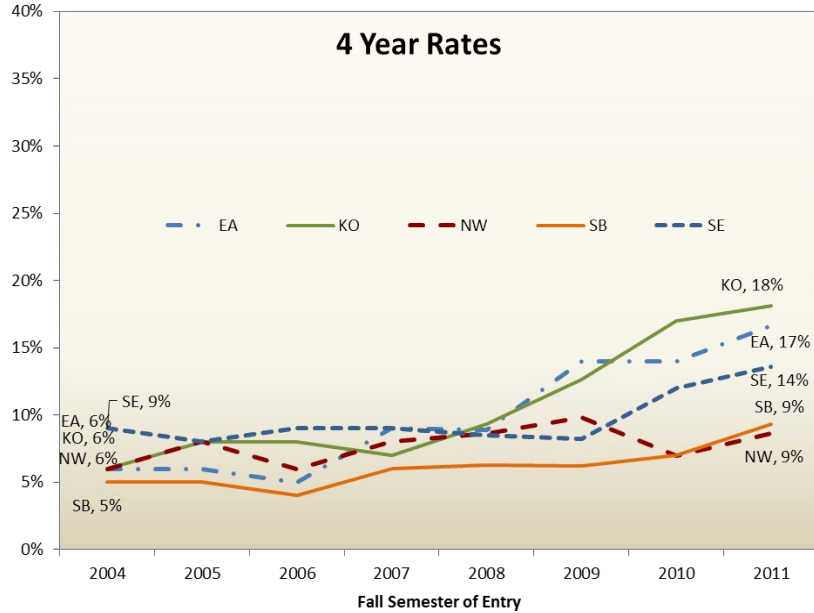
After 4 Years



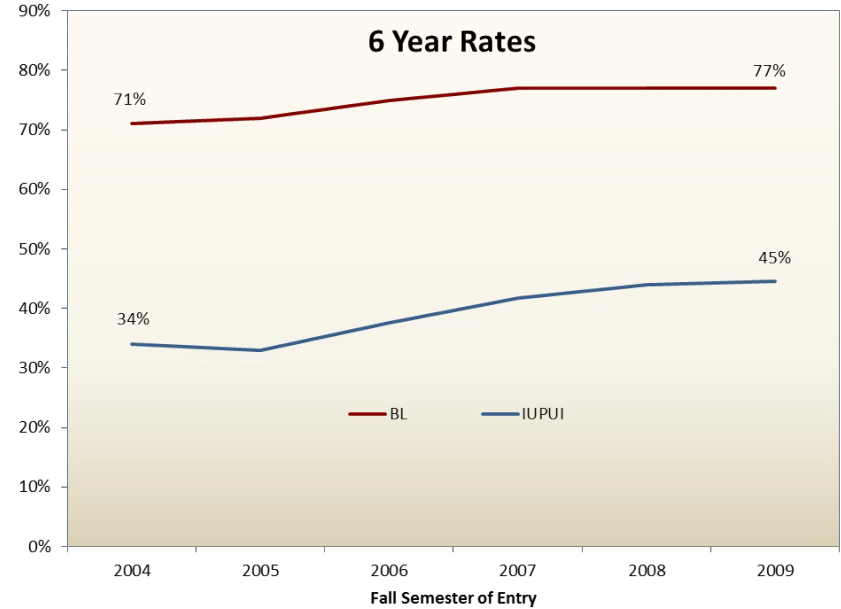
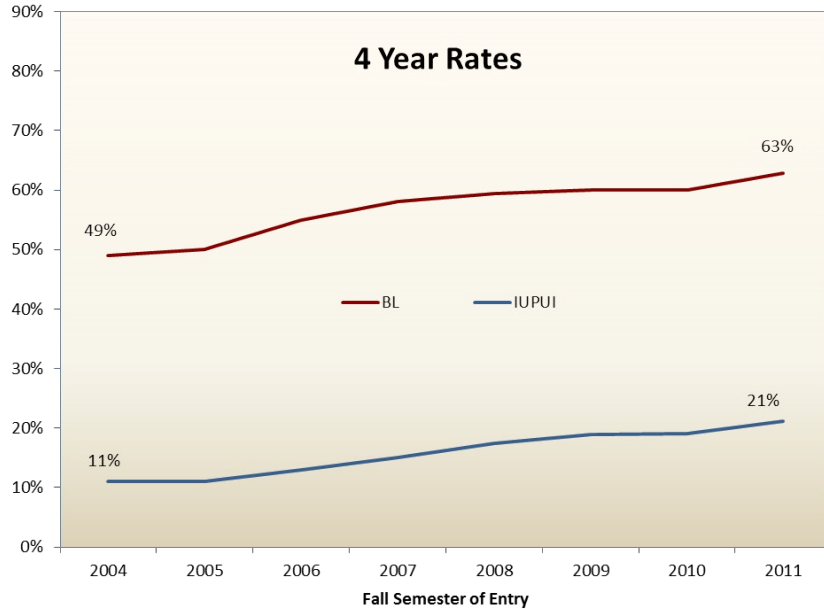
0% 10% 20% 30% 40% 50% 60% 70% 80% 90% 100%

■ IU Deg ■ Tran Deg ■ IU Enrol ■ Tran Enrol ■ Status Unknown

4 & 6 YEAR GRADUATION RATES - REGIONALS



4 & 6 YEAR GRADUATION RATES – BL & IUPUI



QUESTIONS



INDIANA UNIVERSITY

**OFFICE OF THE EXECUTIVE VICE PRESIDENT
FOR UNIVERSITY ACADEMIC AFFAIRS**