



1820-2020

Office of the Executive Vice President for University Academic Affairs

# Spring Enrollment and Completion Update

Board of Trustees  
Jan/Feb Meeting, 2019

John S. Applegate  
Executive Vice President for University Academic Affairs

Todd Schmitz  
Assistant Vice President, University Institutional Research & Reporting



1820-2020

## OVERVIEW

- Spring Enrollment Figures
  - Campus highlights & challenges
- Retention & Graduation Rates
- Degree Completion



1820-2020

## SPRING ENROLLMENT HIGHLIGHTS

- Overall stable enrollments with gains in graduate and minority counts.
- East and Kokomo – growth continuing but slowing
- Increased course loads (i.e. banded tuition) with undergraduates continues, encouraging completion
- Online growth



1820-2020

# SPRING 2019 ENROLLMENT

## Total Enrollment

## Degree Seeking Enrollment

	Heads			Hours			Heads			Hours		
	17-18	18-19	% chg.	17-18	18-19	% chg.	17-18	18-19	% chg.	17-18	18-19	% chg.
BL	41,651	41,295	-0.9%	545,642.0	540,930.0	-0.9%	41,159	40,823	-0.8%	542,893.5	538,298.0	-0.8%
IUPUI	27,691	27,563	-0.5%	345,864.0	345,979.0	0.0%	26,794	26,710	-0.3%	341,393.0	341,747.0	0.1%
EA	3,415	<b>3,527</b>	3.3%	34,405.0	<b>35,085.0</b>	2.0%	2,953	2,979	0.9%	32,579.0	32,884.0	0.9%
KO	2,802	<b>2,867</b>	2.3%	34,074.0	<b>34,653.0</b>	1.7%	2,656	2,647	-0.3%	33,561.0	<b>33,923.0</b>	1.1%
NW	3,683	3,556	-3.4%	41,884.0	39,955.0	-4.6%	3,495	3,364	-3.7%	40,983.0	39,141.0	-4.5%
SB	4,870	4,731	-2.9%	57,620.5	55,905.0	-3.0%	4,730	4,593	-2.9%	56,850.5	55,168.0	-3.0%
SE	4,714	4,723	0.2%	52,996.0	52,039.5	-1.8%	4,522	4,412	-2.4%	52,104.0	50,729.5	-2.6%
IU Total	88,826	88,262	-0.6%	1,112,485.5	1,104,546.5	-0.7%	86,309	85,528	-0.9%	1,100,364.0	1,091,890.5	-0.8%

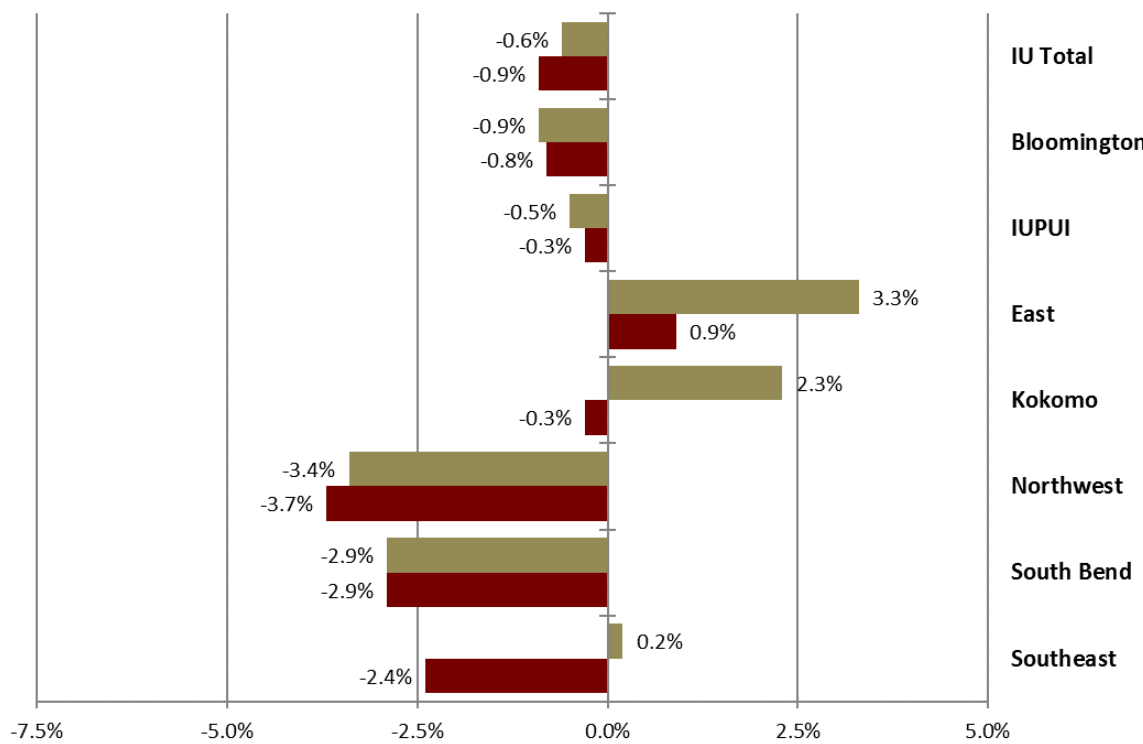
**Bold** indicates record



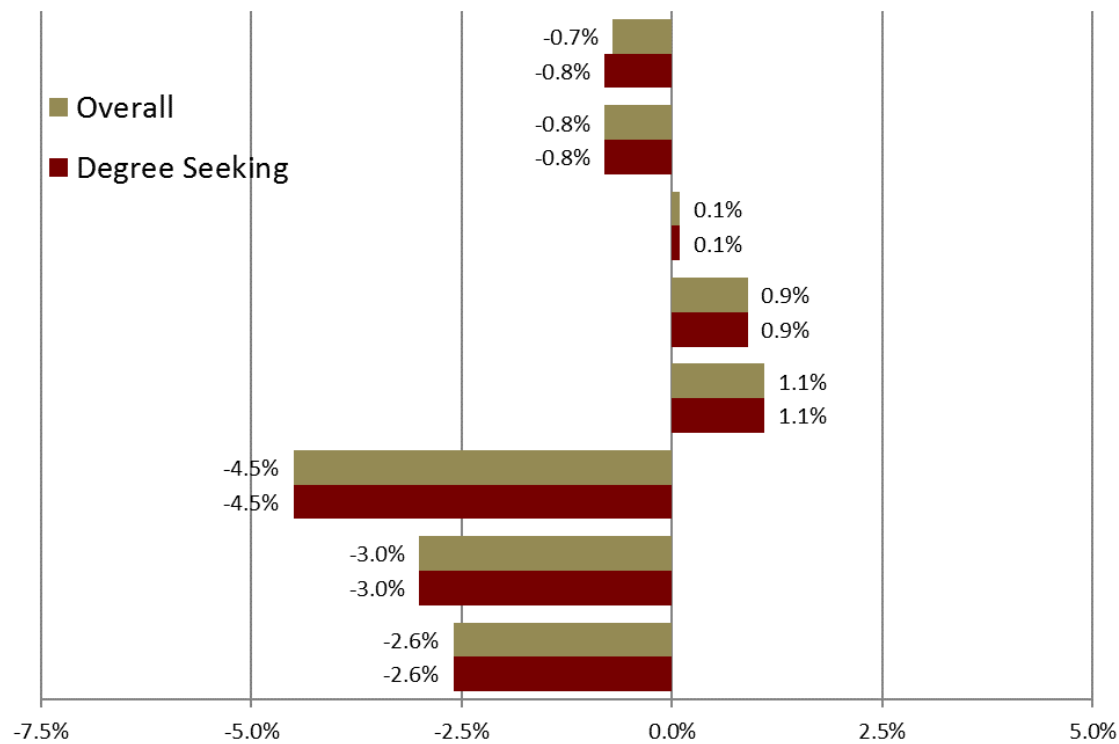
1820-2020

# SPRING TO SPRING ENROLLMENT CHANGE

### Headcounts



### Credit Hours

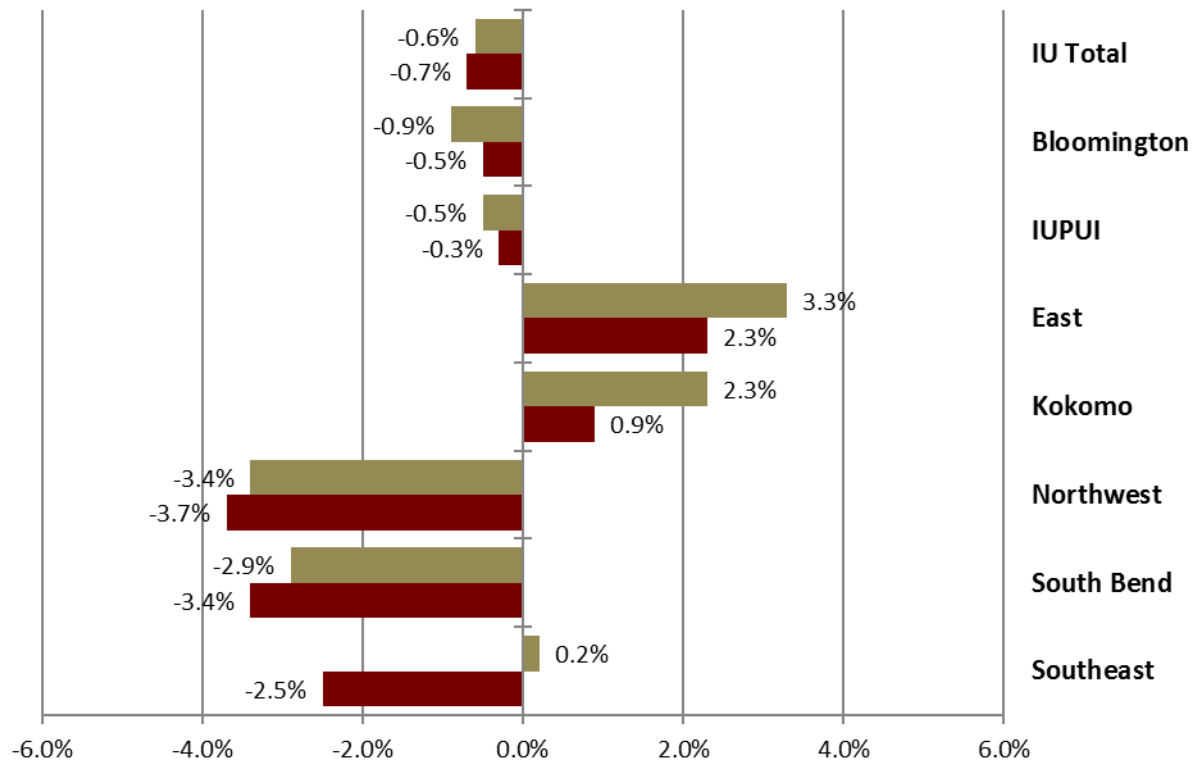




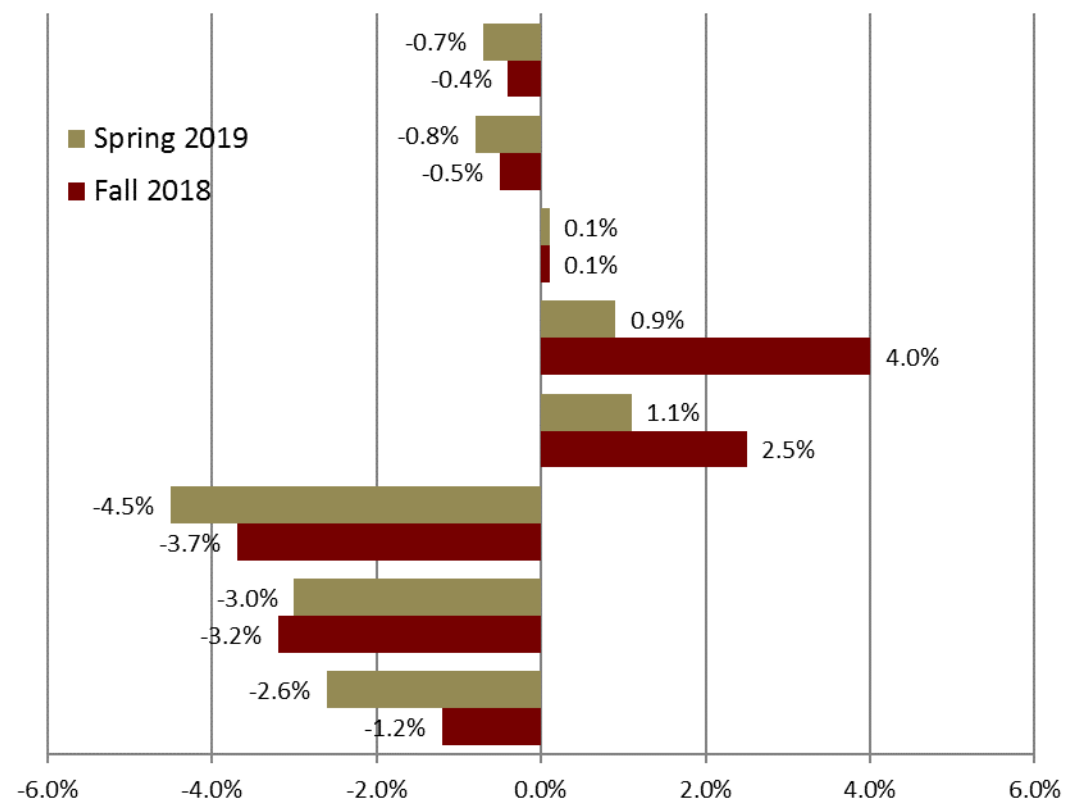
1820-2020

# FALL TO SPRING CHANGE

### Headcounts



### Credit Hours





1820-2020



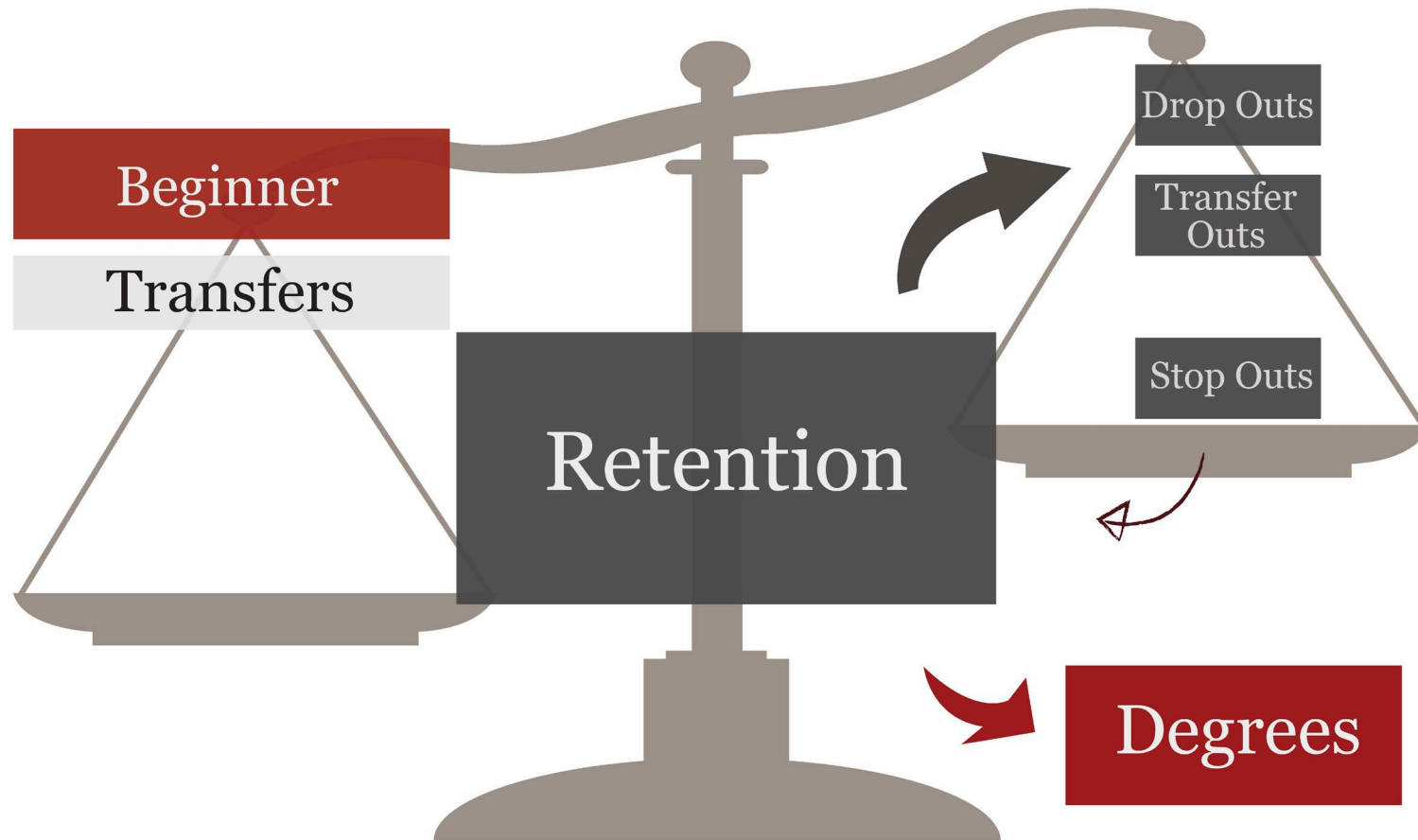
# STUDENT LIFECYCLE



Entering

Continuing

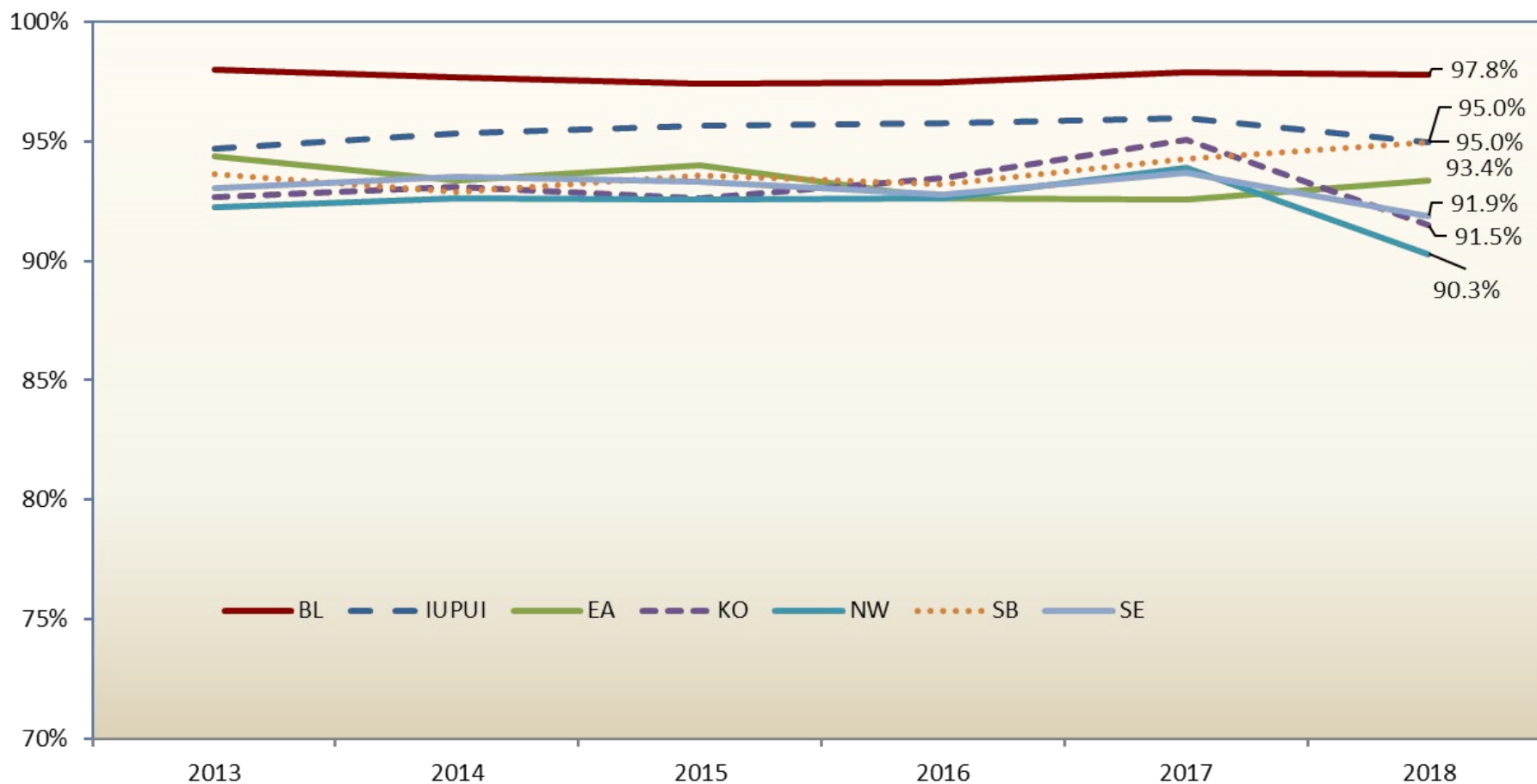
Leaving





1820-2020

# GROSS RETENTION – FALL TO SPRING



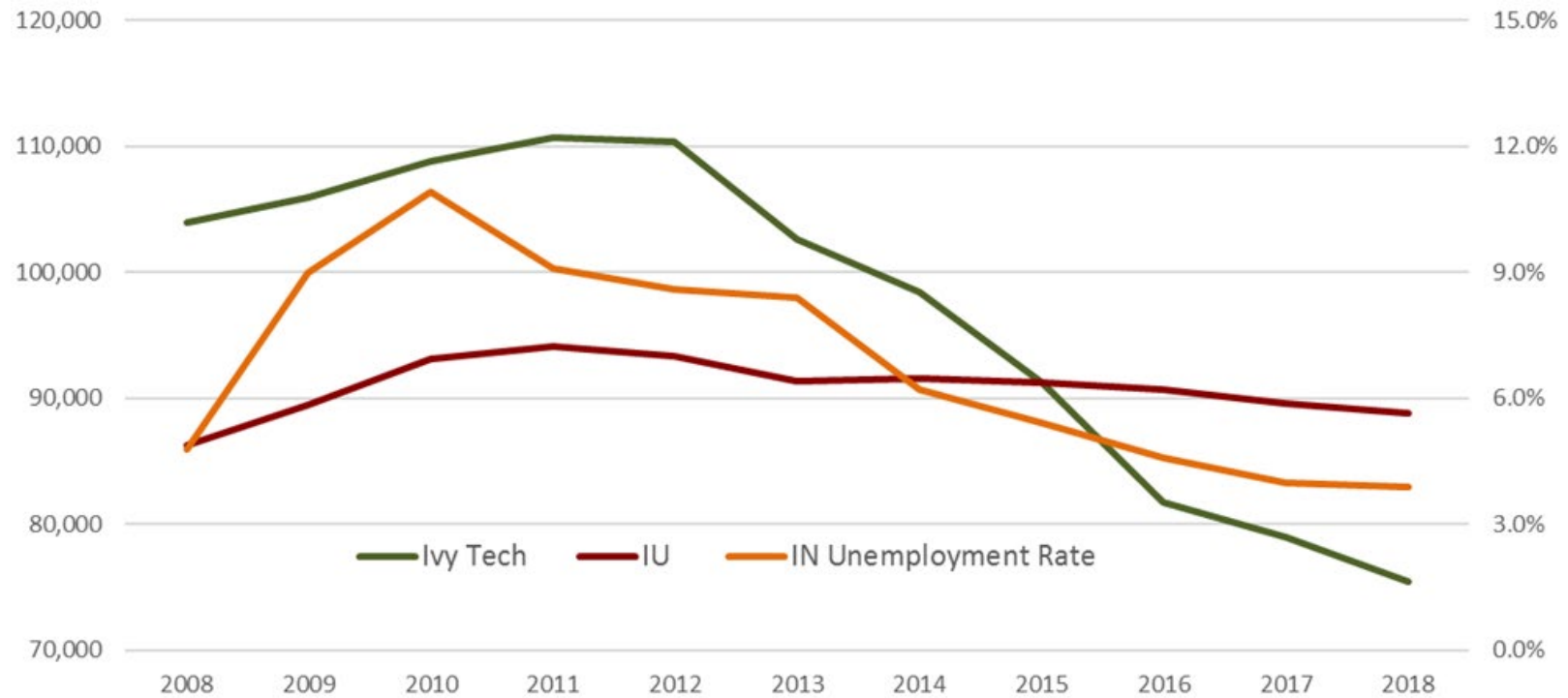




1820-2020

# THE ECONOMY AND ENROLLMENTS

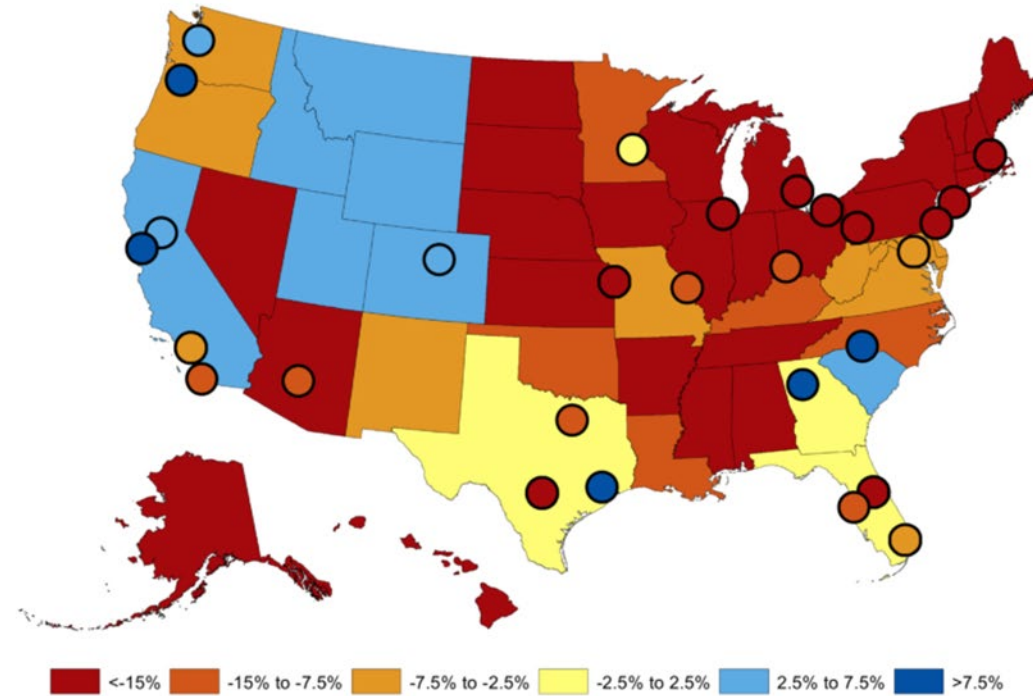
Spring Enrollments and Unemployment Rates





1820-2020

# DEMOGRAPHIC CHALLENGES



Source: Nathan D. Grawe



1820-2020



# INDIANA UNIVERSITY ONLINE

# SPRING 2019 CENSUS

Online includes synchronous and asynchronous delivery

## STUDENTS TAKING AT LEAST ONE ONLINE CLASS



**31,375**  
STUDENTS



**35.5%**  
OF ALL IU  
STUDENTS



**9%** INCREASE OVER  
SPRING '18



**82%**  
UNDERGRAD



**72%**  
FULL-TIME

## STUDENTS WITH 100% ONLINE SCHEDULES



**8,061**  
STUDENTS



**9%**  
OF ALL IU STUDENTS



**52%**  
UNDERGRAD



**32%**  
FULL-TIME



**64%**  
FROM  
INDIANA



**4%**  
OUTSIDE  
US

## 125 ONLINE PROGRAMS

RANKED BY US NEWS  
& WORLD REPORT:

**#1** MBA, GRADUATE  
BUSINESS

**#20** BACHELOR'S  
PROGRAMS

**#23** GRADUATE NURSING  
**#45** GRADUATE EDUCATION



**5,585**  
STUDENTS ENROLLED



**14% UP FROM**  
SPRING '18

## ONLINE CREDIT HOURS



**14%** OF  
ALL UNIVERSITY  
HOURS



**7% UP FROM**  
SPRING '18

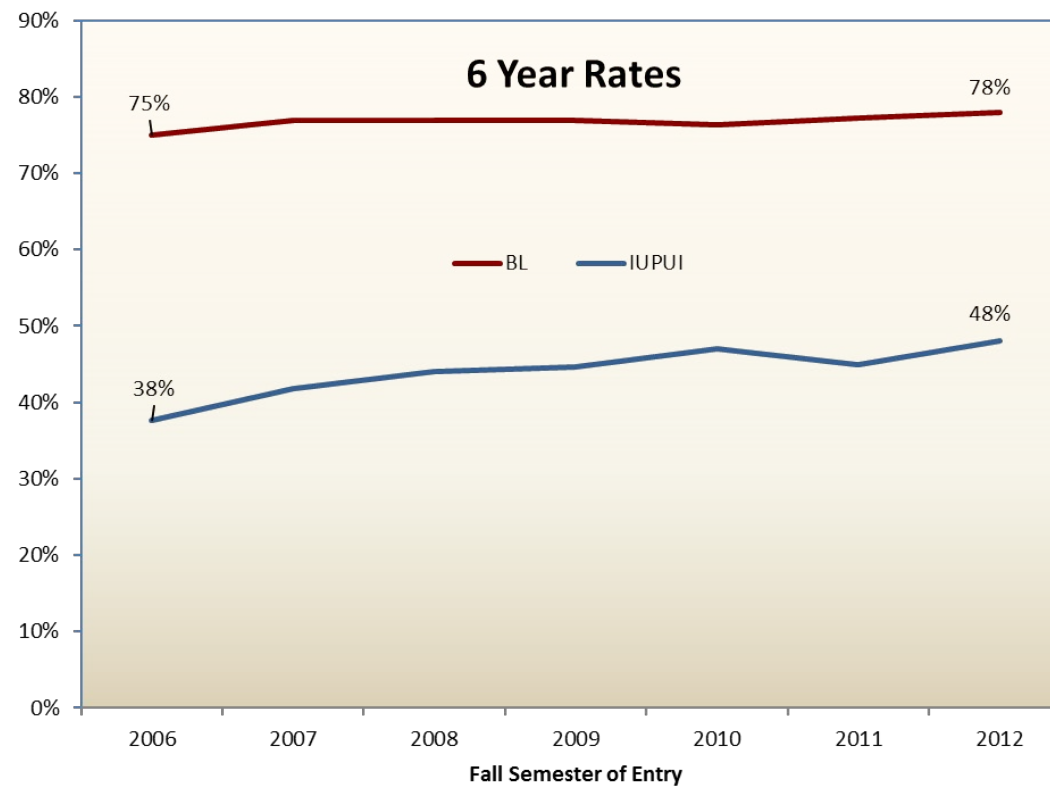
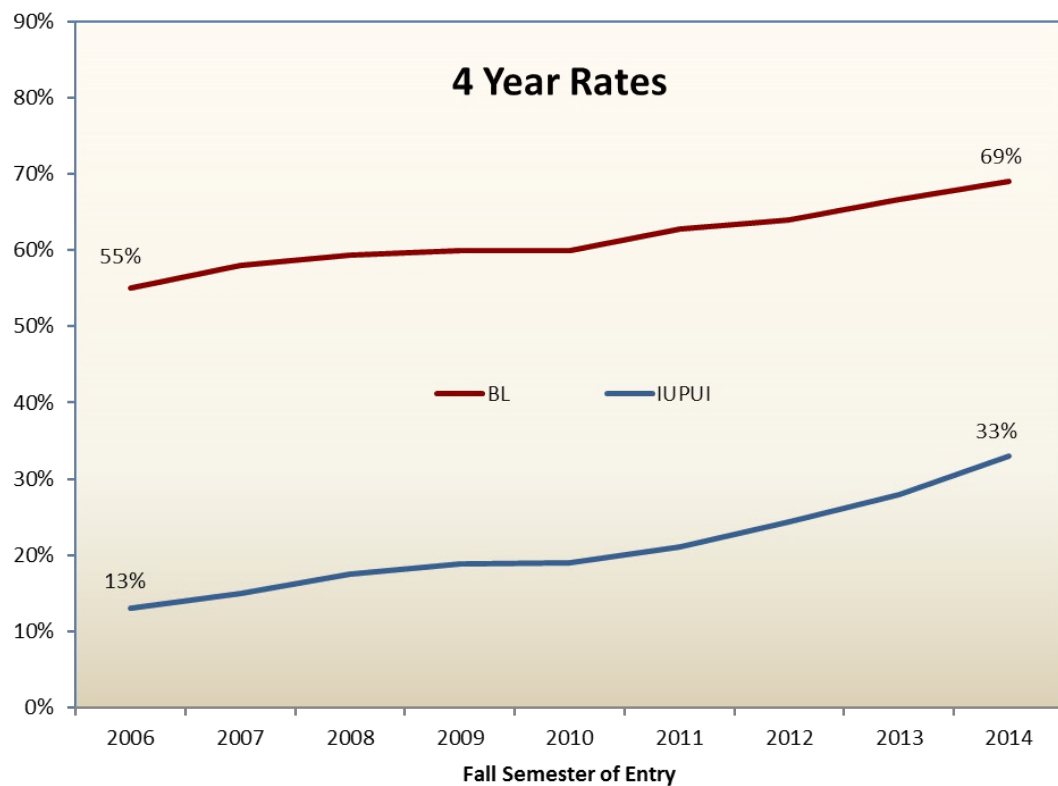


**30%**  
OF REGIONAL  
CAMPUS  
HOURS



1820-2020

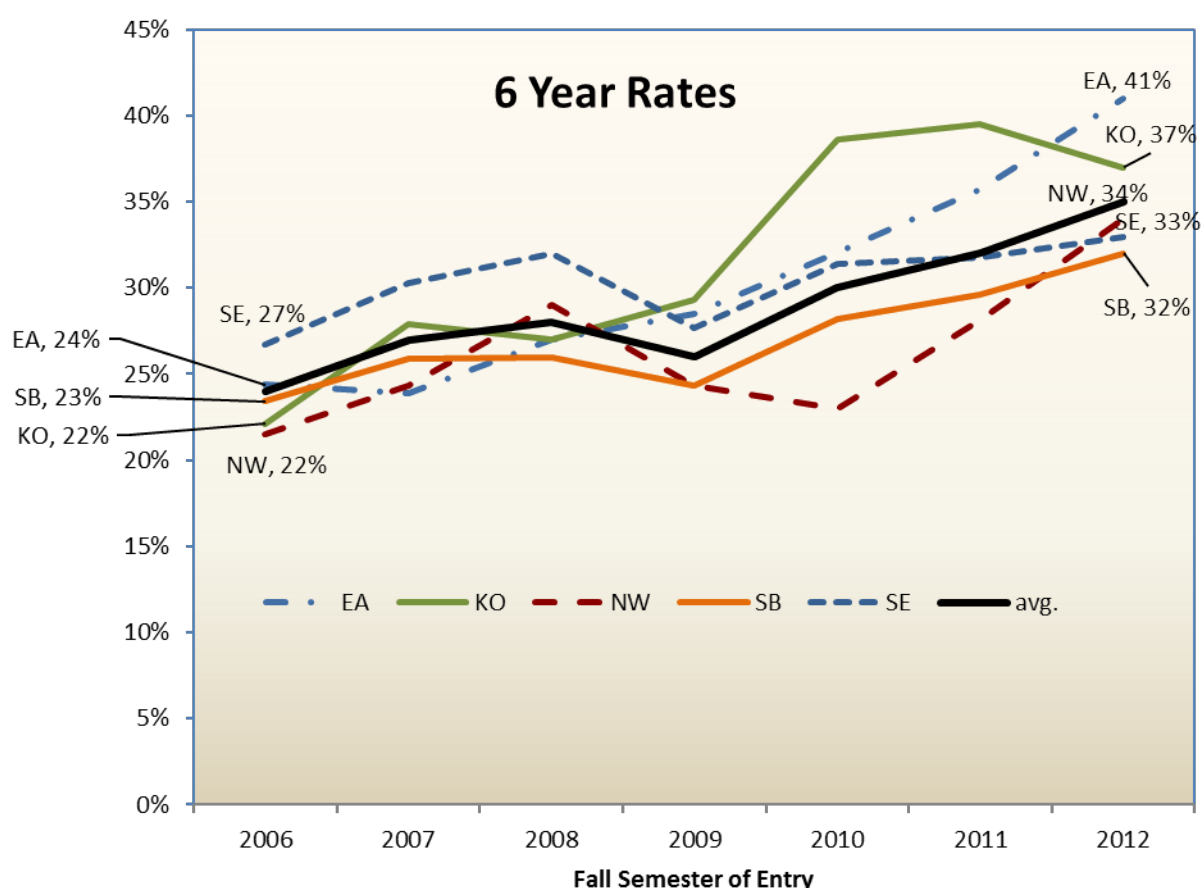
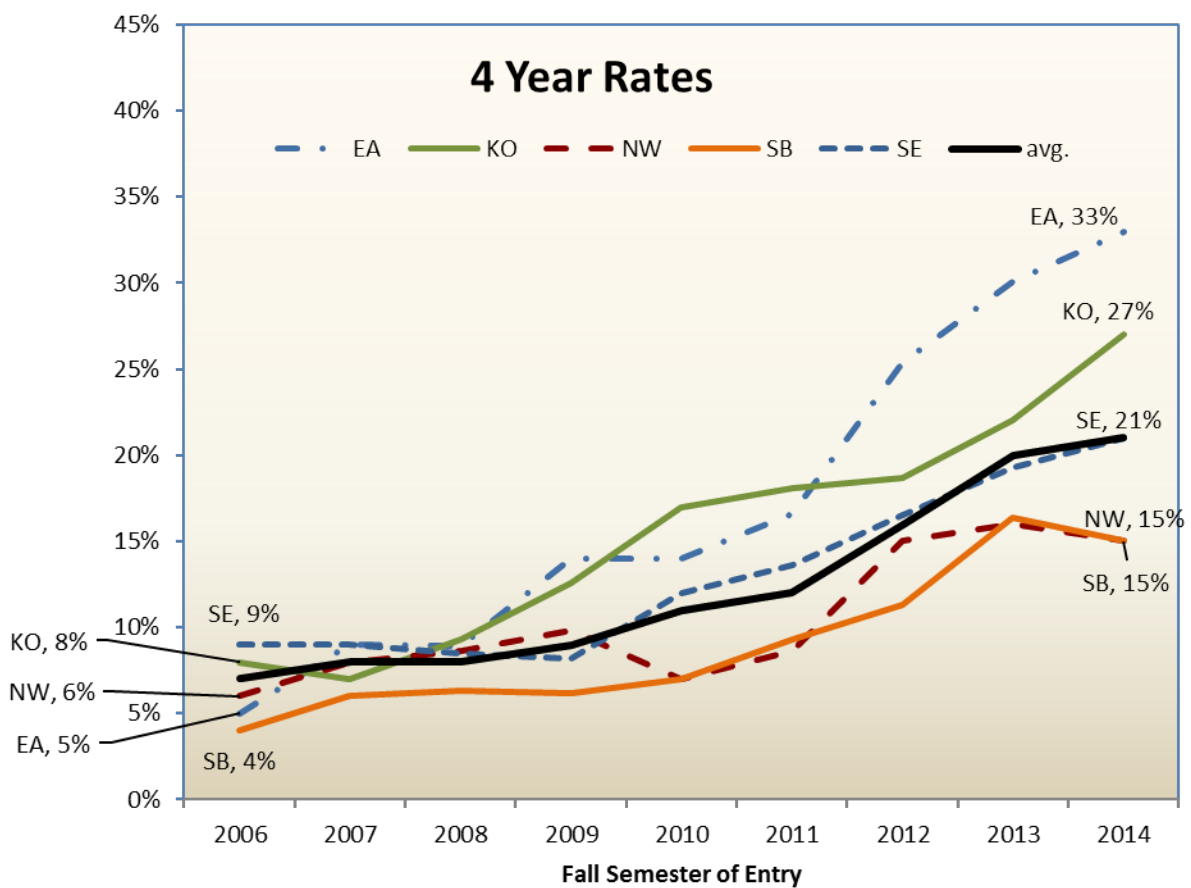
# GRADUATION RATES SUMMARY – IUB & IUPUI





1820-2020

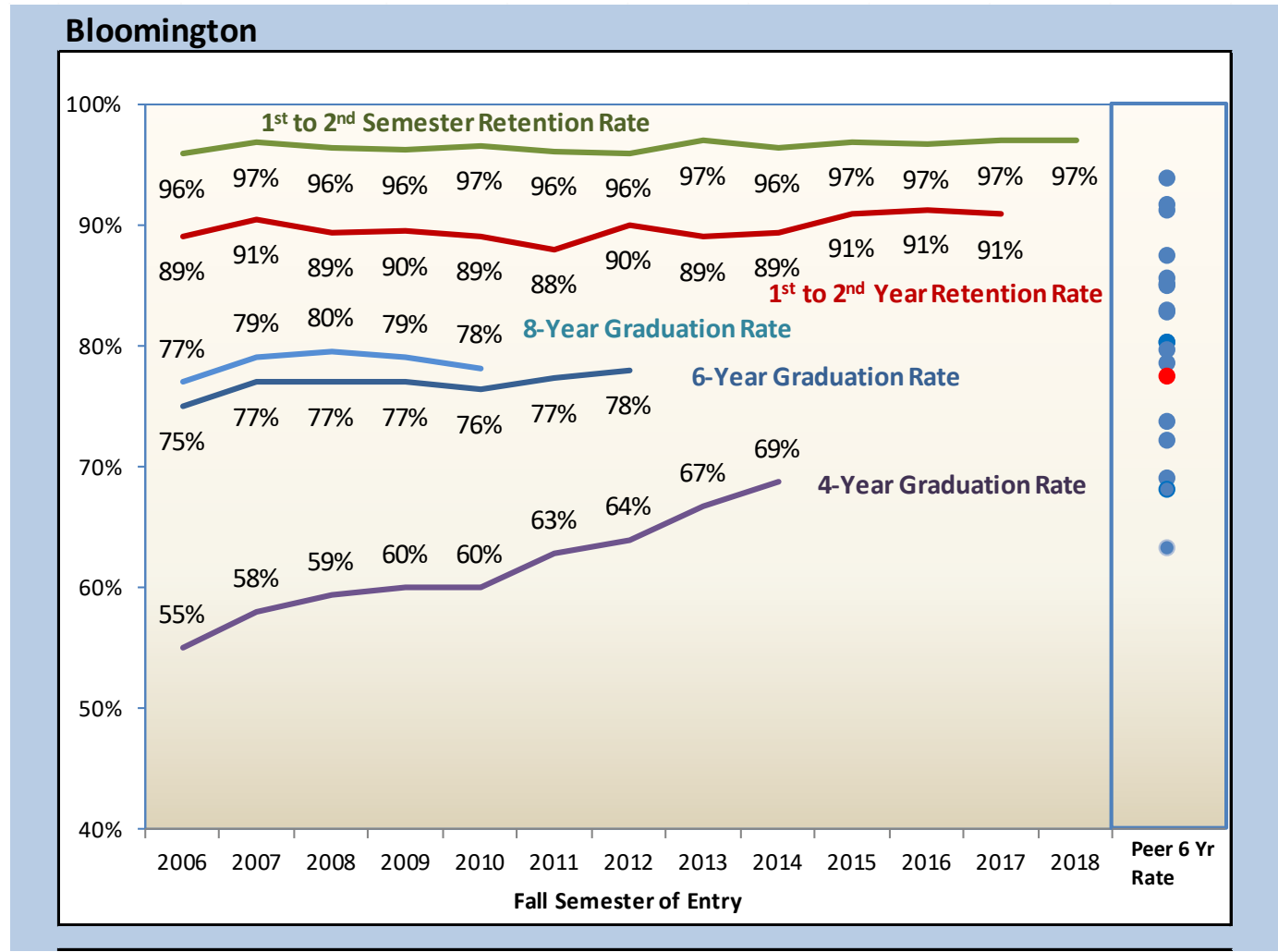
# GRADUATION RATES - REGIONAL CAMPUSES





1820-2020

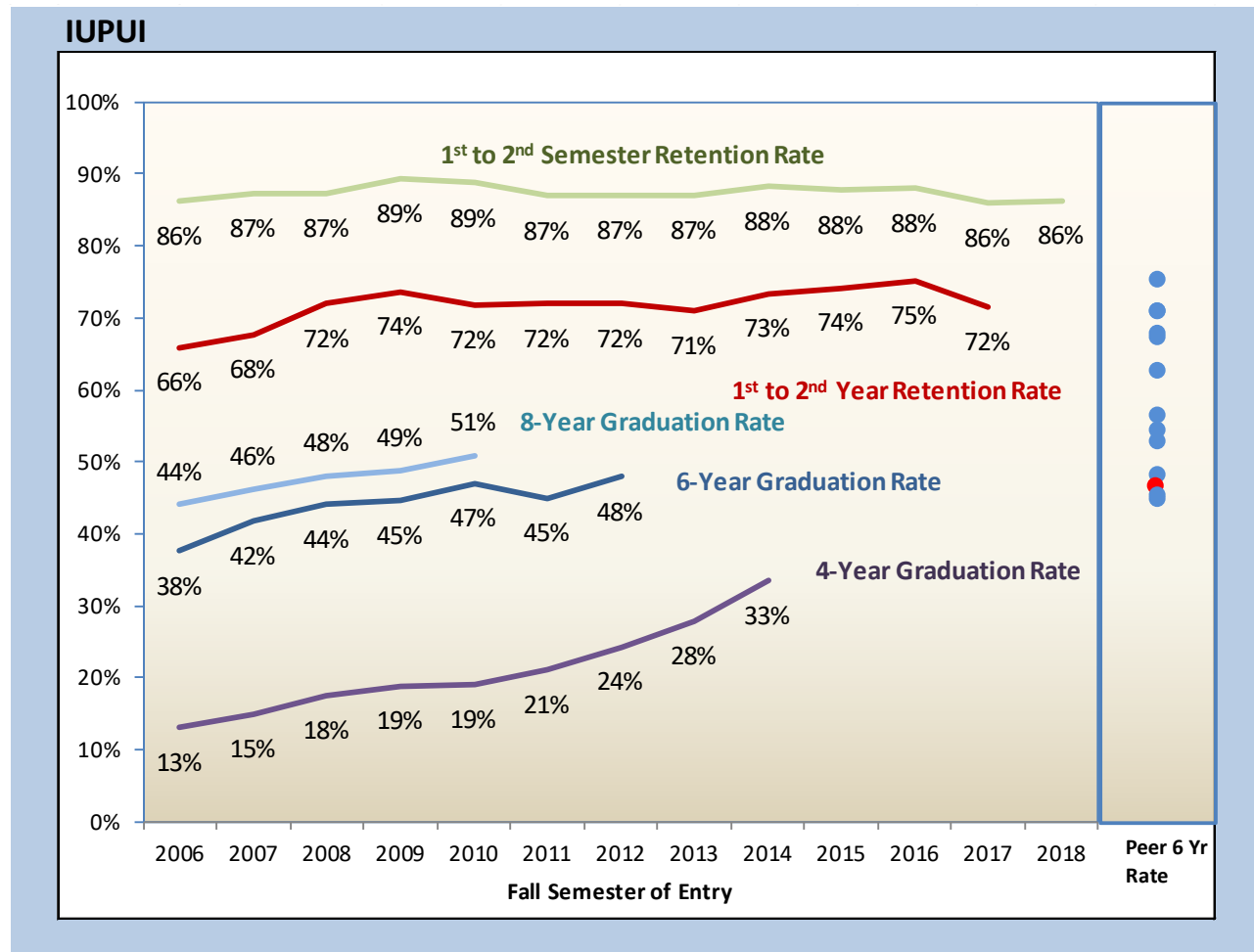
# RETENTION & GRADUATION RATES





1820-2020

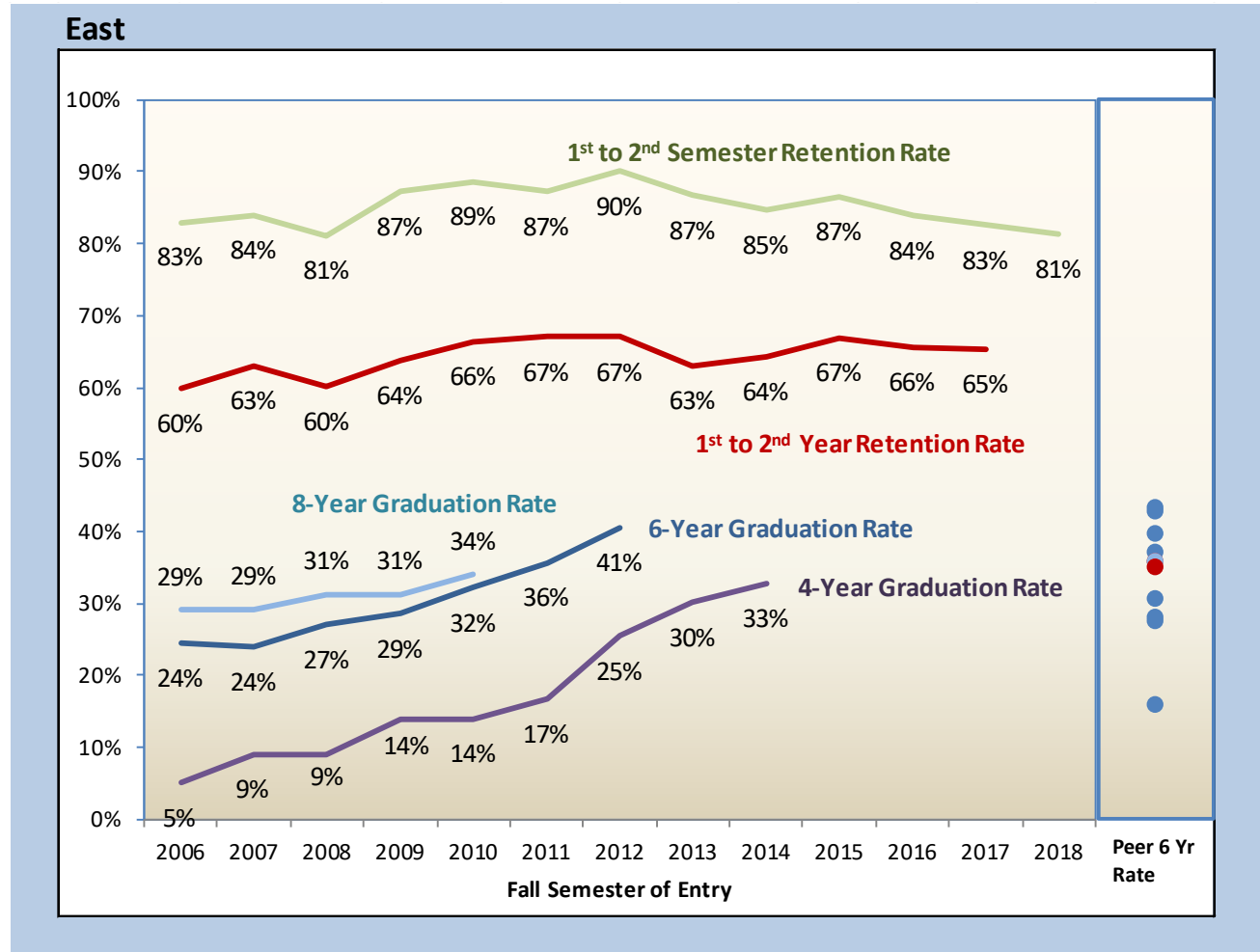
# RETENTION & GRADUATION RATES





1820-2020

# RETENTION & GRADUATION RATES

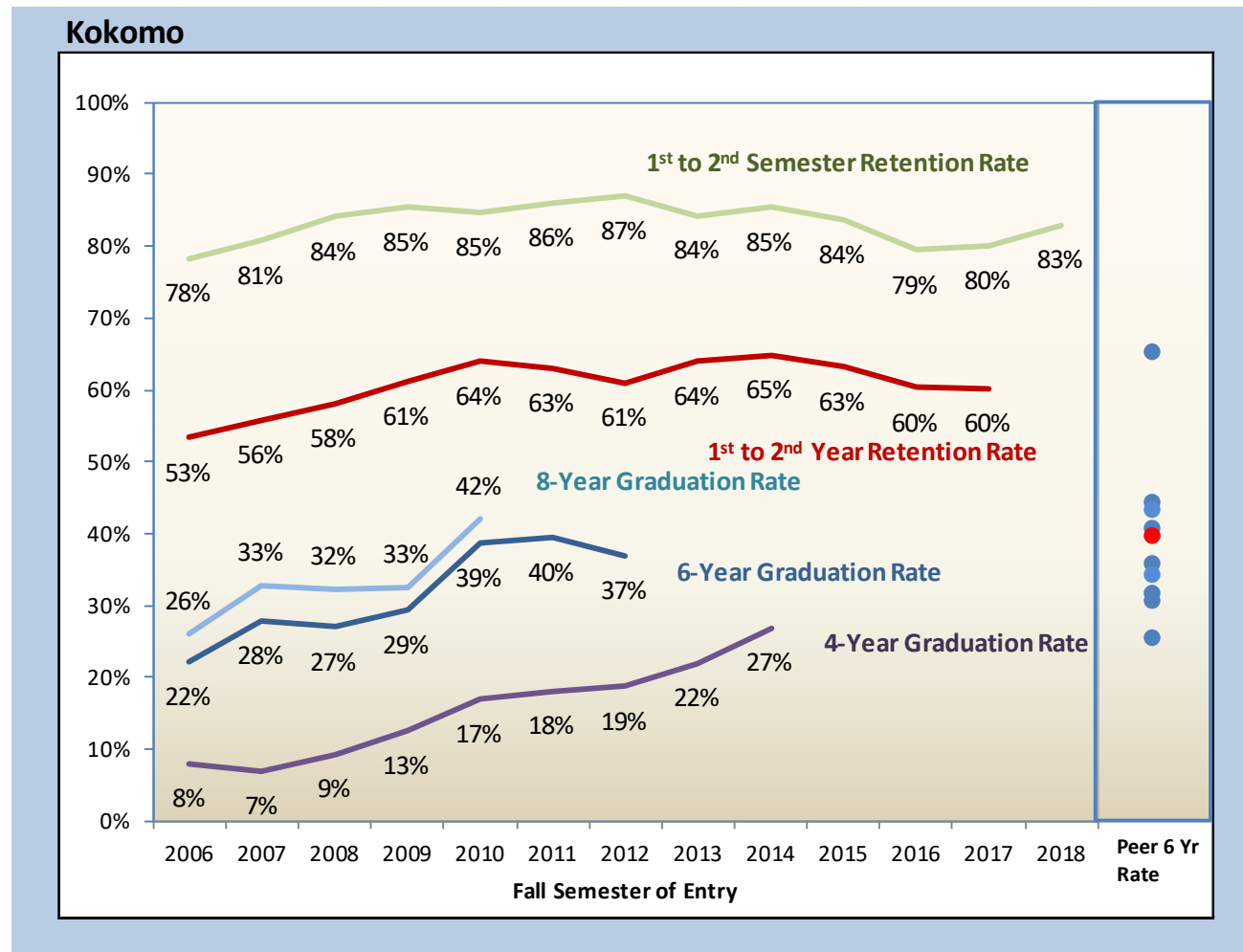






1820-2020

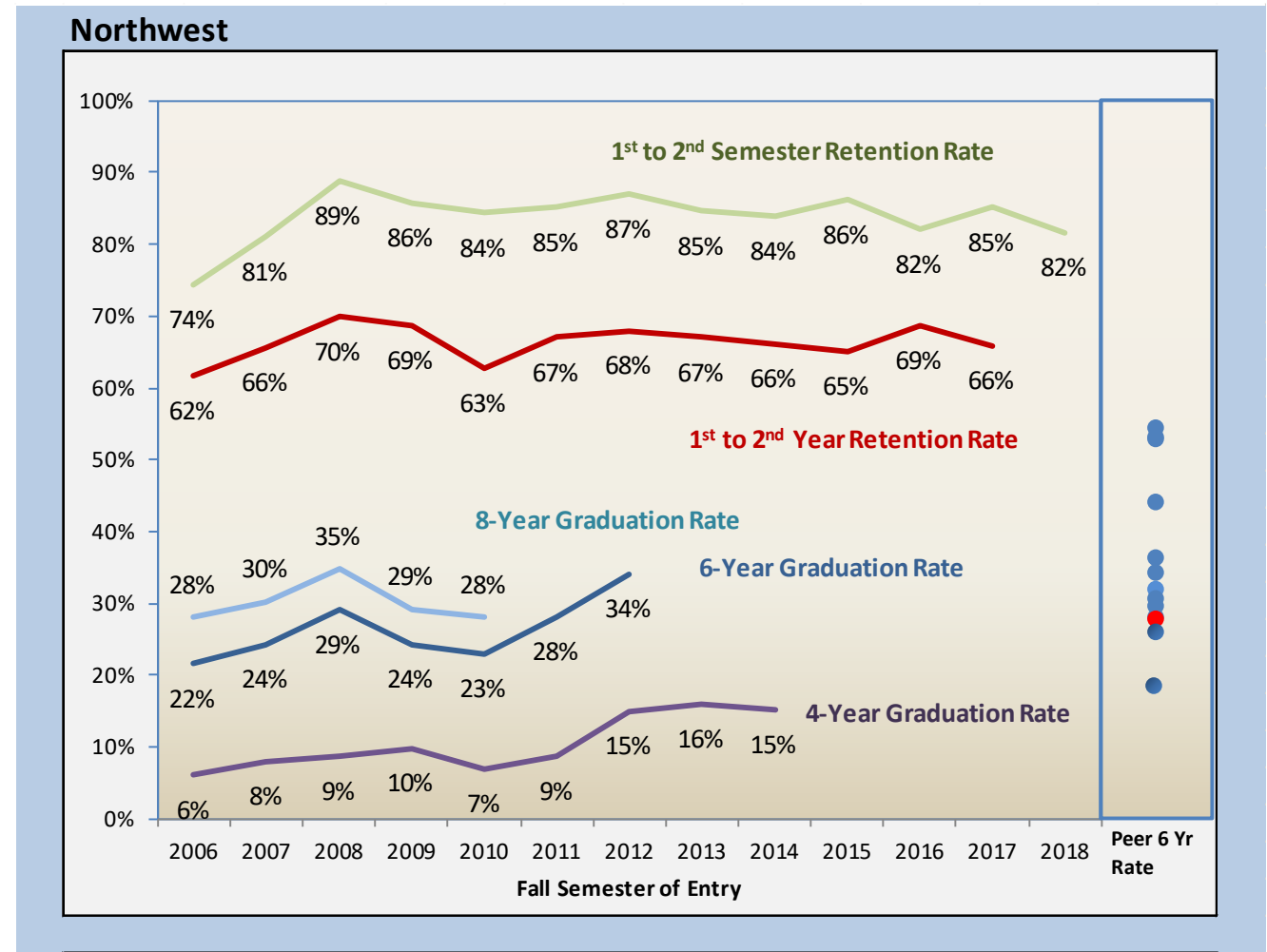
# RETENTION & GRADUATION RATES





1820-2020

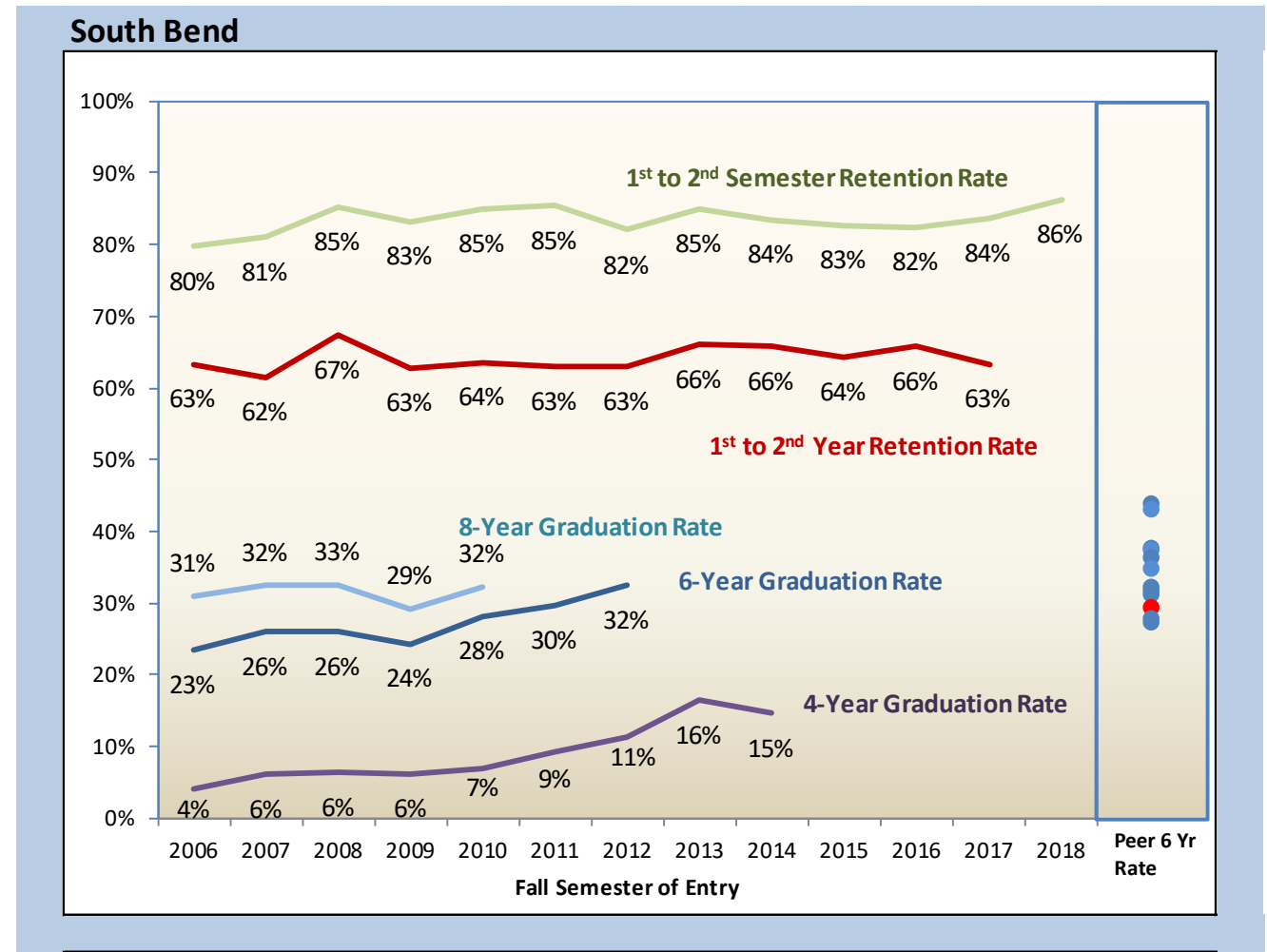
# RETENTION & GRADUATION RATES





1820-2020

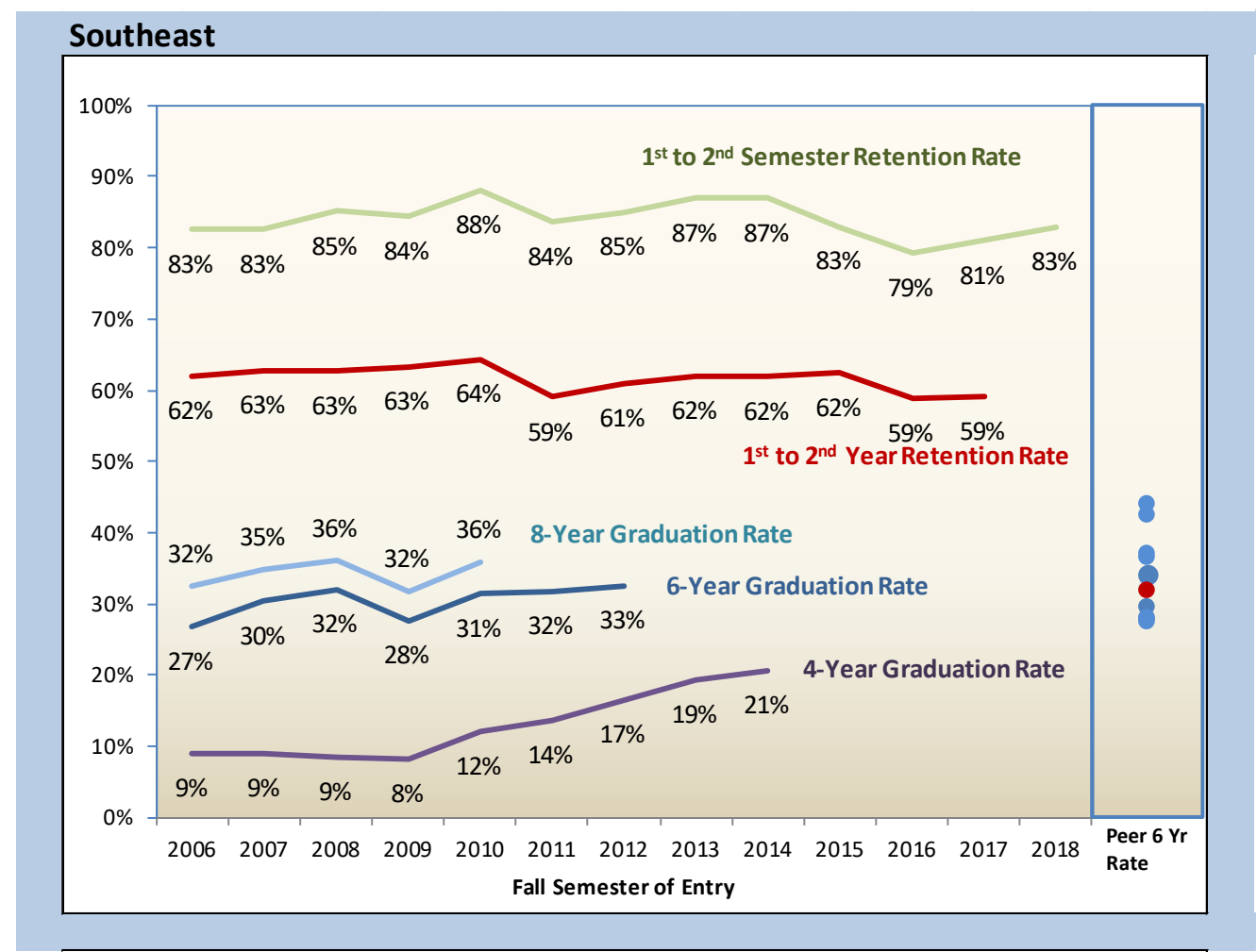
# RETENTION & GRADUATION RATES





1820-2020

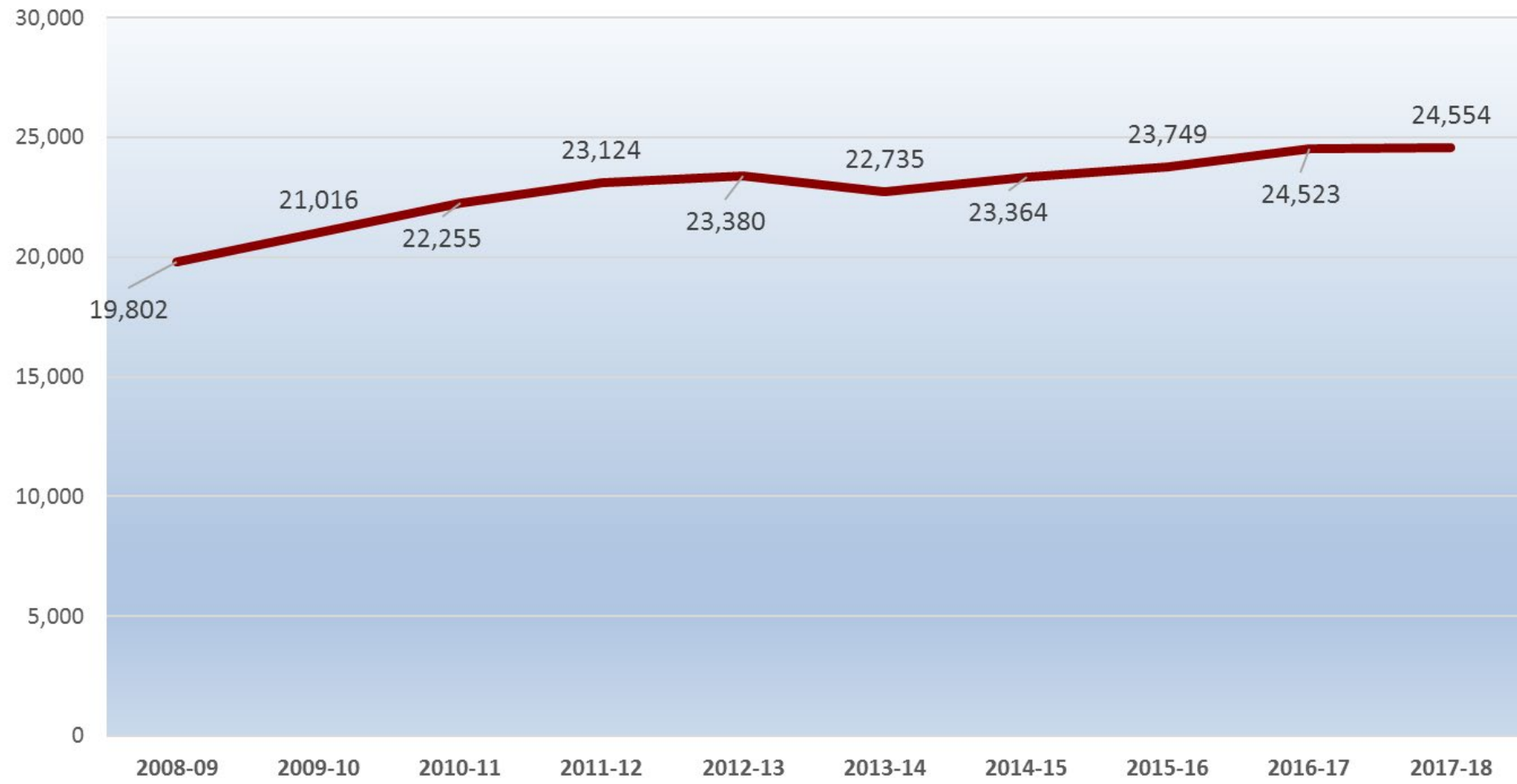
# RETENTION & GRADUATION RATES





1820-2020

# TOTAL, ANNUAL DEGREE COMPLETIONS





1820-2020

## KEY TAKEAWAYS

- Stabilizing enrollments in short term but demographic challenges follow
- Strong, long-term progress on completions with room for improvement on retention
- Online has become an integral and growing part of the educational landscape, though in different ways and to different degrees on campuses
- Attention to the retention and success of students is critical

# Questions



1820-2020

**INDIANA UNIVERSITY  
BICENTENNIAL**